



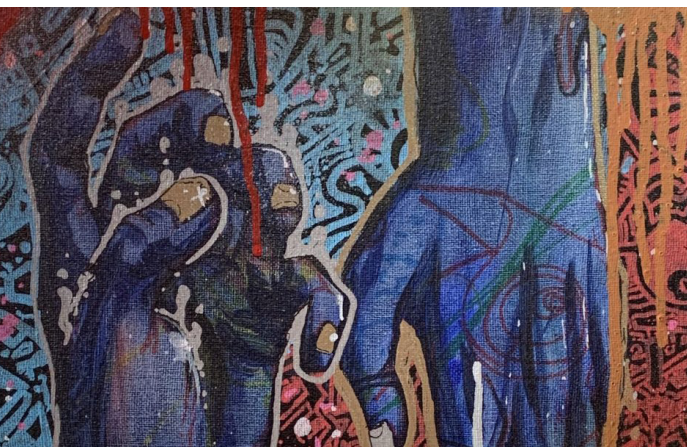
Office of Student Diversity and Inclusion
in partnership with Department of Art & Design present

Democracy & Inclusion: QUESTIONS OF REPRESENTATION, IDENTITY, POWER, AND VOICE.

ART EXHIBITION OPEN CALL FOR ARTWORK



Our Voice Photography Series
by Jenifer Arellano, graduate '21



Reach
by Riley Matlock



Migrant Worker Photography Series
by Kaitlyn G. Murphy

Entry Fee

FREE to enter. No entry fee required.

Eligibility & Entry Requirements

The exhibition and competition is **open to all** Valdosta State University students. (*You do not have to be an art major to participate.*)

All work must be original, completed within the last two years, and not previously exhibited with the Department of Diversity and Inclusion.

All visual media is welcome (2D/3D/4D).

- 2D work must be either framed or mounted to foamboard, and not exceed 48" in any dimension.
- 3D work must not exceed 24" in any dimension and be self-supporting.
- 4D work must not exceed 3 minutes long.
- Please refer to **How to Enter** section on the back for specific file formats.

Calendar

Submission of digital images of artwork emailed by - Fri, Sept. 2nd
Notification of accepted work - Tue, Sept. 6th

(giving students enough time to properly mat, frame, finish pieces prior to drop off date).

Friday, Sept. 16th

Day of Inclusion Art Display

2nd floor of the Student Union (near the Starbucks)

7 a.m. - 9 a.m. Drop Off Time*

10 a.m. - 2 p.m. Exhibition (*jurors will award during this time*).

3 p.m. - 4 p.m. Artwork Pick up Time

Monday, Sept. 19th

Artwork Exhibition (for 1st/2nd/3rd & Honorable Mention) pieces

Monday, Sept. 19th 5pm-7pm in Fine Arts Building

Martha G. Smart Student Art Gallery

**Reminder, if an artist is unable to drop off accepted work at designated drop-off time, they need to make accommodations prior to Friday with the Department of Diversity and Inclusion.*

Selection Team & Jurors

All submitted work will be reviewed and evaluated digitally for inclusion in the exhibition by the Selection Team. Students will have two weeks from the notification date to prepare the artwork for exhibition (framed, etc...) On the day of the exhibition, two jurors will judge the accepted artworks on display and will determine which ones shall receive special recognition and awards.

Pieces that receive recognition and awards will automatically be taken to the Fine Arts Building and installed for the Day of Inclusion Art Exhibition from Monday, September 19th - October 18th. All are welcome to attend the opening reception on Monday, September 19th from 5-7pm at the Martha G. Smart Student Art Gallery in the Fine Arts Building.

How to Enter

Artists may enter up to a maximum of three pieces. Please take a good quality photograph of each piece of artwork. Label your photos using the following format:

artist full name_title of piece.jpg

(ex. *JoyceBeyers_FindingMySon.jpg*)

Email each file as an attachment to **emdaviswalker@valdosta.edu** with the subject line Day of Inclusion Exhibition.

Works will be reviewed digitally by the selection team. Artists will be notified if their submissions were selected for inclusion in the exhibition. The selection team reserves the right to eliminate any work which does not meet the standards or quality for the exhibition or does not address the theme. Works not meeting these requirements WILL NOT be considered for the exhibition.

Each entry must be a **.jpg for 2D/3D** work;
4D entries must be in a **.mp4** file format.

Contact Information

Please direct questions regarding the exhibition and application process to Evelyn Davis-Walker, Art & Design Diversity Officer, Associate Professor of Graphic Design at **evelyndaviswalker@valdosta.edu**. Please put Day of Inclusion Exhibition in the email subject line.

Liability & Commitment

All reasonable precautions will be taken by the Department of Student Diversity and Inclusion to ensure the artwork is protected while at the exhibition site. Please note, however, no liability will be assumed by VSU. Artists are advised to take every precaution when delivering work to the exhibition site.

Submitting an entry form to this exhibition constitutes an agreement on the part of the artists with all conditions to this prospectus. No work accepted for the exhibition may be withdrawn before the closing date. We reserve the right to refuse any entry, if, upon arrival, the work is found unacceptable.



HER
by Jessica Appolon



We are Humanity
by Gloria Townsend, graduate '21



The Potter
by Ramiro Santillan, graduate '21