

**RARE PLANT SURVEYS, HABITAT MAPPING, AND DOCUMENTATION ON ALLIGATOR CREEK WILDLIFE
MANAGEMENT AREA, WHEELER COUNTY, GEORGIA**

FINAL REPORT

Submitted to
Georgia Department of Natural Resources, Natural Heritage Program
in fulfillment of contract

10 September 2019

Principle Investigators

Richard Carter
Herbarium, Biology Department
Valdosta State University
Valdosta, GA 31698-0015

Frankie Snow
School of Science
South Georgia State College
Douglas, GA 31533

TABLE OF CONTENTS

INTRODUCTION.....	1
OBJECTIVES.....	1
METHODS.....	1
RESULTS.....	2
MANAGEMENT RECOMMENDATIONS.....	3
REFERENCES CITED.....	3
APPENDIX A – Fieldbook Voucher Log with Site Descriptions.....	4
APPENDIX B – GA DNR-WRD Special Plant Survey Form Data for Rare Plant Taxa.....	42
APPENDIX C – Vouchered Checklist of Flora.....	51
LIST OF FIGURES.....	66

INTRODUCTION

The Georgia Department of Natural Resources Wildlife Resources Division (GA DNR-WRD) is preparing a Strategic Plan for Alligator Creek Wildlife Management Area (ACWMA) in Wheeler County, Georgia. Knowledge about rare species and unique habitats for this area is limited. Although several rare plants are known from the area, detailed information about their current population levels and vigor is lacking. Based upon an initial habitat assessment, it is also believed that the potential for occurrences of other rare plants is high at ACWMA. Whereas the presence of rare species and habitats will influence the management objectives of the Strategic Plan for ACWMA, there is a need to conduct rigorous rare plant surveys there. This will involve visiting historic rare plant sites and conducting surveys in suitable habitats. Thus, the primary objectives of this project are to search for rare plants on ACWMA at historical sites and in suitable habitats, to document any such populations discovered, and to provide data on these populations and on rare habitats to GA DNR-WRD staff. Funding from the federal State Wildlife Grants program, available through the State Lands Survey grant, will be used to conduct this survey (Anonymous 2019), which is continuation of field efforts during 2018 (cf. Carter and Snow 2018).

OBJECTIVES

As detailed in Anonymous (2019), following are the major objectives of this project.

1. Conduct vascular plant surveys for plants of conservation concern and their habitats on Alligator Creek WMA during the spring and summer of 2019.
2. Report rare plant locations and submit data to the Biotics Database for use in developing the Strategic Plan. Maintain communication with WCS project administrator on important finds throughout the agreement period. Provide feedback on current land use and future conditions mapping efforts that are underway by WCS staff.
3. Submit a final report containing site descriptions, maps, and important botanical discoveries made during the project.

METHODS

Rare plant surveys were conducted across ACWMA in late spring and summer of 2019 (Figure 1). Locations of confirmed rare species and their habitats were reported to the NCS project administrator throughout the project period to keep staff working on the Strategic Plan up to date on important finds, this included all potential tracked plant species and others thought to be of special interest by the surveyors. Additionally, comments were made to the NCS project administrator using Avenza Maps (avenza.com) about mapped community types (Figure 2). The list of priority target species includes, but is not limited to, *Amorpha georgiana*, *Litsea aestivalis*, *Lindera melissifolia*, *Marshallia ramosa*, *Penstemon dissectus*, *Rhexia salicifolia*, *Rhynchospora crinipes*, *Rhynchospora culixa*, *Rhynchospora solitaria*, *Sarracenia flava*, *Sarracenia minor*, and *Sarracenia psittacina* (Krakow 2018). Global Positioning System (GPS) locations and data on each rare plant species found are provided in the final report, based upon the GA DNR-WRD Special Plant Survey Form, i.e., biology (phenology, number of individuals, population area, age structure, vigor), habitat (environmental and associated natural community), identification, threats, as well as conservation, management, or research needs.

Global Positioning System (GPS) data (latitude, longitude) were taken to locate each population or rare plant. GPS data (Datum WGS 84, equivalent to NAD 83) were taken using a Garmin GPSMAP 64s unit. These data were subsequently used to map each population with Google Earth Pro (version 7.3.2.5491, 64-bit). All GPS data provided herein are given as decimal degrees latitude/longitude. Additional data recorded in the field included date of survey, community type, lists of associated species, attributes of topography, evidence of disturbance, observations on management practices, and observations of other rare or unusual species.

PREPARATION OF VOUCHERS. In order to document populations of rare plants and associated species, voucher specimens were prepared from selected populations. All voucher specimens will be deposited in the Valdosta State University Herbarium (VSC).

Table 1. List of rare plants observed and documented at Alligator Creek Wildlife Management Area during our 2019 survey; abbreviations from Krakow (2018).

ACCEPTED TAXON NAME SYNONYM	FEDERAL STATUS	GEORGIA STATUS	GLOBAL/STATE RANK
<i>Marshallia ramosa</i> Beadle & F.E. Boynton	NA	R	G2G3/S2
<i>Muscadinia rotundifolia</i> (Michaux) Small <i>var. munsoniana</i> (Simpson ex Planch.) Weakley & Gandhi <i>Vitis rotundifolia</i> Michaux <i>var. munsoniana</i> (J.H. Simpson ex Munson) M.O. Moore	NA	NA	G5T4?/S2?
<i>Penstemon dissectum</i> Elliott	NA	R	G2/S2
<i>Rhynchospora harperi</i> Small	NA	NA	G4?/S1S2

RESULTS

Working together, Snow and Carter logged eight (8) days of field work during the 2019 survey period: 5/11, 5/16, 6/7, 6/21, 7/19, 7/25, 8/18, and 9/1. Field data and other results are included in appendices A, B and C. Field data for voucher specimens collected by Carter and Snow are provided in Appendix A with the names of rare plants tracked by DNR and other taxa the PI's found to be of special interest highlighted in yellow. Data on survey sites, including names of observers, dates of observations, GPS coordinates, descriptions of habitats, and plant communities, and lists of associated species observed are also provided in Appendix A. Rare plants observed during our 2019 survey and reported here are listed in Table 1. Based upon the GA DNR-WRD Special Plant Survey Form, element occurrence data on these rare plants are included in Appendix B. Appendix C is a list of species from ACWMA that we have documented through the collection of voucher specimens during our 2018 and 2019 surveys as well as preliminary surveys during 2016 and 2017. Nomenclature generally follows Weakley (2015). Table 2 and corresponding figures 3 through 6 summarize our observations and comments on a preliminary map of plant communities (Figure 2) that were reported to the project coordinator 7/26/2019 as a kmz file, an updated version of which is attached to this report.

MANAGEMENT RECOMMENDATIONS

Management recommendations remain essentially unchanged from our earlier report (Carter and Snow 2018), although we herein request permission to make additional survey trips to ACWMA in September and October 2019 and spring and early summer of 2010. This will enable us to compile a more complete vouchered list of the flora of ACWMA which we would like to submit for publication in a botanical journal.

Table 2. Notes on preliminary map of plant communities at Alligator Creek Wildlife Management Area; sites correspond with those mapped in figures 3–6 and in the kmz file attached to this report.

Site 1: Mature longleaf pine [LLP] observed
Site 2: Mature LLP observed
Site 3: Mature LLP observed
Site 4: Natural LLP regeneration
Site 5: Scrub Oak/Wiregrass, LLP apparently absent
Site 6: Community map? – Map showed communities on both sides of this road to be the same; however, they have been managed very differently and should probably be treated differently in future. Particular emphasis should be placed on maintaining the integrity of the remnant community on the west side of this road, as it is still ±intact.
Site 7: Mature LLP observed
Site 8: Mature LLP observed
Site 9: Mature LLP observed
Site 10: Mature LLP observed
Site 11: Near mature LLP observed
Site 12: The unmulched turkey oak community in this portion of the block north of Livingston Road is still ±intact despite the LLP having been removed. It should be preserved and managed differently from the highly degraded, mulched sand ridge remnant along Livingston Road.
Site 13: Community map? – Map showed this as Wet Longleaf Pine-Pond Pine Flatwoods; however, we did not observe longleaf pine in this community; thus, we recommend Wet Pond Pine – Slash Pine Flatwoods as the community type.

REFERENCES CITED

- Anonymous. 2018. Letter of Agreement: Rare Plant Surveys and Documentation on Alligator Creek WMA. Georgia Department of Natural Resources, Wildlife Resources Division, Non-Game Conservation Section, Social Circle, Georgia.
- Carter, R. and F. Snow. 2018. Rare plant surveys and documentation of Alligator Creek Wildlife Management Area, Wheeler County, Georgia. Unpublished report to Georgia Department of Natural Resources, Social Circle. 124 pp.
- Krakow, G. A. (ed.). 2018. Georgia rare natural elements data portal. (<http://gakrakow.github.io/>, 16 November 2018). Georgia Department of Natural Resources, Wildlife Resources Division, Social Circle, Georgia.
- Weakley, A.S. 2015. Flora of the southern and mid-Atlantic states. Working draft of 21 May 2015. (http://www.herbarium.unc.edu/FloraArchives/WeakleyFlora_2015-05-29.pdf, 8 July 2017). University of North Carolina, North Carolina Botanical Garden, Chapel Hill, North Carolina.

Appendix A. Fieldbook Voucher Log: 5/11/2019–9/1/2019
Alligator Creek Wildlife Management Area, Wheeler County, Georgia

5/11/2019

Richard Carter with Frankie Snow

U.S.A. Georgia: Wheeler County

31.95478N/82.65755W

2.17 airmi NE (36.16°) of Lumber City jct. Hwy GA 19 and Hwy US 23/341, Alligator Creek Wildlife Management Area, along trail E of Little Pond

--cut-over flatwoods, gray sandy loam

with *Nyssa biflora*, *Quercus hemisphaerica*, *Q. elliotii*, *Acer rubrum*, *Persea palustris*, *Ilex glabra*, *Vaccinium arboreum*, *V. stamineum*, *V. myrsinites*, *Morella cerifera*, *Serenoa repens*, *Pteridium aquilinum*

23673 [1] Euphorbiaceae *Euphorbia discoidalis* Chapman

det. R. Carter

occasional, cyathial glands white

Richard Carter with Frankie Snow

31.9555N/82.65847W

2.18 airmi NE (34.19°) of Lumber City jct. Hwy GA 19 and Hwy US 23/341, Alligator Creek Wildlife Management Area, Little Pond

--edge of pond cypress-swamp black gum-myrtle holly pond

with *Taxodium ascendens*, *Nyssa biflora*, *Ilex myrtifolia*, *Acer rubrum*, *Magnolia virginiana*, *Persea palustris*, *Litsea aestivalis*, *Gordonia lasianthus*, *Diospyros virginiana*, *Morella cerifera*, *Lyonia lucida*, *Eubotrys racemosa*, *Vaccinium fuscatum*, *Pieris phillyreifolia*, *Smilax laurifolia*, *Hypericum myrtifolium*, *Anchistea virginica*, *Carex striata*, *Rhexia virginica*, *Rhynchospora*, *Xyris*, *Sphagnum*

23674 [3] Aquifoliaceae *Ilex glabra* (L.) A. Gray

det. R. Carter

dominant shrub along edge of pond and in adjacent flatwoods, 1-2 m tall, flowers white

23675 [9] Ebenaceae *Diospyros virginiana* L.

det. R. Carter

common tree, ca. 8 m tall, corolla white

23676 [4] Ericaceae *Vaccinium fuscatum* Aiton

det. R. Carter

plant 4-5 m tall, mature fruits black and shiny, not glaucous

--pond cypress-swamp black gum-myrtle holly pond

with *Taxodium ascendens*, *Nyssa biflora*, *Ilex myrtifolia*, *Acer rubrum*, *Magnolia virginiana*, *Persea palustris*, *Litsea aestivalis*, *Gordonia lasianthus*, *Diospyros virginiana*, *Morella cerifera*, *Lyonia lucida*, *Eubotrys racemosa*, *Vaccinium fuscatum*, *Pieris phillyreifolia*, *Smilax laurifolia*, *Hypericum myrtifolium*, *Anchistea virginica*, *Carex striata*, *Rhexia virginica*, *Rhynchospora*, *Xyris*, *Sphagnum*

23677 [3] Aquifoliaceae *Ilex myrtifolia* Walter

det. R. Carter

common tree, ca. 8 m tall, corolla white

23678 [3] Ericaceae *Pieris phillyreifolia* (Hooker) A.P. de Candolle
det. R. Carter
vine climbing beneath outer bark of pond cypress, or shrubby around stumps of pond cypress

23679 [2] Cyperaceae *Carex striata* Michaux var. *striata*
det. R. Carter
locally abundant, covering much of shallow pond bottom

Richard Carter with Frankie Snow

31.95531N/82.65887W

2.16 airmi NE (33.87°) of Lumber City jct. Hwy GA 19 and Hwy US 23/341, Alligator Creek Wildlife Management Area, along W side of Little Pond
--ecotone between pond and mesic flatwoods, disturbed peaty sand
with *Taxodium ascendens*, *Nyssa biflora*, *Ilex myrtifolia*, *Acer rubrum*, *Magnolia virginiana*, *Persea palustris*, *Lyonia lucida*, *Eubotrys racemosa*, *Anchistea virginica*, *Pieris phillyreifolia*, *Rhexia mariana*, *Rhynchospora*, *Xyris*, *Syngonanthus flavidulus*, *Lycopodiella alopecuroides*, *Drosera capillaris*, *Sphagnum*

23680 [1] Sarraceniaceae *Sarracenia minor* Walter
det. R. Carter
rare and local

Richard Carter with Frankie Snow

31.96608N/82.68523W

2.55 airmi N (352.28°) of Lumber City jct. Hwy GA 19 and Hwy US 23/341, Alligator Creek Wildlife Management Area
--disturbed sand along edge of open, seasonally wet depression

23681 [1] Poaceae *Dichanthelium acuminatum* (Swartz) Gould & Clark var. *fasciculatum* (Torrey) Freckmann
det. R. Carter
occasional

23682 [2] Poaceae *Dichanthelium villosissimum* (Nash) Freckmann var. *villosissimum*
det. R. Carter
occasional

Richard Carter with Frankie Snow

31.96672N/82.68449W

2.59 airmi N (353.46°) of Lumber City jct. Hwy GA 19 and Hwy US 23/341, Alligator Creek Wildlife Management Area
--open, drying, seasonally wet depression, sandy loam
with *Dichanthelium*, *Polypremum procumbens*, *Nuttallanthus canadensis*, *Gratiola ramosa*, *Rhexia mariana*, *Rhynchospora pusilla*, *Eleocharis melanocarpa*, *Scleria georgiana*, *Xyris*, *Drosera*

23683 [1] Poaceae *Dichanthelium erectifolium* (Nash) Gould & Clark
det. R. Carter
occasional

23684 [1] Cyperaceae *Eleocharis melanocarpa* Torrey
det. R. Carter
infrequent

23685 [3] Poaceae *Dichantherium longiligulatum* (Nash) Freckmann [*Panicum spretum* J.A. Schultes
longiligulatum (Nash) D.B. Ward]
det. R. Carter
locally common

23686 [5] Cyperaceae *Scleria georgiana* Core
det. R. Carter
locally common, achenes bony white

23687 [2] Xyridaceae *Xyris baldwiniana* J.A. Schultes
det. R. Carter
plants locally common, densely cespitose, flowers yellow, present in the morning

23688 [5] Poaceae *Dichantherium wrightianum* (Scribner) Freckmann
det. R. Carter
locally abundant

Richard Carter with Frankie Snow

31.96625N/82.68616W

2.57 airmi N (351.21°) of Lumber City jct. Hwy GA 19 and Hwy US 23/341, Alligator Creek Wildlife
Management Area

--slope of xeric sand ridge, exposed white sand

with *Quercus laevis*, *Q. margaretta*, *Chrysoma pauciflosculosa*, *Clinopodium coccineum*, *Opuntia
mesacantha*, *Licania michauxii*, *Cnidocolus stimulosus*, *Selaginella arenicola*

23689 [1] Caryophyllaceae *Sabulina caroliniana* (Walter) Small [*Arenaria caroliniana* Walter]
det. R. Carter
locally common, flowers white

Richard Carter with Frankie Snow

31.96568N/82.68518W

2.53 airmi N (352.36°) of Lumber City jct. Hwy GA 19 and Hwy US 23/341, Alligator Creek Wildlife
Management Area

--ecotone along lower slope of sand ridge and seasonally wet shallow pond

23690 [2] Poaceae *Dichantherium ovale* (Elliott) Gould & Clark var. *addisonii* (Nash) Gould & Clark
det. R. Carter
occasional

Richard Carter with Frankie Snow

31.96625N/82.68616W

2.53 airmi N (352.36°) of Lumber City jct. Hwy GA 19 and Hwy US 23/341, Alligator Creek Wildlife
Management Area

--ecotone along lower slope of sand ridge and seasonally wet shallow pond

23691 [2] Caryophyllaceae *Stipulicida setacea* Michaux

det. R. Carter

occasional, flowers white

Richard Carter with Frankie Snow

31.97134N/82.70014W

3.14 airmi NNW (337.31°) of Lumber City jct. Hwy GA 19 and Hwy US 23/341, Alligator Creek Wildlife Management Area, vic. canoe launch

--lower slope of sand ridge, loose pale brown sand, site burned earlier in the season

23692 [1] Krameriaceae *Krameria lanceolata* Torrey

det. R. Carter

plants occasional to locally common; multiple decumbent stems arising from ±central woody rootstock, corolla maroon

Richard Carter with Frankie Snow

31.97128N/82.70036W

3.14 airmi NNW (337.07°) of Lumber City jct. Hwy GA 19 and Hwy US 23/341, Alligator Creek Wildlife Management Area, vic. canoe launch

--edge of jeep trail, disturbed sand

23693 [1] Plantaginaceae *Penstemon dissectus* Elliott

det. R. Carter

plants generally rare, but locally common, <1% of plants flowering

Richard Carter with Frankie Snow

31.94501N/82.67207W

1.16 airmi NNE (21.71°) of Lumber City jct. Hwy GA 19 and Hwy US 23/341, Alligator Creek Wildlife Management Area, along N side of Livingston Rd

--xeric sand ridge, disturbed, loose gray sand

with *Quercus laevis*, *Q. margaretta*, *Chrysoma pauciflosculosa*, *Clinopodium coccineum*, *Opuntia mesacantha*

23694 [6] Cyperaceae *Carex tenax* Chapman

det. R. Carter

plants occasional to locally common, cespitose

Richard Carter with Frankie Snow

31.95726N/82.67219W

1.97 airmi NNE (12.40°) of Lumber City jct. Hwy GA 19 and Hwy US 23/341, Alligator Creek Wildlife Management Area

--open, sandy peat of clear-cut flatwoods, site heavily mechanically disturbed, scraped

with *Pteridium aquilinum*, *Lycopodiella prostrata*, *Sophranthe pilosa*, *Aletris*, *Polygala lutea*, *Rhynchospora*, *Syngonanthus flavidulus*

23695 [3] Poaceae *Dichanthelium strigosum* (Mühlenberg) Freckmann var. *strigosum*

det. R. Carter

plants locally abundant, cespitose

Richard Carter with Frankie Snow

31.95783N/82.67372W

1.99 airmi N (9.65°) of Lumber City jct. Hwy GA 19 and Hwy US 23/341, Alligator Creek Wildlife Management Area

--disturbed peaty sand of pond pine flat, along jeep trail

with *Pinus serotina*, *Cliftonia monophylla*, *Gordonia lasianthus*, *Persea palustris*, *Lyonia lucida*, *Serenoa repens*, *Arundinaria tecta*, *Pteridium aquilinum*, *Osmunda cinnamomea*, *Syngonanthus flavidulus*, *Xyris elliotii*, *Rhynchospora*, *Juncus*, *Dichantherium*, *Sphagnum*

23696 [6] Poaceae *Dichantherium webberianum* (Nash) LeBlond

det. R. Carter

plants tufted, occasional, locally common

23697 [4] Poaceae *Dichantherium wrightianum* (Scribner) Freckmann

det. R. Carter

plants tufted, occasional, locally common

23698 [4] Poaceae *Dichantherium portoricense* (Desvaux ex Hamilton) B.F. Hansen & Wunderlin subsp. *portoricense*

det. R. Carter

plants tufted, locally common

Richard Carter with Frankie Snow

31.95902N/82.67758W

2.05 airmi N (3.03°) of Lumber City jct. Hwy GA 19 and Hwy US 23/341, Alligator Creek Wildlife Management Area

--overgrown pocosin along ecotone between xeric sand ridge and pond cypress-swamp black gum-myrtle holly depression

with *Magnolia virginiana*, *Gordonia lasianthus*, *Persea palustris*, *Ilex glabra*, *Morella cerifera*, *Lyonia lucida*, *L. mariana*, *L. ligustrina foliosiflora*, *Gaylussacia tomentosa*, *Vaccinium myrsinites*, *Rhus copallinum*, *Serenoa repens*, *Pteridium aquilinum*

23699 [4] Ericaceae *Lyonia lucida* (Lamarck) K. Koch

det. R. Carter

shrub, locally common, 1.5 - 3 m tall, flowers deep purple, wine-tinted, and very fragrant (too much so!)

23700 [3] Ericaceae *Vaccinium stamineum* L. var. *caesium* (Greene) D.B. Ward

det. R. Carter

shrub, occasional, 1.5 - 2 m tall; fresh leaves abaxially very glaucous, much more so than when dried specimen; corolla white

23701 [6] Ericaceae *Gaylussacia tomentosa* (A. Gray) Pursh ex Small [*Gaylussacia frondosa* (L.) Torrey & A. Gray ex Torrey *tomentosa* A. Gray]

det. R. Carter

shrub, ca. 1 m tall, locally common

Richard Carter with Frankie Snow

31.95882N/82.67798W

2.03 airmi N (2.39°) of Lumber City jct. Hwy GA 19 and Hwy US 23/341, Alligator Creek Wildlife Management Area

--open, drying, peaty bottom of disturbed pond cypress-swamp black gum-myrtle holly depression with *Nyssa biflora*, *Taxodium ascendens*, *Ilex myrtifolia*, *Gordonia lasianthus*, *Persea palustris*, *Lyonia lucida*, *Anchistea virginica*, *Sphagnum*

23702 [2] Droseraceae *Drosera capillaris* Poiret

det. R. Carter

locally common

5/16/2019

Richard Carter with Frankie Snow

U.S.A. Georgia: Wheeler County

31.96103N/82.68252W

2.19 airmi N (355.30°) of Lumber City jct. Hwy GA 19 and Hwy US 23/341, Alligator Creek Wildlife Management Area

--cut-over sand ridge, exposed tan sand

with *Quercus laevis*, *Q. margarettae*, *Vaccinium arboreum*, *V. stamineum caesium*, *Crataegus*, *Opuntia*

23703 [3] Cyperaceae *Rhynchospora grayi* Kunth

det. R. Carter

23704 [1] Asteraceae *Gamochaeta calviceps* (Fernald) Cabrera

det. R. Carter

23705 [3] Poaceae *Dichanthelium ovale* (Elliott) Gould & Clark var. *addisonii* (Nash) Gould & Clark

det. R. Carter

23706 [2] Poaceae *Dichanthelium ovale* (Elliott) Gould & Clark var. *ovale*

det. R. Carter

23707 [5] Poaceae *Dichanthelium ovale* (Elliott) Gould & Clark var. *ovale*

det. R. Carter

23708 [2] Asteraceae *Krigia virginica* (L.) Willdenow

det. R. Carter

Richard Carter with Frankie Snow

31.95959N/82.67941W

2.08 airmi N (0.06°) of Lumber City jct. Hwy GA 19 and Hwy US 23/341, Alligator Creek Wildlife Management Area

--open sandy jeep trail through flatwoods

23709 [2] Poaceae *Festuca octoflora* Walter var. *octoflora* [*Vulpia octoflora* (Walter) Rydb. *octoflora*]

det. R. Carter

Richard Carter with Frankie Snow

31.95955N/82.68143W

2.08 airmi N (356.81°) of Lumber City jct. Hwy GA 19 and Hwy US 23/341, Alligator Creek Wildlife Management Area

--open sandy jeep trail through flatwoods

23710 [1] Convolvulaceae *Stylisma patens* (Desr.) Myint
det. R. Carter

23711 [1] Plantaginaceae *Sophranthe hispida* Bentham ex Lindley [*Gratiola hispida* (Bentham ex Lindley) Pollard]

det. R. Carter

23712 [2] Poaceae *Agrostis hyemalis* (Walter) Britton et al.

det. R. Carter

Richard Carter with Frankie Snow

31.95643N/82.67776W

1.87 airmi N (3.04°) of Lumber City jct. Hwy GA 19 and Hwy US 23/341, Alligator Creek Wildlife Management Area

--Gordonia swamp with deep mucky substrate

with *Gordonia lasianthus*, *Magnolia virginiana*, *Pinus serotina*, *Nyssa biflora*, *Cliftonia monophylla*,
Persea palustris, *Toxicodendron vernix*, *Ilex coriacea*, *Morella cerifera*, *Vaccinium fuscatum*,
Clethra alnifolia, *Smilax laurifolia*

23713 [1] Smilacaceae *Smilax laurifolia* L.
det. R. Carter

23714 [2] Aquifoliaceae *Ilex coriacea* (Pursh) Chapman

det. R. Carter

23715 [1] Ericaceae *Vaccinium fuscatum* Aiton

det. R. Carter

23716 [1] Cyrillaceae *Cliftonia monophylla* (Lamarck) Britton ex Sargent

det. R. Carter

Richard Carter with Frankie Snow

31.95673N/82.67807W

1.89 airmi N (2.45°) of Lumber City jct. Hwy GA 19 and Hwy US 23/341, Alligator Creek Wildlife Management Area

--cut-over sandridge

with *Quercus laevis*, *Q. margarettae*, *Q. incana*, *Q. hemisphaerica*, *Carya pallida*, *Vaccinium arboreum*, *V. stamineum caesium*, *Serenoa repens*, *Opuntia mesacantha*, *Clinopodium coccineum*, *Licania michauxii*, *Eriogonum tomentosum*, *Aristida beyrichiana*, *Carex tenax*, *Pt*

23717 [3] Myricaceae *Morella pumila* (Michaux) Small [*Myrica pusilla* Rafinesque]
det. R. Carter

23718 [1] Cyperaceae *Scleria ciliata* Michaux var. *ciliata*
det. R. Carter

23719 [3] Ericaceae *Vaccinium stamineum* L. var. *caesium* (Greene) D.B. Ward
det. R. Carter

23720 [1] Euphorbiaceae *Euphorbia exserta* (Small) Coker
det. R. Carter

23721 [2] Juglandaceae *Carya pallida* (W.W. Ashe) Engler & Graebner
det. R. Carter

Richard Carter with Frankie Snow

31.95605N/82.67902W

1.84 airmi N (0.78°) of Lumber City jct. Hwy GA 19 and Hwy US 23/341, Alligator Creek Wildlife
Management Area

--seepage slope along *Gordonia* swamp

with *Gordonia lasianthus*, *Magnolia virginiana*, *Nyssa biflora*, *Cliftonia monophylla*, *Persea palustris*,
Toxicodendron vernix, *Ilex coriacea*, *Rhododendron viscosum serrulatum*, *Vaccinium fuscatum*,
Lyonia lucida, *Smilax laurifolia*, *Arundinaria*, *Osmundastrum cinnamomeum*

23722 [2] Rubiaceae *Pinckneya bracteata* (Bartram) Rafinesque

det. R. Carter

shrub, 3-4 m tall, infrequent, 1 of 5 sepals greatly enlarged, petaloid and pink, very showy

Richard Carter with Frankie Snow

31.95745N/82.67802W

1.94 airmi N (2.49°) of Lumber City jct. Hwy GA 19 and Hwy US 23/341, Alligator Creek Wildlife
Management Area

--palmetto swale in sand ridge, recently burned, loose white sand

with *Serenoa repens*, *Ilex glabra*, *Lyonia mariana*, *Pteridium aquilinum*

23723 [2] Arecaceae *Serenoa repens* (Bartram) Small

det. R. Carter

locally abundant, most plants in flower, flowers fragrant

Richard Carter with Frankie Snow

31.96019N/82.68546W

2.15 airmi NNW (350.60°) of Lumber City jct. Hwy GA 19 and Hwy US 23/341, Alligator Creek Wildlife
Management Area

--mid slope of sand ridge, gently sloping to adjacent shrub bog

with *Quercus laevis*, *Q. margarettae*, *Q. incana*, *Sassafras albidum*, *Vaccinium arboreum*, *V. stamineum*
caesium, *Serenoa repens*, *Opuntia mesacantha*, *Clinopodium coccineum*, *Eriogonum*
tomentosum, *Aristida beyrichiana*, *Carex tenax*

23724 [1] Ericaceae *Lyonia mariana* (L.) D. Don

det. R. Carter

23725 [2] Euphorbiaceae *Stillingia sylvatica* Garden ex Linnaeus
det. R. Carter

Richard Carter with Frankie Snow

31.96366N/82.66336W

2.54 airmi NNE (21.70°) of Lumber City jct. Hwy GA 19 and Hwy US 23/341, Alligator Creek Wildlife
Management Area

--severely cut-over flatwoods ecotone adjacent to sandhill gordonia seep

with *Gordonia lasianthus*, *Nyssa biflora*, *Persea palustris*, *Serenoa repens*, *Rhus copallinum*, *Castanea
pumila*, *Ilex glabra*, *Vaccinium arboreum*, *V. myrsinites*, *V. stamineum caesium*, *Lyonia lucida*, *L.
ligustrina foliosiflora*, *Pteridium aquilinum*

23726 [6] Fagaceae *Castanea pumila* (L.) P. Miller

det. R. Carter

23727 [5] Ericaceae *Lyonia ligustrina* (L.) A.P. de Candolle var. *foliosiflora* (Michaux) Fernald

det. R. Carter

23728 [1] Annonaceae *Asimina angustifolia* Rafinesque [*Asimina longifolia* Kral]

det. R. Carter

6/7/2019

Richard Carter with Frankie Snow

U.S.A. Georgia: Wheeler County

31.96398N/82.67919W

2.39 airmi N (0.41°) of Lumber City jct. Hwy GA 19 and Hwy US 23/341, Alligator Creek Wildlife
Management Area

--cut-over lower slope of sand hill, near edge of seepage swamp, disturbed sand

23729 [1] Convolvulaceae *Stylisma angustifolia* (Nash) House

det. R. Carter

prostrate vine, occasional, flowers white

23730 [1] Asteraceae *Coreopsis delphiniifolia* Lam.

det. R. Carter

plants infrequent, heads yellow

Richard Carter with Frankie Snow

31.96411N/82.67887W

2.40 airmi N (0.85°) of Lumber City jct. Hwy GA 19 and Hwy US 23/341, Alligator Creek Wildlife
Management Area

--degraded lower slope of sand hill

with *Quercus laevis*, *Q. margarettae*, *Q. incana*, *Q. hemisphaerica*, *Q. nigra*, *Pinus palustris*, *Vaccinium
arboreum*, *V. stamineum caesium*, *V. myrsinites*, *Diospyros*, *Ilex glabra*, *Crataegus*, *Gaylussacia
tomentosa*, *Clinopodium coccineum*, *Opuntia mesacantha*, *Stillingia sylvatica*, *Aristida
beyrichiana*, *Schizachyrium tenerum*, *Pteridium aquilinum*, *Tephrosia virginiana*, *Solidago odora*,

Eriogonum tomentosum, *Eupatorium compositifolium*, *Baptisia simplicifolia*, *Ionactis linariifolia*,
Gymnopogon

23731 [2] Asteraceae *Marshallia ramosa* Beadle & F.E. Boynton

det. R. Carter

plants infrequent but locally common, heads pale pink

Richard Carter with Frankie Snow

31.97654N/82.67418W

3.27 airmi N (5.42°) of Lumber City jct. Hwy GA 19 and Hwy US 23/341, Alligator Creek Wildlife
Management Area

--degraded lower slope of sand hill

with *Quercus marilandica*, *Q. laevis*, *Q. margarettae*, *Q. incana*, *Q. hemisphaerica*, *Diospyros*, *Vaccinium
arboreum*, *V. stamineum caesium*, *Crataegus*, *Toxicodendron pubescens*, *Baptisia simplicifolia*,
Pteridium aquilinum, *Tephrosia virginiana*, *Eriogonum tomentosum*, *Smilax auriculata*

23732 [6] Rosaceae *Prunus alabamensis* C. Mohr

det. R. Carter

plants occasional; stump sprout, 3 m tall

6/21/2019

Richard Carter with Frankie Snow, Wilson Baker

U.S.A. Georgia: Wheeler County

31.94953N/82.66619W

1.60 airmi NE (29.08°) of Lumber City jct. Hwy GA 19 and Hwy US 23/341, Alligator Creek Wildlife
Management Area

--degraded sand ridge, disturbed sand

with *Pinus palustris*, *Quercus laevis*, *Q. margarettae*, *Q. incana*, *Licania*, *Opuntia*

23733 [1] Asteraceae *Cirsium nuttallii* A.P. de Candolle

det. R. Carter

23734 [1] Selaginellaceae *Bryodesma acanthonota* (Underwood) Škoda [*Selaginella acanthonota*
Underwood]

det. R. Carter

Richard Carter with Frankie Snow, Wilson Baker

31.96486N/82.69585W

2.64 airmi NNW (338.69°) of Lumber City jct. Hwy GA 19 and Hwy US 23/341, Alligator Creek Wildlife
Management Area

--floodplain of Little Ocmulgee River

with *Nyssa aquatica*, *N. biflora*, *Taxodium distichum*, *Pinus taeda*, *Acer rubrum*, *Quercus laurifolia*, *Q.
nigra*, *Cyrilla racemiflora*, *Vaccinium ellliottii*, *Sabal minor*, *Campsis radicans*

23737 [2] Altingiaceae *Liquidambar styraciflua* L.

det. R. Carter

large tree, common

Richard Carter with Frankie Snow, Wilson Baker

31.97803N/82.67398W

3.38 airmi N (5.46°) of Lumber City jct. Hwy GA 19 and Hwy US 23/341, Alligator Creek Wildlife Management Area

--cut-over upland woods

with *Quercus marilandica*, *Q. margarettae*, *Q. hemisphaerica*, *Q. incana*, *Diospyros*, *Prunus alabamensis*, *Pinus taeda*, *Ilex opaca*, *Acer rubrum*, *Vaccinium arboreum*, *V. stamineum caesium*, *Crataegus*, *Rhus copallina*, *Serenoa repens*, *Yucca flaccida*, *Toxicodendron pubescens*, *Hypericum hypericoides*, *Rubus cuneifolius*, *Muscadinia*, *Gelsemium sempervirens*, *Aristida beyrichiana*, *Gymnopogon*, *Eupatorium compositifolium*, *Baptisia simplicifolia*, *Berlandiera pumila*,

23738 [6] Ulmaceae *Ulmus alata* Michaux

det. R. Carter

tree, 6 m tall, infrequent

23739 [1] Boraginaceae *Lithospermum virginianum* L. [*Onosmodium virginianum* A.L.P.P. de Candolle]

det. R. Carter

infrequent

7/19/2019

Richard Carter with Frankie Snow

U.S.A. Georgia: Wheeler County

31.9538N/82.65996W

2.07 airmi NE (33.74°) of Lumber City jct. Hwy GA 19 and Hwy US 23/341, Alligator Creek Wildlife Management Area, along Livingston Rd

--flatwoods, ditch

23741 [1] Melastomataceae *Rhexia virginica* L.

det. R. Carter

common, flowers lavender-rose

23742 [2] Onagraceae *Ludwigia linearis* Walter

det. R. Carter

locally abundant, flowers yellow

23743 [1] Hypericaceae *Hypericum tetrapetalum* Lamarck

det. R. Carter

occasional, flowers yellow

23744 [3] Smilacaceae *Smilax glauca* Walter

det. R. Carter

common vine

23745 [1] Plantaginaceae *Sophranthe pilosa* (Michaux) Small [*Gratiola pilosa* Michaux]

det. R. Carter

occasional, flowers white

23746 [1] Juncaceae *Juncus repens* Michaux

det. R. Carter

locally abundant, forming mat in moist ditch bottom

23747 [1] Cyperaceae *Scirpus cyperinus* (L.) Kunth

det. R. Carter

locally common, forming large clumps

--bayswamp and adjacent sandy flatwoods, soil heavily mechanically disturbed
with *Pinus palustris*, *P. serotina*, *P. taeda*, *Gordonia lasianthus*, *Cliftonia monophylla*, *Persea palustris*,
Ilex glabra, *Hypericum tetrapetalum*, *Rhexia alifanus*, *R. mariana*, *Juncus scirpoides*, *Xyris*
caroliniana, *Polygala lutea*, *Andropogon*, *Pteridium aquilinum*, *Lycopodiella alopecuroides*

23749 [3] Theaceae *Gordonia lasianthus* (L.) Ellis

det. R. Carter

common tree, corolla white, contrasting with numerous yellow stamens

--sandy flatwoods adjacent to bayswamp, soil heavily mechanically disturbed
with *Pinus palustris*, *P. serotina*, *P. taeda*, *Gordonia lasianthus*, *Cliftonia monophylla*, *Persea palustris*,
Ilex glabra, *Hypericum tetrapetalum*, *Rhexia alifanus*, *R. mariana*, *Juncus scirpoides*, *Xyris*
caroliniana, *Polygala lutea*, *Andropogon*, *Pteridium aquilinum*, *Lycopodiella alopecuroides*

23750 [2] Poaceae *Coleataenia longifolia* (Torrey) Soreng subsp. *longifolia*

det. R. Carter

occasional

23751 [1] Pinaceae *Pinus taeda* L.

det. R. Carter

common tree

23752 [1] Melastomataceae *Rhexia alifanus* Walter

det. R. Carter

occasional, flowers lavender-purple

23753 [1] Melastomataceae *Rhexia alifanus* Walter

det. R. Carter

occasional, flowers lavender-purple

23754 [2] Onagraceae *Ludwigia virgata* Michaux

det. R. Carter

occasional, flowers yellow

23755 [1] Cyperaceae *Scleria ciliata* Michaux var. *glabra* (Chapman) Fairey

det. R. Carter

locally common

Richard Carter with Frankie Snow

31.95883N/82.66195W

2.29 airmi NE (26.61°) of Lumber City jct. Hwy GA 19 and Hwy US 23/341, Alligator Creek Wildlife
Management Area

--disturbed mesic flatwoods, sandy soil

with *Quercus incana*, *Diospyros*, *Vaccinium arboreum*, *Persea palustris*, *Ilex glabra*, *Rhus copallina*, *V. myrsinites*, *Lyonia mariana*, *Serenoa repens*, *Smilax auriculata*, *Pteridium aquilinum*, *Sophranthe hispida*

23756 [1] Malvaceae *Hibiscus aculeatus* Walter

det. R. Carter

plants occasional, flowers creamy white, becoming pink with age, purple basally

Richard Carter with Frankie Snow

31.95933N/82.66434W

2.26 airmi NE (23.05°) of Lumber City jct. Hwy GA 19 and Hwy US 23/341, Alligator Creek Wildlife Management Area

--disturbed subxeric flatwoods, sandy soil

with *Quercus margarettae*, *Q. incana*, *Q. hemisphaerica*, *Q. elliotii*, *Persea*, *Rhus copallina*, *Callicarpa americana*, *Serenoa repens*, *Pteridium aquilinum*

23757 [1] Convolvulaceae *Ipomoea pandurata* (L.) G.F.W. Meyer

det. R. Carter

twining vine, occasional

--disturbed subxeric flatwoods, sandy soil, roadside

23758 [3] Poaceae *Eragrostis virginica* (Zuccagni) Steudel [*Eragrostis refracta* (Muhlenberg) Scribner]

det. R. Carter

plants cespitose, occasional

--flatwoods ditch

23759 [1] Xyridaceae *Xyris jupicai* L.C. Richard

det. R. Carter

common

23760 [1] Hypericaceae *Hypericum galioides* Lamarck

det. R. Carter

low shrub, common

Richard Carter with Frankie Snow

31.96115N/82.68231W

2.22 airmi N (355.75°) of Lumber City jct. Hwy GA 19 and Hwy US 23/341, Alligator Creek Wildlife Management Area

--xeric sand ridge

with *Quercus laevis*, *Q. margarettae*, *Q. incana*, *Diospyros*, *Vaccinium arboreum*, *V. stamineum caesium*, *Rhus copallina*, *Yucca filamentosa*, *Toxicodendron pubescens*, *Licania michauxii*, *Chrysoma pauciflosculosa*, *Aristida beyrichiana*, *Opuntia*, *Cnidioscolus stimulosus*, *Eriogonum tomentosum*, *Rhynchospora grayi*, *Cyperus grayi*, *Solidago odora*, *Liatris tenuifolius*, *Paronychia hernarioides*, *Stipulicida setacea*, *Bulbostylis warei*

23761 [2] Amaranthaceae *Froelichia floridana* (Nuttall) Moquin-Tandon

det. R. Carter

plants occasional

Richard Carter with Frankie Snow

31.96102N/82.68052W

2.19 airmi N (358.40°) of Lumber City jct. Hwy GA 19 and Hwy US 23/341, Alligator Creek Wildlife Management Area

--ecotone between sand ridge and pond cypress-gordonia-slash pine wetland

with *Quercus hemisphaerica*, *Persea palustris*, *Cliftonia monophylla*, *Clethra alnifolia*, *Lyonia lucida*, *L. mariana*, *Ilex coriacea*, *I. glabra*, *Vaccinium fuscatum*, *Serenoa repens*, *Gaylussacia tomentosa*, *Aronia arbutifolia*, *Vaccinium myrsinites*, *Pieris phyllireifolia*, *Smilax laurifolia*, *Pteridium aquilinum*

23762 [1] Rosaceae *Aronia arbutifolia* (L.) Persoon [*Photinia pyrifolia* (Lam.) K. Roberts. & J.B. Phipps]

det. R. Carter

shrub, 2 m tall, common

23763 [1] Asteraceae *Coreopsis delphinifolia* Lamarck

det. R. Carter

occasional, heads yellow

Richard Carter with Frankie Snow

31.95585N/82.69144W

1.97 airmi NNW (339.16°) of Lumber City jct. Hwy GA 19 and Hwy US 23/341, Alligator Creek Wildlife Management Area

--steep sandy bluff along north bank of Little Ocmulgee River, actively eroding loose sand with sparse vegetation

23764 [2] Cyperaceae *Bulbostylis ciliatifolia* (Elliott) Fernald

det. R. Carter

plants cespitose, common

23765 [2] Molluginaceae *Mollugo verticillata* L.

det. R. Carter

locally common, prostrate stems radiating from taproot

23766 [1] Rubiaceae *Diodella teres* (Walter) Small [*Diodia teres* Walter]

det. R. Carter

locally common

--recently exposed moist sand along north bank of Little Ocmulgee River, at base of steep sandy bluff

23767 [1] Onagraceae *Ludwigia glandulosa* Walter

det. R. Carter

infrequent

--steep sandy bluff along north bank of Little Ocmulgee River, actively eroding loose sand with sparse vegetation

23768 [1] Convolvulaceae *Stylisma patens* (Desr.) Myint

det. R. Carter

occasional, stems prostrate on exposed sand

23769 [1] Asteraceae *Pityopsis graminifolia* (Michaux) Nuttall var. *graminifolia*
det. R. Carter
occasional, heads yellow

--recently exposed moist sand along north bank of Little Ocmulgee River, at base of steep sandy bluff

23770 [1] Linderniaceae *Lindernia dubia* (L.) Pennell var. *anagallidea* (Michaux) Cooperrider
det. R. Carter
locally common

23771 [1] Linderniaceae *Lindernia dubia* (L.) Pennell var. *dubia*
det. R. Carter
locally common

Richard Carter with Frankie Snow

31.95432N/82.69078W

1.85 airmi NNW (339.10°) of Lumber City jct. Hwy GA 19 and Hwy US 23/341, Alligator Creek Wildlife
Management Area

--floodplain of Little Ocmulgee River

with *Nyssa ogeche*, *N. biflora*, *Taxodium distichum*, *Acer rubrum*, *Liquidambar styraciflua*, *Quercus
laurifolia*

23772 [1] Acanthaceae *Dyschoriste humistrata* (Michaux) Kuntze
det. R. Carter
plants common but rarely flowering

23773 [2] Cyperaceae *Carex intumescens* Rudge
det. R. Carter
common

23774 [2] Poaceae *Digitaria ciliaris* (Retzius) Köler
det. R. Carter
plants locally abundant, leaves with a gray-green cast

Richard Carter with Frankie Snow

31.95512N/82.69151W

1.92 airmi NNW (338.50°) of Lumber City jct. Hwy GA 19 and Hwy US 23/341, Alligator Creek Wildlife
Management Area

--base of bluff and adjacent low terrace in floodplain of Little Ocmulgee River

with *Quercus laurifolia*, *Pinus taeda*, *Taxodium distichum*, *Nyssa*, *Liquidambar*, *Diospyros*, *Ilex opaca*,
Ditrysinia, *Asimina parviflora*, *Vaccinium elliotii*, *Callicarpa americana*

23775 [2] Fagaceae *Quercus laurifolia* Michaux
det. R. Carter
common tree, ca. 12 m tall

23776 [2] Aquifoliaceae *Ilex opaca* Aiton
det. R. Carter

tree with smooth, pale bark, ca. 7 in dbh, occasional

Richard Carter with Frankie Snow

31.95781N/82.69295W

2.12 airmi NNW (338.22°) of Lumber City jct. Hwy GA 19 and Hwy US 23/341, Alligator Creek Wildlife Management Area

--open jeep trail on terrace adjacent to Little Ocmulgee River

23777 [1] Turneraceae *Piriqueta caroliniana* (Walter) Urban var. *caroliniana* [*Piriqueta cistoides* (L.) Grisebach subsp. *caroliniana* (Walter) M.M. Arbo]

det. R. Carter

occasional, flowers yellow

Richard Carter with Frankie Snow

31.95853N/82.69361W

2.18 airmi NNW (337.62°) of Lumber City jct. Hwy GA 19 and Hwy US 23/341, Alligator Creek Wildlife Management Area

--low bluff of terrace along Little Ocmulgee River

with *Quercus alba*, *Q. michauxii*, *Liquidambar styraciflua*, *Pinus taeda*

23778 [3] Rosaceae *Crataegus marshallii* Eggleston

det. R. Carter

understory shrub with spreading crown, 3-4 m tall, infrequent

Richard Carter with Frankie Snow

31.95468N/82.68816W

1.82 airmi NNW (343.68°) of Lumber City jct. Hwy GA 19 and Hwy US 23/341, Alligator Creek Wildlife Management Area

--edge of heavily disturbed hammock

with *Magnolia grandiflora*, *Carya glabra*, *C. pallida*, *Quercus hemisphaerica*, *Q. nigra*, *Ilex opaca*, *Pinus taeda*, *Prunus caroliniana*, *Aralia spinosa*, *Vaccinium arboreum*, *Cartrema americana*, *Persea borbonia*, *Symplocos tinctoria*, *Sideroxylon lanuginosa*, *Asimina parviflora*, *Callicarpa americana*

23779 [3] Menispermaceae *Cocculus carolinus* (L.) A.P. de Candolle

det. R. Carter

locally common climbing vine

23780 [3] Smilacaceae *Smilax auriculata* Walter

det. R. Carter

locally common climbing vine

23781 [5] Lamiaceae *Callicarpa americana* L.

det. R. Carter

occasional

Richard Carter with Frankie Snow

31.97621N/82.67463W

3.24 airmi N (4.97°) of Lumber City jct. Hwy GA 19 and Hwy US 23/341, Alligator Creek Wildlife Management Area

--degraded xeric sand ridge

with *Quercus laevis*, *Q. margarettae*, *Diospyros virginiana*, *Vaccinium stamineum caesium*, *Crataegus*, *Opuntia mesacantha*, *Solidago odora*, *Aristida beyrichiana*, *Eriogonum tomentosum*, *Baptisia perfoliata*

23782 [1] Asteraceae *Silphium compositum* Michaux var. *ovatifolium* Torrey & A. Gray
det. R. Carter
infrequent

Richard Carter with Frankie Snow

31.9741N/82.67177W

3.12 airmi N (8.27°) of Lumber City jct. Hwy GA 19 and Hwy US 23/341, Alligator Creek Wildlife Management Area

--degraded xeric flatwoods, exposed white sand

with *Quercus margarettae*, *Q. incana*, *Q. hemisphaerica*, *Diospyros virginiana*, *Vaccinium arboreum*, *V. stamineum caesium*, *Serenoa repens*, *Crataegus*, *Smilax auriculata*, *Opuntia mesacantha*, *Solidago odora*, *Aristida beyrichiana*, *Eupatorium compositifolium*, *Eriogonum tomentosum*, *Krameria lanceolata*, *Pteridium aquilinum*

23783 [1] Apocynaceae[Asclepiadaceae] *Asclepias tuberosa* Walter var. *tuberosa*
det. R. Carter
occasional, flowers orange

23784 [1] Euphorbiaceae *Croton glandulosus* L. var. *septentrionalis* Müller of Aargau

det. R. Carter

plant with aromatic roots, occasional

Richard Carter with Frankie Snow

31.98037N/82.67972W

3.51 airmi N (359.73°) of Lumber City jct. Hwy GA 19 and Hwy US 23/341, Alligator Creek Wildlife Management Area

--ecotone between bay head and sand ridge

23785 [2] Rosaceae *Prunus serotina* Ehrhart var. *serotina*

det. R. Carter

tree, 8-10 m tall, occasional

Richard Carter with Frankie Snow

31.98071N/82.67957W

3.54 airmi N (359.84°) of Lumber City jct. Hwy GA 19 and Hwy US 23/341, Alligator Creek Wildlife Management Area

--head of bay creek

with *Liriodendron tulipifera*, *Nyssa biflora*, *Magnolia virginiana*, *Persea palustris*, *Ilex coriacea*, *Morella cerifera*, *M. caroliniensis*, *Lyonia lucida*, *Smilax laurifolia*, *Osmundastrum cinnamomeum*, *Sphagnum*

23786 [1] Magnoliaceae *Liriodendron tulipifera* L.
det. R. Carter
tree, 8-10 in dbh, common

23787 [1] Lentibulariaceae *Utricularia juncea* Vahl
det. R. Carter
locally common

23788 [2] Cyperaceae *Rhynchospora leptocarpa* (Chapman ex Britton) Small
det. R. Carter
plants cespitose, stems lax and reclining on adjacent vegetation, locally common

23789 [1] Cyperaceae *Rhynchospora gracilentia* A. Gray
det. R. Carter
plants cespitose, locally common

23790 [1] Xyridaceae *Xyris curtissii* Malme [*Xyris difformis* Chapman *curtissii* (Malme) Kral]
det. R. Carter
plants locally common

Richard Carter with Frankie Snow

31.98106N/82.68106W

3.57 airmi N (358.46°) of Lumber City jct. Hwy GA 19 and Hwy US 23/341, Alligator Creek Wildlife Management Area

--clear-cut strip on slope, sandy loam

with *Quercus marilandica*, *Q. laevis*, *Q. margarettae*, *Q. incana*, *Q. hemisphaerica*, *Liquidambar styraciflua*, *Diospyros virginiana*, *Vaccinium arboreum*, *Morella cerifera*, *Ilex decidua*, *Rhus copallina*, *Eupatorium compositifolium*, *Pteridium aquilinum*

23791 [2] Hypericaceae *Hypericum galioides* Lamarck
det. R. Carter
shrub, 1 -1.5 m tall, flowers yellow, occasional

7/25/2019

Richard Carter with Frankie Snow

U.S.A. Georgia: Wheeler County

31.94681N/82.66901W

1.35 airmi NNE (26.89°) of Lumber City jct. Hwy GA 19 and Hwy US 23/341, Alligator Creek Wildlife Management Area

--degraded sand ridge, xeric, exposed white sand

with *Quercus laevis*, *Q. margarettae*, *Opuntia mesacantha*, *Chrysoma pauciflosculosa*, *Licania michauxii*, *Clinopodium coccineum*, *Cnidioscolus*, *Polanisia tenuifolia*, *Stipulicida setacea*, *Bryodesma*

23792 [3] Selaginellaceae *Bryodesma arenicola* (Underwood) Soják subsp. *arenicola*
det. R. Carter
occasional, forming tufts

23793 [1] Chrysobalanaceae *Licania michauxii* Prance
det. R. Carter
plant clonal, forming large patches, common

23794 [1] Poaceae *Paspalum notatum* Flügge
det. R. Carter
locally common along road

23795 [1] Passifloraceae *Passiflora incarnata* L.
det. R. Carter
locally common, forming patches

23796 [1] Euphorbiaceae *Cnidoscolus stimulosus* (Michaux) Engelmann & A. Gray
det. R. Carter
plant with stinging hairs, occasional, flowers white

Richard Carter with Frankie Snow

31.95663N/82.6945W

2.08 airmi NNW (334.92°) of Lumber City jct. Hwy GA 19 and Hwy US 23/341, Alligator Creek Wildlife
Management Area

--floodplain along northeast bank of Little Ocmulgee River

23797 [3] Poaceae *Chasmanthium sessiliflorum* (Poirlet) Yates var. *sessiliflorum*

det. R. Carter
locally common

--open sandy riparian zone along northeast bank of Little Ocmulgee River

23798 [2] Poaceae *Urochloa platyphylla* (Munro ex Wright) R. Webster

det. R. Carter
occasional

23799 [1] Poaceae *Digitaria bicornis* (Lamarck) Roemer & J.A. Schultes

det. R. Carter
occasional

23800 [1] Cyperaceae *Lipocarpa maculata* (Michaux) Torrey [*Cyperus neotropicalis* Alain]

det. R. Carter
occasional

--riparian zone along northeast bank of Little Ocmulgee River, in shallow water along edge of channel

23801 [1] Poaceae *Luziola fluitans* (Michaux) Terrell & H. Robinson var. *fluitans* [*Hydrochloa carolinensis* Palisot de Beauvois]

det. R. Carter
plants rooted in sandy stream bottom, stems being swept along by flowing water

--open sandy riparian zone along northeast bank of Little Ocmulgee River

23802 [1] Lythraceae *Rotala ramosior* (L.) Koehne

det. R. Carter

occasional

23803 [1] Euphorbiaceae *Acalypha gracilens* A. Gray
det. R. Carter
occasional

23804 [1] Poaceae *Dichantherium dichotomum* (L.) Gould var. *dichotomum*
det. R. Carter
locally common

23805 [1] Euphorbiaceae *Phyllanthus caroliniensis* Walter subsp. *caroliniensis*
det. R. Carter
occasional

--riparian zone along northeast bank of Little Ocmulgee River, recently exposed moist sand along edge
of channel

23806 [1] Onagraceae *Ludwigia palustris* (L.) Elliott
det. R. Carter
prostrate herb, occasional

23807 [1] Linderniaceae *Micranthemum umbrosum* (J.F. Gmelin) Blake
det. R. Carter
prostrate herb, rooting at the nodes, common

--open sandy riparian zone along northeast bank of Little Ocmulgee River

23808 [2] Euphorbiaceae *Euphorbia maculata* L. [*Chamaesyce maculata* (L.) Small]
det. R. Carter
prostrate herb with latex, occasional

23809 [2] Euphorbiaceae *Euphorbia maculata* L. [*Chamaesyce maculata* (L.) Small]
det. R. Carter
±upright herb with latex, occasional

--floodplain along northeast bank of Little Ocmulgee River

23810 [3] Poaceae *Leersia virginica* Willdenow
det. R. Carter
locally common

23811 [1] Bignoniaceae *Campsis radicans* (L.) Seemann ex Bureau
det. R. Carter
occasional vine with orange flowers

Richard Carter with Frankie Snow
31.95853N/82.69361W

2.18 airmi NNW (337.62°) of Lumber City jct. Hwy GA 19 and Hwy US 23/341, Alligator Creek Wildlife
Management Area

--low bluff of terrace along Little Ocmulgee River floodplain

23812 [3] Fagaceae *Quercus michauxii* Nuttall
det. R. Carter
tree, 8-10 m tall, infrequent

23813 [2] Fagaceae *Quercus alba* L.
det. R. Carter
tree, 8-10 m tall, infrequent

Richard Carter with Frankie Snow
31.95663N/82.6945W

2.08 airmi NNW (334.92°) of Lumber City jct. Hwy GA 19 and Hwy US 23/341, Alligator Creek Wildlife Management Area

--floodplain along northeast bank of Little Ocmulgee River

23814 [2] Arecaceae *Sabal minor* (Jacquin) Persoon
det. R. Carter
common

23815 [5] Aquifoliaceae *Ilex decidua* Walter var. *decidua*
det. R. Carter
understory shrub, 4-5 m tall, occasional

23816 [9] Aquifoliaceae *Ilex decidua* Walter var. *decidua*
det. R. Carter
understory shrub, 4-5 m tall, occasional

--riparian zone along northeast bank of Little Ocmulgee River

23817 [2] Betulaceae *Betula nigra* L.
det. R. Carter
tree with platy bark, ±exfoliating in papery sheets, 10 m tall, occasional

--floodplain along northeast bank of Little Ocmulgee River

23818 [3] Sapindaceae[Aceraceae] *Acer rubrum* L. var. *trilobum* Torrey & A. Gray ex K. Koch
det. R. Carter
tree, 10 m tall, common

Richard Carter with Frankie Snow
31.97126N/82.70034W

3.14 airmi NNW (337.09°) of Lumber City jct. Hwy GA 19 and Hwy US 23/341, Alligator Creek Wildlife Management Area

--open disturbed jeep trail on bluff at edge of sand ridge along east bank of Alligator Creek, sandy soil with *Pinus taeda*, *P. palustris*, *Quercus nigra*, *Q. incana*, *Q. margarettae*, *Liquidambar styraciflua*, *Diospyros virginiana*, *Vaccinium arboreum*, *Serenoa repens*, *Pteridium aquilinum*, *Aristida beyrichiana*

23819 [1] Polygalaceae *Polygala curtisii* A. Gray
det. R. Carter
locally common

Richard Carter with Frankie Snow

31.97243N/82.70114W

3.23 airmi NNW (336.87°) of Lumber City jct. Hwy GA 19 and Hwy US 23/341, Alligator Creek Wildlife Management Area

--terrace in floodplain along east bank of Alligator Creek

with *Quercus laurifolia*, *Liquidambar styraciflua*, *Pinus taeda*, *Nyssa sylvatica*, *Acer rubrum*, *Vaccinium elliotii*, *Asimina parviflora*, *Serenoa repens*

23820 [4] Smilacaceae *Smilax glauca* Walter

det. R. Carter

vine with glaucous abaxial leaf surfaces, common

23821 [2] Smilacaceae *Smilax bona-nox* L. var. *bona-nox*

det. R. Carter

common vine

23822 [3] Cornaceae[Nyssaceae] *Nyssa sylvatica* Marshall

det. R. Carter

tree, 7-8 m tall, occasional

Richard Carter with Frankie Snow

31.97355N/82.69918W

3.26 airmi NNW (339.26°) of Lumber City jct. Hwy GA 19 and Hwy US 23/341, Alligator Creek Wildlife Management Area

--upper slope of wooded bluff along western edge of sand ridge and creek floodplain

with *Quercus laevis*, *Q. margarettae*, *Q. incana*, *Q. hemisphaerica*, *Pinus taeda*, *Vaccinium arboreum*, *Cartrema americana*, *Hamamelis virginiana*, *Amelanchier arborea*

23823 [1] Rosaceae *Amelanchier arborea* (Michaux f.) Fernald

det. R. Carter

tree, 8 m tall, occasional

23824 [1] Dennstaedtiaceae *Pteridium latiusculum* (Desvaux) Hieronymus ex Fries var. *pseudocaudatum* (Clute) Maxon

det. R. Carter

common

Richard Carter with Frankie Snow

31.9743N/82.69881W

3.30 airmi NNW (339.93°) of Lumber City jct. Hwy GA 19 and Hwy US 23/341, Alligator Creek Wildlife Management Area

--shaded sphagnum seep at base of bluff along floodplain of Alligator Creek

23825 [1] Osmundaceae *Osmundastrum cinnamomeum* (L.) C. Presl [*Osmunda cinnamomea* L.]

det. R. Carter

locally common

23826 [1] Thelypteridaceae *Macrothelypteris torresiana* (Gaudichaud-Beaupré) Ching [*Thelypteris torresiana* (Gaudichaud-Beaupré) Alston]

det. R. Carter
locally common

23827 [1] Blechnaceae *Lorinseria areolata* (L.) C. Presl

det. R. Carter
locally common

23828 [1] Cyperaceae *Rhynchospora corniculata* (L.) A. Gray

det. R. Carter
locally common

23829 [2] Osmundaceae *Osmunda spectabilis* Willdenow [*Osmunda regalis* L. *spectabilis* (Willd.) A. Gray]

det. R. Carter
occasional

23830 [1] Ericaceae *Leucothoe axillaris* (Lamarck) D. Don

det. R. Carter
shrub 1-1.5 m tall, forming low thickets, locally abundant

23831 [3] Cyperaceae *Rhynchospora leptocarpa* (Chapman ex Britton) Small

det. R. Carter
plants cespitose, stems lax, reclining on adjacent vegetation, locally common

Richard Carter with Frankie Snow

31.97352N/82.69154W

3.12 airmi NNW (346.92°) of Lumber City jct. Hwy GA 19 and Hwy US 23/341, Alligator Creek Wildlife Management Area

--degraded sand ridge, xeric, exposed white sand, along edge of scrub with *Pinus palustris*, *Quercus laevis*, *Q. margarettae*, *Q. incana*, *Vaccinium arboreum*, *Aristida beyrichiana*

23832 [1] Apocynaceae[Asclepiadaceae] *Asclepias humistrata* Walter

det. R. Carter
plant exuding latex, infrequent

8/18/2019

Richard Carter with Frankie Snow

U.S.A. Georgia: Wheeler County

31.95362N/82.65781W

2.10 airmi NNE (37.14°) of Lumber City jct. Hwy GA 19 and Hwy US 23/341, Alligator Creek Wildlife Management Area, vic. kiosk along Livingston Rd

--flatwoods ditch

23833 [2] Onagraceae *Ludwigia pilosa* Walter

det. R. Carter
locally common

--gravelly roadside

23834 [1] Cyperaceae *Cyperus compressus* L.

det. R. Carter
occasional

23835 [1] Poaceae *Setaria pumila* (Poir.) Roem. & J.A. Schultes

det. R. Carter
occasional

--sandy roadside

23836 [2] Poaceae *Eragrostis virginica* (Zuccagni) Steudel [*Eragrostis refracta* (Muhl.) Scribner]

det. R. Carter
occasional to locally common

23837 [1] Poaceae *Paspalum urvillei* Steudel

det. R. Carter
common

Richard Carter with Frankie Snow

31.95702N/82.66019W

2.22 airmi NNE (30.57°) of Lumber City jct. Hwy GA 19 and Hwy US 23/341, Alligator Creek Wildlife Management Area, Big Pond

--exsiccated pond bottom

with *Taxodium ascendens*, *Nyssa biflora*, *Acer rubrum*, *Persea palustris*, *Litsea aestivalis*, *Ilex myrtifolia*, *Lyonia lucida*, *Eubotrys racemosa*, *Smilax laurifolia*, *Pieris phillyreifolia*, *Carex glaucescens*, *C. striata*, *Dulichium arundinaceum*, *Xyris fimbriata*, *Scirpus cyperinus*, *Rhynchospora cephalantha*, *R. filiformis*, *R. harperi*, *Scleria muehlenbergia*, *Juncus repens*, *Ludwigia pilosa*, *Proserpinaca pectinata*

23838 [1] Cyperaceae *Eleocharis brittonii* Svenson ex Small

det. R. Carter
occasional, cespitose

23839 [4] Cyperaceae *Rhynchospora cephalantha* A. Gray var. *cephalantha*

det. R. Carter
common

23840 [4] Haloragaceae *Proserpinaca pectinata* Lam.

det. R. Carter
locally abundant

23841 [1] Cyperaceae *Fimbristylis autumnalis* (L.) Roem. & J.A. Schultes

det. R. Carter
locally abundant in lowest areas

23842 [1] Poaceae *Dichanthelium leucothrix* (Nash) Freckmann
det. R. Carter
occasional

23843 [3] Cyperaceae *Rhynchospora filifolia* A. Gray
det. R. Carter
occasional, cespitose

23844 [1] Cyperaceae *Rhynchospora filifolia* A. Gray
det. R. Carter
occasional, cespitose

23845 [2] Cyperaceae *Carex glaucescens* Elliott
det. R. Carter
common

23846 [5] Cyperaceae *Rhynchospora harperi* Small
det. R. Carter
locally common

23847 [3] Cyperaceae *Scleria muehlenbergii* Steudel
det. R. Carter
locally abundant

23848 [1] Bromeliaceae *Tillandsia usneoides* (L.) L.
det. R. Carter
common epiphyte on pond cypress and other trees

23849 [1] Melastomataceae *Rhexia virginica* L.
det. R. Carter
common

23850 [2] Cupressaceae *Taxodium ascendens* Brongniart
det. R. Carter
tree, 7-8 m tall, common

Richard Carter with Frankie Snow

31.95811N/82.66143W

2.24 airmi NNE (28.00°) of Lumber City jct. Hwy GA 19 and Hwy US 23/341, Alligator Creek Wildlife
Management Area, Big Pond

--exsiccated pond bottom

with *Taxodium ascendens*, *Nyssa biflora*, *Acer rubrum*, *Persea palustris*, *Litsea aestivalis*, *Ilex myrtifolia*,
Lyonia lucida, *Eubotrys racemosa*, *Smilax laurifolia*, *Pieris phillyreifolia*, *Carex glaucescens*, *C.*
striata, *Dulichium arundinaceum*, *Xyris fimbriata*, *Scirpus cyperinus*, *Rhynchospora cephalantha*,
R. filiformis, *R. harperi*, *Scleria muehlenbergia*, *Juncus repens*, *Ludwigia pilosa*, *Proserpinaca*
pectinata

23851 [1] Xyridaceae *Xyris flabelliformis* Chapman

det. R. Carter
locally abundant on exposed peaty soil

23852 [1] Blechnaceae *Anchistea virginica* (L.) C. Presl [*Woodwardia virginica* (L.) J.E. Smith]

det. R. Carter
locally common on exposed peaty soil

Richard Carter with Frankie Snow

31.95751N/82.65902W

2.28 airmi NNE (31.63°) of Lumber City jct. Hwy GA 19 and Hwy US 23/341, Alligator Creek Wildlife
Management Area

--recently burned flatwoods along margin of pond

23853 [1] Ericaceae *Vaccinium myrsinites* Lam.

det. R. Carter
shrub, 3-4 dm tall, common

Richard Carter with Frankie Snow

31.95753N/82.65872W

2.29 airmi NNE (31.97°) of Lumber City jct. Hwy GA 19 and Hwy US 23/341, Alligator Creek Wildlife
Management Area

--ditch through recently burned flatwoods, sandy soil

23854 [1] Xyridaceae *Xyris jupicai* L.C. Richard

det. R. Carter
locally common

23855 [1] Cyperaceae *Fimbristylis autumnalis* (L.) Roem. & J.A. Schultes

det. R. Carter
locally common, cespitose

--recently burned flatwoods

23856 [2] Pinaceae *Pinus elliotii* Engelmann

det. R. Carter
3 m tall, occasional

Richard Carter with Frankie Snow

31.96023N/82.66248W

2.35 airmi NNE (25.00°) of Lumber City jct. Hwy GA 19 and Hwy US 23/341, Alligator Creek Wildlife
Management Area

--edge of degraded mesic flatwoods over sand

23857 [2] Poaceae *Panicum virgatum* L. var. *virgatum*

det. R. Carter
occasional, forming large clumps

23858 [1] Cistaceae *Lechea mucronata* Raf

det. R. Carter

occasional

23859 [1] Lauraceae *Persea palustris* (Raf.) Sargent
det. R. Carter
small tree, occasional

23860 [1] Fabaceae *Stylosanthes biflora* (L.) Britton et al.
det. R. Carter
occasional, flowers yellow

23861 [1] Asteraceae *Berlandiera pumila* (Michaux) Nuttall var. *pumila*
det. R. Carter
occasional, rays yellow

23862 [1] Polygalaceae *Asemeia grandiflora* (Walter) Small [*Polygala grandiflora* Walter]
det. R. Carter
occasional, roots aromatic, flowers purplish blue

23863 [1] Fabaceae *Clitoria mariana* L. var. *mariana*
det. R. Carter
rare, corolla blue

23864 [1] Apiaceae *Eryngium yuccifolium* Michaux
det. R. Carter
occasional

Richard Carter with Frankie Snow

31.9617N/82.663W

2.43 airmi NNE (23.35°) of Lumber City jct. Hwy GA 19 and Hwy US 23/341, Alligator Creek Wildlife
Management Area

--edge of degraded mesic flatwoods over sand

23865 [7] Vitaceae *Muscadinia rotundifolia* (Michaux) Small var. *munsoniana* (J.H. Simpson ex
Planchon) Weakley & Gandhi

det. R. Carter
occasional vine

Richard Carter with Frankie Snow

31.96099N/82.66743W

2.29 airmi NNE (17.87°) of Lumber City jct. Hwy GA 19 and Hwy US 23/341, Alligator Creek Wildlife
Management Area

--mechanically disturbed ecotone along edge of pocosin, moist sand

23866 [1] Xyridaceae *Xyris flabelliformis* Chapman

det. R. Carter
occasional and local

23867 [4] Hypericaceae *Hypericum cistifolium* Lam.

det. R. Carter
locally common

Richard Carter with Frankie Snow

31.95945N/82.66744W

2.19 airmi NNE (18.71°) of Lumber City jct. Hwy GA 19 and Hwy US 23/341, Alligator Creek Wildlife
Management Area

--mechanically disturbed ecotone along edge of pocosin, sand

23868 [1] Poaceae *Paspalum setaceum* Michaux var. *longepedunculatum* (LeConte) A. Wood

det. R. Carter

occasional

23869 [1] Cistaceae *Lechea torreyi* Leggett ex Britton var. *congesta* Hodgdon ex Lemke

det. R. Carter

occasional

23870 [2] Poaceae *Paspalum setaceum* Michaux var. *setaceum*

det. R. Carter

occasional

23871 [2] Poaceae *Paspalum setaceum* Michaux var. *longepedunculatum* (LeConte) A. Wood

det. R. Carter

occasional

23872 [1] Fagaceae *Quercus nigra* L.

det. R. Carter

occasional

Richard Carter with Frankie Snow

31.95745N/82.68224W

1.94 airmi NNW (355.17°) of Lumber City jct. Hwy GA 19 and Hwy US 23/341, Alligator Creek Wildlife
Management Area

--degraded sand ridge

23873 [2] Lauraceae *Sassafras albidum* (Nuttall) Nees

det. R. Carter

occasional

23874 [2] Vitaceae *Parthenocissus quinquefolia* (L.) Planchon

det. R. Carter

occasional

23875 [2] Asteraceae *Croptilon divaricatum* (Nuttall) Raf.

det. R. Carter

locally common, heads yellow

Richard Carter with Frankie Snow

31.95458N/82.68766W

1.80 airmi NNW (344.52°) of Lumber City jct. Hwy GA 19 and Hwy US 23/341, Alligator Creek Wildlife Management Area

--degraded sandy hammock

with *Magnolia grandiflora*, *Carya glabra*, *C. pallida*, *Quercus hemisphaerica*, *Q. nigra*, *Ilex opaca*, *Pinus taeda*, *Prunus caroliniana*, *Aralia spinosa*, *Vaccinium arboreum*, *Cartrema americana*, *Persea borbonia*, *Symplocos tinctoria*, *Sideroxylon lanuginosa*, *Asimina parviflora*, *Callicarpa americana*

23876 [5] Rosaceae *Prunus caroliniana* (P. Miller) Aiton

det. R. Carter

tree 5-6 m tall, occasional

23877 [2] Sapotaceae *Sideroxylon lanuginosum* Michaux subsp. *lanuginosum*

det. R. Carter

shrub, 2.5 m tall, occasional

23878 [5] Sapotaceae *Sideroxylon lanuginosum* Michaux subsp. *lanuginosum*

det. R. Carter

shrub, 3 m tall, occasional, leaves yellowish green

23879 [1] Bignoniaceae *Bignonia capreolata* L.

det. R. Carter

common vine

Richard Carter with Frankie Snow

31.95582N/82.69142W

1.95 airmi NNW (339.02°) of Lumber City jct. Hwy GA 19 and Hwy US 23/341, Alligator Creek Wildlife Management Area

--steep sandy bluff along N bank of Little Ocmulgee River, actively eroding loose sand with sparse vegetation

23880 [2] Caryophyllaceae *Paronychia rugelii* (Chapman) Shuttleworth ex Chapman

det. R. Carter

locally common on loose exposed sand

--recently exposed moist sand along river bank at base of steep sandy bluff along N bank of Little Ocmulgee River

23881 [1] Cyperaceae *Cyperus polystachyos* Rottb. var. *texensis* (Torrey) Fernald

det. R. Carter

occasional

Richard Carter with Frankie Snow

31.96013N/82.6825W

2.13 airmi NNW (355.20°) of Lumber City jct. Hwy GA 19 and Hwy US 23/341, Alligator Creek Wildlife Management Area

--ecotone between sandridge and head of drain

23882 [1] Asteraceae *Elephantopus elatus* Bertolini

det. R. Carter
occasional

23883 [1] Euphorbiaceae *Euphorbia exserta* (Small) Coker

det. R. Carter
occasional

9/1/2019

Richard Carter with Frankie Snow

U.S.A. Georgia: Wheeler County

31.95153N/82.65538W

2.08 airmi NNE (42.64°) of Lumber City jct. Hwy GA 19 and Hwy US 23/341, Alligator Creek Wildlife Management Area, ca. 35 m W of jct. Hwy GA 19 and Livingston Rd, S of Livingston Rd

--degraded sandy flatwoods hammock

with *Quercus hemisphaerica*, *Q. incana*, *Vaccinium arboreum*, *Morella cerifera*, *Crataegus*, *Vitis*

23884 [1] Smilacaceae *Smilax pumila* Walter

det. R. Carter

prostrate vine, locally common

23885 [3] Fagaceae *Quercus hemisphaerica* Bartram ex Willdenow

det. R. Carter

tree, ca. 3 m tall, common

23886 [2] Commelinaceae *Commelina erecta* L. var. *angustifolia* (Michaux) Fernald

det. R. Carter

plants occasional, stems prostrate, 2 larger petals blue

Richard Carter with Frankie Snow

31.95302N/82.65639W

2.12 airmi NNE (39.53°) of Lumber City jct. Hwy GA 19 and Hwy US 23/341, Alligator Creek Wildlife Management Area, ca. 250 m W of jct. Hwy GA 19 and Bells Ferry Rd, along Livingston Rd

--degraded edge of cypress-gum pond

with *Quercus hemisphaerica*, *Q. incana*, *Vaccinium arboreum*, *Morella cerifera*, *Crataegus*, *Vitis*

23887 [2] Melastomataceae *Rhexia mariana* L. var. *exalbida* Michaux

det. R. Carter

locally common, petals rose-pink

23888 [2] Cyperaceae *Fuirena breviseta* (Coville) Coville

det. R. Carter

plants occasional, cespitose

Richard Carter with Frankie Snow

31.95357N/82.656W

2.16 airmi NNE (39.33°) of Lumber City jct. Hwy GA 19 and Hwy US 23/341, Alligator Creek Wildlife Management Area, ca. 240 m W of jct. Hwy GA 19 and Bells Ferry Rd, along Livingston Rd

--cypress-gum pond

with *Taxodium ascendens*, *Nyssa biflora*, *Persea palustris*, *Acer rubrum*, *Ilex myrtifolia*, *Lyonia lucida*,
Clethra alnifolia, *Vaccinium fuscatum*, *Pinus palustris*, *Smilax laurifolia*, *Carex striata*,
Rhynchospora cephalantha, *Hypericum myrtifolium*, *Sarracenia flava*, *Anchistea virginica*

23889 [3] Hypericaceae *Hypericum myrtifolium* Lamarck

det. R. Carter

plants occasional, petals five, yellow

23890 [1] Sarraceniaceae *Sarracenia flava* L.

det. R. Carter

infrequent, margin of pond

Richard Carter with Frankie Snow

31.96415N/82.67989W

2.40 airmi N (359.38°) of Lumber City jct. Hwy GA 19 and Hwy US 23/341, Alligator Creek Wildlife
Management Area

--disturbed moist sandy slope along bayhead

with *Magnolia virginiana*, *Persea palustris*

23891 [2] Eriocaulaceae *Lachnocaulon anceps* (Walter) Morong

det. R. Carter

locally common, caespitose

--sandy bottom and slope of ditch along bayhead

with *Magnolia virginiana*, *Persea palustris*

23892 [2] Apiaceae *Centella asiatica* (L.) Urban

det. R. Carter

plants locally common in moist sand

Richard Carter with Frankie Snow

31.95779N/82.69448W

2.15 airmi NNW (335.85°) of Lumber City jct. Hwy GA 19 and Hwy US 23/341, Alligator Creek Wildlife
Management Area

--open, narrow swale in floodplain of Little Ocmulgee River

with *Quercus nigra*, *Q. laurifolia*, *Liquidambar styraciflua*, *Acer rubrum*, *Cyrilla racemiflora*, *Vaccinium
elliottii*, *Erianthus*

23893 [3] Smilacaceae *Smilax glauca* Walter

det. R. Carter

vine, common, adaxial leaf surface glaucous

Richard Carter with Frankie Snow

31.95752N/82.69515W

2.15 airmi NNW (334.68°) of Lumber City jct. Hwy GA 19 and Hwy US 23/341, Alligator Creek Wildlife
Management Area

--low bluff along main channel of Little Ocmulgee River, incised first terrace, sandy loam

with *Quercus nigra*, *Q. laurifolia*, *Liquidambar styraciflua*, *Diospyros virginiana*, *Serenoa repens*,
Vaccinium arboreum, *V. elliotii*, *Ditrysinia*, *Hypericum hypericoides*, *Campsis radicans*,
Dyschoriste humistrata, *Dichantheium*, *Scleria triglomerata*, *Lobelia flaccidifolia*

23894 [2] Asteraceae *Eupatorium glaucescens* Elliott [*Eupatorium cuneifolium* Willdenow]
det. R. Carter
occasional

23895 [2] Lamiaceae *Scutellaria arenicola* Small
det. R. Carter
locally common

23896 [2] Poaceae *Agrostis perennans* (Walter) Tuckerman
det. R. Carter
occasional

23897 [2] Rubiaceae *Cephalanthus occidentalis* L.
det. R. Carter
shrub, ca. 4 m tall with arching crown, streambank

23898 [2] Asteraceae *Pluchea camphorata* (L.) A.P. de Candolle
det. R. Carter
plants with a pungent, unpleasant odor, occasional, heads pink

Richard Carter with Frankie Snow

31.95673N/82.69471W

2.09 airmi NNW (334.68°) of Lumber City jct. Hwy GA 19 and Hwy US 23/341, Alligator Creek Wildlife
Management Area

--open terrace along Little Ocmulgee River, sandy loam

23899 [1] Solanaceae *Solanum americanum* P. Miller
det. R. Carter
plants infrequent, corolla white, berries shiny black

23900 [2] Cyperaceae *Cyperus entrerianus* Boeckeler
det. R. Carter
plants locally common, otherwise infrequent

23901 [1] Solanaceae *Solanum carolinense* L. var. *carolinense*
det. R. Carter
plants locally common

23902 [3] Asteraceae *Solidago leavenworthii* Torrey & A. Gray
det. R. Carter
plants occasional, slender rhizomes present, heads yellow

23903 [3] Fabaceae *Lespedeza cuneata* (Dumont-Cours.) G. Don
det. R. Carter
plants common

23904 [1] Convolvulaceae *Ipomoea triloba* L.
det. R. Carter
plant infrequent, stems trailing on sandbar, corolla lavender

Richard Carter with Frankie Snow

31.95672N/82.69338W

2.05 airmi NNW (336.62°) of Lumber City jct. Hwy GA 19 and Hwy US 23/341, Alligator Creek Wildlife Management Area

--low bluff along bank of Little Ocmulgee River, moist sandy loam, ±shaded

23905 [4] Smilacaceae *Smilax rotundifolia* L.

det. R. Carter
vine, occasional

23906 [1] Phyllanthaceae *Phyllanthus caroliniensis* Walter subsp. *caroliniensis*

det. R. Carter
infrequent

23907 [1] Urticaceae *Boehmeria cylindrica* (L.) Swartz

det. R. Carter
occasional

23908 [1] Polygonaceae *Persicaria hydropiperoides* (Michaux) Small [*Polygonum hydropiperoides* Michaux]

det. R. Carter
occasional

--moist sand of sandbar along Little Ocmulgee River

23909 [1] Onagraceae *Ludwigia palustris* (L.) Elliott

det. R. Carter
stems prostrate, plants occasional

--low bluff along bank of Little Ocmulgee River, moist sandy loam, ±shaded

23910 [1] Solanaceae *Physalis angulata* L. var. *angulata*

det. R. Carter
occasional

23911 [1] Rubiaceae *Diodia virginiana* L.

det. R. Carter
occasional

23912 [4] Poaceae *Paspalum boscianum* Flügge

det. R. Carter
common, stems ±flaccid

23913 [2] Poaceae *Axonopus furcatus* (Flügge) A.S. Hitchcock

det. R. Carter

infrequent

23914 [1] Euphorbiaceae *Euphorbia hyssopifolia* L.

Nascent leaves and young stems with sparse long hairs; seeds 1.1 mm long, sides with 2-3 low ridges

det. R. Carter

infrequent

23915 [1] Cyperaceae *Cyperus erythrorhizos* Mühlenberg

det. R. Carter

locally common

Richard Carter with Frankie Snow

31.95766N/82.69285W

2.10 airmi NNW (338.11°) of Lumber City jct. Hwy GA 19 and Hwy US 23/341, Alligator Creek Wildlife Management Area

--open sandy terrace along northern edge of Little Ocmulgee River floodplain, jeep jeep trail

23916 [2] Asteraceae *Eupatorium glaucescens* Elliott [*Eupatorium cuneifolium* Willdenow]

det. R. Carter

Richard Carter with Frankie Snow

31.96503N/82.68177W

2.46 airmi N (356.82°) of Lumber City jct. Hwy GA 19 and Hwy US 23/341, Alligator Creek Wildlife Management Area

--sandy roadside, edge of disturbed flatwoods

23917 [3] Asteraceae *Conyza canadensis* (L.) Cronquist var. *pusilla* (Nuttall) Cronquist

det. R. Carter

common, heads white

23918 [1] Fabaceae *Kummerowia striata* (Thunberg) Schindler

det. R. Carter

infrequent

Richard Carter with Frankie Snow

31.96663N/82.68455W

2.59 airmi NNW (353.37°) of Lumber City jct. Hwy GA 19 and Hwy US 23/341, Alligator Creek Wildlife Management Area

--open pond dominated by graminoids

23919 [1] Poaceae *Aristida virgata* Trinius [*Aristida purpurascens* Poir. var. *virgata* (Trinius) Allred]

det. R. Carter

locally common

23920 [1] Polygalaceae *Polygala ramosa* Elliott

det. R. Carter

plants occasional, roots aromatic, flowers yellow

Richard Carter with Frankie Snow

31.96595N/82.68478W

2.54 airmi NNW (352.95°) of Lumber City jct. Hwy GA 19 and Hwy US 23/341, Alligator Creek Wildlife Management Area

--open pond dominated by graminoids

23921 [1] Poaceae *Paspalum setaceum* Michaux var. *setaceum*

det. R. Carter

common along upper edge of depression

23922 [2] Poaceae *Tridens ambiguus* (Elliott) J.A. Schultes

det. R. Carter

common along upper edge of depression, spikelets purple-tinted

Richard Carter with Frankie Snow

31.97108N/82.70031W

3.13 airmi NNW (337.02°) of Lumber City jct. Hwy GA 19 and Hwy US 23/341, Alligator Creek Wildlife Management Area, vic. proposed canoe launch

--sandy stream terrace along base of sand ridge

23923 [1] Poaceae *Sporobolus curtisii* Small ex Kearney

det. R. Carter

occasional

Richard Carter with Frankie Snow

31.97092N/82.70062W

3.12 airmi NNW (336.61°) of Lumber City jct. Hwy GA 19 and Hwy US 23/341, Alligator Creek Wildlife Management Area, vic. proposed canoe launch; bank of Little Ocmulgee River just below confluence with Alligator Creek

--moist sandy stream bank, in shade

23924 [1] Urticaceae *Boehmeria cylindrica* (L.) Swartz

det. R. Carter

occasional

23925 [1] Onagraceae *Ludwigia leptocarpa* (Nuttall) Hara

det. R. Carter

occasional, petals yellow

23926 [1] Onagraceae *Ludwigia decurrens* Walter

det. R. Carter

occasional, petals yellow

23927 [1] Loganiaceae *Mitreola petiolata* (J.F. Gmelin) Torrey & A. Gray

det. R. Carter

occasional, petals white

--moist sandy stream bank

23928 [1] Fagaceae *Quercus laurifolia* Michaux
det. R. Carter
large tree, specimen found on the ground beneath tree

Richard Carter with Frankie Snow

31.97703N/82.67364W

3.30 airmi N (5.90°) of Lumber City jct. Hwy GA 19 and Hwy US 23/341, Alligator Creek Wildlife
Management Area

--degraded mesic mixed pine-hardwood slope along drain

23929 [1] Pinaceae *Pinus glabra* Walter

det. R. Carter

occasional tree, ca. 6 m tall, needles dark green, no seed cones evident

Richard Carter with Frankie Snow

31.97188N/82.66647W

3.03 airmi NNE (14.50°) of Lumber City jct. Hwy GA 19 and Hwy US 23/341, Alligator Creek Wildlife
Management Area

--degraded sandy flatwoods, formerly longleaf pine-wiregrass

23930 [8] Poaceae *Triplasis americana* P. Beauvoir

det. R. Carter

occasional in disturbed sand, cespitose

23931 [1] Poaceae *Aristida purpurascens* Poiret

Glaucous bluish green form

det. R. Carter

occasional in disturbed sand, cespitose, plant glaucous bluish green

Richard Carter with Frankie Snow

31.96426N/82.65474W

2.81 airmi NNE (30.98°) of Lumber City jct. Hwy GA 19 and Hwy US 23/341, Alligator Creek Wildlife
Management Area

--open seepage slope, most sand

with *Magnolia virginiana*, *Nyssa biflora*, *Persea palustris*, *Cliftonia*, *Pinus serotina*, *P. palustris*, *Vaccinium
fuscatum*, *V. myrsinites*, *Gaylussacia tomentosa*, *Ilex glabra*, *Eubotrys racemosa*, *Hypericum
stans*, *Lycopodiella*, *Sphagnum*

23932 [1] Asteraceae *Eupatorium pilosum* Walter

det. R. Carter

occasional, heads white

23933 [2] Asteraceae *Eupatorium leucolepis* (A.P. de Candolle) Torrey & A. Gray

det. R. Carter

occasional, heads white

23934 [1] Eriocaulaceae *Eriocaulon decangulare* L. var. *decangulare*

det. R. Carter

occasional, cespitose, heads dingy white

23935 [3] Lycopodiaceae *Lycopodiella alopecuroides* (L.) Cranfill [*Lycopodium alopecuroides* L.]
det. R. Carter
locally common, horizontal stems arching up and rooting at tips

23936 [3] Lycopodiaceae *Lycopodiella appressa* (Chapman) Cranfill [*Lycopodium appressum* (Chapman)
Lloyd & Underwood]
det. R. Carter
locally common, horizontal rooting at regular intervals

23937 [1] Lycopodiaceae *Pseudolycopodiella caroliniana* (L.) Holub [*Lycopodium caroliniana* L.]
det. R. Carter
locally common

23938 [1] Droseraceae *Drosera capillaris* Poiret
det. R. Carter
locally common

Richard Carter with Frankie Snow

31.95682N/0.0W

0.27 mi N of jct. Hwy GA 19 and Bells Ferry Rd, along east side of Hwy GA 19, Alligator Creek Wildlife
Management Area
--edge of open graminoid dominated seasonally wet depression and adjacent road ditch, moist sandy
loam

23939 [3] Phyllanthaceae *Phyllanthus urinaria* L. subsp. *urinaria*
det. R. Carter
common

23940 [1] Onagraceae *Ludwigia alternifolia* L.
det. R. Carter
occasional

23941 [1] Euphorbiaceae *Croton glandulosus* L. var. *septentrionalis* Müller of Aargau
det. R. Carter
occasional

23942 [1] Portulacaceae *Portulaca amilis* Spegazzini
det. R. Carter
occasional

23943 [1] Loganiaceae *Mitreola petiolata* (J.F. Gmelin) Torrey & A. Gray
det. R. Carter
occasional, corolla white

23944 [4] Onagraceae *Ludwigia decurrens* Walter
det. R. Carter

common

23945 [1] Euphorbiaceae *Euphorbia hyssopifolia* L.
det. R. Carter
occasional

23946 [1] Plantaginaceae *Gratiola ramosa* Walter
det. R. Carter
locally abundant

23947 [1] Haemodoraceae *Lachnanthes caroliniana* (Lamarck) Dandy
det. R. Carter
locally common

23948 [1] Cyperaceae *Lipocarpa microcephala* (R. Brown) Kunth [*Cyperus leptocarpus* (F. Mueller)
Bauters]
det. R. Carter
occasional

23949 [1] Cyperaceae *Bulbostylis barbata* (Rottbøll) C.B. Clarke
det. R. Carter
occasional

23950 [3] Cyperaceae *Rhynchospora nitens* (Vahl) A. Gray [*Psilocarya nitens* (Vahl) A. Wood]
det. R. Carter
locally abundant

23951 [4] Eriocaulaceae *Eriocaulon decangulare* L. var. *decangulare*
det. R. Carter
locally common, caespitose, heads dingy white

Appendix B. GA DNR-WRD Special Plant Survey Form Data for Rare Plant Taxa Observed at Alligator Creek Wildlife Management Area, Wheeler County, Georgia

Element name: ***Marshallia ramosa* 01**

Site name: Alligator Creek Wildlife Management Area

Survey date(s): 3 July 2018, 7 June 2019

Surveyor(s): Frankie Snow, Richard Carter

Quad name: Lumber City

State: Georgia

County: Wheeler

GPS coordinates: 31.971333, -82.700334

Datum (NAD 1983 preferred):

Site description: Vicinity of proposed canoe launch, near confluence of Alligator Creek and Little Ocmulgee River; 3.14 airmi NNW (337.15°) of Lumber City jct. Hwy GA 19 and Hwy US 23/341

Additional GPS data: NA

Biology

2018 observations

Phenology: in leaf, in fruit

Population size: two plants

Population area: 10–100 m²

Age structure: 100% mature

Vigor: normal

2019 observations

Phenology: one in flower

Population size: three plants

Population area: 10–100 m²

Age structure: 100% mature

Vigor: normal

Comments on above, general description of the character of the occurrence (e.g. stem density, dispersion in space): Only two plants were observed in 2018 and three plants in 2019; observations were made well beyond anthesis when search conditions are optimal; survey should be conducted at the optimal time to better describe this population. Earlier survey by Nature Conservancy personnel reported a larger population than we observed.

Evidence of reproduction: yes, sexual

Describe: plants were observed in fruit

Evidence of symbiotic or parasitic relationship: no

Describe:

Evidence of disease: no

Describe:

Habitat

Aspect: W

Slope: moderate (5-19°)

Light: open to partial

Topo position: lowslope

Moisture regime: moist (mesic) to dry-mesic

Soil texture: soils mapped as Osier and Bibb soils, 0 to 2 percent slopes, frequently flooded [Obs]

Plant community: *Quercus nigra*, *Q. hemisphaerica*, *Liquidambar styraciflua*, *Nyssa sylvatica*, *Pinus palustris*, *Ilex opaca*, *Vaccinium arboreum*, *Diospyros virginiana*, *Cyrilla racemiflora*, *Serenoa repens*, *Asimina angustifolia*, *Dytrisia*, *Chasmanthium laxum*

Element name: ***Marshallia ramosa* 02**

Site name: Alligator Creek Wildlife Management Area

Survey date(s): 7 June 2019

Surveyor(s): Frankie Snow, Richard Carter

Quad name: Lumber City

State: Georgia

County: Wheeler

GPS coordinates: 31.96411, -82.67887

Datum (NAD 1983 preferred):

2.40 airmi N (0.85°) of Lumber City jct. Hwy GA 19 and Hwy US 23/341, Alligator Creek Wildlife Management Area

Additional GPS data: NA

Biology

Phenology: in leaf, 75% in flower

Population size: 30 plants

Population area: 100–200 m²

Age structure: 100% mature

Vigor: normal

Comments on above, general description of the character of the occurrence (e.g. stem density, dispersion in space): Thirty plants were observed in very dry conditions with some flowers withered due to drought.

Evidence of reproduction: yes, sexual

Describe: plants were observed in flower

Evidence of symbiotic or parasitic relationship: no

Describe:

Evidence of disease: no

Describe:

Habitat

Aspect: S

Slope: nearly level (0-5%)

Light: open

Topo position: lower slope

Moisture regime: moist (mesic) to dry-mesic

Soil texture: soils mapped at transition between Ocilla loamy sand and Mascotte sand, both 0 to 2 percent slopes [Oh, Mn]

Plant community: *Quercus laevis*, *Q. margarettae*, *Q. incana*, *Q. hemisphaerica*, *Q. nigra*, *Pinus palustris*, *Vaccinium arboreum*, *V. stamineum caesium*, *V. myrsinites*, *Diospyros*, *Ilex glabra*, *Crataegus*, *Gaylussacia tomentosa*, *Clinopodium coccineum*, *Opuntia mesacantha*, *Stillingia sylvatica*, *Aristida beyrichiana*, *Schizachyrium tenerum*, *Pteridium aquilinum*, *Tephrosia virginiana*, *Solidago odora*, *Eriogonum tomentosum*, *Eupatorium compositifolium*, *Baptisia perfoliata*, *Ionactis linariifolia*,

Gymnopogon

Voucher: *Carter 23731* (VSC)

Element name: ***Muscadinia rotundifolia* var. *munsoniana*_03**

Site name: Alligator Creek Wildlife Management Area

Survey date(s): 18 August 2019

Surveyor(s): Frankie Snow, Richard Carter

Quad name: Lumber City

State: Georgia

County: Wheeler

GPS coordinates: 31.96170, -82.6630

Datum (NAD 1983 preferred):

Site description: 2.43 airmi NNE (23.35°) of Lumber City jct. Hwy GA 19 and Hwy US 23/341, Alligator Creek Wildlife Management Area

Additional GPS data: NA

Biology

Phenology: in leaf, in fruit

Population size: 1-10 plants

Population area: 5–10 m²

Age structure: 100% mature

Vigor: normal

Comments on above, general description of the character of the occurrence (e.g. stem density, dispersion in space): Because of the scandent habit, it was not possible to determine with a high degree of confidence how many individual plants were present.

Evidence of reproduction: yes, sexual

Describe: Fruits were present, with well-developed seeds.

Evidence of symbiotic or parasitic relationship: no

Describe:

Evidence of disease: no

Describe:

Habitat

Aspect: ±flat

Slope: gentle (0-4°)

Light: open

Topo position: lower slope

Moisture regime: dry (xeric)

Soil texture: dark gray sandy loam, mapped at transition between Lakeland and Troup soils (0 to 8 percent slopes) and Mascotte sand (0 to 2 percent slopes) [LTC, Mn]

Plant community: degraded mesic flatwoods

Voucher: *Carter 23865* (VSC)

Element name: ***Penstemon dissectus***

Site name: Alligator Creek Wildlife Management Area

Survey date(s): 3 July 2018; 11 May 2019

Surveyor(s): Frankie Snow, Richard Carter

Quad name: Lumber City

State: Georgia

County: Wheeler

GPS coordinates: 31.971333, -82.700334

Datum (NAD 1983 preferred):

Site description: Vicinity of proposed canoe launch, near confluence of Alligator Creek and Little Ocmulgee River; 3.14 airmi NNW (337.15°) of Lumber City jct. Hwy GA 19 and Hwy US 23/341

Additional GPS data: NA

Biology

2018 observations

Phenology: in leaf, in fruit

Population size: ca. 50 plants observed

Population area: ca. 200 m²

Age structure: 80% juvenile, 20% mature

Vigor: normal

2019 observations

Phenology: three in flower

Population size: 200 plants flagged

Population area: ca. 200 m²

Age structure: 80% juvenile, 20% mature

Vigor: vigorous post burn

Comments on above, general description of the character of the occurrence (e.g. stem density, dispersion in space): Observations were made well beyond anthesis when search conditions were less than optimal; survey should be conducted during anthesis to better describe this population.

Evidence of reproduction: yes, sexual

Describe: some plants were observed in fruit

Evidence of symbiotic or parasitic relationship: no

Describe:

Evidence of disease: no

Describe:

Habitat

Aspect: W

Slope: moderate (5-19°)

Light: open to partial

Topo position: lowslope

Moisture regime: moist (mesic) to dry-mesic

Soil texture: soils mapped as Osier and Bibb soils, 0 to 2 percent slopes, frequently flooded [Obs]

Plant community: *Quercus nigra*, *Q. hemisphaerica*, *Liquidambar styraciflua*, *Nyssa sylvatica*, *Pinus palustris*, *Ilex opaca*, *Vaccinium arboreum*, *Diospyros virginiana*, *Cyrilla racemiflora*, *Serenoa repens*, *Asimina angustifolia*, *Dytrisia*, *Chasmanthium laxum*

Voucher: Carter 23693 (VSC)

Element name: *Rhynchospora harperi*

Site name: Alligator Creek Wildlife Management Area

Survey date(s): 18 August 2019

Surveyor(s): Frankie Snow, Richard Carter

Quad name: Lumber City

State: Georgia

County: Wheeler

GPS coordinates: 31.95702, -82.66019

Datum (NAD 1983 preferred):

Site description: 2.22 airmi NNE (30.57°) of Lumber City jct. Hwy GA 19 and Hwy US 23/341, Alligator Creek Wildlife Management Area, Big Pond

Additional GPS data:

31.95811, -82.66143

Biology

Phenology: in leaf, in fruit

Population size: 10–30 plants observed

Population area: 1.5 hectare

Age structure: 100% mature

Vigor: normal

Comments on above, general description of the character of the occurrence (e.g. stem density, dispersion in space): Observations were made well beyond anthesis when search conditions were less than optimal; survey should be conducted during anthesis to better describe this population.

Evidence of reproduction: yes, sexual

Describe: plants were observed in fruit

Evidence of symbiotic or parasitic relationship: no

Describe:

Evidence of disease: no

Describe:

Habitat

Aspect: flat

Slope: flat (0%)

Light: open to partial

Topo position: low (terrace)

Moisture regime: seasonally inundated, although when the EO was observed the pond was dry except for the deepest parts

Soil texture: soil mapped as Pelham loamy sand [PI]

Plant community: drawn down blackwater cypress gum pond "Big Pond"; *Taxodium ascendens*, *Nyssa biflora*, *Acer rubrum*, *Persea palustris*, *Litsea aestivalis*, *Ilex myrtifolia*, *Lyonia lucida*, *Eubotrys racemosa*, *Smilax laurifolia*, *Pieris phillyreifolia*, *Carex glaucescens*, *C. striata*, *Dulichium arundinaceum*, *Xyris fimbriata*, *Scirpus cyperinus*, *Rhynchospora cephalantha*, *R. filiformis*, *R. harperi*, *Scleria muehlenbergia*, *Juncus repens*, *Ludwigia pilosa*, *Proserpinaca pectinata*, *Anchistea virginica*

Voucher: Carter 23846 (VSC)

**Appendix C. Vouchered Checklist of Flora of Alligator Creek Wildlife Management Area,
Wheeler County, Georgia
9/1/2019**

Family	Genus	Species	Subsp	Var					
Acanthaceae	<i>Dyschoriste</i>	<i>humistrata</i>			23772				
Adoxaceae	<i>Viburnum</i>	<i>obovatum</i>			23371				
Alismataceae	<i>Helanthis</i>	<i>tenellum</i>			22746				
Altingiaceae	<i>Liquidambar</i>	<i>styraciflua</i>			23737				
Amaranthaceae	<i>Froelichia</i>	<i>floridana</i>			23761				
Anacardiaceae	<i>Rhus</i>	<i>copallinum</i>		<i>copallinum</i>	23260				
Anacardiaceae	<i>Toxicodendron</i>	<i>pubescens</i>			23234				
Annonaceae	<i>Asimina</i>	<i>angustifolia</i>			23728				
Annonaceae	<i>Asimina</i>	<i>parviflora</i>			23193				
Apiaceae	<i>Centella</i>	<i>asiatica</i>			23892				
Apiaceae	<i>Eryngium</i>	<i>yuccifolium</i>			23864				
Apocynaceae	<i>Asclepias</i>	<i>cinerea</i>			22740				
Apocynaceae	<i>Asclepias</i>	<i>humistrata</i>			23832				
Apocynaceae	<i>Asclepias</i>	<i>tuberosa</i>		<i>tuberosa</i>	23783				
Apocynaceae	<i>Asclepias</i>	<i>verticillata</i>			23203	23349			
Aquifoliaceae	<i>Ilex</i>	<i>ambigua</i>			23299				
Aquifoliaceae	<i>Ilex</i>	<i>coriacea</i>			23228	23301	23714		
Aquifoliaceae	<i>Ilex</i>	<i>decidua</i>		<i>decidua</i>	23374	23472	23585	23815	23816
Aquifoliaceae	<i>Ilex</i>	<i>glabra</i>			22730	22941	23220	23674	
Aquifoliaceae	<i>Ilex</i>	<i>myrtifolia</i>			22949	23677			
Aquifoliaceae	<i>Ilex</i>	<i>opaca</i>			23776				
Araliaceae	<i>Aralia</i>	<i>spinosa</i>			23323				
Araliaceae	<i>Hydrocotyle</i>	<i>verticillata</i>			23297				
Arecaceae	<i>Sabal</i>	<i>minor</i>			23814				
Arecaceae	<i>Serenoa</i>	<i>repens</i>			22935	23210	23723		
Asteraceae	<i>Balduina</i>	<i>angustifolia</i>			22717	23401			
Asteraceae	<i>Balduina</i>	<i>uniflora</i>			22741				
Asteraceae	<i>Berlandiera</i>	<i>pumila</i>		<i>pumila</i>	23861				
Asteraceae	<i>Chrysoma</i>	<i>pauciflosculosa</i>			23403				
Asteraceae	<i>Chrysopsis</i>	<i>gossypina</i>			23452				
Asteraceae	<i>Chrysopsis</i>	<i>mariana</i>			23466				
Asteraceae	<i>Cirsium</i>	<i>nuttallii</i>			23733				

Asteraceae	<i>Conyza</i>	<i>canadensis</i>	<i>pusilla</i>	23917		
Asteraceae	<i>Coreopsis</i>	<i>delphinifolia</i>		23763	23198	23730
Asteraceae	<i>Croptilon</i>	<i>divaricatum</i>		23875		
Asteraceae	<i>Eclipta</i>	<i>prostrata</i>		23292		
Asteraceae	<i>Elephantopus</i>	<i>elatus</i>		23882		
Asteraceae	<i>Erechtites</i>	<i>hieraciifolius</i>		23216		
Asteraceae	<i>Erigeron</i>	<i>strigosus</i>	<i>strigosus</i>	23189		
Asteraceae	<i>Eupatorium</i>	<i>glaucescens</i>		23894	23916	
Asteraceae	<i>Eupatorium</i>	<i>hyssopifolium</i>		23326		
Asteraceae	<i>Eupatorium</i>	<i>leucolepis</i>		23933		
Asteraceae	<i>Eupatorium</i>	<i>pilosum</i>		23932		
Asteraceae	<i>Euthamia</i>	<i>caroliniana</i>		23447		
Asteraceae	<i>Gamochaeta</i>	<i>calviceps</i>		23704		
Asteraceae	<i>Helenium</i>	<i>flexuosum</i>		23185	23190	
Asteraceae	<i>Hieracium</i>	<i>gronovii</i>		23347		
Asteraceae	<i>Krigia</i>	<i>virginica</i>		23205	23708	
Asteraceae	<i>Liatrix</i>	<i>elegans</i>	<i>kralii</i>	23441		
Asteraceae	<i>Liatrix</i>	<i>elegantula</i>		23319		
Asteraceae	<i>Liatrix</i>	<i>patens</i>		23459		
Asteraceae	<i>Liatrix</i>	<i>squarrosa</i>		23200		
Asteraceae	<i>Liatrix</i>	<i>tenuifolia</i>		23407		
Asteraceae	<i>Marshallia</i>	<i>ramosa</i>		23731		
Asteraceae	<i>Pityopsis</i>	<i>adenolepis</i>		23445		
Asteraceae	<i>Pityopsis</i>	<i>graminifolia</i>	<i>graminifolia</i>	23769		
Asteraceae	<i>Pluchea</i>	<i>camphorata</i>		23293	23898	
Asteraceae	<i>Pseudognaphalium</i>	<i>obtusifolium</i>		23469		
Asteraceae	<i>Sericocarpus</i>	<i>tortifolius</i>		23463		
Asteraceae	<i>Silphium</i>	<i>compositum</i>	<i>ovatifolium</i>	23782		
Asteraceae	<i>Solidago</i>	<i>kralii</i>		23474		
Asteraceae	<i>Solidago</i>	<i>leavenworthii</i>		23902		
Asteraceae	<i>Solidago</i>	<i>odora</i>		23443		
Asteraceae	<i>Symphyotrichum</i>	<i>concolor</i>	<i>concolor</i>	23457		
Asteraceae	<i>Symphyotrichum</i>	<i>dumosum</i>	<i>dumosum</i>	23456		

Asteraceae	<i>Vernonia</i>	<i>angustifolia</i>	<i>scaberrima</i>	23274	23348		
Betulaceae	<i>Betula</i>	<i>nigra</i>		23817			
Bignoniaceae	<i>Bignonia</i>	<i>capreolata</i>		23879			
Bignoniaceae	<i>Campsis</i>	<i>radicans</i>		23267	23811		
Blechnaceae	<i>Anchistea</i>	<i>virginica</i>		23850			
Blechnaceae	<i>Lorinseria</i>	<i>areolata</i>		23827			
Boraginaceae	<i>Lithospermum</i>	<i>virginianum</i>		23739			
Bromeliaceae	<i>Tillandsia</i>	<i>usneoides</i>		23848			
Burmanniaceae	<i>Apteria</i>	<i>aphylla</i>		23285			
Burmanniaceae	<i>Burmannia</i>	<i>biflora</i>		23290			
Cactaceae	<i>Opuntia</i>	<i>mesacantha</i>	<i>mesacantha</i>	23388	23412	23413	
Campanulaceae	<i>Lobelia</i>	<i>flaccidifolia</i>		23187			
Caryophyllaceae	<i>Paronychia</i>	<i>americana</i>		23346	23390	23581	
Caryophyllaceae	<i>Paronychia</i>	<i>herniarioides</i>		23345			
Caryophyllaceae	<i>Paronychia</i>	<i>rugelii</i>		23880			
Caryophyllaceae	<i>Sabulina</i>	<i>caroliniana</i>		23689			
Caryophyllaceae	<i>Stipulicida</i>	<i>setacea</i>		22718	23179	23223	23691
Chrysobalanaceae	<i>Licania</i>	<i>michauxii</i>		23180	22716	23793	
Cistaceae	<i>Lechea</i>	<i>minor</i>		23320			
Cistaceae	<i>Lechea</i>	<i>mucronata</i>		23858			
Cistaceae	<i>Lechea</i>	<i>torreyi</i>	<i>congesta</i>	23869			
Cleomaceae	<i>Polanisia</i>	<i>tenuifolia</i>		22720	23221		
Clethraceae	<i>Clethra</i>	<i>alnifolia</i>	<i>pubescens</i>	23226			
Commelinaceae	<i>Commelina</i>	<i>erecta</i>	<i>angustifolia</i>	23177	23886		
Commelinaceae	<i>Cuthbertia</i>	<i>graminea</i>		23178			
Convolvulaceae	<i>Ipomoea</i>	<i>pandurata</i>		23757			
Convolvulaceae	<i>Ipomoea</i>	<i>triloba</i>		23904			
Convolvulaceae	<i>Stylisma</i>	<i>angustifolia</i>		23729	23257		
Convolvulaceae	<i>Stylisma</i>	<i>patens</i>		23710	23768		
Convolvulaceae	<i>Stylisma</i>	<i>villosa</i>		23264			
Cornaceae	<i>Nyssa</i>	<i>biflora</i>		22950	23239	23476	
Cornaceae	<i>Nyssa</i>	<i>ogeche</i>		23269			
Cornaceae	<i>Nyssa</i>	<i>sylvatica</i>		23822			

Cupressaceae	<i>Juniperus</i>	<i>virginiana</i>	<i>silicicola</i>	23465					
Cupressaceae	<i>Taxodium</i>	<i>ascendens</i>		23852					
Cupressaceae	<i>Taxodium</i>	<i>distichum</i>		23270					
Cyperaceae	<i>Bulbostylis</i>	<i> barbata</i>		23949					
Cyperaceae	<i>Bulbostylis</i>	<i>ciliatifolia</i>	<i>ciliatifolia</i>	22727	23335	23764			
Cyperaceae	<i>Bulbostylis</i>	<i>coarctata</i>		23208	23411				
Cyperaceae	<i>Bulbostylis</i>	<i>warei</i>		22737	23176	23350			
Cyperaceae	<i>Carex</i>	<i>floridana</i>		23288					
Cyperaceae	<i>Carex</i>	<i>glaucescens</i>		23315	23845				
Cyperaceae	<i>Carex</i>	<i>intumescens</i>		23773					
Cyperaceae	<i>Carex</i>	<i>joorii</i>		23271					
Cyperaceae	<i>Carex</i>	<i>lonchocarpa</i>		23295					
Cyperaceae	<i>Carex</i>	<i>striata</i>	<i>striata</i>	23679					
Cyperaceae	<i>Carex</i>	<i>tenax</i>		23184	23230	23247	23694		
Cyperaceae	<i>Cyperus</i>	<i>compressus</i>		23834					
Cyperaceae	<i>Cyperus</i>	<i>croceus</i>		23172					
Cyperaceae	<i>Cyperus</i>	<i>diminutus</i>		23209	23368	23402			
Cyperaceae	<i>Cyperus</i>	<i>entrerianus</i>		23900					
Cyperaceae	<i>Cyperus</i>	<i>erythrorhizos</i>		23915					
Cyperaceae	<i>Cyperus</i>	<i>grayi</i>		23175	23211	23214	23385	23410	23415
Cyperaceae	<i>Cyperus</i>	<i>hystricinus</i>		23181					
Cyperaceae	<i>Cyperus</i>	<i>lecontei</i>		22722					
Cyperaceae	<i>Cyperus</i>	<i>nashii</i>		23182	23409				
Cyperaceae	<i>Cyperus</i>	<i>plukenetii</i>		23233					
Cyperaceae	<i>Cyperus</i>	<i>polystachyos</i>	<i>texensis</i>	23881					
Cyperaceae	<i>Cyperus</i>	<i>polystachyos</i>		22728					
Cyperaceae	<i>Cyperus</i>	<i>retrorsus</i>		23334					
Cyperaceae	<i>Dulichium</i>	<i>arundinaceum</i>	<i>arundinaceum</i>	23376					
Cyperaceae	<i>Eleocharis</i>	<i>baldwinii</i>		23398					
Cyperaceae	<i>Eleocharis</i>	<i>brittonii</i>		23838					
Cyperaceae	<i>Eleocharis</i>	<i>melanocarpa</i>		23343	23684				
Cyperaceae	<i>Eleocharis</i>	<i>microcarpa</i>		22749					
Cyperaceae	<i>Eleocharis</i>	<i>tricostata</i>		22750					

Cyperaceae	<i>Fimbristylis</i>	<i>autumnalis</i>		23841	23855			
Cyperaceae	<i>Fimbristylis</i>	<i>puberula</i>	<i>puberula</i>	23331				
Cyperaceae	<i>Fuirena</i>	<i>breviseta</i>		23888				
Cyperaceae	<i>Fuirena</i>	<i>squarrosa</i>		22729				
Cyperaceae	<i>Lipocarpa</i>	<i>maculata</i>		23800				
Cyperaceae	<i>Lipocarpa</i>	<i>microcephala</i>		23948				
Cyperaceae	<i>Rhynchospora</i>	<i>cephalantha</i>	<i>cephalantha</i>	23839				
Cyperaceae	<i>Rhynchospora</i>	<i>chalarocephala</i>		22752				
Cyperaceae	<i>Rhynchospora</i>	<i>chapmanii</i>		23397				
Cyperaceae	<i>Rhynchospora</i>	<i>corniculata</i>		23828				
Cyperaceae	<i>Rhynchospora</i>	<i>distans</i>		23215	23246	23355		
Cyperaceae	<i>Rhynchospora</i>	<i>fascicularis</i>		23237	23243			
Cyperaceae	<i>Rhynchospora</i>	<i>filifolia</i>		23843	23844			
Cyperaceae	<i>Rhynchospora</i>	<i>globularis</i>	<i>globularis</i>	23333				
Cyperaceae	<i>Rhynchospora</i>	<i>gracilentata</i>		23789				
Cyperaceae	<i>Rhynchospora</i>	<i>grayi</i>		23183	23703			
Cyperaceae	<i>Rhynchospora</i>	<i>harperi</i>		23846				
Cyperaceae	<i>Rhynchospora</i>	<i>inexpansa</i>		23244				
Cyperaceae	<i>Rhynchospora</i>	<i>leptocarpa</i>		23254	23298	23313	23788	23831
Cyperaceae	<i>Rhynchospora</i>	<i>megalocarpa</i>		23191				
Cyperaceae	<i>Rhynchospora</i>	<i>microcephala</i>		22751	23245			
Cyperaceae	<i>Rhynchospora</i>	<i>nitens</i>		23950				
Cyperaceae	<i>Rhynchospora</i>	<i>sulcata</i>		22742				
Cyperaceae	<i>Scirpus</i>	<i>cyperinus</i>		23747				
Cyperaceae	<i>Scleria</i>	<i>ciliata</i>	<i>ciliata</i>	22943	23718			
Cyperaceae	<i>Scleria</i>	<i>ciliata</i>	<i>glabra</i>	23755				
Cyperaceae	<i>Scleria</i>	<i>georgiana</i>		22753	23686			
Cyperaceae	<i>Scleria</i>	<i>muehlenbergii</i>		23847				
Cyperaceae	<i>Scleria</i>	<i>triglomerata</i>		23321				
Cyrillaceae	<i>Cliftonia</i>	<i>monophylla</i>		22721	23227	23716		
Cyrillaceae	<i>Cyrilla</i>	<i>racemiflora</i>		23225				
Dennstaedtiaceae	<i>Pteridium</i>	<i>latiusculum</i>	<i>pseudocaudatum</i>	23824				
Droseraceae	<i>Drosera</i>	<i>capillaris</i>		22757	23702	23938		

Droseraceae	<i>Drosera</i>	<i>intermedia</i>		22744					
Ebenaceae	<i>Diospyros</i>	<i>virginiana</i>		23675					
Ericaceae	<i>Elliottia</i>	<i>racemosa</i>		23219					
Ericaceae	<i>Eubotrys</i>	<i>racemosa</i>		22937					
Ericaceae	<i>Gaylussacia</i>	<i>dumosa</i>		23229					
Ericaceae	<i>Gaylussacia</i>	<i>tomentosa</i>		22934	23701				
Ericaceae	<i>Kalmia</i>	<i>hirsuta</i>		22739	23240	23363			
Ericaceae	<i>Leucothoe</i>	<i>axillaris</i>		23830					
Ericaceae	<i>Lyonia</i>	<i>ferruginea</i>		22939					
Ericaceae	<i>Lyonia</i>	<i>fruticosa</i>		23249	23354				
Ericaceae	<i>Lyonia</i>	<i>ligustrina</i>	<i>foliosiflora</i>	23727	22936				
Ericaceae	<i>Lyonia</i>	<i>ligustrina</i>	<i>ligustrina</i>	23352					
Ericaceae	<i>Lyonia</i>	<i>lucida</i>		22940	23699				
Ericaceae	<i>Lyonia</i>	<i>mariana</i>		22938	23724				
Ericaceae	<i>Pieris</i>	<i>phillyreifolia</i>		22947	23259	23283	23678	23389	
Ericaceae	<i>Rhododendron</i>	<i>canescens</i>		23284					
Ericaceae	<i>Rhododendron</i>	<i>viscosum</i>	<i>serrulatum</i>	23232	23251				
Ericaceae	<i>Vaccinium</i>	<i>arboreum</i>		22933					
Ericaceae	<i>Vaccinium</i>	<i>corymbosum</i>		23351					
Ericaceae	<i>Vaccinium</i>	<i>fuscatum</i>		22948	23305	23384	23478	23676	23715
Ericaceae	<i>Vaccinium</i>	<i>myrsinites</i>		23851					
Ericaceae	<i>Vaccinium</i>	<i>stamineum</i>	<i>caesium</i>	22731	22942	23174	23248	23700	23719
Ericaceae	<i>Vaccinium</i>	<i>tenellum</i>		23309					
Ericaceae	<i>Vaccinium</i>	<i>virgatum</i>		23300					
Eriocaulaceae	<i>Eriocaulon</i>	<i>decangulare</i>	<i>decangulare</i>	23934	23951				
Eriocaulaceae	<i>Lachnocaulon</i>	<i>anceps</i>		23891					
Eriocaulaceae	<i>Syngonanthus</i>	<i>flavidulus</i>		22755	23241	23356			
Euphorbiaceae	<i>Acalypha</i>	<i>gracilens</i>		23803					
Euphorbiaceae	<i>Cnidioscolus</i>	<i>stimulosus</i>		23796					
Euphorbiaceae	<i>Croton</i>	<i>glandulosus</i>	<i>septentrionalis</i>	23784	23941				
Euphorbiaceae	<i>Croton</i>	<i>michauxii</i>		23322					
Euphorbiaceae	<i>Ditrysinia</i>	<i>fruticosa</i>		23262					
Euphorbiaceae	<i>Euphorbia</i>	<i>discoidalis</i>		23673					

Euphorbiaceae	<i>Euphorbia</i>	<i>exserta</i>		23279	23720	23883
Euphorbiaceae	<i>Euphorbia</i>	<i>hyssopifolia</i>		23914	23945	
Euphorbiaceae	<i>Euphorbia</i>	<i>maculata</i>		23808	23809	
Euphorbiaceae	<i>Euphorbia</i>	<i>pubentissima</i>		23324		
Euphorbiaceae	<i>Phyllanthus</i>	<i>caroliniensis</i>	<i>caroliniensis</i>	23805		
Euphorbiaceae	<i>Stillingia</i>	<i>sylvatica</i>		23725		
Fabaceae	<i>Clitoria</i>	<i>mariana</i>	<i>mariana</i>	23863		
Fabaceae	<i>Galactia</i>	<i>minor</i>		23217	23307	
Fabaceae	<i>Indigofera</i>	<i>caroliniana</i>		23256		
Fabaceae	<i>Kummerowia</i>	<i>striata</i>		23918		
Fabaceae	<i>Lespedeza</i>	<i>cuneata</i>		23903		
Fabaceae	<i>Stylosanthes</i>	<i>biflora</i>		23860		
Fabaceae	<i>Tephrosia</i>	<i>virginiana</i>		23188		
Fagaceae	<i>Castanea</i>	<i>pumila</i>		22931	23473	23726
Fagaceae	<i>Quercus</i>	<i>alba</i>		23813		
Fagaceae	<i>Quercus</i>	<i>elliottii</i>		23372	23373	
Fagaceae	<i>Quercus</i>	<i>hemisphaerica</i>		23885		
Fagaceae	<i>Quercus</i>	<i>laurifolia</i>		23775	23928	
Fagaceae	<i>Quercus</i>	<i>margarettae</i>		23439		
Fagaceae	<i>Quercus</i>	<i>marilandica</i>	<i>marilandica</i>	23454		
Fagaceae	<i>Quercus</i>	<i>michauxii</i>		23812		
Fagaceae	<i>Quercus</i>	<i>nigra</i>		23872		
Gelsemiaceae	<i>Gelsemium</i>	<i>sempervirens</i>		23462		
Gentianaceae	<i>Bartonia</i>	<i>paniculata</i>		23289		
Gentianaceae	<i>Sabatia</i>	<i>brevifolia</i>		23364		
Haemodoraceae	<i>Lachnanthes</i>	<i>caroliniana</i>		23947		
Haloragaceae	<i>Proserpinaca</i>	<i>pectinata</i>		23840		
Hamamelidaceae	<i>Hamamelis</i>	<i>virginiana</i>	<i>henryae</i>	23194	23588	
Hypericaceae	<i>Hypericum</i>	<i>cistifolium</i>		23867		
Hypericaceae	<i>Hypericum</i>	<i>galioides</i>		23201	23235	23760 23791
Hypericaceae	<i>Hypericum</i>	<i>gentianoides</i>		22736	23339	
Hypericaceae	<i>Hypericum</i>	<i>hypericoides</i>		23338		
Hypericaceae	<i>Hypericum</i>	<i>mutilum</i>	<i>mutilum</i>	23294		

Hypericaceae	<i>Hypericum</i>	<i>myrtifolium</i>								23889
Hypericaceae	<i>Hypericum</i>	<i>tetrapetalum</i>								23743
Hypoxidaceae	<i>Hypoxis</i>	<i>juncea</i>								23367
Iridaceae	<i>Iris</i>	<i>verna</i>	<i>verna</i>							23444
Iteaceae	<i>Itea</i>	<i>virginica</i>								23296
Juglandaceae	<i>Carya</i>	<i>glabra</i>								23197
Juglandaceae	<i>Carya</i>	<i>pallida</i>								23196 23721
Juglandaceae	<i>Carya</i>	<i>tomentosa</i>								23362 23438
Juncaceae	<i>Juncus</i>	<i>biflorus</i>								23238
Juncaceae	<i>Juncus</i>	<i>marginatus</i>								22734
Juncaceae	<i>Juncus</i>	<i>repens</i>								23746
Juncaceae	<i>Juncus</i>	<i>scirpoidea</i>	<i>compositus</i>							23366
Juncaceae	<i>Juncus</i>	<i>scirpoides</i>								22723
Krameriaceae	<i>Krameria</i>	<i>lanceolata</i>								23692
Lamiaceae	<i>Callicarpa</i>	<i>americana</i>								23781
Lamiaceae	<i>Clinopodium</i>	<i>coccineum</i>								23408
Lamiaceae	<i>Dicerandra</i>	<i>linearifolia</i>	<i>linearifolia</i>							23453
Lamiaceae	<i>Pycnanthemum</i>	<i>muticum</i>								23310
Lamiaceae	<i>Salvia</i>	<i>azurea</i>	<i>azurea</i>							23450
Lamiaceae	<i>Scutellaria</i>	<i>arenicola</i>								23895
Lamiaceae	<i>Trichostema</i>	<i>dichotomum</i>								23337
Lauraceae	<i>Litsea</i>	<i>aestivalis</i>								22946 23377
Lauraceae	<i>Persea</i>	<i>borbonia</i>								23306
Lauraceae	<i>Persea</i>	<i>palustris</i>								23213 23353 23399 23475 23477 23859
Lauraceae	<i>Sassafras</i>	<i>albidum</i>								23873
Lentibulariaceae	<i>Utricularia</i>	<i>biflora</i>								23483
Lentibulariaceae	<i>Utricularia</i>	<i>cornuta</i>								22747
Lentibulariaceae	<i>Utricularia</i>	<i>juncea</i>								22758 23787
Linderniaceae	<i>Lindernia</i>	<i>dubia</i>	<i>anagallidea</i>							23770
Linderniaceae	<i>Lindernia</i>	<i>dubia</i>	<i>dubia</i>							23771
Linderniaceae	<i>Micranthemum</i>	<i>umbrosum</i>								23807
Loganiaceae	<i>Mitreola</i>	<i>petiolata</i>								23927 23943
Lycopodiaceae	<i>Lycopodiella</i>	<i>aloppecuroides</i>								23584 23935

Lycopodiaceae	<i>Lycopodiella</i>	<i>appressa</i>		23582	23936
Lycopodiaceae	<i>Pseudolycopodiella</i>	<i>caroliniana</i>		23583	23937
Lythraceae	<i>Rotala</i>	<i>ramosior</i>		22748	23802
Magnoliaceae	<i>Liriodendron</i>	<i>tulipifera</i>		23786	
Magnoliaceae	<i>Magnolia</i>	<i>grandiflora</i>		23311	
Magnoliaceae	<i>Magnolia</i>	<i>virginiana</i>	<i>australis</i>	23467	
Malvaceae	<i>Hibiscus</i>	<i>aculeatus</i>		23756	
Mayacaceae	<i>Mayaca</i>	<i>fluviatilis</i>		23252	
Melastomataceae	<i>Rhexia</i>	<i>alifanus</i>		23752	23753
Melastomataceae	<i>Rhexia</i>	<i>mariana</i>	<i>exalbida</i>	23342	23887
Melastomataceae	<i>Rhexia</i>	<i>nashii</i>		23314	
Melastomataceae	<i>Rhexia</i>	<i>petiolata</i>		23242	
Melastomataceae	<i>Rhexia</i>	<i>virginica</i>		23741	23849
Menispermaceae	<i>Cocculus</i>	<i>carolinus</i>		23779	
Molluginaceae	<i>Mollugo</i>	<i>verticillata</i>		23765	
Myricaceae	<i>Morella</i>	<i>caroliniensis</i>		23302	
Myricaceae	<i>Morella</i>	<i>cerifera</i>		23327	23458
Myricaceae	<i>Morella</i>	<i>pumila</i>		23400	23717
Oleaceae	<i>Cartrema</i>	<i>americanum</i>		22932	23212 23414
Oleaceae	<i>Chionanthus</i>	<i>virginicus</i>		23276	
Onagraceae	<i>Ludwigia</i>	<i>alternifolia</i>		23940	
Onagraceae	<i>Ludwigia</i>	<i>decurrens</i>		23926	23944
Onagraceae	<i>Ludwigia</i>	<i>glandulosa</i>		23767	
Onagraceae	<i>Ludwigia</i>	<i>leptocarpa</i>		23925	
Onagraceae	<i>Ludwigia</i>	<i>linearis</i>		23742	
Onagraceae	<i>Ludwigia</i>	<i>palustris</i>		23806	23909
Onagraceae	<i>Ludwigia</i>	<i>pilosa</i>		23833	
Onagraceae	<i>Ludwigia</i>	<i>suffruticosa</i>		22726	
Onagraceae	<i>Ludwigia</i>	<i>virgata</i>		23754	
Orchidaceae	<i>Platanthera</i>	<i>clavellata</i>		23291	
Orchidaceae	<i>Platanthera</i>	<i>cristata</i>		23316	
Orobanchaceae	<i>Agalinis</i>	<i>fasciculata</i>		23446	
Orobanchaceae	<i>Agalinis</i>	<i>plukenetii</i>		23455	

Orobanchaceae	<i>Agalinis</i>	<i>tenella</i>		23468	23580
Orobanchaceae	<i>Aureolaria</i>	<i>pectinata</i>		23460	
Orobanchaceae	<i>Seymeria</i>	<i>pectinata</i>		22719	
Osmundaceae	<i>Osmunda</i>	<i>spectabilis</i>		23829	
Osmundaceae	<i>Osmundastrum</i>	<i>cinnamomeum</i>		23825	
Passifloraceae	<i>Passiflora</i>	<i>incarnata</i>		23795	
Phyllanthaceae	<i>Phyllanthus</i>	<i>caroliniensis</i>	<i>caroliniensis</i>	23906	
Phyllanthaceae	<i>Phyllanthus</i>	<i>urinaria</i>	<i>urinaria</i>	23939	
Pinaceae	<i>Pinus</i>	<i>elliottii</i>		23856	
Pinaceae	<i>Pinus</i>	<i>glabra</i>		23929	
Pinaceae	<i>Pinus</i>	<i>palustris</i>		23261	23278
Pinaceae	<i>Pinus</i>	<i>serotina</i>		23222	
Pinaceae	<i>Pinus</i>	<i>taeda</i>		23751	
Plantaginaceae	<i>Gratiola</i>	<i>ramosa</i>		23946	
Plantaginaceae	<i>Mecardonia</i>	<i>acuminata</i>	<i>acuminata</i>	23312	
Plantaginaceae	<i>Penstemon</i>	<i>dissectus</i>		23693	
Plantaginaceae	<i>Plantago</i>	<i>aristata</i>		23204	
Plantaginaceae	<i>Sophronanthe</i>	<i>hispida</i>		23341	23711
Plantaginaceae	<i>Sophronanthe</i>	<i>pilosa</i>		23745	
Poaceae	<i>Agrostis</i>	<i>hyemalis</i>		23712	
Poaceae	<i>Agrostis</i>	<i>perennans</i>		23896	
Poaceae	<i>Andropogon</i>	<i>ternarius</i>		23464	
Poaceae	<i>Andropogon</i>	<i>virginicus</i>	<i>virginicus</i>	23451	
Poaceae	<i>Anthaenantia</i>	<i>villosa</i>		23375	
Poaceae	<i>Aristida</i>	<i>beyrichiana</i>		23344	23471
Poaceae	<i>Aristida</i>	<i>condensata</i>		23406	
Poaceae	<i>Aristida</i>	<i>longispica</i>		23449	
Poaceae	<i>Aristida</i>	<i>palustris</i>		22743	
Poaceae	<i>Aristida</i>	<i>purpurascens</i>		23394	23448 23931
Poaceae	<i>Aristida</i>	<i>spiciformis</i>		23365	
Poaceae	<i>Aristida</i>	<i>tuberculosa</i>		22735	
Poaceae	<i>Aristida</i>	<i>virgata</i>		23919	
Poaceae	<i>Arundinaria</i>	<i>tecta</i>		23231	

Poaceae	<i>Axonopus</i>	<i>furcatus</i>						23913
Poaceae	<i>Chasmanthium</i>	<i>laxum</i>						23317
Poaceae	<i>Chasmanthium</i>	<i>sessiliflorum</i>		<i>sessiliflorum</i>				23797
Poaceae	<i>Coleataenia</i>	<i>longifolia</i>	<i>longifolia</i>					23750
Poaceae	<i>Coleataenia</i>	<i>rigidula</i>	<i>rigidula</i>					23480
Poaceae	<i>Coleataenia</i>	<i>tenera</i>						22754
Poaceae	<i>Ctenium</i>	<i>aromaticum</i>						22733
Poaceae	<i>Dichantherium</i>	<i>acuminatum</i>		<i>fasciculatum</i>				23681
Poaceae	<i>Dichantherium</i>	<i>acuminatum</i>		<i>lindheimeri</i>				23336
Poaceae	<i>Dichantherium</i>	<i>arenicoloides</i>						23329
Poaceae	<i>Dichantherium</i>	<i>chamaelonche</i>	<i>chamaelonche</i>					22944
Poaceae	<i>Dichantherium</i>	<i>commutatum</i>		<i>commutatum</i>				23265
					23268	23391	23282	
Poaceae	<i>Dichantherium</i>	<i>dichotomum</i>		<i>dichotomum</i>				23266
					23286	23804		
Poaceae	<i>Dichantherium</i>	<i>erectifolium</i>						23683
Poaceae	<i>Dichantherium</i>	<i>leucothrix</i>						22756
					23842			
Poaceae	<i>Dichantherium</i>	<i>longiligulatum</i>						23685
Poaceae	<i>Dichantherium</i>	<i>ovale</i>		<i>addisonii</i>				23330
					23690	23705		
Poaceae	<i>Dichantherium</i>	<i>ovale</i>		<i>ovale</i>				23206
					23393	23706	23707	
Poaceae	<i>Dichantherium</i>	<i>portoricense</i>	<i>patulum</i>					22945
					23218			
Poaceae	<i>Dichantherium</i>	<i>portoricense</i>	<i>portoricense</i>					23698
					23392			
Poaceae	<i>Dichantherium</i>	<i>strigosum</i>		<i>strigosum</i>				23695
Poaceae	<i>Dichantherium</i>	<i>tenue</i>						23263
					23272			
Poaceae	<i>Dichantherium</i>	<i>villosissimum</i>		<i>villosissimum</i>				23682
Poaceae	<i>Dichantherium</i>	<i>webberianum</i>						23696
Poaceae	<i>Dichantherium</i>	<i>wrightianum</i>						23688
					23697			
Poaceae	<i>Digitaria</i>	<i>bicornis</i>						23799
Poaceae	<i>Digitaria</i>	<i>ciliaris</i>						23774
Poaceae	<i>Digitaria</i>	<i>villosa</i>						23442
Poaceae	<i>Eragrostis</i>	<i>virginica</i>						23758
					23836			
Poaceae	<i>Festuca</i>	<i>octoflora</i>		<i>octoflora</i>				23709
Poaceae	<i>Gymnopogon</i>	<i>ambiguus</i>						23461
Poaceae	<i>Leersia</i>	<i>virginica</i>						23810
Poaceae	<i>Luziola</i>	<i>fluitans</i>		<i>fluitans</i>				23801

Poaceae	<i>Panicum</i>	<i>virgatum</i>	<i>virgatum</i>	23857			
Poaceae	<i>Paspalum</i>	<i>boscianum</i>		23912			
Poaceae	<i>Paspalum</i>	<i>floridanum</i>		23328			
Poaceae	<i>Paspalum</i>	<i>notatum</i>		23794			
Poaceae	<i>Paspalum</i>	<i>setaceum</i>	<i>longipedunculatum</i>	23369	23868	23871	
Poaceae	<i>Paspalum</i>	<i>setaceum</i>	<i>rigidifolium</i>	23173			
Poaceae	<i>Paspalum</i>	<i>setaceum</i>	<i>setaceum</i>	23207	23332	23870	23921
Poaceae	<i>Paspalum</i>	<i>urvillei</i>		23837			
Poaceae	<i>Schizachyrium</i>	<i>scoparium</i>	<i>stoloniferum</i>	23440			
Poaceae	<i>Schizachyrium</i>	<i>tenerum</i>		22738			
Poaceae	<i>Setaria</i>	<i>pumila</i>		23835			
Poaceae	<i>Sorghastrum</i>	<i>secundum</i>		23470			
Poaceae	<i>Sporobolus</i>	<i>curtisii</i>		23923			
Poaceae	<i>Sporobolus</i>	<i>junceus</i>		23387			
Poaceae	<i>Tridens</i>	<i>ambiguus</i>		23922			
Poaceae	<i>Triplasis</i>	<i>americana</i>		23386	23930		
Poaceae	<i>Urochloa</i>	<i>platyphylla</i>		23798			
Polygalaceae	<i>Asemeia</i>	<i>grandiflora</i>		23862			
Polygalaceae	<i>Polygala</i>	<i>curtissii</i>		23186	23318	23819	
Polygalaceae	<i>Polygala</i>	<i>lutea</i>		23236			
Polygalaceae	<i>Polygala</i>	<i>ramosa</i>		23920			
Polygonaceae	<i>Eriogonum</i>	<i>tomentosum</i>		23308			
Polygonaceae	<i>Persicaria</i>	<i>hydropiperoides</i>		23908			
Polygonaceae	<i>Polygonum</i>	<i>pinicola</i>		23404	23404a		
Polygonaceae	<i>Polygonum</i>	<i>polygamum</i>	<i>croomii</i>	23405			
Portulacaceae	<i>Portulaca</i>	<i>amilis</i>		23942			
Rosaceae	<i>Amelanchier</i>	<i>arborea</i>		23823			
Rosaceae	<i>Aronia</i>	<i>arbutifolia</i>		23762			
Rosaceae	<i>Crataegus</i>	<i>lassa</i>	<i>colonica</i>	23258			
Rosaceae	<i>Crataegus</i>	<i>lassa</i>	<i>lassa</i>	23275			
Rosaceae	<i>Crataegus</i>	<i>lassa</i>	<i>recurva</i>	23250			
Rosaceae	<i>Crataegus</i>	<i>marshallii</i>		23778			
Rosaceae	<i>Prunus</i>	<i>alabamensis</i>		23732			

Rosaceae	<i>Prunus</i>	<i>caroliniana</i>		23876		
Rosaceae	<i>Prunus</i>	<i>serotina</i>	<i>serotina</i>	23785		
Rosaceae	<i>Prunus</i>	<i>umbellata</i>		23277		
Rubiaceae	<i>Cephalanthus</i>	<i>occidentalis</i>		23897		
Rubiaceae	<i>Diodella</i>	<i>teres</i>		23766		
Rubiaceae	<i>Diodia</i>	<i>virginiana</i>		23911		
Rubiaceae	<i>Galium</i>	<i>pilosum</i>	<i>puncticulosum</i>	23199	23273	
Rubiaceae	<i>Mitchella</i>	<i>repens</i>		23287		
Rubiaceae	<i>Oldenlandia</i>	<i>uniflora</i>		23396		
Rubiaceae	<i>Pinckneya</i>	<i>bracteata</i>		23304	23722	
Ruscaceae	<i>Nolina</i>	<i>georgiana</i>		23202		
Santalaceae	<i>Phoradendron</i>	<i>leucarpum</i>	<i>leucarpum</i>	23479		
Sapindaceae	<i>Acer</i>	<i>rubrum</i>	<i>trilobum</i>	23818		
Sapotaceae	<i>Sideroxylon</i>	<i>lanuginosa</i>	<i>lanuginosum</i>	23195	23877	23878
Sarraceniaceae	<i>Sarracenia</i>	<i>flava</i>		23890		
Sarraceniaceae	<i>Sarracenia</i>	<i>minor</i>		23680		
Selaginellaceae	<i>Bryodesma</i>	<i>acanthonota</i>		23734		
Selaginellaceae	<i>Bryodesma</i>	<i>arenicola</i>	<i>arenicola</i>	23792		
Selaginellaceae	<i>Bryodesma</i>	<i>arenicola</i>	<i>riddellii</i>	23280	23281	
Smilacaceae	<i>Smilax</i>	<i>auriculata</i>		23780		
Smilacaceae	<i>Smilax</i>	<i>bona-nox</i>	<i>bona-nox</i>	23821		
Smilacaceae	<i>Smilax</i>	<i>glauca</i>		23744	23820	23893
Smilacaceae	<i>Smilax</i>	<i>laurifolia</i>		23303	23481	23713
Smilacaceae	<i>Smilax</i>	<i>pumila</i>		23884		
Smilacaceae	<i>Smilax</i>	<i>rotundifolia</i>		23905		
Solanaceae	<i>Physalis</i>	<i>angulata</i>	<i>angulata</i>	23910		
Solanaceae	<i>Solanum</i>	<i>americanum</i>		23899		
Solanaceae	<i>Solanum</i>	<i>carolinense</i>	<i>carolinense</i>	23901		
Sphagnaceae	<i>Sphagnum</i>			23253		
Styracaceae	<i>Styrax</i>	<i>grandifolius</i>		23224	23395	
Symplocaceae	<i>Symplocos</i>	<i>tinctoria</i>		23192		
Tetrachondraceae	<i>Polypremum</i>	<i>procumbens</i>		23340		
Theaceae	<i>Gordonia</i>	<i>lasianthus</i>		23749		

Thelypteridaceae	<i>Macrothelypteris</i>	<i>torresiana</i>		23826															
Turneraceae	<i>Piriqueta</i>	<i>caroliniana</i>	<i>caroliniana</i>	23777															
Ulmaceae	<i>Ulmus</i>	<i>alata</i>		23738															
Urticaceae	<i>Boehmeria</i>	<i>cylindrica</i>		23907	23924														
Vitaceae	<i>Muscadinia</i>	<i>rotundifolia</i>	<i>munsoniana</i>	23325	23370	23865													
Vitaceae	<i>Parthenocissus</i>	<i>quinquefolia</i>		23874															
Xyridaceae	<i>Xyris</i>	<i>baldwiniana</i>		23687															
Xyridaceae	<i>Xyris</i>	<i>caroliniana</i>		22732															
Xyridaceae	<i>Xyris</i>	<i>curtissii</i>		23790															
Xyridaceae	<i>Xyris</i>	<i>difformis</i>		23255															
Xyridaceae	<i>Xyris</i>	<i>fimbriata</i>		23357	23361														
Xyridaceae	<i>Xyris</i>	<i>flabelliformis</i>		23853	23866														
Xyridaceae	<i>Xyris</i>	<i>jupicai</i>		22724	22725	22745	23359	23360	23482	23759	23854								
Xyridaceae	<i>Xyris</i>	<i>platylepis</i>		23358															

LIST OF FIGURES

Figure 1. Map of Alligator Creek Wildlife Management Area in Wheeler County, Georgia.

Figure 2. Vegetation map of Alligator Creek Wildlife Management Area, Wheeler County, Georgia.

Figure 3. Google Earth image of Alligator Creek Wildlife Management Area, Wheeler County, Georgia, showing locations of plant community sites from Table 2.

Figure 4. Google Earth image of northern portion of Alligator Creek Wildlife Management Area, Wheeler County, Georgia, showing locations of plant community sites 1 – 6 from Table 2.

Figure 5. Google Earth image of southern portion of Alligator Creek Wildlife Management Area, Wheeler County, Georgia, showing locations of plant community sites 7 – 13 from Table 2.

Figure 6. High-resolution Google Earth image of southern portion of Alligator Creek Wildlife Management Area, Wheeler County, Georgia, showing locations of plant community sites 10 – 12 from Table 2.

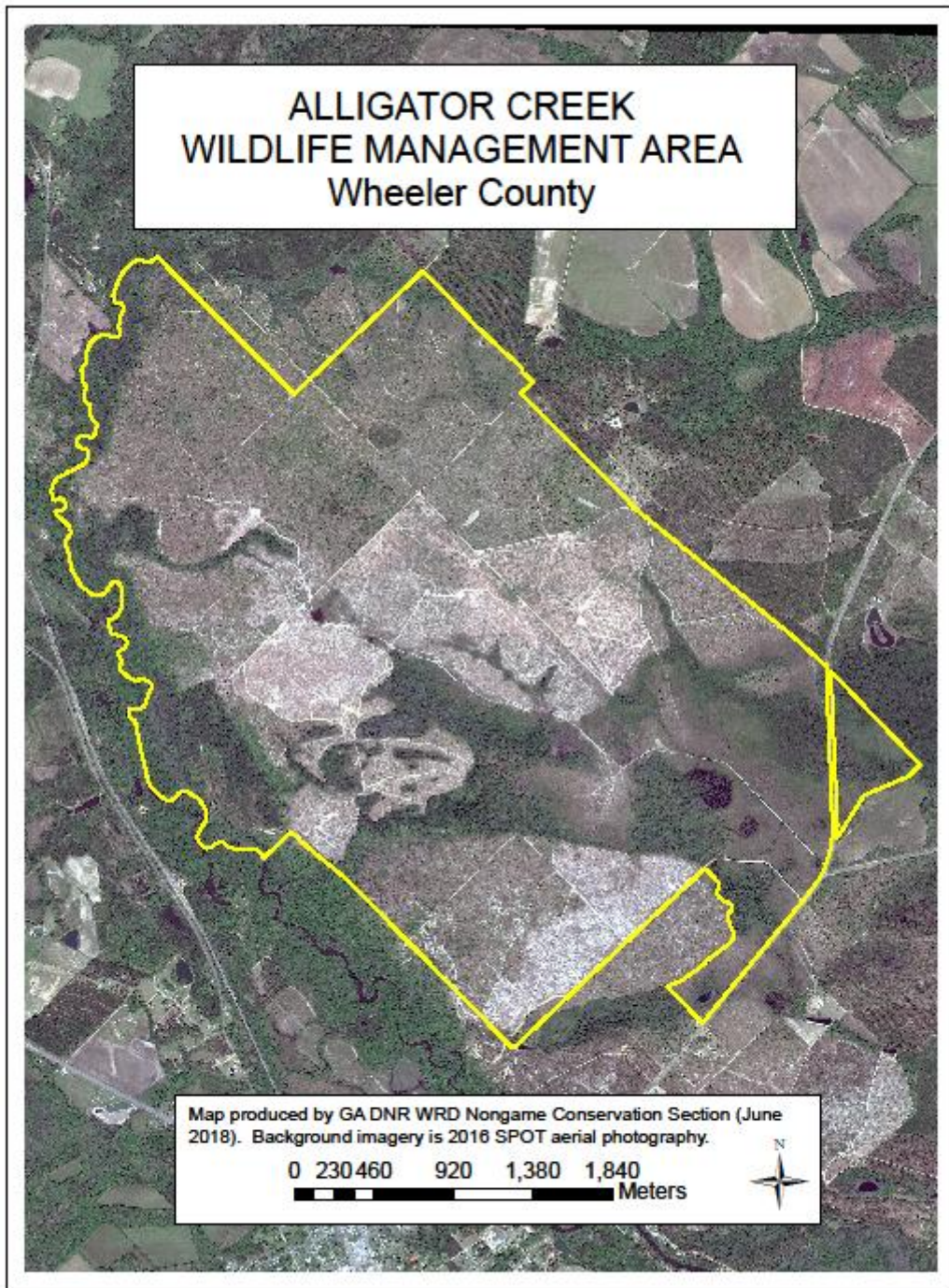


Figure 1. Map of Alligator Creek Wildlife Management Area (ACWMA) in Wheeler County, Georgia.

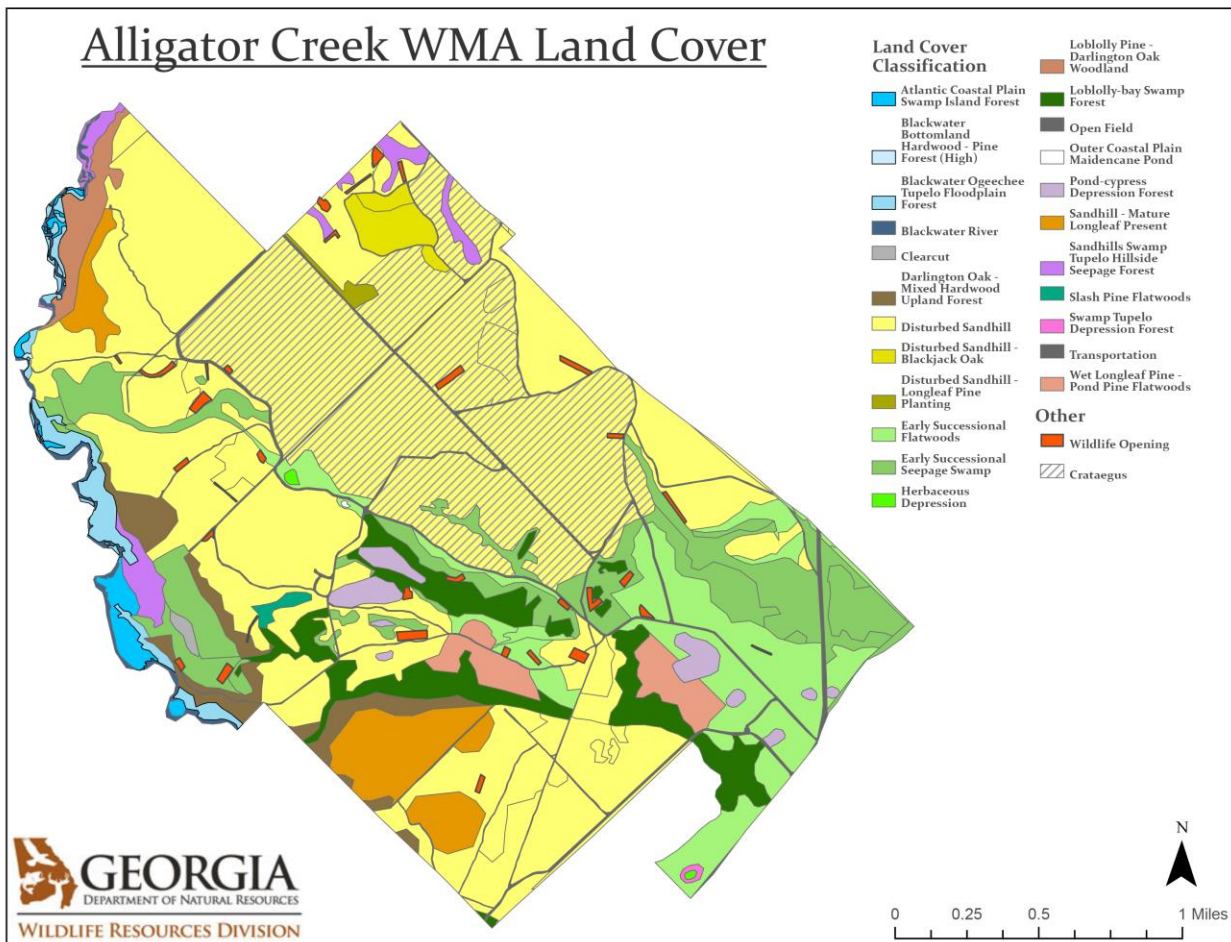


Figure 2. Vegetation map of Alligator Creek Wildlife Management Area, Wheeler County, Georgia (from Jacob Thompson).

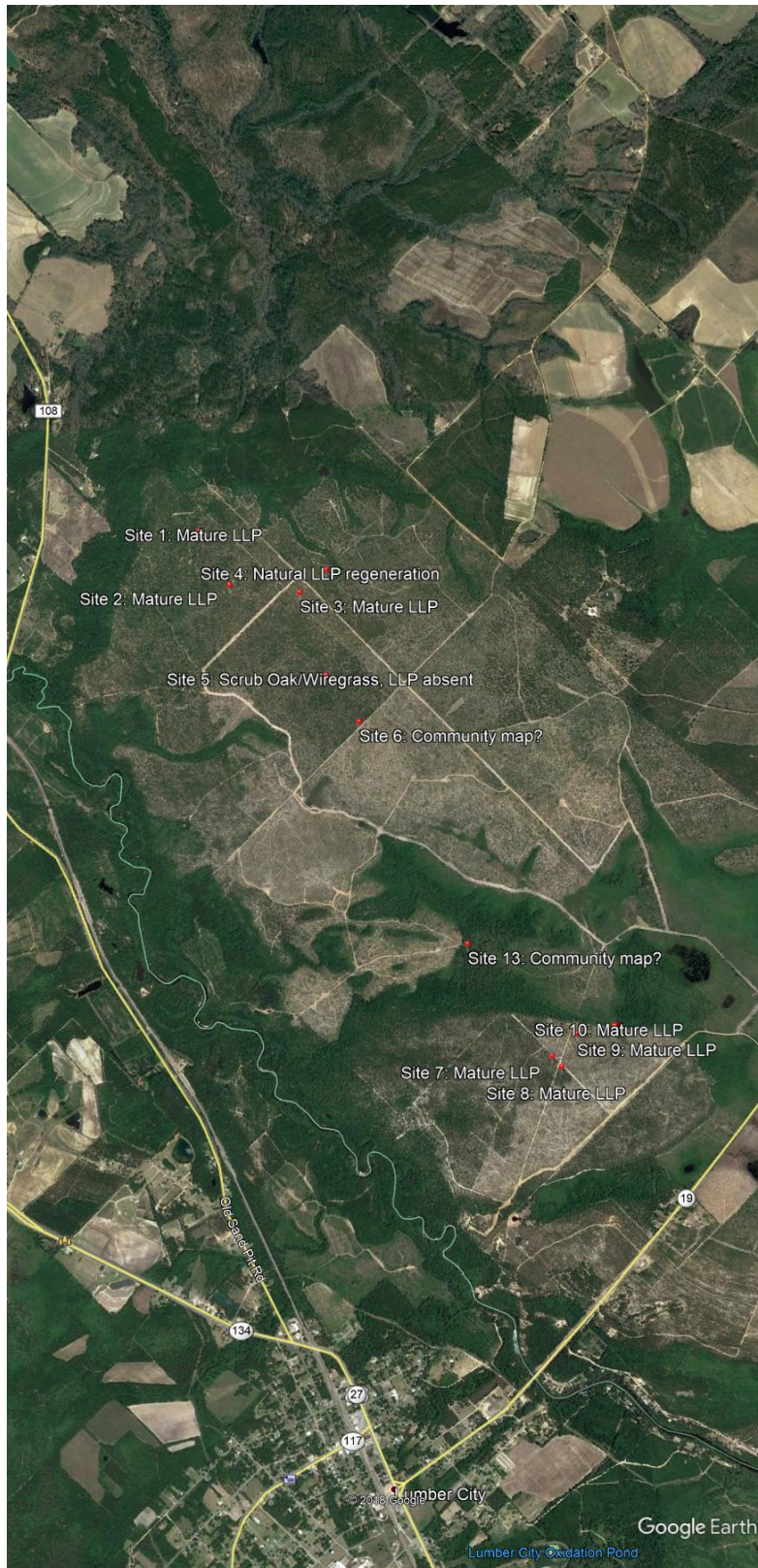


Figure 3. Google Earth image of Alligator Creek Wildlife Management Area, Wheeler County, Georgia, showing locations of plant community sites from Table 2.

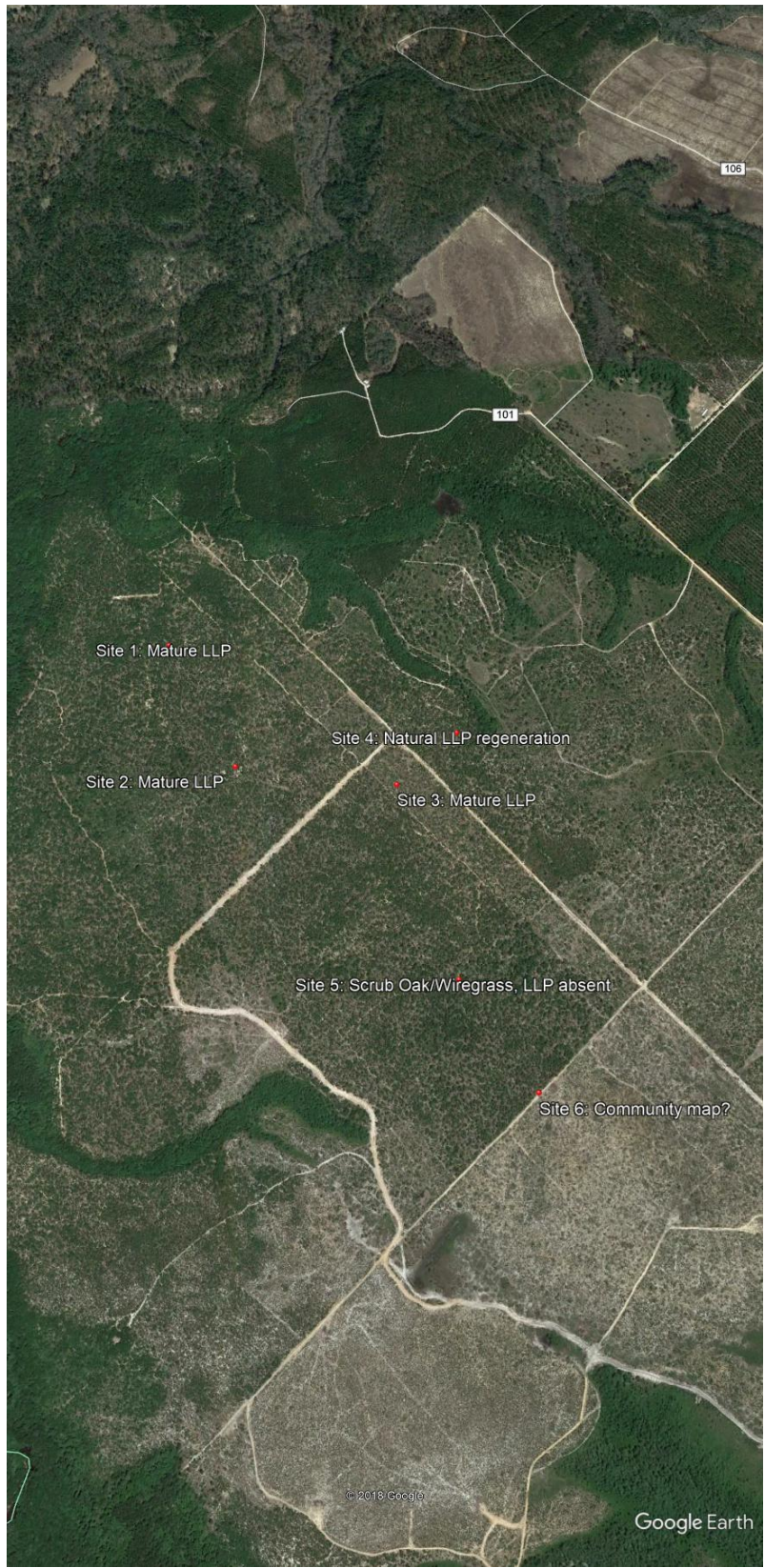


Figure 4. Google Earth image of northern portion of Alligator Creek Wildlife Management Area, Wheeler County, Georgia, showing locations of plant community sites 1 – 6 from Table 2.

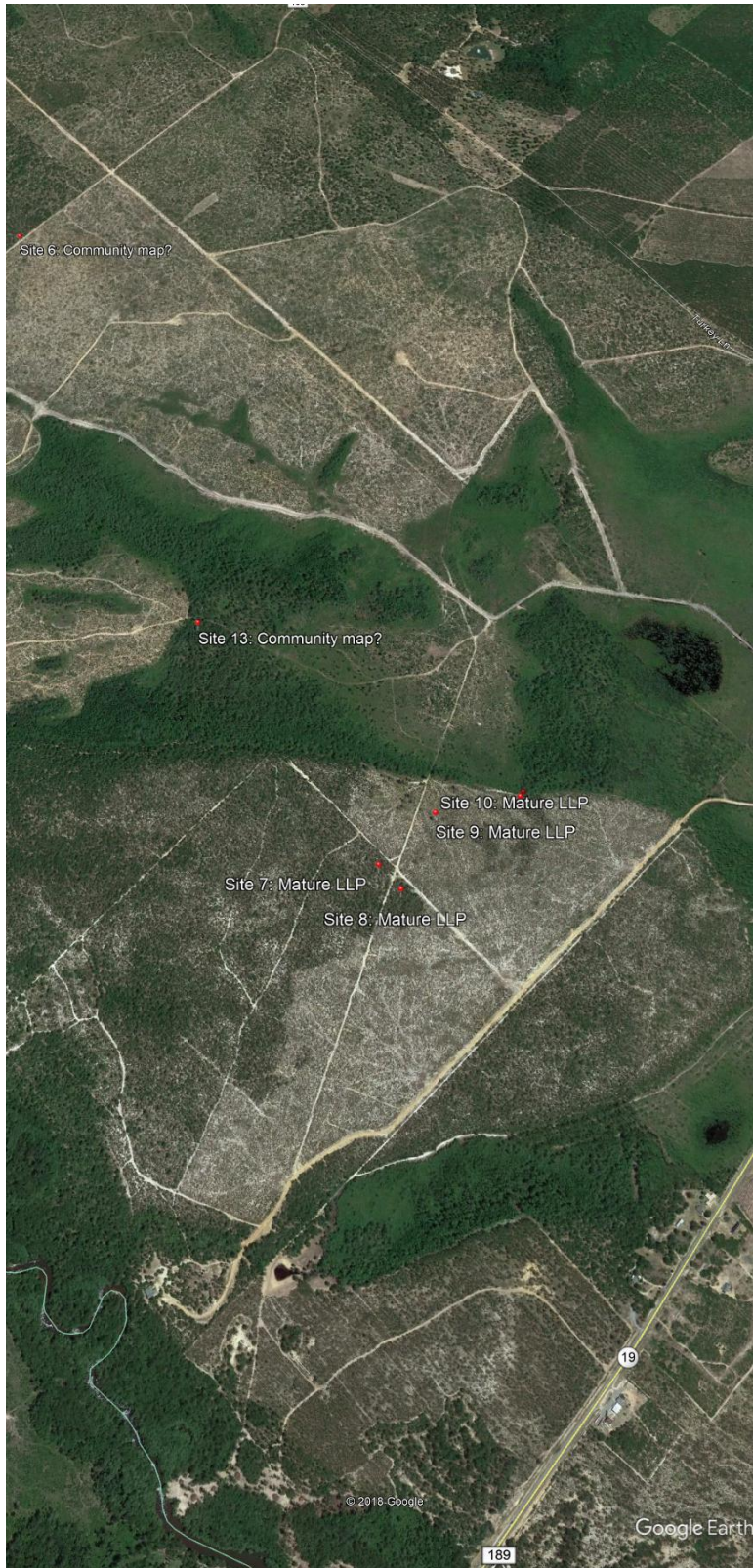


Figure 5. Google Earth image of southern portion of Alligator Creek Wildlife Management Area, Wheeler County, Georgia, showing locations of plant community sites 7 – 13 from Table 2.

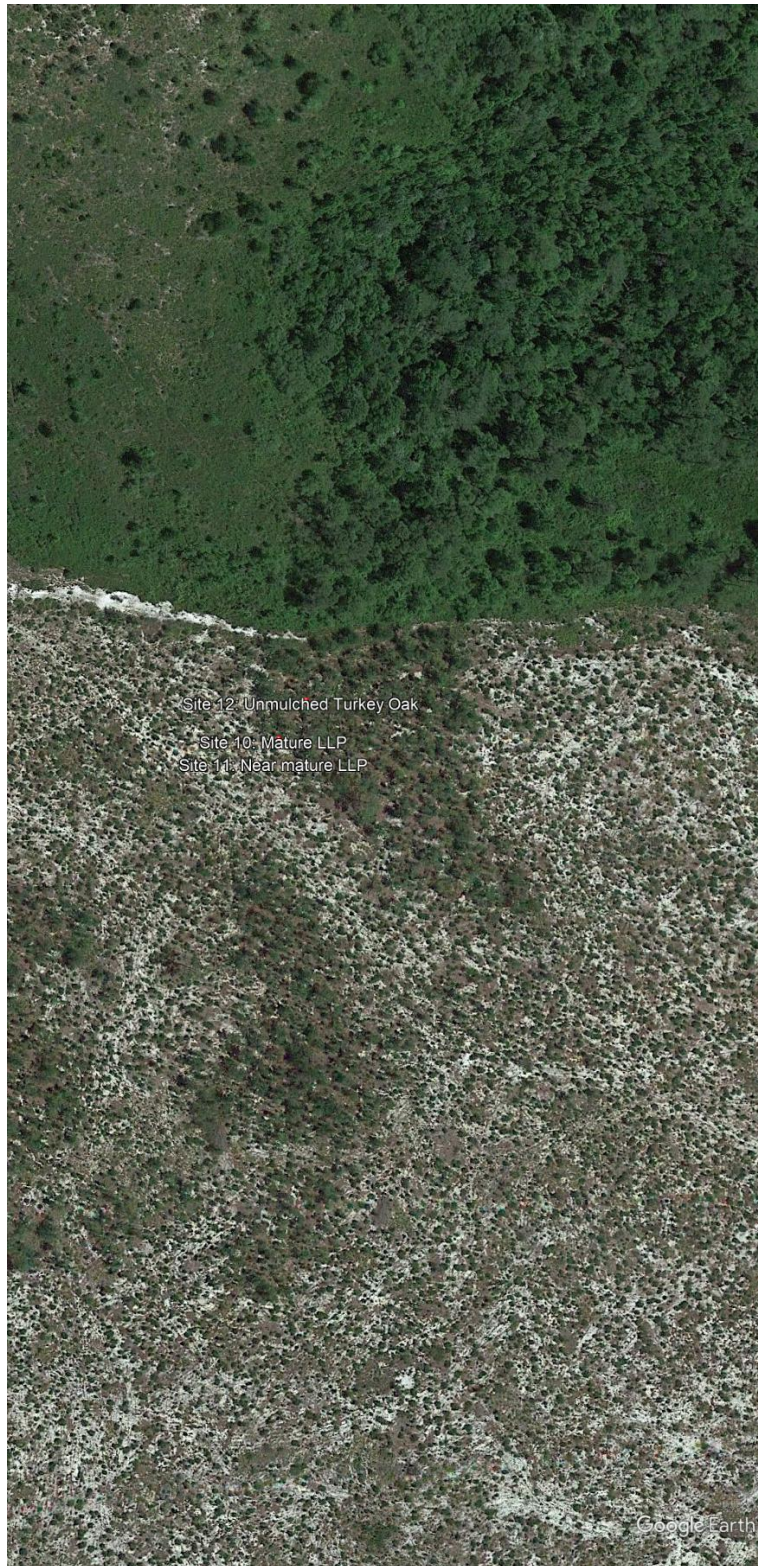


Figure 6. High-resolution Google Earth image of southern portion of Alligator Creek Wildlife Management Area, Wheeler County, Georgia, showing locations of plant community sites 10 – 12 from Table 2.