

VALDOSTA STATE

A photograph of the Valdosta State University dome building at dusk. The building is a large, circular structure with a prominent dome and a smaller, ornate cupola on top. The cupola has three arched openings. The main dome has a series of smaller arched windows around its base. The building is illuminated from within, making the windows glow. The sky is a deep blue, and the foreground is filled with the dark silhouettes of palm trees. The overall mood is serene and institutional.

Fact Book 2024

FACT BOOK 2024-2025
Thirty-Seventh Edition | October 2025

Office of Strategic Research & Analysis

VALDOSTA STATE UNIVERSITY

VALDOSTA, GEORGIA 31698 | (229) 333-7831

<https://www.valdosta.edu/administration/institutional-research/>



Welcome to Valdosta State, a comprehensive university - meaning we offer associate, bachelor, graduate, and doctoral degrees - that serves the heart of South Georgia in one of its largest cities. We love palm trees, live oaks, fountains, and sunny days on the Front Lawn. Our students love hands on experience, individual faculty interaction, and unique experiences like undergraduate research in the Florida Keys. Settled just fifteen minutes above the Florida state line, VSU offers in-state tuition to residents of Florida, as well as South Carolina, Alabama, and Tennessee.

At Valdosta State, students take learning beyond the classroom. Here, you can participate in research or practice with faculty members as early as your first year. You'll utilize technology from the hospital room to the news room and everywhere in between to gain professional-level knowledge in your field. You can study in over 100 locations around the world, then apply your experience at home. Whatever experience you're looking for, you can find it here.

Table of Contents

General Information	6	Largest Declared Undergraduate Majors	51
History of VSU	8	One-year Retention Rates	52
Mission Statement	9	Graduation Rates	53
VSU Presidents	10	Degrees Conferred by College	54
Strategic Plan, Vision and Goals.....	11	Undergraduate Degrees Conferred by College	55
Board of Regents.....	12	Georgia Counties with Highest Alumni Residency	56
USG Administrative Staff.....	12	Alumni by State of Residence	57
USG Organizational Chart.....	14	Student Services	58
VSU Organizational Chart	15	VSU's Men's and Women's Athletics	59
Undergraduate Programs	16	Quick Facts about Student Services	60
Graduate Programs	18	Residence Hall Occupancy	61
Accreditation Agencies	19	Residence Hall Occupancy by Gender	62
Historical Information	20	Financial Aid Awarded	63
Enrollment Headcount	21	Odum Library Collection	64
First-time, Full-time Freshman Retention Rates.....	22	Employee Information	65
Undergraduate Graduation Rates	23	Quick Facts about VSU's Employees	66
Degrees Conferred	24	Employees by Occupational Area	67
Student Information	25	Employees by Occupational Area and Time Status	68
Enrollment Quick Facts	28	Employees by Occupational Area and Gender	69
Fall Admissions Freshman Profile	29	Employees by Gender and Ethnicity	70
New Students Enrolled by Classification	30	Instructional Faculty by College and Time Status	71
Admissions of New Freshman	31	Full-Time Instructional Faculty by Gender and Ethnicity	72
Mean SAT and ACT Scores of New Freshman.....	32	Full-Time Instructional Faculty by Tenure Status	73
Mean High School GPA of New Freshman	33	Full-time Instructional Faculty by Highest Degree	74
High Schools with Highest Enrollment	34	Full-time Instructional Faculty by Gender and Academic Rank	75
Admissions of Transfer Students	35	Graduate Assistants by Gender	76
Transfer Students by Classification	36	Financial Information	77
New Graduate Students by Classification	37	Quick Facts about VSU's Finances:	78
Mean GRE Scores of New Graduate Students	38	VSU's Total Sources of Funding	79
Previous Institutions of New Graduate Students.....	39	Operating Revenue by Source	80
Enrollment and Full-time Equivalent Enrollment	40	Non-operating Revenues (Expenses) by Source	81
Enrollment by Time Status	41	Operating Expenditures by Classification	82
Enrollment by Classification	42	Operating Expenditures by Functional and Natural Classifi- cation	83
Enrollment by Ethnicity and Gender	43	Operating Expenditures per FTE	84
Enrollment by College	44		
Enrollment by Time Status, Classification, and College	45		
Enrollment by Residency	46		
Enrollment by Georgia Economic Development Region	47		
Counties with Highest Enrollment	48		
Enrollment by State of Origin	49		
Enrollment by Country of Citizenship	50		

General Information



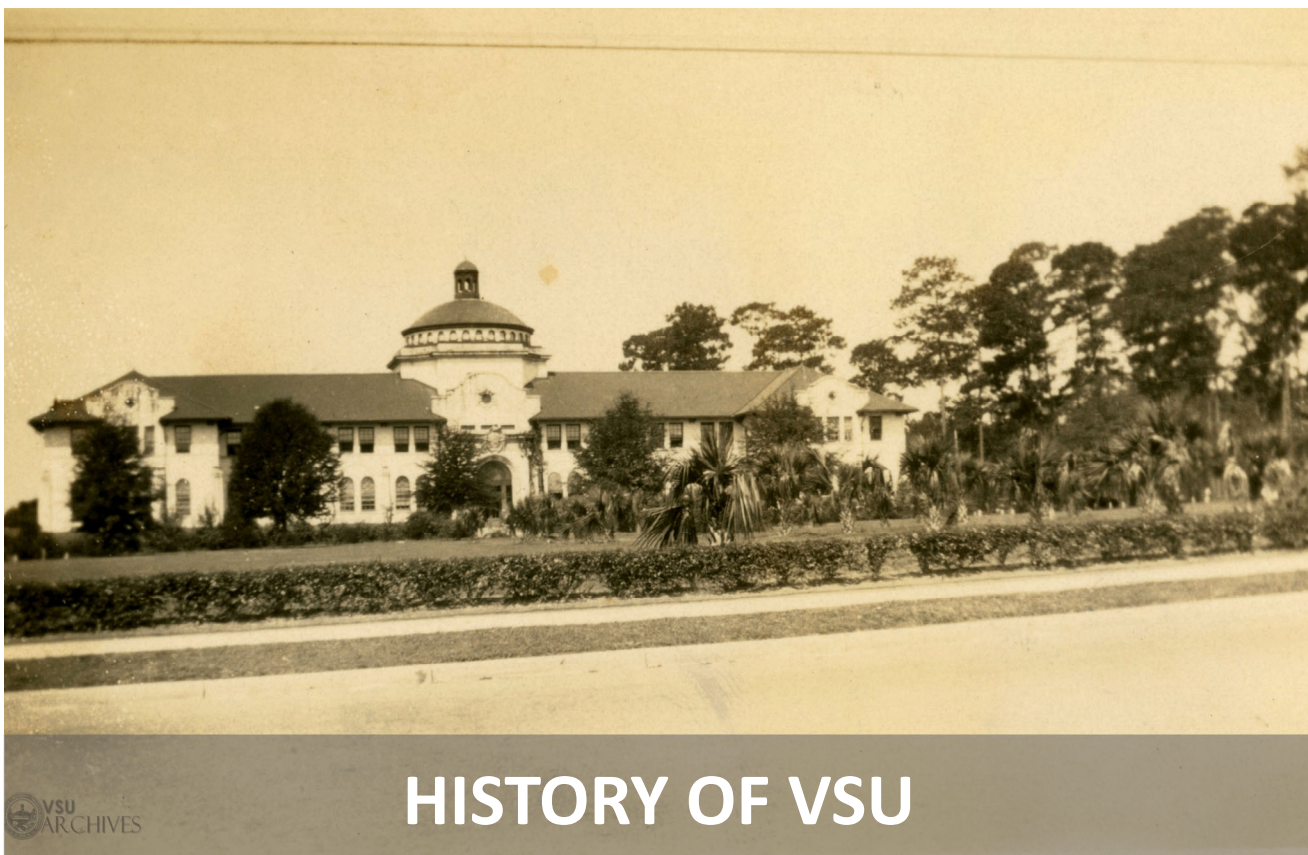
General Information

- **Quick Facts**
- **Brief History of Valdosta State University**
- **Concise Mission Statement**
- **Presidents of VSU**
- **Strategic Goals**
- **Board of Regents Membership**
- **Board of Regents Organizational Chart**
- **VSU Organizational Chart**
- **Degrees and Majors offered**
- **Accreditations**



Quick Facts about VSU's History:

- Valdosta State College became a Regional University within the University System of Georgia on July 1, 1993; its name was officially changed to Valdosta State University. VSU celebrated its centennial years from 2006 to 2013, marking the institution's establishment and opening. VSU became a comprehensive university within the University System of Georgia on July 1, 2013.
- The university includes the College of Science & Mathematics, the College of Humanities & Social Sciences, the Langdale College of Business Administration, the Dewar College of Education & Human Services, the College of the Arts, the College of Nursing & Health Sciences, as well as the Honors College, Graduate School, Online College for Career Advancement, and the University College.
- VSU offers forty-two bachelor programs and three associate programs on the undergraduate level. At the graduate level, VSU offers thirty master programs, six education specialists' programs, and five doctoral programs at the graduate level.
- In 2021, the Commission on Colleges of the Southern Association of Colleges and Schools reaffirmed VSU's regional accreditation as a part of its 10-year review process.



HISTORY OF VSU

A special act by the Georgia General Assembly established an institution of higher learning in Valdosta, Georgia, in 1906. South Georgia State Normal College opened to young ladies on January 2, 1913 as a two-year college specializing in teacher training. An act by the General Assembly in 1922 changed the institution's name to Georgia State Woman's College at Valdosta and authorized a four-year liberal arts program leading to a bachelor's degree.

In 1950, after 37 years as a woman's college, the Board of Regents of the University System of Georgia approved the coeducational status and a new name for the institution: Valdosta State College. During the following forty-three years, the school grew exponentially in numbers through expanded undergraduate and graduate degree programs. In 1993, Valdosta State College was named a Regional University by the Board of Regents and became Valdosta State University. In 2013 VSU became a Comprehensive University.

As a comprehensive university in South Georgia, VSU collaborates with other University System of Georgia (USG) institutions to provide educational programs to the university's 41-county service region. To expand its programmatic outreach, VSU continues to develop and offer distance learning programs and courses at off-campus locations throughout Georgia and online.

Note: Photo courtesy of Valdosta State Archives.



Concise Mission Statement

As a comprehensive institution of the University System of Georgia, Valdosta State University (VSU) is a welcoming, aware, and vibrant community. Through excellence in teaching, basic and applied research, and service, VSU provides rigorous programs and opportunities that enrich our students, our university, and our region. As such, the VSU mission consists of three interrelated parts:

Student Mission:

To provide all students with an inspired education, a safe learning environment, a nurturing community, and a wealth of experience that assists students in molding their futures in a creative, conscious, and caring fashion while preparing them to be lifelong learners who will meet the needs of a changing global society.

University Mission:

To operate the university with a focus toward human, environmental, and financial sustainability while increasing value to our local, regional, national, and international stakeholders.

Regional Mission:

To provide our region and our home with the resources and support necessary to develop and sustain a higher quality of living, greater economic and regional development, and inspired innovation that nurtures and respects our vibrant community and beautiful environment while promoting academic outreach, public and private entrepreneurship, and collaboration with all regional entities.

Source: VSU: *Organization and Mission* <https://www.valdosta.edu/about/facts/organization-and-mission.php>

Presidents of VSU



Richard A. Carvajal
(2017 to present)

Prior Presidents

Richard H. Powell (1913-1933)

Jere M. Pound (1933-1934)

Frank R. Reade (1935-1948)

J. Ralph Thaxton (1948-1966)

S. Walter Martin (1966-1978)

Hugh C. Bailey (1978-2001)

Ronald M. Zaccari (2002-2008)

Patrick J. Schloss (2008-2011)

Louis Levy (2011-2012, Interim)

William J. McKinney (2012-2015)

Cecil P. Staton (2015-2016, Interim)

Kelli R. Brown (2016, Interim)

Vision

Valdosta State University will be a catalyst for regional comprehensive progress.

VSU Strategic Plan | VSU2030

Shared Values

Through excellence in teaching, basic and applied research, and service, VSU provides rigorous programs and opportunities that enrich our students, our university, and our region. As such, the VSU mission consists of three interrelated parts: Student Mission, University Mission, and Regional Mission.

Strategic Goals

Goal #1:

Create Career-Ready Graduates

Align VSU’s degree program mix with student and employer demand and ensure that all programs ready their graduates to succeed in their careers, in life, and as citizens.

Goal #2:

Build On Our Foundation

Make VSU’s traditional undergraduate opportunity a first-choice option of prospective learners who desire an on-campus learning experience that is dynamic, engaging, distinct from fully online programs of study, and supported by services that build community and aid completion.

Goal #3:

Maximize Growth

Fully capitalize on the Online College for Career Advancement, Graduate School, and international student recruitment by removing roadblocks and making timely strategic investments.

Goal #4:

Invest In Our Future

The VSU family will advance the success of this plan through a capital campaign that provides the targeted investments needed to maximize growth.

Blazer Creed

Civility

A Blazer shows courtesy and compassion as well as respect for the dignity of every human being.

Integrity

Each Blazer is responsible for his or her own actions, and our community is stronger when we contemplate the context of our decisions and uphold the principles of trust and honesty.

Citizenship

Each Blazer has an interest in the well-being of the community, and, therefore, a duty to stay informed, to make positive contributions, and to offer support to those who need help.

Board of Regents

Patrick C. Jones	First
Bárbara Rivera Holmes	Second
Mat Swift	Third
Cade Joiner.....	Fourth
T. Dallas Smith (Vice Chair)	Fifth
Tom Bradbury	Sixth
Richard “Tim” Evans	Seventh
W. Allen Gudenrath	Eighth
James K. Syfan, III.....	Ninth
Harold Reynolds (Chair)	Tenth
David B. Dove	Eleventh
C. Everett Kennedy III	Twelfth
Dan Murphy.....	Thirteenth
Lowery Houston May	Fourteenth
Samuel D. Holmes	At Large
Erin Hames	At Large
James M. Hull	At-Large
Neil L. Pruitt, Jr.	At Large
Deep J. Shah	At Large

University System of Georgia Administrative Staff

Chancellor’s Office

Dr. Sonny Perdue Chancellor

External Affairs

Mr. M. Scott Bryant Vice Chancellor, Development

Ms. Ashley Jones May Chief of Staff, Vice Chancellor of External Affairs

Mr. Chris Kid Director of Economic Development

Academic Affairs

Dr. Ashwani Monga..... Executive Vice Chancellor, Chief Academic Officer

Dr. Laura R. Lynch Associate Vice Chancellor, Academic Programs and Policy

Dr. Dana Nichols..... Vice Chancellor, Academic Affairs

Mr. Christopher M. Davidson, J.D..... Associate Vice Chancellor/State Archivist

Ms. Julie Walker State Librarian, Georgia Public Library Service

Mr. Scott Votaw Assistant Vice Chancellor, Georgia Film Academy

Ms. Lucy Harrison Assistant Vice Chancellor for Academic Library Services/Executive Director (GALILEO)

Dr. Scot Lingrell..... Vice Chancellor for Enrollment Management & Student Affairs and Innovation

Ms. Sabrina Thompson Director of Athletics

University System of Georgia Administrative Staff *continued*

Administration and Operations

Ms. Teresa MacCartney	Chief Operating Officer
Mr. Timothy M. Chester	Vice Chancellor and CIO
Ms. Sandra L. Neuse	Vice Chancellor for Real Estate, & Facilities
Ms. Karin Elliott	Vice Chancellor, Human Resources
Mr. Christopher McGraw	Vice Chancellor of Legal Affairs
Ms. Jenna Wiese, CPA, CFE ..	Vice Chancellor for Internal Audit, Ethics & Compliance/Chief Audit Officer
Mr. Todd Watson	Interim Chief Information Security Officer
Dr. Wendi Jenkins	Vice Chancellor, Leadership and Institutional Development
Mr. Kerry Stallings	Director of Safety & Security (Chief of Police)
Dr. Angela Bell	Vice Chancellor Research & Policy Analysis
Mr. Rich Loftus	Associate Vice Chancellor
Cherry Zhang	Assistant Vice Chancellor

Fiscal Affairs

Ms. Tracey Cook	Chief Fiscal Officer/Treasurer
Mr. Jeff Davis	Vice Chancellor for Fiscal Affairs

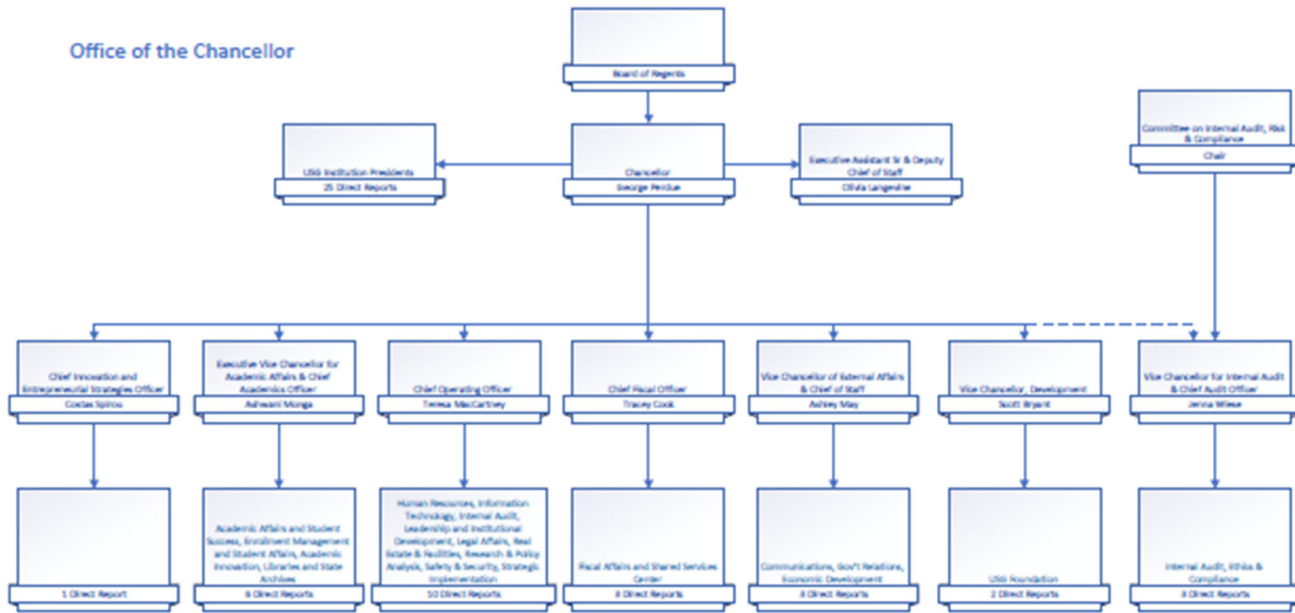
Valdosta State University Senior Administrative Officers - Fall 2024

Dr. Richard A. Carvajal	President
Dr. Sheri R. Noviello	Interim Provost & Vice President for Academic Affairs
Ms. Traycee Martin	Vice President for Finance & Administration
Dr. Vince Miller	Vice President for Enrollment & Student Affairs
Mr. Rick Munroe	Vice President for University Advancement
Mr. Kevin Overlaur	Chief Information Officer
Mr. Troy Katen	Director of Athletics

Valdosta State University Deans - Fall 2024

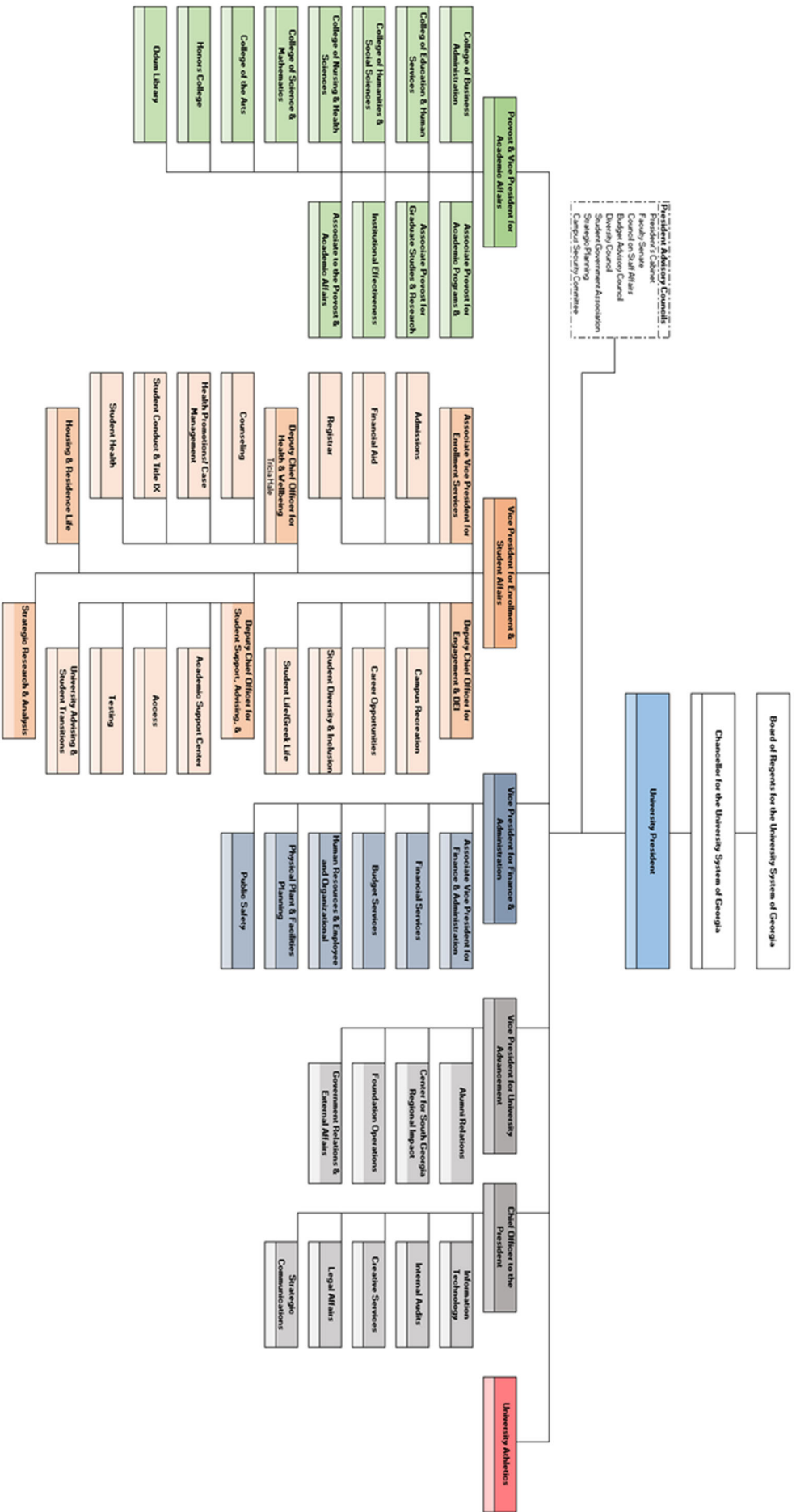
Dr. Nicole B. Cox	College of the Arts
Dr. Karin Pafford Roland	College of Business Administration
Dr. David Slykhuis	College of Education & Human Services
Dr. James LaPlant	College of Humanities & Social Sciences
Dr. Michelle Ritter	College of Nursing & Health Sciences
Dr. Pierre-Richard Cornely	College of Science & Mathematics
Dr. Michael Savoie	Honors College
Dr. Laura Wright	Odum Library

Board of Regents Organizational Chart



Source: University System of Georgia

VSU Organizational Chart



Source: VSU SRA, 2023.

Undergraduate Programs

COLLEGE OF THE ARTS

[Undergraduate Majors]

BA/BFA in Art
 BFA in Communication
 BFA in Dance
 BFA in Interior Design
 BFA in Mass Media
 BA in Music
 BM in Music Performance
 BFA in Theatre Arts

[Undergraduate Minors]

Art
 Communication
 Dance
 Mass Media Studies
 Music
 Theatre Arts

COLLEGE OF BUSINESS ADMINISTRATION

[Undergraduate Majors]

BBA in Accounting
 BBA in Applied Economics
 BBA in Finance
 BBA in General Business
 BBA in Management
 BBA in Marketing

[Undergraduate Minors]

Advertising and Promotions
 Economics
 Entrepreneurship
 Healthcare Administration
 Human Resources Management

COLLEGE OF EDUCATION & HUMAN SERVICES

[Undergraduate Majors]

BSEd in American Sign Language and English
 Interpreting
 BSEd in Communication Disorders
 BSEd in Elementary Education
 BSEd in Middle Grades Education
 BSEd in Secondary Education
 BS in Office Administration and Technology
 BSEd in Workforce Education and Development

[Undergraduate Minors]

Coaching
 Deaf Studies
 Health and Physical Education
 Recreation and Leisure

COLLEGE OF HUMANITIES & SOCIAL SCIENCES

[Undergraduate Majors]

BS in Criminal Justice
 BA in English
 BA in History
 Dual BA/BSEd in History and Secondary
 Education
 BA in Interdisciplinary Studies
 BS in Organizational Leadership
 BA/BS in Psychology
 BA in Political Science
 BA in Sociology and Anthropology
 BA in Spanish Language and Literature

Source: VSU Office of Institutional Effectiveness, 2024.

College of Humanities & Social Sciences continued

[Undergraduate Minors]

- Africana Studies
- Anthropology
- French
- German
- History
- Journalism
- Middle Eastern Studies
- Native American Studies
- Philosophy
- Political Science
- Professional and Applied Ethics
- Public Administration
- Religious Studies
- Sociology
- Spanish
- Women’s and Gender Studies

- Geology
- Mathematics
- Physics

CERTIFICATE PROGRAMS

[College of Humanities and Social Sciences]

- European Union Studies
- Latin American Studies
- Spanish for Professionals
- Teaching English to Speakers of Other Languages

[Academic Affairs and Student Affairs]

- University Honors
- Cooperative Education
- Advanced Cooperative Education (Diploma Seal)

COLLEGE OF NURSING & HEALTH SCIENCES

[Undergraduate Majors]

- AAS in Dental Hygiene
- BS in Exercise Physiology
- BS in Health Sciences
- BSN in Nursing

[Undergraduate Minors]

- Nutritional Science

COLLEGE OF SCIENCE & MATHEMATICS

[Undergraduate Majors]

- BA/BS in Biology
- BS in Chemistry
- BS in Computer Information Systems
- BS in Computer Science
- BS in Engineering Technology
- BS in Environmental Geosciences

College of Science & Mathematics continued

[Undergraduate Minors]

- Aerospace Studies
- Applied Statistics
- Astronomy
- Biology
- Chemistry
- Computer Science
- Geography

Graduate Programs

COLLEGE OF THE ARTS

[Graduate Degrees]

MA in Communication
 MAT in Music Education
 MMP in Music Performance

COLLEGE OF BUSINESS ADMINISTRATION

[Graduate Degrees]

MAcc in Accountancy
 MBA in Business Administration

- General Business Track
- Healthcare Administration Track

COLLEGE OF EDUCATION & HUMAN SERVICES

[Graduate Degrees]

MEd in Adult and Career Education
 MEd in Communication Disorders
 MEd in Counselor Education
 MEd in Curriculum and Instruction

- Accomplished Teaching

 MEd in Elementary Education
 MAT in Education
 MEd in Educational Leadership

- P-12 School Leadership
- Higher Education Leadership

 MEd/MAT in Health and Physical Education
 MEd in Instructional Technology

- Non P-12 Technology Applications
- P-12 Technology Applications
- School Library Media

 MLIS in Library and Information Science
 MS in Marriage and Family Therapy
 MS in Psychology
 MSW in Social Work
 MAT in Special Education

- Deaf and Hard of Hearing
- General Curriculum

 MEd in Special Education

- Deaf and Hard of Hearing

[Specialist Programs]

EdS in Coaching Pedagogy in Physical Education
 EdS in Educational Leadership
 EdS in Instructional Technology

- P-12 Technology Applications
- P-12 Technology Applications W/ Library
- Non P-12 School Personnel Applications

 EdS in School Counseling
 EdS in Teacher Leadership
 EdS in Special Education

[Doctoral Programs]

EdD in Adult Learning and Development
 EdD in Curriculum and Instruction

- Learning & Development
- P-12 Disciplinary Concentration

 EdD in Leadership

COLLEGE OF HUMANITIES AND SOCIAL SCIENCES

[Graduate Degrees]

MA in English Studies for Language Arts Teachers
 MA in English
 MAT in World Languages
 MA in History
 MPA in Public Administration
 MS in Sociology
 MS in Criminal Justice Administration

[Doctoral Programs]

DPA in Public Administration

COLLEGE OF NURSING AND HEALTH SCIENCES

[Graduate Degrees]

MSN in Nursing

[Doctoral Programs]

DNP in Nursing
 DNP/MBA Dual Degree in Nursing

COLLEGE OF SCIENCE AND MATHEMATICS

[Graduate Degrees]

MS in Biology

Georgia PSC Certificate Programs

[College of Education and Human Services]

Early Childhood Education
 Educational Leadership
 Health and Physical Education
 Online Teaching
 School Counseling
 School Library Media
 Secondary Education Fields

Georgia PSC Endorsement Programs

[College of Education and Human Services]

Reading Education
 Gifted In-Field

Accreditation

PROGRAMS ELIGIBLE FOR ACCREDITATION	MOST RECENT ACCREDITATION	ACCREDITATION AGENCY
VSU		
VSU	2021	Southern Association of Colleges and Schools Commission on Colleges (SACSCOC)
COLLEGE OF BUSINESS ADMINISTRATION		
College of Business Administration	2022	AACSB International-The Association to Advance Collegiate Schools of Business
Accounting	2022	AACSB International-The Association to Advance Collegiate Schools of Business
COLLEGE OF EDUCATION & HUMAN SERVICES		
College of Education & Human Services	2022	Georgia Professional Standards Commission
Communication Disorders	2022	Council on Academic Accreditation of the American Speech-Language-Hearing Association
School Counseling	2017	Council for Accreditation of Counseling and Related Educational Programs
Instructional Technology	2022	American Association of School Librarians
Library & Information Science	2022	American Library Association
Marriage & Family Therapy	2020	Commission on Accreditation for Marriage and Family Therapy Training and Education of the American Association for Marriage and Family Therapy
Social Work	2018	Council on Social Work Education
COLLEGE OF NURSING & HEALTH SCIENCES		
Exercise Physiology	2022	Commission on Accreditation of Allied Health Education Programs
Nursing	2021	Commission on Collegiate Nursing Education
COLLEGE OF SCIENCE & MATHEMATICS		
Chemistry	2023	American Chemical Society
Computer Science	2022	Computing Accreditation Commission of Accreditation Board for Engineering and Technology, Inc. (ABET)
COLLEGE OF HUMANITIES & SOCIAL SCIENCES		
French Education	2022	American Council on the Teaching of Foreign Languages
Public Administration	2019	National Association of Schools of Public Affairs and Administration
Spanish Education	2022	American Council on the Teaching of Foreign Languages
COLLEGE OF THE ARTS		
Art	2025	National Association of Schools of Art and Design
Theatre Arts	2016	National Association of Schools of Theatre
Art Education	2022	Georgia Professional Standards Commission
Music	2018	National Association of Schools of Music
Music Education	2022	Georgia Professional Standards Commission

Source: VSU Office of Institutional Effectiveness, 2025

Historical Information

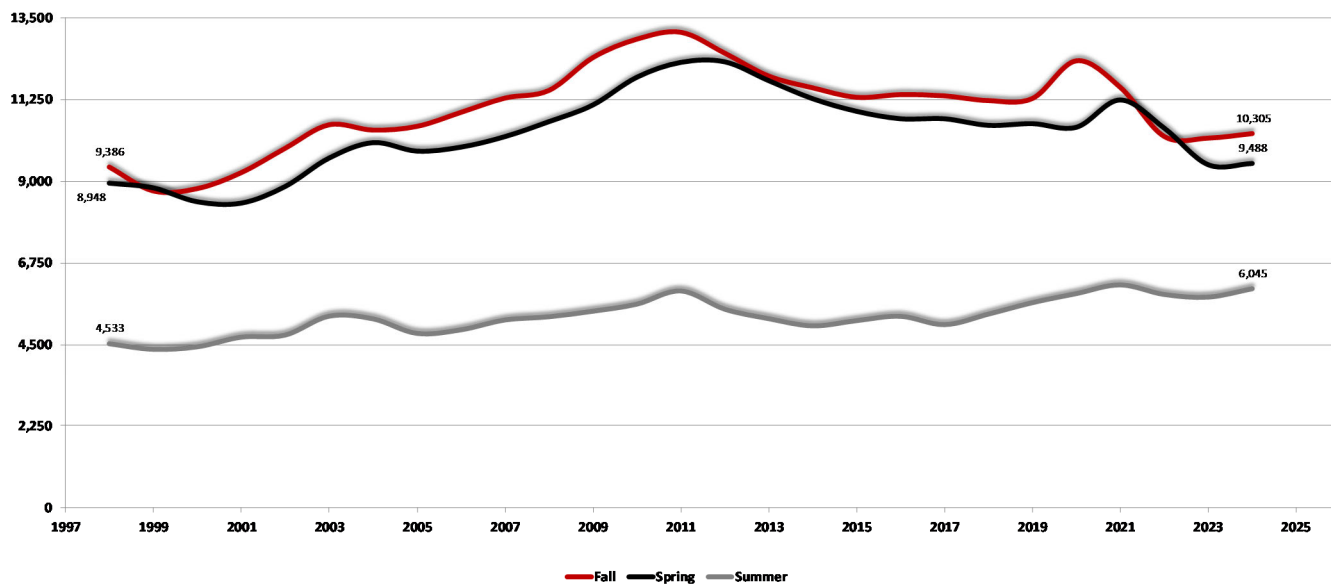


Total Enrollment Headcount

Year	Spring	Summer	Fall	Year	Spring	Summer	Fall
1998	8,948	4,533	9,386	2012	12,277	5,483	12,515
1999	8,820	4,380	8,729	2013	11,760	5,223	11,885
2000	8,438	4,449	8,792	2014	11,265	5,025	11,563
2001	8,400	4,714	9,230	2015	10,919	5,169	11,302
2002	8,856	4,771	9,900	2016	10,715	5,288	11,375
2003	9,636	5,291	10,547	2017	10,714	5,059	11,341
2004	10,060	5,218	10,400	2018	10,534	5,348	11,211
2005	9,827	4,818	10,503	2019	10,580	5,663	11,270
2006	9,937	4,916	10,888	2020	10,482	5,912	12,304
2007	10,225	5,186	11,280	2021	11,231	6,151	11,573
2008	10,635	5,274	11,490	2022	10,457	5,887	10,225
2009	11,092	5,427	12,391	2023	9,453	5,815	10,180
2010	11,853	5,621	12,898	2024	9,488	6,045	10,305
2011	12,261	5,984	13,089	2025	9,525		

Source: USG Semester Enrollment Reports. Analysis by VSU SRA, 2025

Total Enrollment Headcount 1998 - 2024



Source: USG Semester Enrollment Reports. Analysis by VSU SRA, 2025.

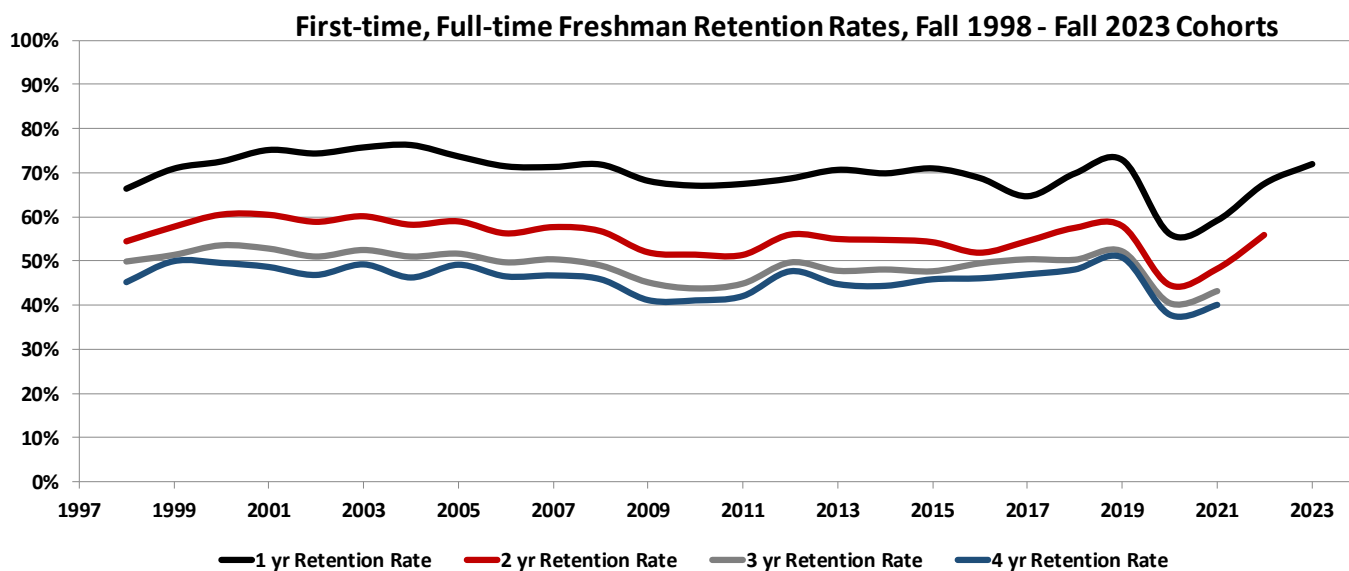
First-time, Full-time Freshman Retention Rates

Cohort	1 yr Retention Rate	2 yr Retention Rate	3 yr Retention Rate	4 yr Retention Rate	Cohort	1 yr Retention Rate	2 yr Retention Rate	3 yr Retention Rate	4 yr Retention Rate
Fall 1998	66.3%	54.5%	50.0%	45.2%	Fall 2011	67.4%	51.4%	45.0%	42.0%
Fall 1999	70.9%	57.8%	51.5%	49.9%	Fall 2012	68.6%	56.0%	49.8%	47.6%
Fall 2000	72.5%	60.5%	53.7%	49.5%	Fall 2013	70.6%	55.0%	47.9%	44.7%
Fall 2001	75.1%	60.5%	52.9%	48.6%	Fall 2014	69.8%	54.8%	48.2%	44.3%
Fall 2002	74.3%	58.9%	51.1%	46.8%	Fall 2015	70.9%	54.3%	47.8%	45.8%
Fall 2003	75.7%	60.1%	52.6%	49.2%	Fall 2016	68.7%	51.9%	49.6%	46.0%
Fall 2004	76.2%	58.2%	51.1%	46.2%	Fall 2017	64.6%	54.5%	50.5%	46.9%
Fall 2005	73.6%	59.0%	51.8%	49.1%	Fall 2018	69.8%	57.5%	50.4%	48.0%
Fall 2006	71.4%	56.3%	49.8%	46.5%	Fall 2019	72.8%	58.0%	52.3%	50.7%
Fall 2007	71.2%	57.7%	50.5%	46.7%	Fall 2020	56.0%	44.6%	40.6%	37.8%
Fall 2008	71.8%	56.8%	49.1%	45.8%	Fall 2021	59.1%	48.2%	43.3%	40.0%
Fall 2009	68.1%	52.0%	45.3%	41.1%	Fall 2022	67.5%	55.9%		
Fall 2010	67.0%	51.5%	43.9%	41.0%	Fall 2023	71.9%			

Source: USG Retention Reports, 1998-2023.

Analysis by VSU SRA, 2025.

The official retention rates track first-time, full-time freshman students.



Source: USG Retention Reports, 1998-2023. Analysis by VSU SRA, 2025.

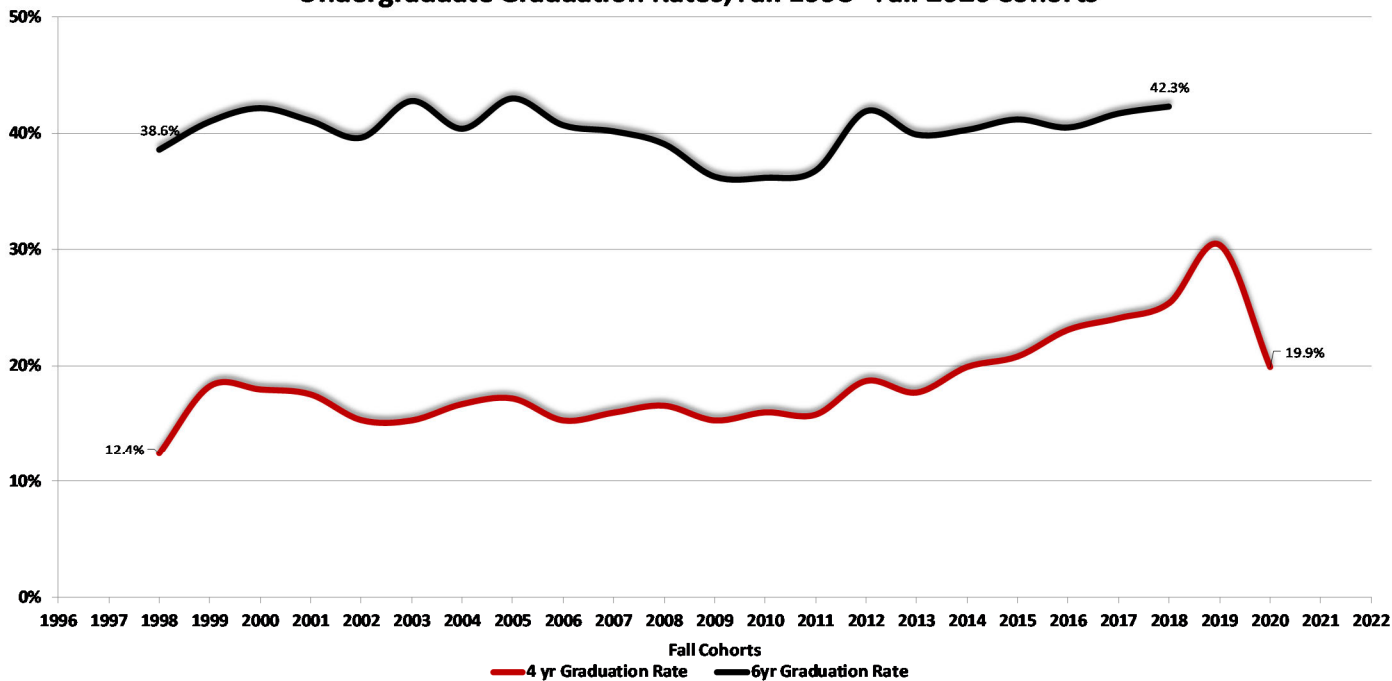
Undergraduate Graduation Rates

Cohort	4 yr Graduation Rate	6 yr Graduation Rate	Cohort	4 yr Graduation Rate	6 yr Graduation Rate
Fall 1998	12.4%	38.6%	Fall 2010	16.0%	36.2%
Fall 1999	18.2%	41.0%	Fall 2011	15.8%	36.8%
Fall 2000	18.0%	42.2%	Fall 2012	18.7%	41.9%
Fall 2001	17.5%	41.1%	Fall 2013	17.7%	39.9%
Fall 2002	15.3%	39.6%	Fall 2014	19.9%	40.3%
Fall 2003	15.3%	42.8%	Fall 2015	20.8%	20.8%
Fall 2004	16.7%	40.4%	Fall 2016	23.1%	40.5%
Fall 2005	17.2%	43.0%	Fall 2017	24.1%	41.7%
Fall 2006	15.3%	40.7%	Fall 2018	25.4%	42.3%
Fall 2007	16.0%	40.2%	Fall 2019	30.4%	
Fall 2008	16.6%	39.1%	Fall 2020	19.9%	
Fall 2009	15.3%	36.3%			

Source: USG Graduation Reports, 1998-2020. Analysis by VSU SRA, 2025.

The official graduation rates track first-time, full-time freshman students.

Undergraduate Graduation Rates, Fall 1998 - Fall 2020 Cohorts



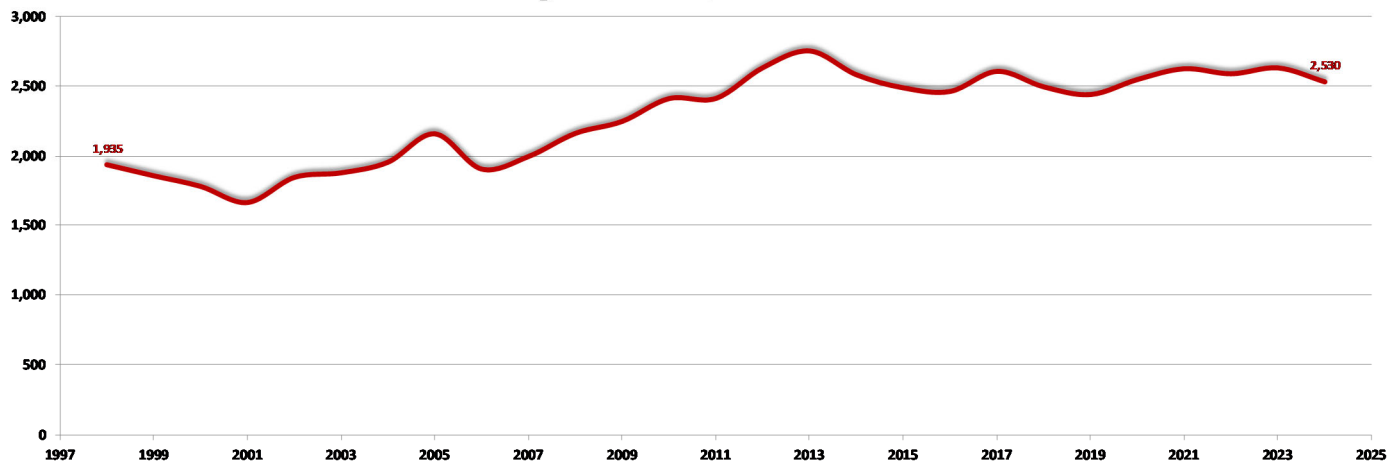
Source: USG Graduation Reports, 1998-2020. Analysis by VSU SRA, 2025.

Degrees Conferred

Fiscal Year	Degrees Conferred	Fiscal Year	Degrees Conferred
FY1998	1,935	FY2012	2,631
FY1999	1,856	FY2013	2,752
FY2000	1,780	FY2014	2,581
FY2001	1,664	FY2015	2,487
FY2002	1,844	FY2016	2,461
FY2003	1,877	FY2017	2,605
FY2004	1,953	FY2018	2,494
FY2005	2,157	FY2019	2,439
FY2006	1,904	FY2020	2,547
FY2007	1,994	FY2021	2,624
FY2008	2,160	FY2022	2,588
FY2009	2,246	FY2023	2,630
FY2010	2,410	FY2024	2,530

Source: USG Degrees Conferred Reports, FY1998-FY2024.

Degrees Conferred, FY1998 - FY2024



Source: USG Degrees Conferred Reports, FY1998-FY2024. Analysis by VSU SRA, 2025.



Student Information



Highest Enrollment Majors

- 1. Elementary Education
- 2. Nursing
- 3. Psychology
- 4. Biology
- 5. Management
- 6. Library & Information Science
- 7. Health Science
- 8. Criminal Justice
- 9. Organizational Leadership
- 10. Accounting

Our Enrollment

Undergraduate	7,206
Graduate	3,099
Female	69.2%
Minority Population	51.2%
Georgia Students	68.9%
Total Countries Represented	64
Countries Represented by Resident Students	38
Countries Represented by International Students.....	46

2024 Quick Facts Enrollment

10,305

Total Enrollment

1,132

New First-Time, Full-Time
Freshmen

548

New Undergraduate
Transfers

726

New Graduate Students



Fall Admissions Freshman Profile

as of August 2024

6,267

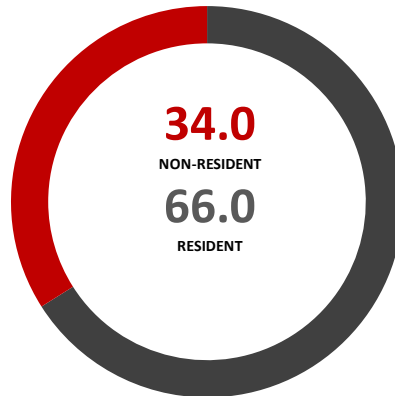
APPLICATIONS

4,521

ACCEPTED

1,132

ENROLLED



3.43

MEAN GPA

1019

MEAN SAT TOTAL

19

MEAN ACT COMPOSITE

Declared Majors

Accounting	Elementary Education	Management	Psychology
American Sign Language	Engineering Studies	Marketing	Secondary Education
Applied Economics	Engineering Technology	Mass Media	Sociology & Anthropology
Art	English	Mathematics	Spanish
Biology	Environmental Geosciences	Middle Grades Education	Theatre Arts
Chemistry	Exercise Physiology	Music	WGTC-Dental Hygiene (AAS)
Communication	Finance	Music Performance	Workforce Education & Development
Communication Disorders	General Business	Nursing	
Computer Information Systems	Health Science	Office Administration & Technology	
Computer Science	History	Physics	
Criminal Justice	Interdisciplinary Studies	Political Science	
Dance	Interior Design		

Regional Representation

- 72.8% of New Freshman are from Georgia
- Students came from 40 states and territories, and 9 countries

Demographics

70.5% Female, 29.5% Male

0.2% American Indian/Alaska Native

2.0% Asian

32.9% Black/African American

13.3% Hispanic

4.5% Multi-racial

0.1% Native Hawaiian/Pacific Islander

0.8% Unknown

46.2% White

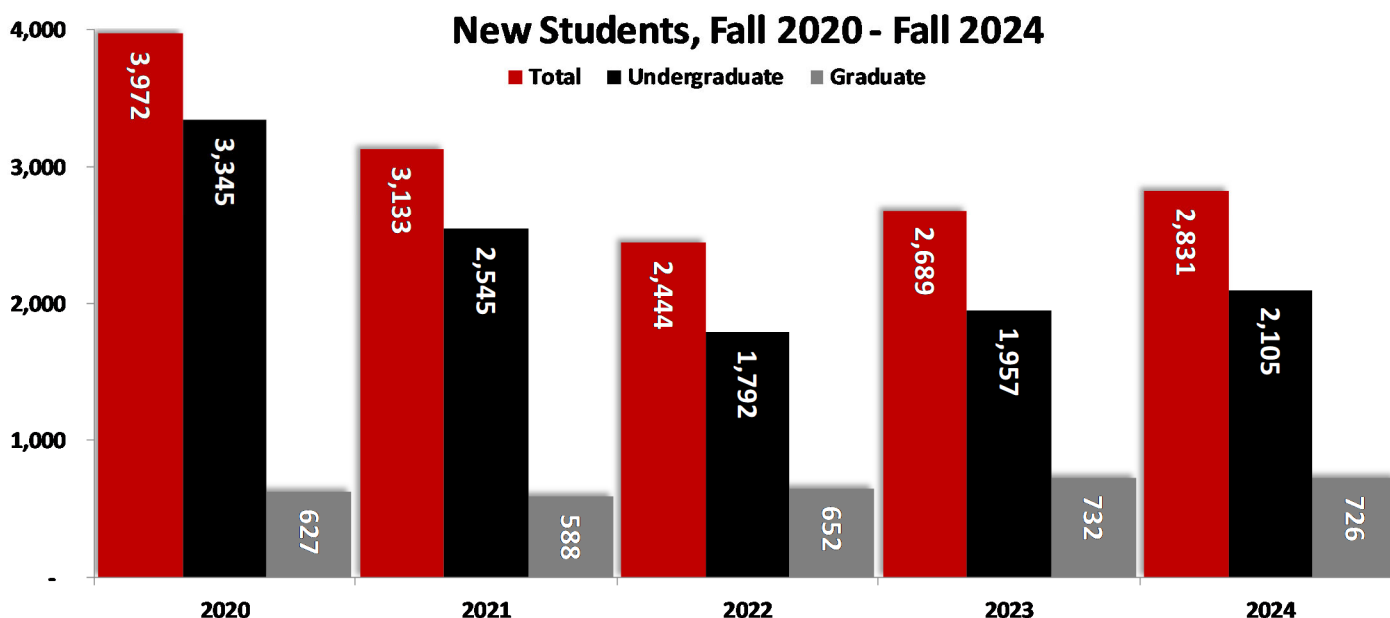
New Students Enrolled by Classification

Term	Fall 2020	Fall 2021	Fall 2022	Fall 2023	Fall 2024	% Change from 2020-2023	% Change from 2023-2024
Undergraduate							
New Freshman	2,557	1,711	1,096	1,092	1,132	-57.3%	3.7%
Other Freshman [†]	134	109	78	92	118	-31.3%	28.3%
Sophomore	262	224	189	220	214	-16.0%	-2.7%
Junior	219	216	180	201	162	-8.2%	-19.4%
Senior	29	39	41	53	54	82.8%	1.9%
Transient	5	19	31	23	18	360.0%	-21.7%
Dual Enrolled	103	203	150	249	371	141.7%	49.0%
All Others	36	24	27	27	36	-25.0%	33.3%
Undergraduate Total	3,345	2,545	1,792	1,957	2,105	-41.5%	7.6%
Graduate							
Post-baccalaureate	34	43	31	27	22	-20.6%	-18.5%
Masters	436	457	445	525	503	20.4%	-4.2%
Education Specialist	54	84	92	88	96	63.0%	9.1%
Doctorate	64	68	68	92	105	43.8%	14.1%
Graduate Total	627	588	652	732	726	16.7%	-0.8%
Grand Total	3,972	3,133	2,444	2,689	2,831	-32.3%	5.3%

[†]Other freshman include non-first-time freshman, such as transfer freshman.

Source: USG Semester Enrollment Reports, 2020-2024. USG Academic Data Mart, 2020-2024. Analysis by VSU SRA, 2025.

VSU's Fall 2024 new student enrollment increased 3.7% from the prior year.



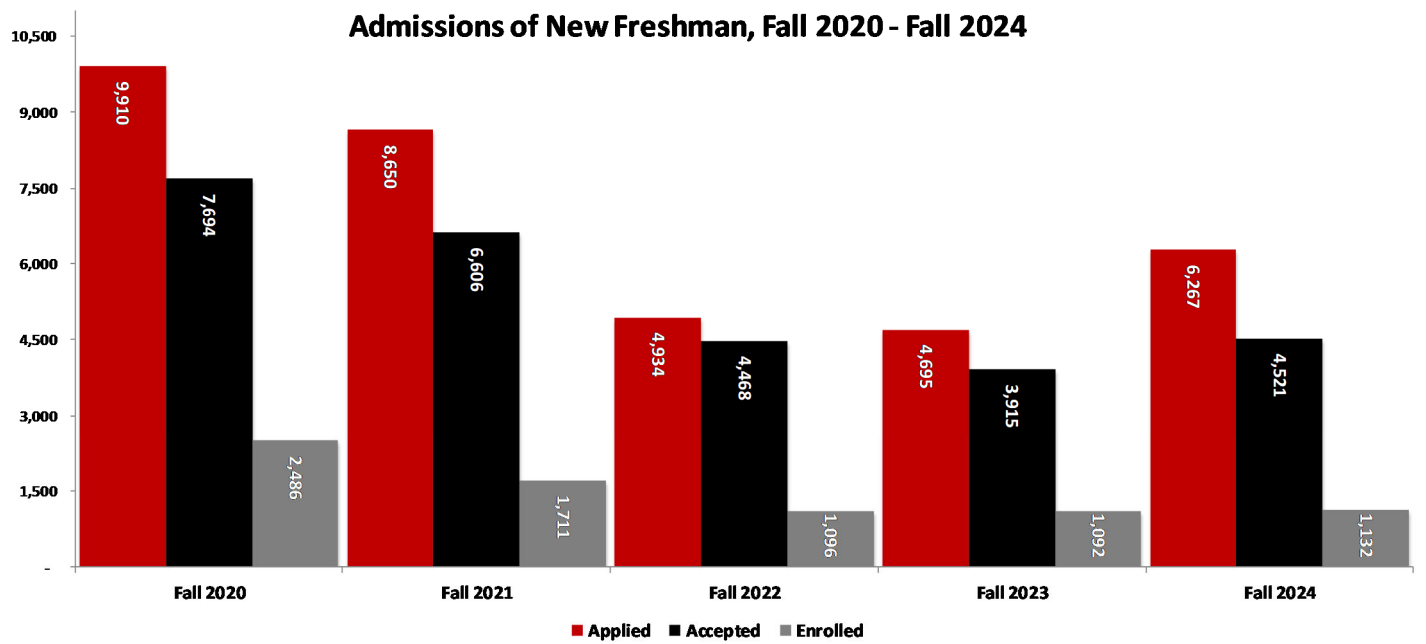
Source: USG Semester Enrollment Reports, 2020-2024. USG Academic Data Mart, 2020-2024. Analysis by VSU SRA, 2025.

Admissions of New Freshman

Term	Applied	Accepted	Enrolled	% of Applied Accepted	% of Accepted Enrolled
Fall 2020	9,910	7,694	2,486	77.6%	32.3%
Fall 2021	8,650	6,606	1,711	76.4%	25.9%
Fall 2022	4,934	4,468	1,096	90.6%	24.5%
Fall 2023	4,695	3,915	1,092	83.4%	27.9%
Fall 2024	6,267	4,521	1,132	72.1%	25.0%
% Change from 2020-2024	-36.8%	-41.2%	-54.5%	-5.5%	-7.3%

Note: New freshman counts for students who applied, were admitted, and enrolled for the respective fall term.

Source: Common Data Set. Analysis by VSU SRA, 2025.



Source: Common Data Set, Analysis by VSU SRA, 2025.

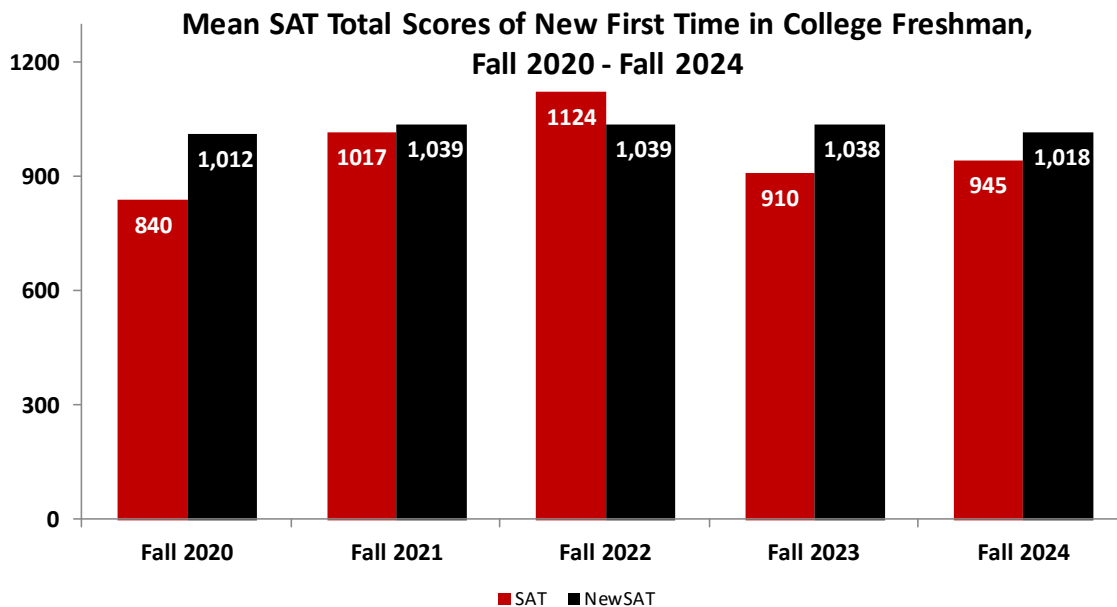
Mean SAT and ACT Scores of New First Time in College Freshman

Term	SAT				New SAT				ACT			
	Number of Scores [†]	Critical Reading	Math	Total	Number of Scores*	Math	Evidence Based Reading and Writing	Total	Number of Scores [†]	English	Math	Composite
Fall 2020	4	433	408	840	1488	488	524	1,012	798	18	18	19
Fall 2021	3	557	460	1017	318	502	537	1,039	211	20	19	20
Fall 2022	3	547	577	1124	617	502	536	1,039	315	20	19	20
Fall 2023	1	480	430	910	368	502	536	1,038	189	20	19	20
Fall 2024	2	445	500	945	354	490	528	1,018	155	18	18	19

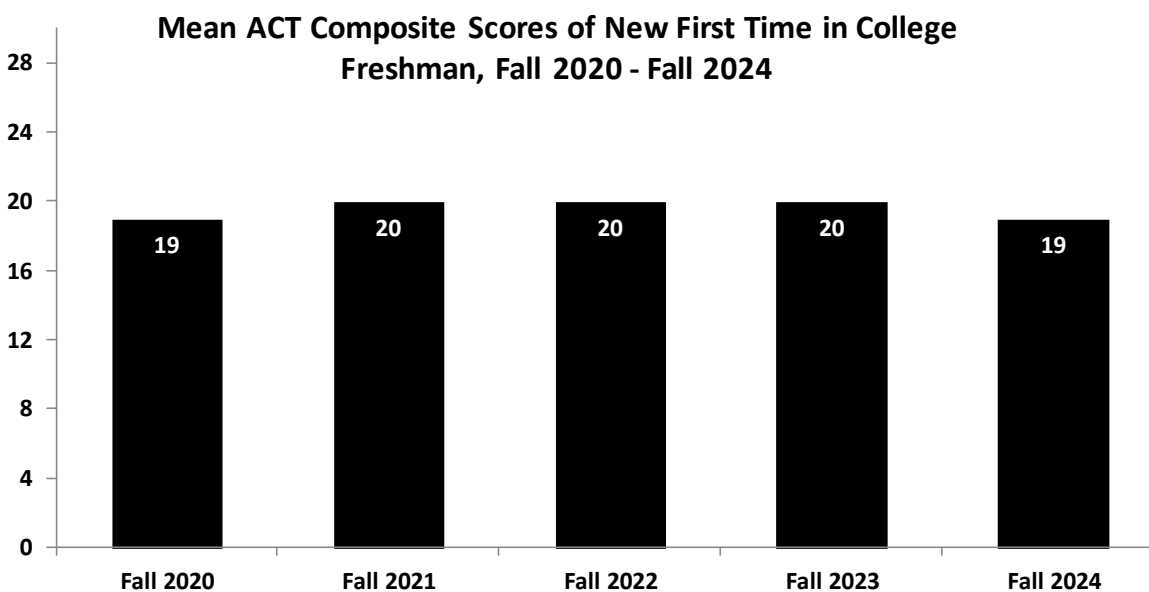
[†]The number of scores may not total the number of new freshman because students can submit both SAT and ACT scores to VSU.

A newly revised SAT test is in the process of implementation and has been included in the analysis.

Source: USG Academic Data Mart, 2020-2024. Analysis by VSU SRA, 2025.



Source: USG Academic Data Mart, 2020-2024. Analysis by VSU SRA, 2025.

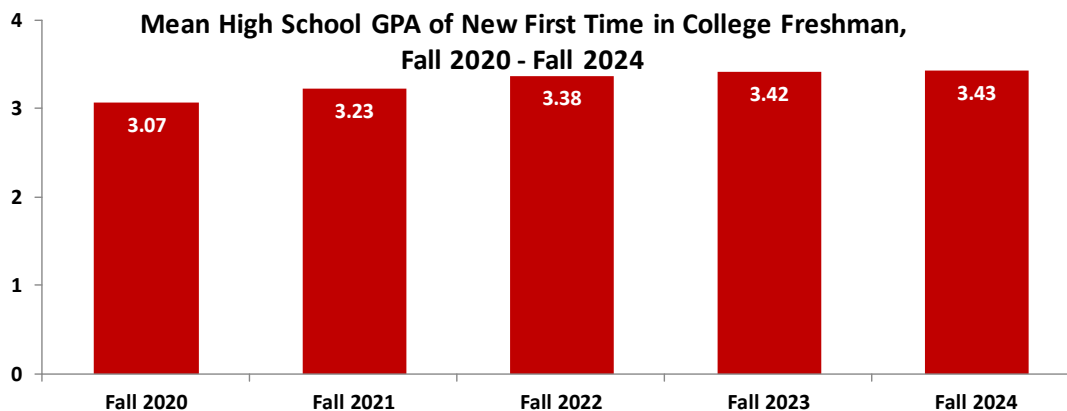


Source: USG Academic Data Mart, 2020-2024. Analysis by VSU SRA, 2025.

Mean High School Grade Point Average of New First Time in College Freshman

HS GPA	Fall 2020	Fall 2021	Fall 2022	Fall 2023	Fall 2024
Number	2,617	1,782	1,127	1,126	1,157
Mean	3.07	3.23	3.38	3.42	3.43

Source: USG Academic Data Mart, 2020-2024. Analysis by VSU SRA, 2025.

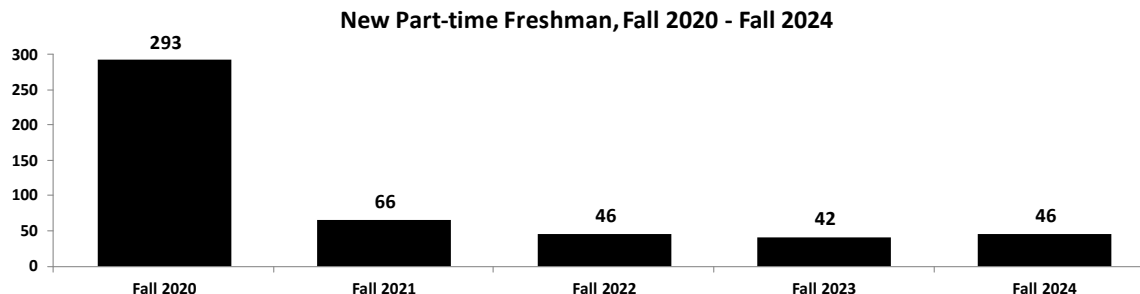
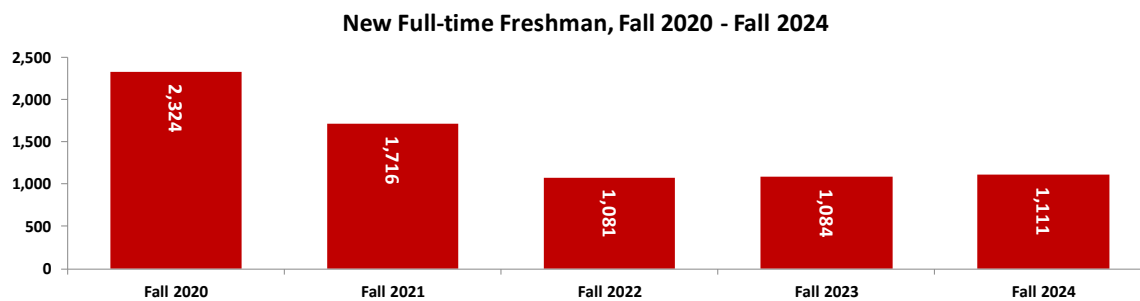


Source: USG Academic Data Mart, 2020-2024. Analysis by VSU SRA, 2025.

New First Time in College Freshman by Time Status

Time Status	Fall 2020	Fall 2021	Fall 2022	Fall 2023	Fall 2024	% Change from 2020-2024
Full-time	2,324	1,716	1,081	1,084	1,111	-52.2%
Part-time	293	66	46	42	46	-84.3%
Total	2,617	1,782	1,127	1,126	1,157	-55.8%
% Full-time	88.8%	96.3%	95.9%	96.3%	96.0%	
% Part-time	11.2%	3.7%	4.1%	3.7%	4.0%	

Source: USG Academic Data Mart, 2020-2024. Analysis by VSU SRA, 2025.

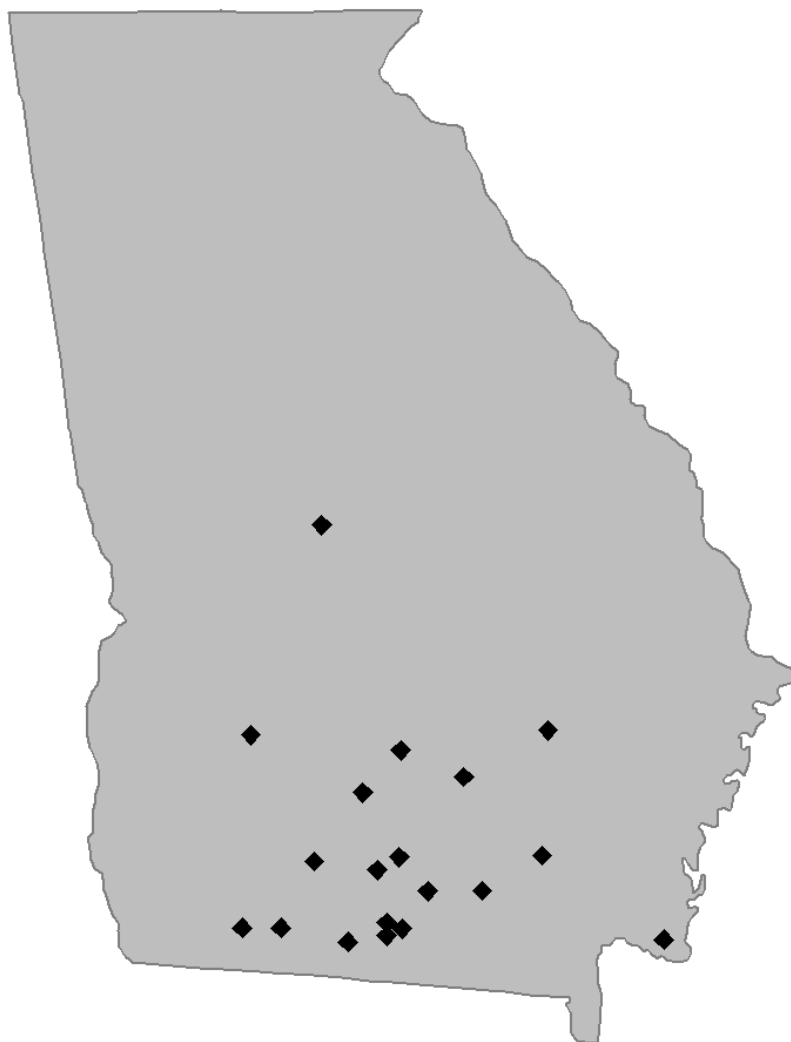


Source: USG Academic Data Mart, 2020-2024. Analysis by VSU SRA, 2025.

20 US High Schools with Highest Enrollment of VSU First Time in College Freshman Fall 2024

Name	Number	Name	Number
Lowndes High School	132	Appling County Comprehensive H	13
Colquitt County High School	56	Fitzgerald High School	13
Valdosta High School	50	Valwood School (The)	13
Cook High School	31	Tift County High School	11
Thomas County Central Hs	22	Brooks County High School	11
Lanier County High School	18	Veteran's High School	11
Cairo High School	16	Lee County High School	11
Ware County High School	16	Camden County High School	10
Coffee High School	16	Clinch County High School	10
Berrien County High School	15	Home School Transcript	10

Source: USG Academic Data Mart, 2024. Analysis by VSU SRA, 2025.



Source: USG Academic Data Mart, 2024. Analysis by VSU SRA, 2025.

Admissions of Transfer Students

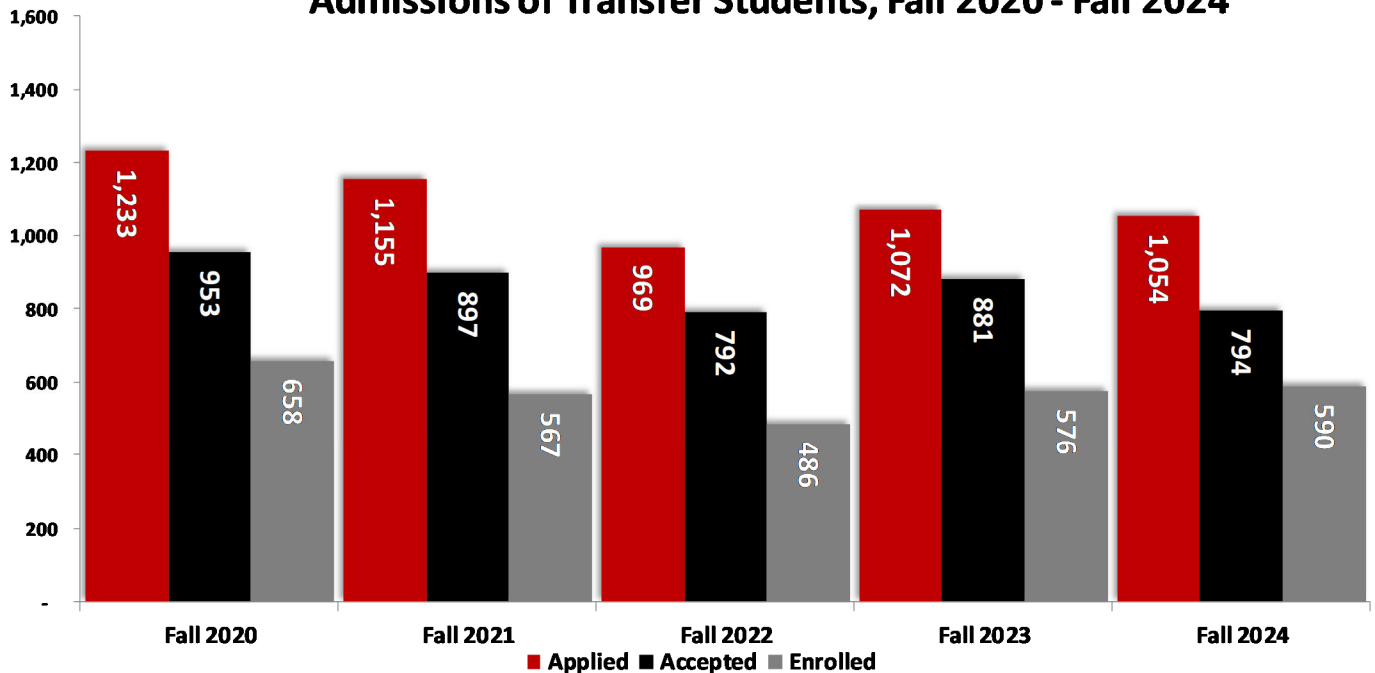
Term	Applied	Accepted	Enrolled	% of Applied Accepted	% of Accepted Enrolled
Fall 2020	1,233	953	658	77.3%	69.0%
Fall 2021	1,155	897	567	77.7%	63.2%
Fall 2022	969	792	486	81.7%	61.4%
Fall 2023	1,072	881	576	82.2%	65.4%
Fall 2024	1,054	794	590	75.3%	74.3%
% Change from 2020-2024	-14.5%	-16.7%	-10.3%	-2.5%	7.6%

Note: Transfers counts for students who applied, were admitted, and enrolled for the respective fall term.

Source: Common Data Set. Analysis by VSU SRA, 2025.

The number of enrolled transfer students at VSU increased by 2.4% from Fall 2023 to Fall 2024.

Admissions of Transfer Students, Fall 2020 - Fall 2024



Source: Common Data Set. Analysis by VSU SRA, 2025.

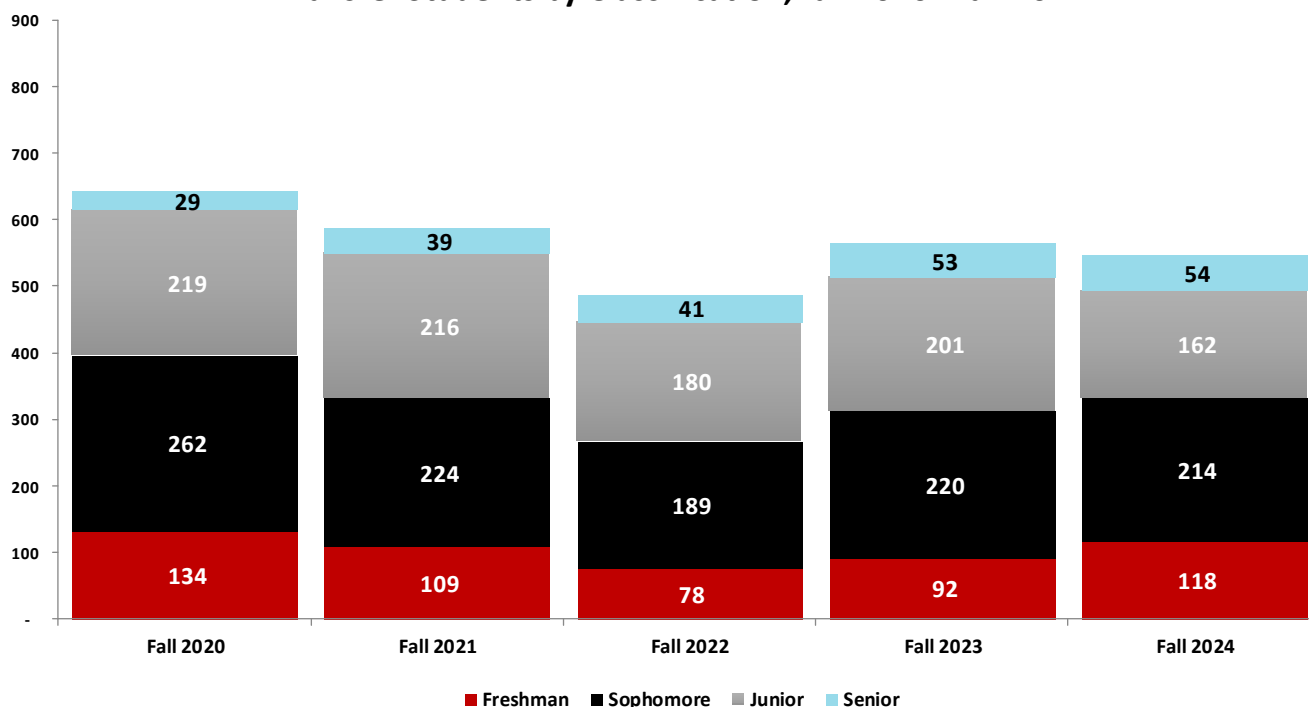
Transfer Students by Classification

Term	Freshman	Sophomore	Junior	Senior	Total
Fall 2020	134	262	219	29	644
Fall 2021	109	224	216	39	588
Fall 2022	78	189	180	41	488
Fall 2023	92	220	201	53	566
Fall 2024	118	214	162	54	548
% Change from 2020-2024	-11.9%	-18.3%	-26.0%	86.2%	-14.9%

Source: USG Semester Enrollment Reports, 2020-2024. Analysis by VSU SRA, 2025.

**Sophomores and Juniors
comprised 68.6% of the
transfer students
in Fall 2024.**

Transfer Students by Classification, Fall 2020 - Fall 2024



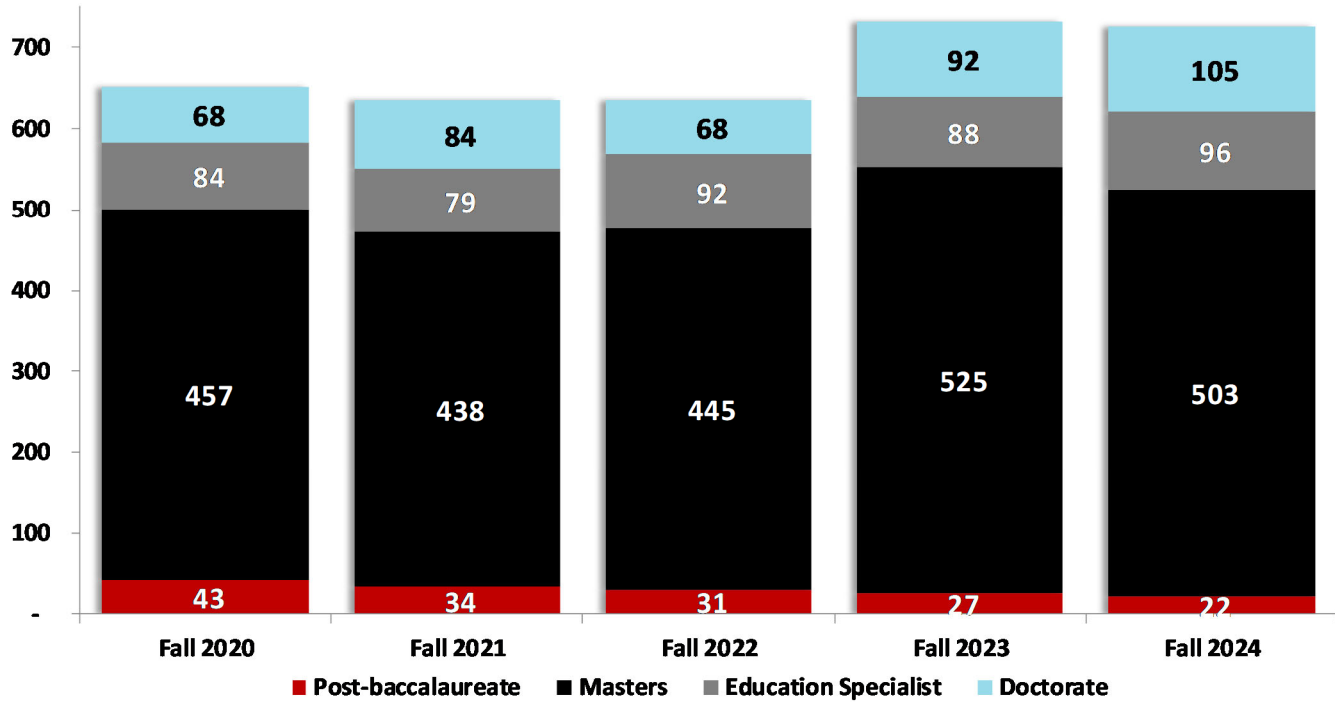
Source: USG Semester Enrollment Reports, 2020-2024. Analysis by VSU SRA, 2025.

New Graduate Students by Classification

Term	Post-baccalaureate	Masters	Education Specialist	Doctorate	Total
Fall 2020	43	457	84	68	652
Fall 2021	34	438	79	84	635
Fall 2022	31	445	92	68	636
Fall 2023	27	525	88	92	732
Fall 2024	22	503	96	105	726
% Change from 2020-2024	-48.8%	10.1%	14.3%	54.4%	11.3%

Source: USG Academic Data Mart, 2020-2024. Analysis by VSU SRA, 2025.

New Graduate Students by Classification, Fall 2020 - Fall 2024



Source: USG Academic Data Mart, 2020-2024. Analysis by VSU SRA, 2025.

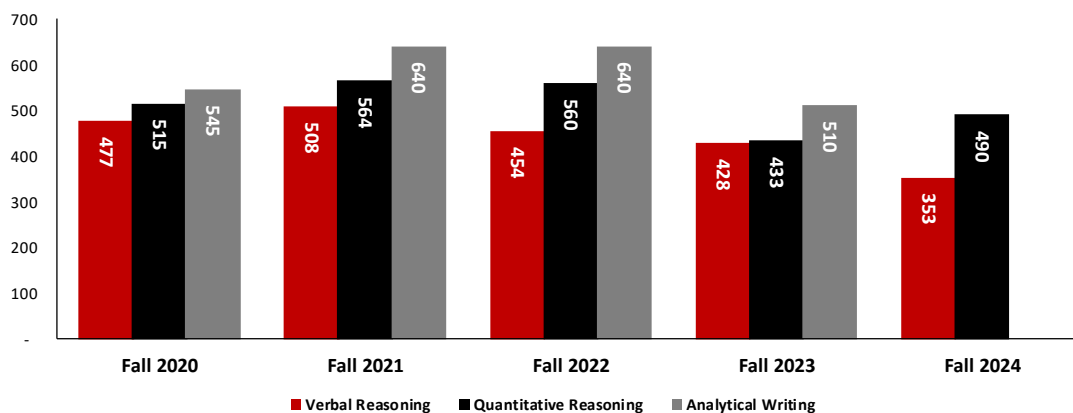
Mean GRE Scores of New Graduate Students

Term	Verbal Reasoning		Quantitative Reasoning		Analytical Writing	
	Number of Scores	Mean	Number of Scores	Mean	Number of Scores	Mean
Fall 2020	16	477	16	515	3	545
Fall 2021	10	508	10	564	3	640
Fall 2022	5	454	5	560	1	640
Fall 2023	9	428	9	433	3	510
Fall 2024	3	353	3	490	-	-

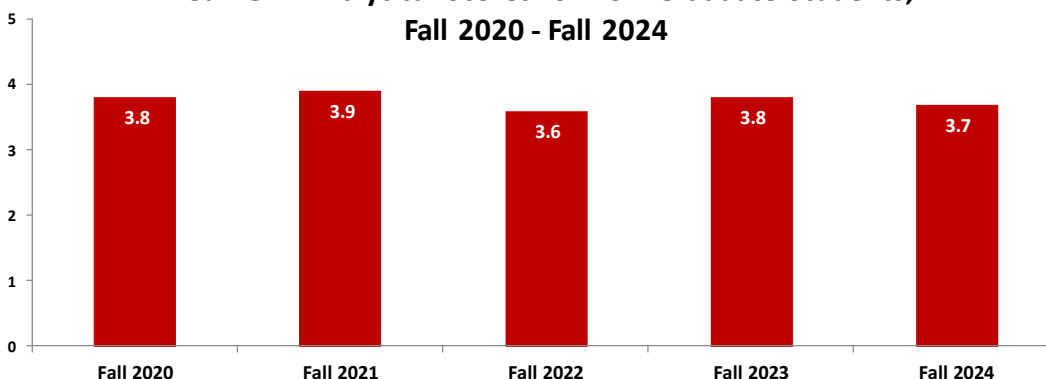
Term	Verbal Reasoning*		Quantitative Reasoning*		Analytical Writing*	
	Number of Scores	Mean	Number of Scores	Mean	Number of Scores	Mean
Fall 2020	78	151	78	147	78	3.8
Fall 2021	13	146	13	153	3	3.9
Fall 2022	5	148	5	146	1	3.6
Fall 2023	9	148	9	145	3	3.8
Fall 2024	4	149	4	152	1	3.7

*Note: In 2011, the GRE Verbal Reasoning Score and GRE Quantitative Reasoning Score were changed from a 200-800 scale to a 130-170 scale. In 2005, the GRE Analytical Writing Score was changed from a 200-800 scale to 0-6 scale. Source: USG Academic Data Mart, 2020-2024. Analysis by VSU SRA, 2025.

Mean GRE Scores of New Graduate Students, Fall 2020 - Fall 2024



Mean GRE Analytical Scores[†] of New Graduate Students, Fall 2020 - Fall 2024

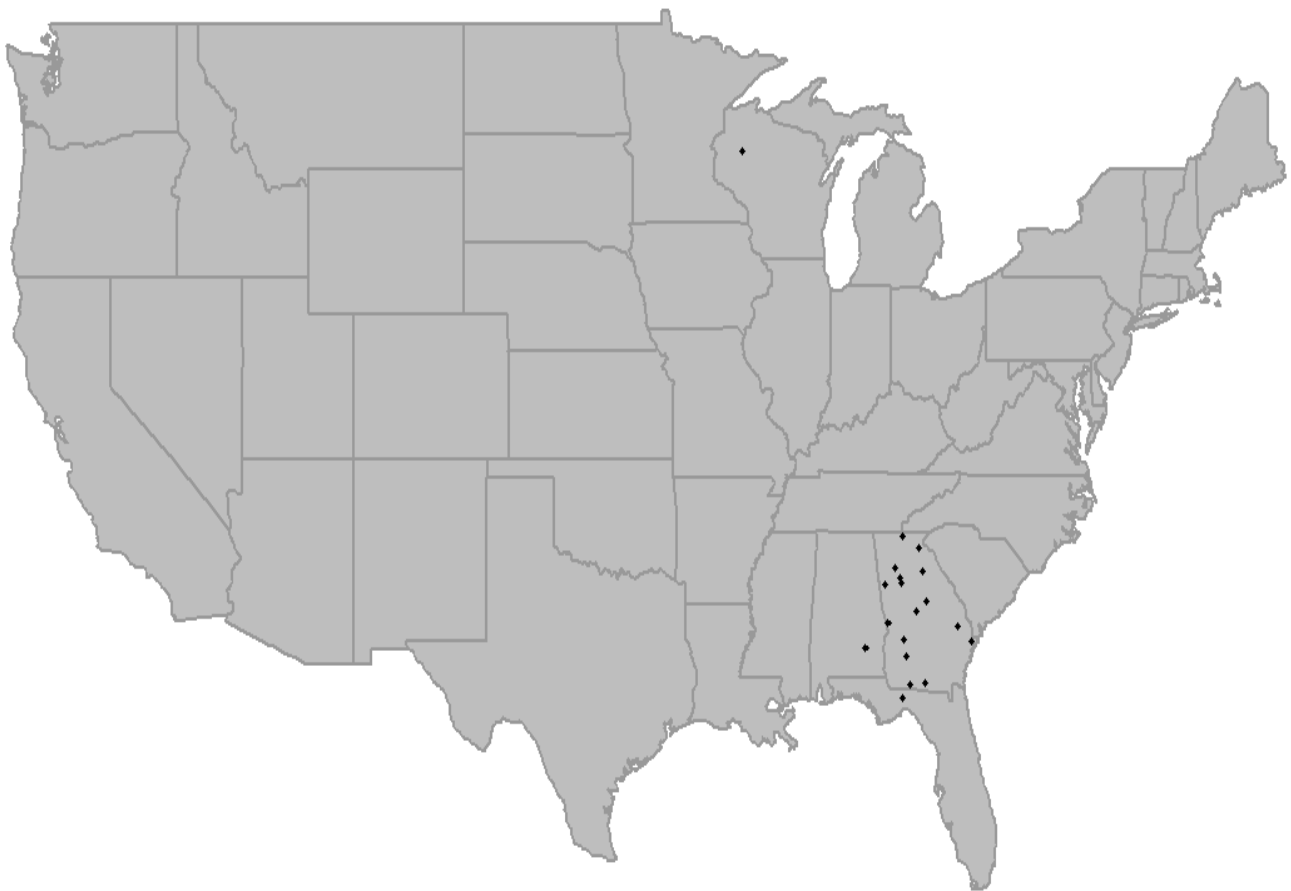


Sources: USG Academic Data Mart, 2020-2024. Analysis by VSU SRA, 2025.

Top 20 Previous Institutions of New Graduate Students, Fall 2024

Institution	Number	Institution	Number
Valdosta State University	367	Armstrong State University	8
Georgia Southern University	21	University of West Georgia	8
Georgia Southern College	21	Troy State University - Troy	7
University of Georgia	20	Florida State University	6
Albany State University	16	Univ of North Georgia	5
Georgia State University	13	Mercer University - Macon	5
Georgia Coll & State Univ	11	Wisconsin Indianhead Technical	5
Kennesaw State University	10	Clayton State University	4
Columbus State University	9	Thomas University	4
Georgia Southwestern State	8	Piedmont College	4

Source: VSU SRA Analysis of USG Academic Data Mart, 2025.



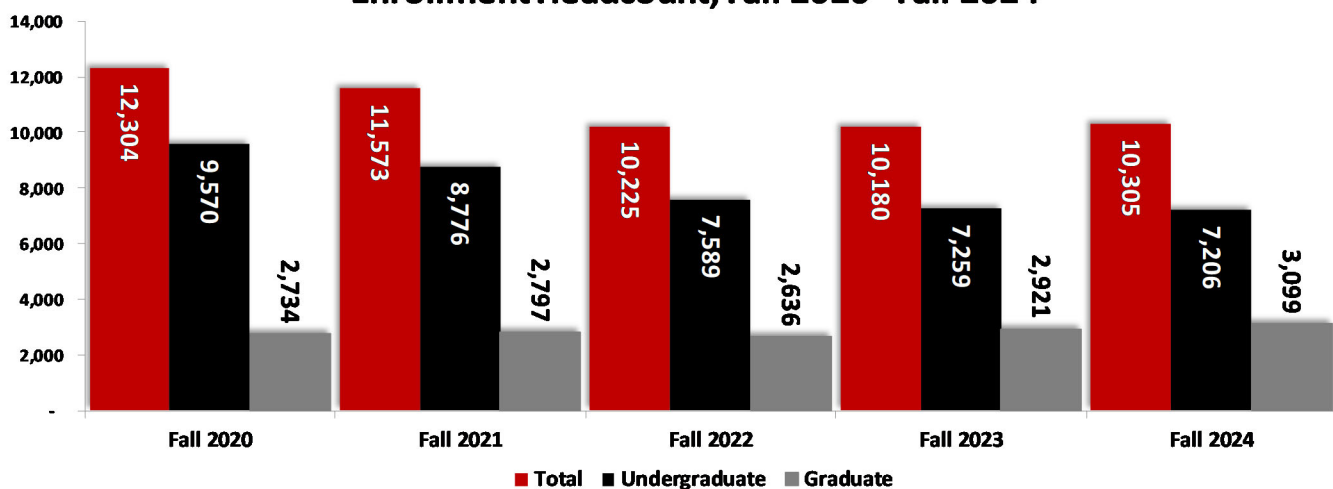
Source: VSU SRA Analysis of USG Academic Data Mart, 2025.

Total Enrollment and Full-time Equivalent Enrollment

Term	Enrollment			Full-time Equivalent		
	Undergraduate	Graduate	Total	Undergraduate	Graduate	Total
Fall 2020	9,570	2,734	12,304	8,715	1,917	10,632
Fall 2021	8,776	2,797	11,573	7,905	1,949	9,854
Fall 2022	7,589	2,636	10,225	6,844	1,812	8,656
Fall 2023	7,259	2,921	10,180	6,490	2,057	8,547
Fall 2024	7,206	3,099	10,305	6,371	2,260	8,631
% Change from 2020-2024	-24.7%	13.4%	-16.2%	-26.9%	17.9%	-18.8%

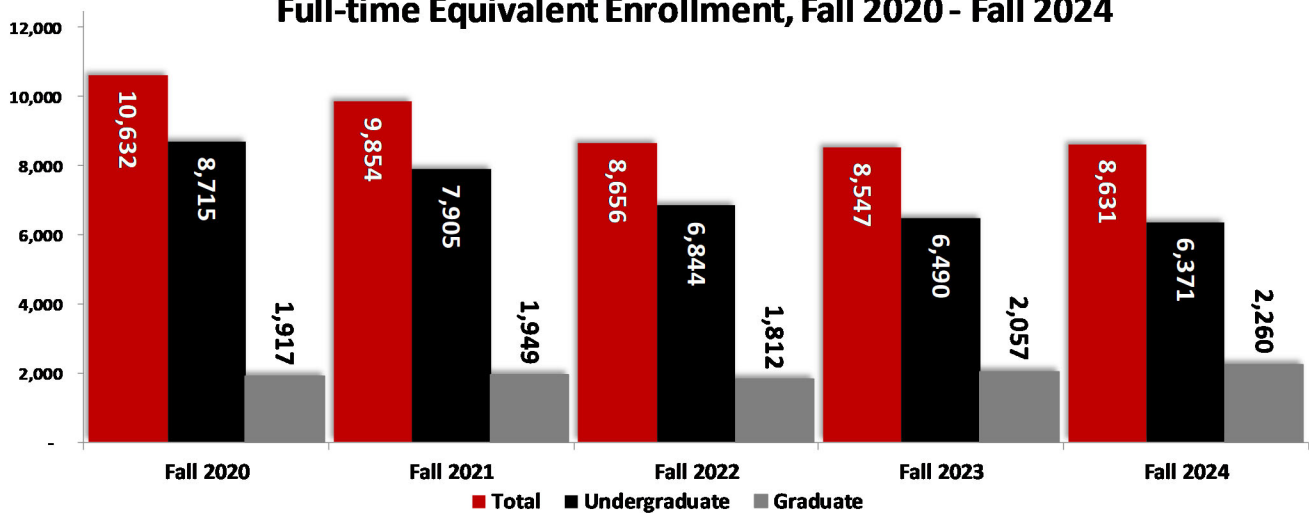
Source: USG Enrollment Reports, 2020-2024. USG Academic Data Mart, 2020-2024. Analysis by VSU SRA, 2025.

Enrollment Headcount, Fall 2020 - Fall 2024



Source: USG Enrollment Reports, 2020-2024. USG Academic Data Mart, 2020-2024. Analysis by VSU SRA, 2025.

Full-time Equivalent Enrollment, Fall 2020 - Fall 2024



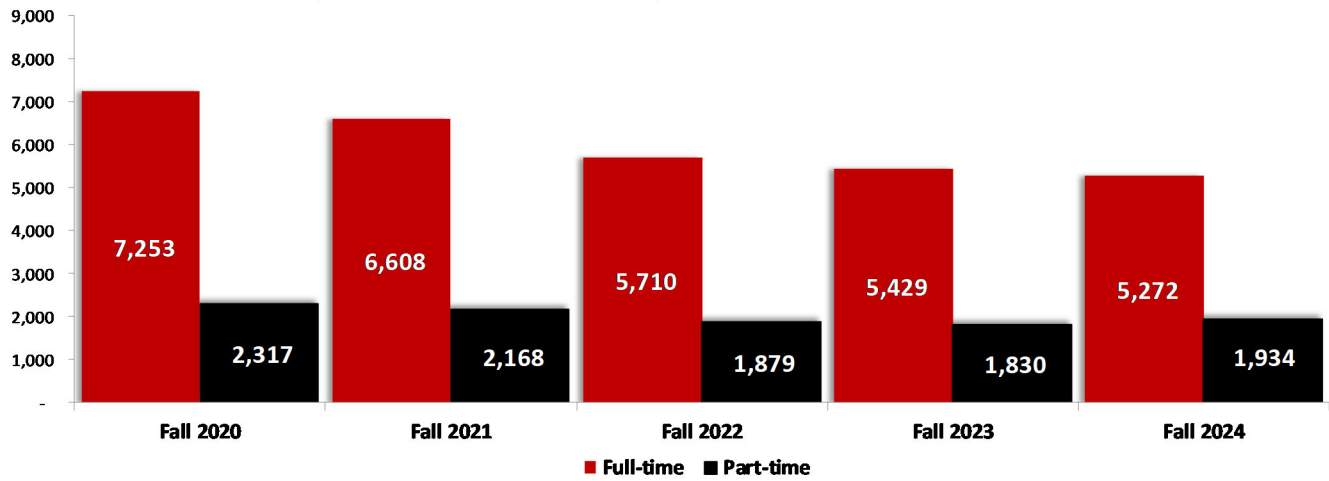
Source: USG Enrollment Reports, 2020-2024. USG Academic Data Mart, 2020-2024. Analysis by VSU SRA, 2025.

Enrollment by Time Status

Term	Undergraduate			Graduate			Total		
	Full-time	Part-time	Total	Full-time	Part-time	Total	Full-time	Part-time	Total
Fall 2020	7,253	2,317	9,570	889	1,845	2,734	8,142	4,162	12,304
Fall 2021	6,608	2,168	8,776	872	1,925	2,797	7,480	4,093	11,573
Fall 2022	5,710	1,879	7,589	773	1,863	2,636	6,483	3,742	10,225
Fall 2023	5,429	1,830	7,259	907	2,014	2,921	6,336	3,844	10,180
Fall 2024	5,272	1,934	7,206	1,114	1,985	3,099	6,386	3,919	10,305
% Change from 2020-2024	-27.3%	-16.5%	-24.7%	25.3%	7.6%	13.4%	-21.6%	-5.8%	-16.2%

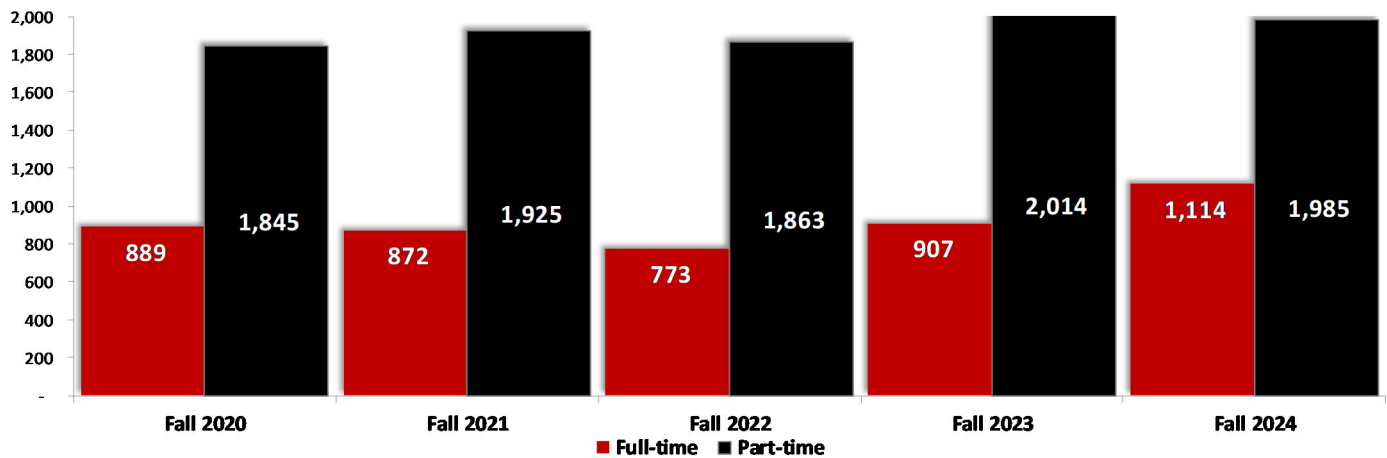
Source: USG Academic Data Mart, 2020-2024. Analysis by VSU SRA, 2025.

Undergraduate Enrollment by Time Status, Fall 2020 - Fall 2024



Source: VSU SRA Analysis of USG Academic Data Mart, 2020-2024. Analysis by VSU SRA, 2025.

Graduate Enrollment by Time Status, Fall 2020 - Fall 2024



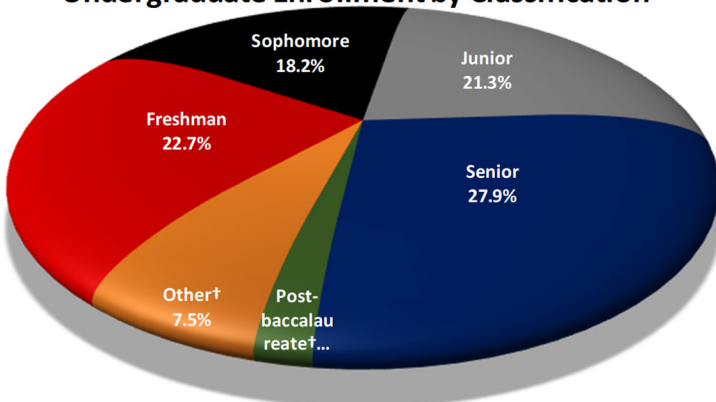
Source: VSU SRA Analysis of USG Academic Data Mart, 2020-2024. Analysis by VSU SRA, 2025.

Enrollment by Classification

Classification	Fall 2020	Fall 2021	Fall 2022	Fall 2023	Fall 2024	% Change from 2020-2024
Undergraduate						
Freshman	3,264	2,651	1,792	1,599	1,639	-49.8%
Sophomore	1,769	1,667	1,575	1,436	1,313	-25.8%
Junior	2,029	1,815	1,682	1,696	1,538	-24.2%
Senior	2,156	2,164	2,093	2,011	2,011	-6.7%
Transient	8	25	35	27	23	187.5%
Joint Enrolled	181	306	250	343	518	186.2%
Other	-	-	-	-	-	-
Post-baccalaureate	163	148	162	147	164	0.6%
Undergraduate Total	9,570	8,776	7,589	7,259	7,206	75.3%
Graduate						
Post-baccalaureate	141	136	118	109	84	-40.4%
Masters	1,759	1,728	1,638	1,868	1,994	13.4%
Education Specialist	366	444	426	482	539	47.3%
Doctorate	468	489	454	462	482	3.0%
Graduate Total	2,734	2,797	2,636	2,921	3,099	13.4%
Grand Total	12,304	11,573	10,225	10,180	10,305	-16.2%

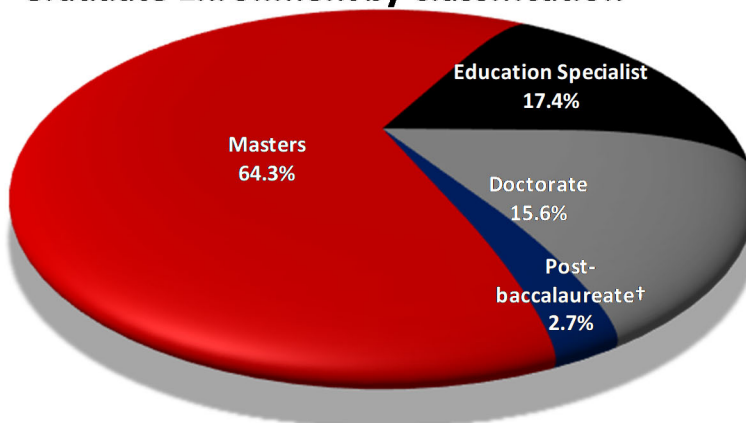
Source: USG Academic Data Mart, 2020-2024. Analysis by VSU SRA, 2025.

Undergraduate Enrollment by Classification



Undergraduates comprised 69.9% of VSU's total enrollment for Fall 2024.

Graduate Enrollment by Classification



†Other includes students who were classified as transient, joint enrolled, and other.

Source: USG Academic Data Mart, 2024. Analysis by VSU SRA, 2025.

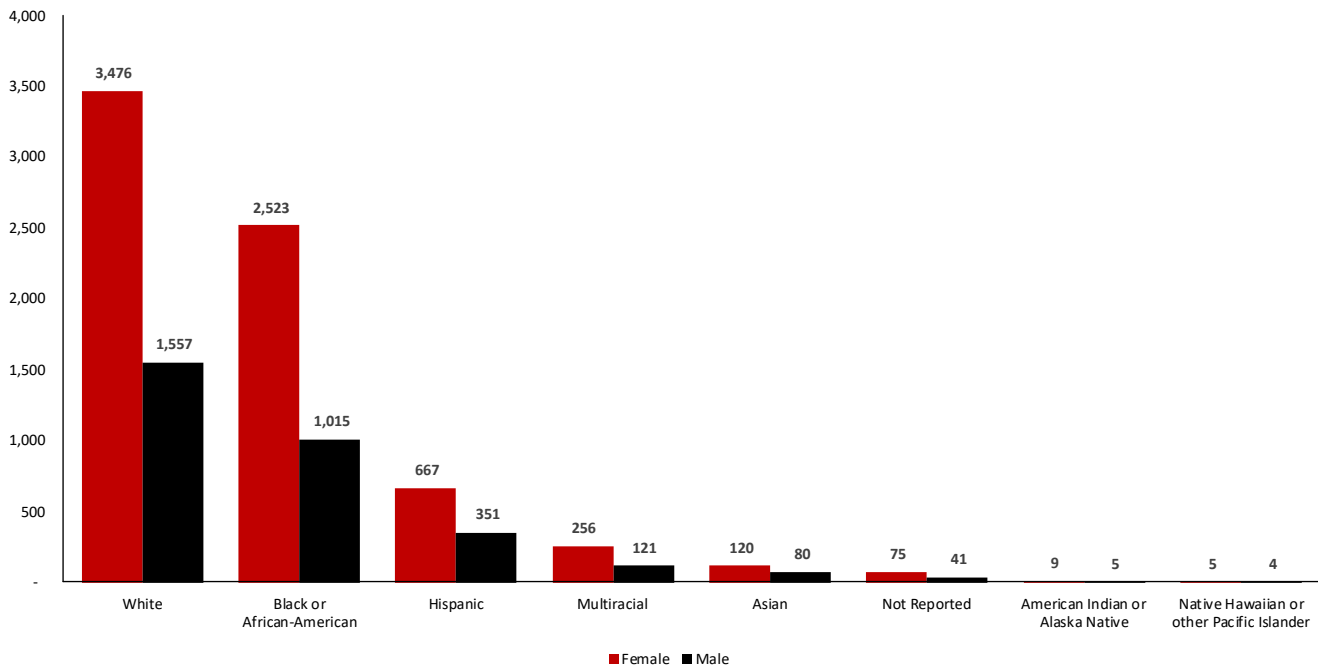
Enrollment by Ethnicity and Gender

Gender/Ethnicity	Fall 2020	Fall 2021	Fall 2022	Fall 2023	Fall 2024	% Change from 2020-2024
Gender						
Male	3,748	3,924	3,591	3,188	3,174	-15.3%
Female	7,522	8,380	7,982	7,037	7,131	-5.2%
Total	11,270	12,304	11,573	10,225	10,305	-8.6%
Ethnicity and Gender						
Black or African American Male	1,275	1,431	1,073	1,028	1,015	-20.4%
Black or African American Female	2,734	3,252	2,478	2,440	2,523	-7.7%
White or Caucasian Male	1,885	1,870	1,580	1,560	1,557	-17.4%
White or Caucasian Female	3,821	3,937	3,472	3,485	3,476	-9.0%
All Other Male	588	623	535	574	602	2.4%
All Other Female	967	1,191	1,087	1,093	1,132	17.1%
Total	11,270	12,304	10,225	10,180	10,305	-8.6%

Source: USG Academic Data Mart, 2020-2024. Analysis by VSU SRA, 2025.

Females comprised 69.2% of VSU's total enrollment for Fall 2024.

Enrollment by Ethnicity and Gender, Fall 2024



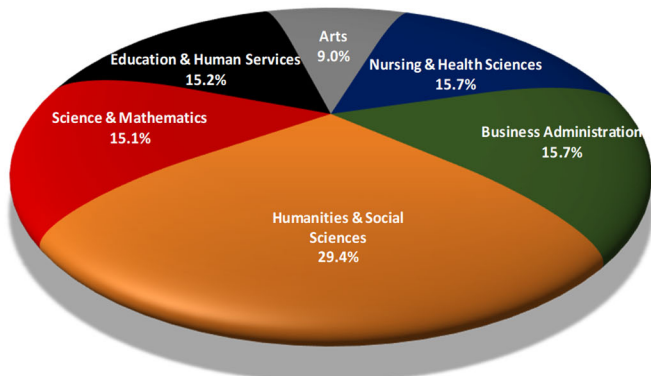
Source: USG Academic Data Mart, 2024. Analysis by VSU SRA, 2025.

Enrollment by College

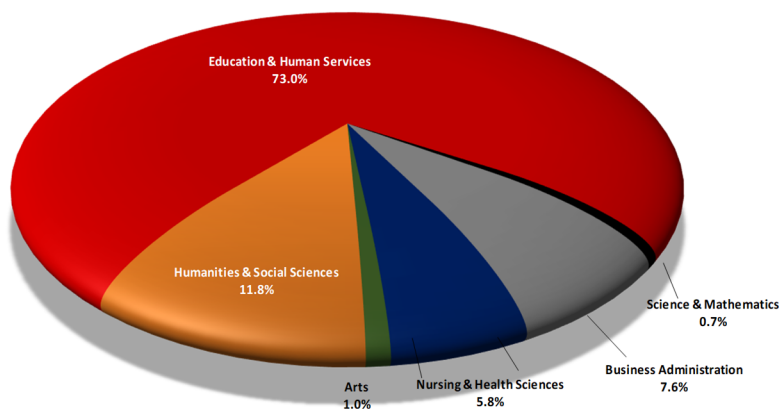
College/Division	Fall 2020	Fall 2021	Fall 2022	Fall 2023	Fall 2024	% Change from 2020-2024
Undergraduate						
Arts	1,043	860	729	667	645	-38.2%
Science & Mathematics	1441	1,277	1,109	1,111	1,089	-24.4%
Business Administration	1,578	1,450	1,295	1,224	1,130	-28.4%
Education & Human Services	1,098	973	928	987	1,097	-0.1%
Nursing & Health Sciences	1,791	1,638	1,339	1,192	1,129	-37.0%
Humanities & Social Sciences	2,619	2,578	2,189	2,078	2,116	-19.2%
Undergraduate Total	9,570	8,776	7,589	7,259	7,206	-24.7%
Graduate						
Arts	39	48	56	41	31	-20.5%
Science & Mathematics	12	10	8	21	22	83.3%
Business Administration	97	151	168	202	237	144.3%
Education & Human Services	2,087	2,099	1,935	2,153	2,262	8.4%
Nursing & Health Sciences	120	118	112	127	180	50.0%
Humanities & Social Sciences	379	371	357	377	367	-3.2%
Graduate Total	2,734	2,797	2,636	2,921	3,099	13.4%
Grand Total	12,304	11,573	10,225	10,180	10,305	-16.2%

Note: In Fall 2013, College of Nursing was changed to College of Nursing & Health Sciences, and College of Education was changed to College of Education & Human Services. In Fall 2013, Social Work was combined into College of Education & Human Services. In Fall 2014, MLIS was combined into College of Education & Human Services. Fall 2006-Fall 2013 enrollment for Social Work and MLIS have been combined into Education & Human Services. For 2018, the College of Arts and Sciences was split, resulting in the formation of the College of Science & Mathematics and the College of Humanities & Social Sciences. Source: USG Academic Data Mart, 2020-2024. Analysis by VSU SRA, 2025.

Undergraduate Enrollment by College, Fall 2024



Graduate Enrollment by College, Fall 2024



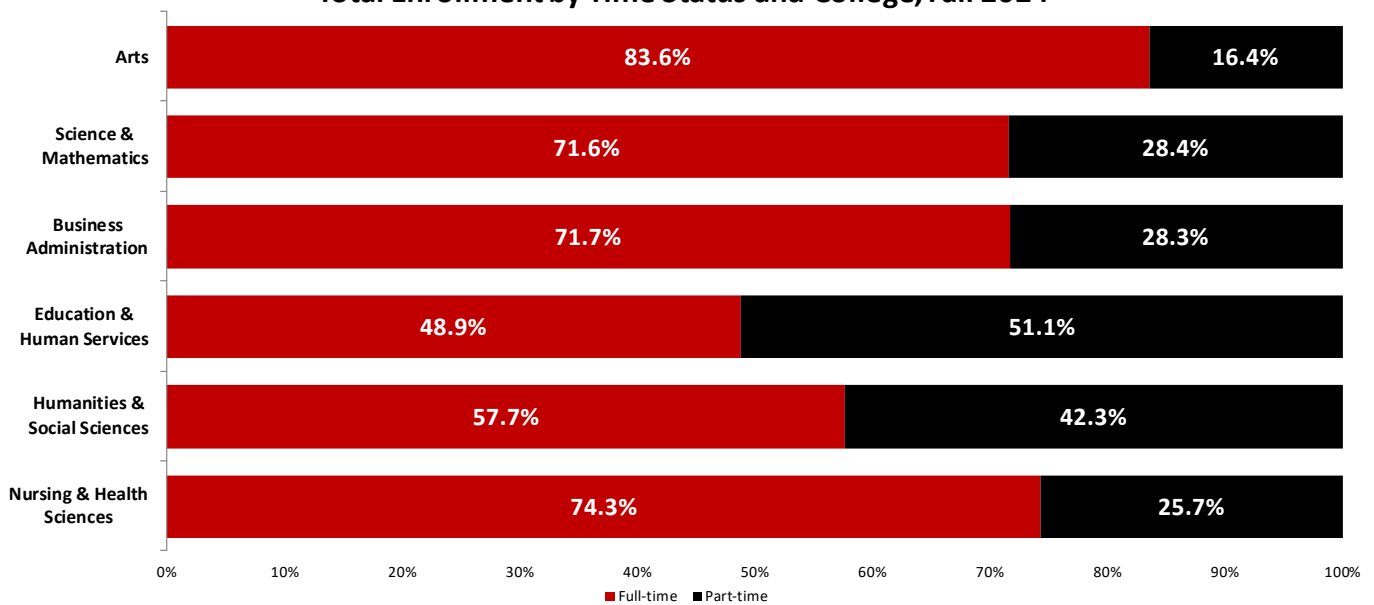
Source: USG Academic Data Mart, 2020-2024. Analysis by VSU SRA, 2025.

Enrollment by Time Status, Classification, and College, Fall 2024

College/Division	Undergraduates			Graduates			Total		
	Full-time	Part-time	Total	Full-time	Part-time	Total	Full-time	Part-time	Total
Arts	542	103	645	23	8	31	565	111	676
Science & Mathematics	786	303	1,089	9	13	22	795	316	1,111
Business Administration	856	274	1,130	124	113	237	980	387	1,367
Education & Human Services	850	247	1,097	791	1,471	2,262	1,641	1,718	3,359
Humanities & Social Sciences	1,356	760	2,116	76	291	367	1,432	1,051	2,483
Nursing & Health Sciences	882	247	1,129	91	89	180	973	336	1,309
Total	5,272	1,934	7,206	1,114	1,985	3,099	6,386	3,919	10,305

Source: USG Academic Data Mart, 2024. Analysis by VSU SRA, 2025.

Total Enrollment by Time Status and College, Fall 2024



Source: USG Academic Data Mart, 2024. Analysis by VSU SRA, 2025.

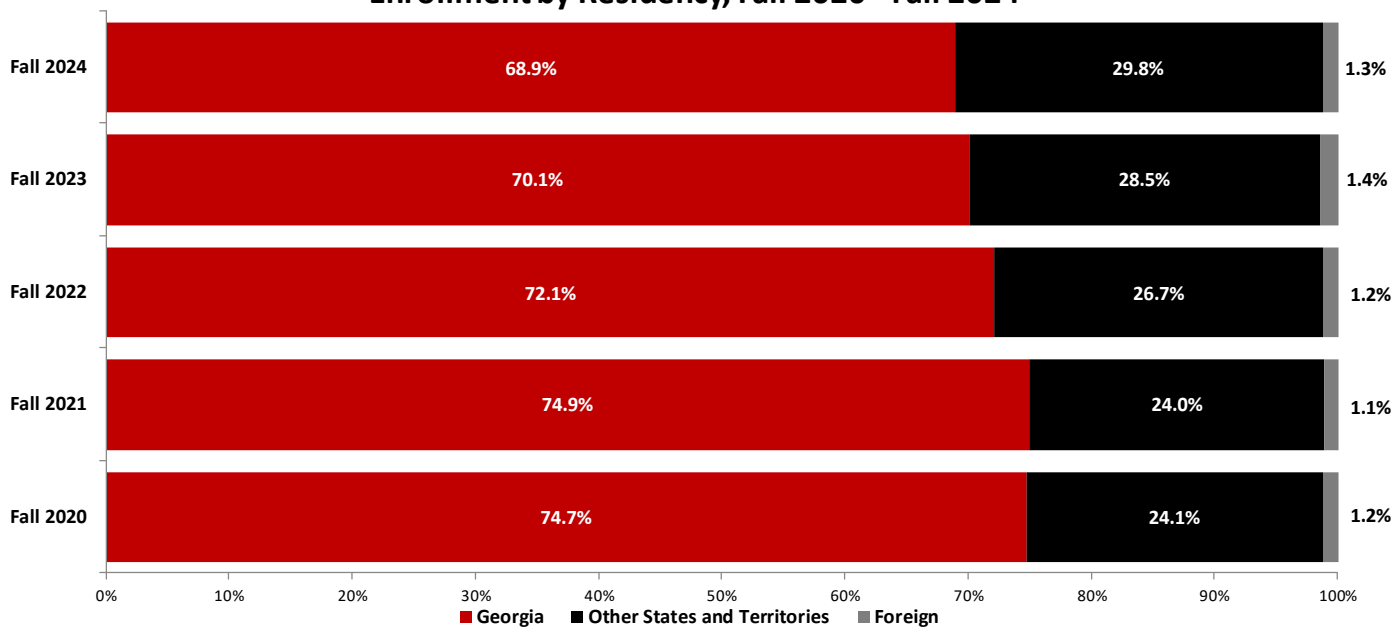
Enrollment by Residency

Residency	Fall 2020	Fall 2021	Fall 2022	Fall 2023	Fall 2024	% Change from 2020-2024
Georgia	9,195	8,667	7,372	7,136	7,103	-22.8%
Other States & Territories	2,961	2,779	2,727	2,901	3,070	3.7%
Foreign	148	127	126	143	132	-10.8%
Total	12,304	11,573	10,225	10,180	10,305	-16.2%

Source: USG Academic Data Mart, 2020-2024. Analysis by VSU SRA, 2025.

Georgia Residents comprise 68.9% of enrolled students.

Enrollment by Residency, Fall 2020 - Fall 2024



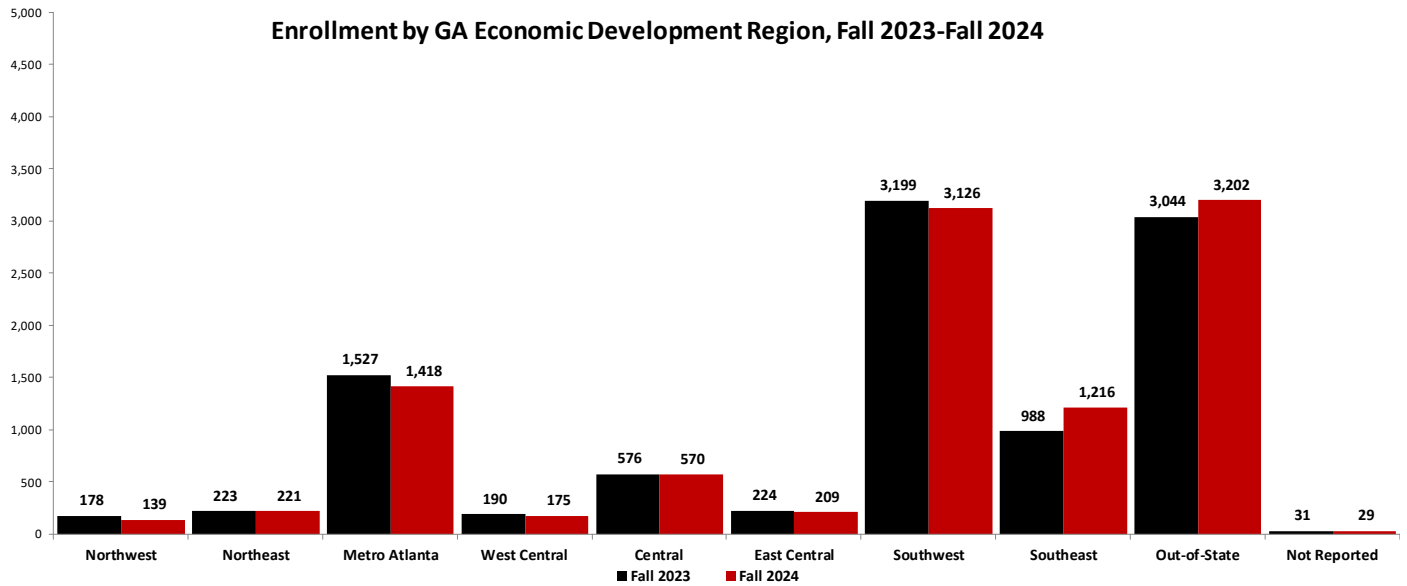
Source: USG Academic Data Mart, 2020-2024. Analysis by VSU SRA, 2025.

Enrollment by Georgia Economic Development Region

Region	Fall 2020	Fall 2021	Fall 2022	Fall 2023	Fall 2024	% Change from 2020-2024
Northwest	129	137	148	178	139	7.8%
Northeast	251	258	217	223	221	-12.0%
Metro Atlanta	2,581	2,225	1,775	1,527	1,418	-45.1%
West Central	291	266	215	190	175	-39.9%
Central	783	757	605	576	570	-27.2%
East Central	287	287	237	224	209	-27.2%
Southwest	3,637	3,567	3,133	3,199	3,126	-14.1%
Southeast	1,176	1,080	991	988	1,216	3.4%
Out-of-State	3,109	2,906	2,853	3,044	3,202	3.0%
Not Reported	60	90	51	31	29	-51.7%
Total	12,304	11,573	10,225	10,180	10,305	-16.2%

[†]Lowndes County is included in the Southwest Economic Development Region.

Source: VSU SRA Analysis of USG Academic Data Mart, 2020– 2024.



[†]Lowndes County is included in the Southwest Economic Development Region.

Source: USG Academic Data Mart, 2023-2024. Analysis by VSU SRA, 2025.

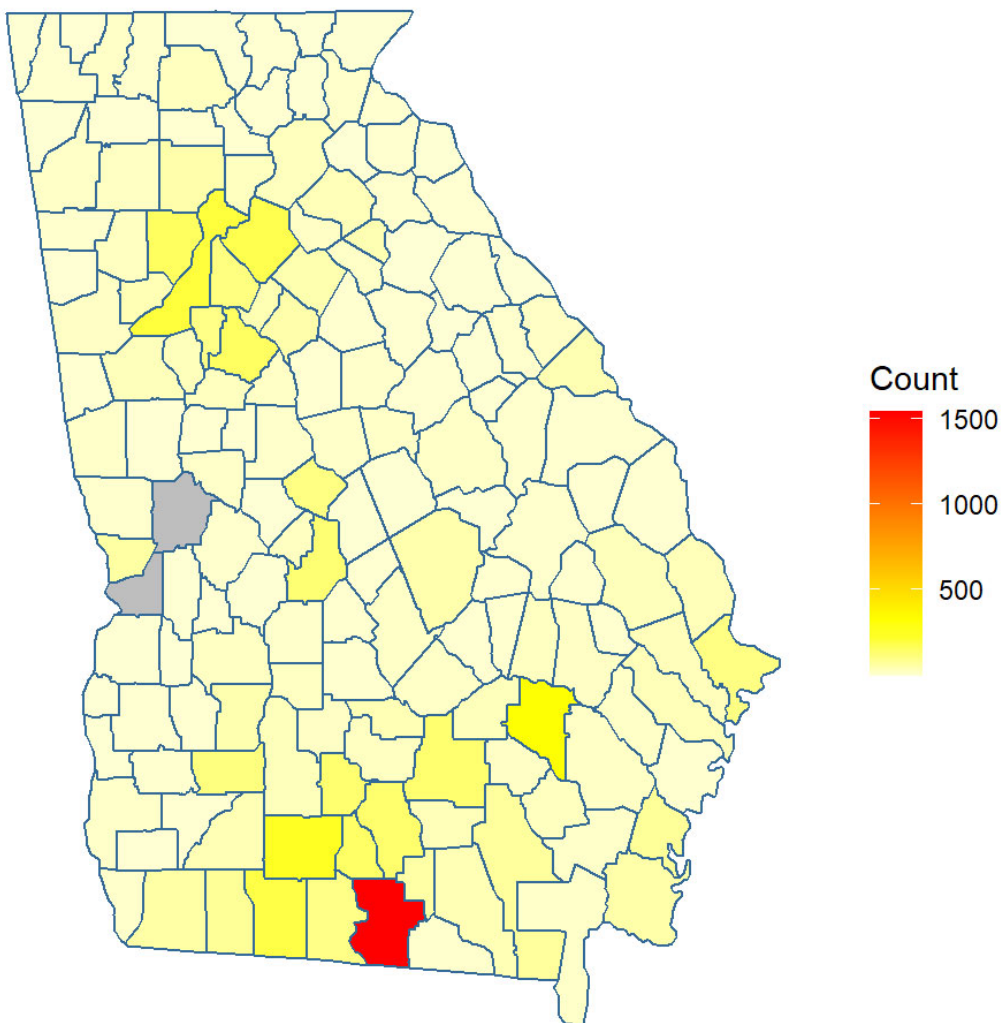
20 Counties with Highest Enrollment, Fall 2024

County	Number	County	Number
Lowndes	1,544	Coffee	138
Appling	325	Tift	137
Colquitt	252	Houston	131
Fulton	204	Dougherty	113
Thomas	192	Dekalb	111
Gwinnett	183	Chatham	108
Cobb	161	Bibb	106
Henry	159	Brooks	103
Cook	152	Clayton	102
Berrien	141	Grady	82

Source: VSU SRA Analysis of USG Academic Data Mart, 2025.

Of the 159 Georgia counties, 157 were represented at VSU in Fall 2024.

Enrollment by Georgia County of Residence, Fall 2024



Source: VSU SRA Analysis of USG Academic Data Mart, 2024. Analysis by VSU SRA, 2025.

Enrollment by State of Origin, Fall 2024

State	Count	State	Count	State	Count	State	Count
Georgia	70.10%	Pennsylvania	0.62%	Arkansas	0.18%	Delaware	0.09%
Florida	11.71%	Michigan	0.47%	Wisconsin	0.18%	New Hampshire	0.09%
Alabama	1.41%	Indiana	0.44%	Nevada	0.17%	District of Columbia	0.08%
California	1.37%	Massachusetts	0.42%	Oklahoma	0.17%	Alaska	0.08%
New York	1.36%	Louisiana	0.42%	Kansas	0.16%	Maine	0.07%
North Carolina	1.10%	Maryland	0.38%	West Virginia	0.15%	Rhode Island	0.07%
South Carolina	1.04%	Mississippi	0.36%	Utah	0.13%	Idaho	0.06%
Tennessee	1.02%	Arizona	0.35%	Oregon	0.11%	South Dakota	0.06%
Texas	1.00%	Kentucky	0.34%	Minnesota	0.11%	Vermont	0.05%
Ohio	0.81%	Colorado	0.31%	Iowa	0.11%	Wyoming	0.03%
New Jersey	0.71%	Connecticut	0.29%	New Mexico	0.10%	North Dakota	0.03%
Virginia	0.66%	Washington	0.24%	Nebraska	0.09%	Montana	0.03%
Illinois	0.66%	Missouri	0.22%	Hawaii	0.09%	Total	100.00%

*Notes: U.S. Territories not included. Numbers converted to percentages to retain student anonymity.
Source: USG Academic Data Mart, 2024. Analysis by VSU SRA, 2025.*

Students from Georgia and bordering states comprised 85.0% of VSU's Fall 2024 enrollment.



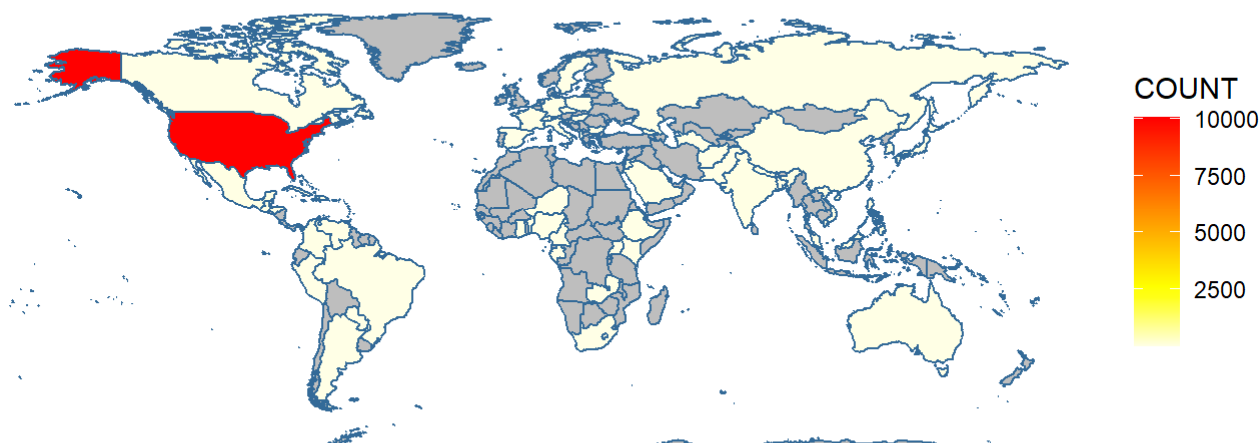
*Note: Alaska, Hawaii, and U.S. Territories, are not included in the map.
Source: USG Academic Data Mart, 2024. Analysis by VSU SRA, 2025.*

Enrollment by Country of Citizenship, Fall 2024

Country	Number	Country	Number	Country	Number	Country	Number
United States	97.81%	Comoros	0.03%	Berlin*	0.01%	Georgia	0.01%
Mexico	0.20%	Kiribati	0.03%	Trinidad and Tobago	0.01%	Japan	0.01%
India	0.19%	Sweden	0.03%	Ethiopia	0.01%	Total	100.00%
Belize	0.11%	Russia	0.03%	Nepal	0.01%		
Korea, Republic Of	0.10%	Argentina	0.03%	Uganda	0.01%		
Vietnam	0.10%	Niger	0.03%	Guatemala	0.01%		
Ghana	0.09%	Poland	0.03%	Spain	0.01%		
Colombia	0.09%	China	0.02%	Coral Sea Islands	0.01%		
Germany	0.08%	Peru	0.02%	Anguilla	0.01%		
West Germany (Federal Republic)*	0.07%	Paraguay	0.02%	Cuba	0.01%		
Australia	0.07%	Saudi Arabia	0.02%	Afghanistan	0.01%		
France	0.07%	South Africa	0.02%	Hungary	0.01%		
Honduras	0.06%	Netherlands	0.02%	Seychelles	0.01%		
Bahamas, The	0.05%	Kenya	0.02%	Cook Islands	0.01%		
Jamaica	0.05%	Haiti	0.02%	Benin	0.01%		
Venezuela	0.05%	Bangladesh	0.02%	Switzerland	0.01%		
Nigeria	0.04%	Philippines	0.02%	Czech Republic	0.01%		
Canada	0.04%	Zambia	0.01%	Bulgaria	0.01%		
Gabon	0.04%	Jordan	0.01%	Turkmenistan	0.01%		
Brazil	0.03%	Dominica	0.01%	Cameroon	0.01%		
Pakistan	0.03%	Malaysia	0.01%	Italy	0.01%		

Source: USG Academic Data Mart, 2024. Analysis by VSU SRA, 2025.

Notes: Countries listed above are based on international residency regardless of citizenship status. Numbers converted to percentages to retain student anonymity.



Source: USG Academic Data Mart, 2024. Analysis by VSU SRA, 2025.

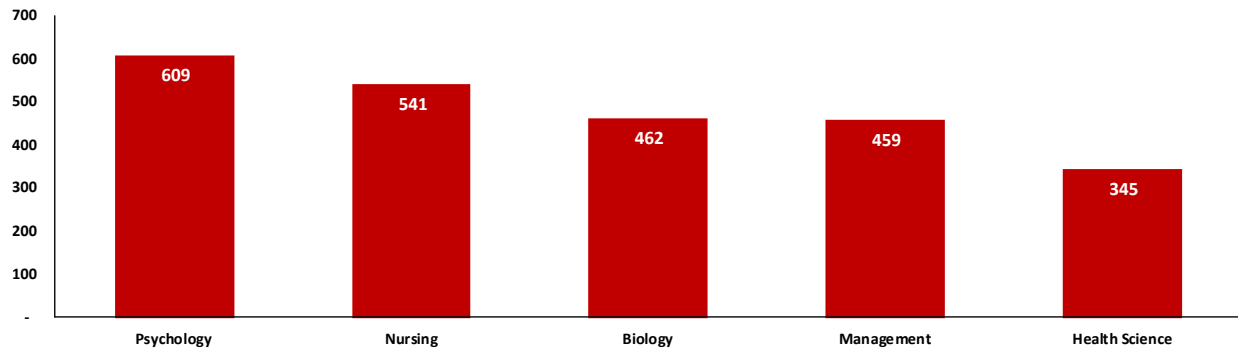
5 Largest Declared Undergraduate Majors, Fall 2024

Major	Number	Percent
Psychology	609	8.5%
Nursing	541	7.5%
Biology	462	6.4%
Management	459	6.4%
Health Science	345	4.8%

Note: Nursing includes Pre-Nursing majors.

Source: USG Academic Data Mart, 2024. Analysis by VSU SRA, 2025.

Top 5 Declared Undergraduate Majors



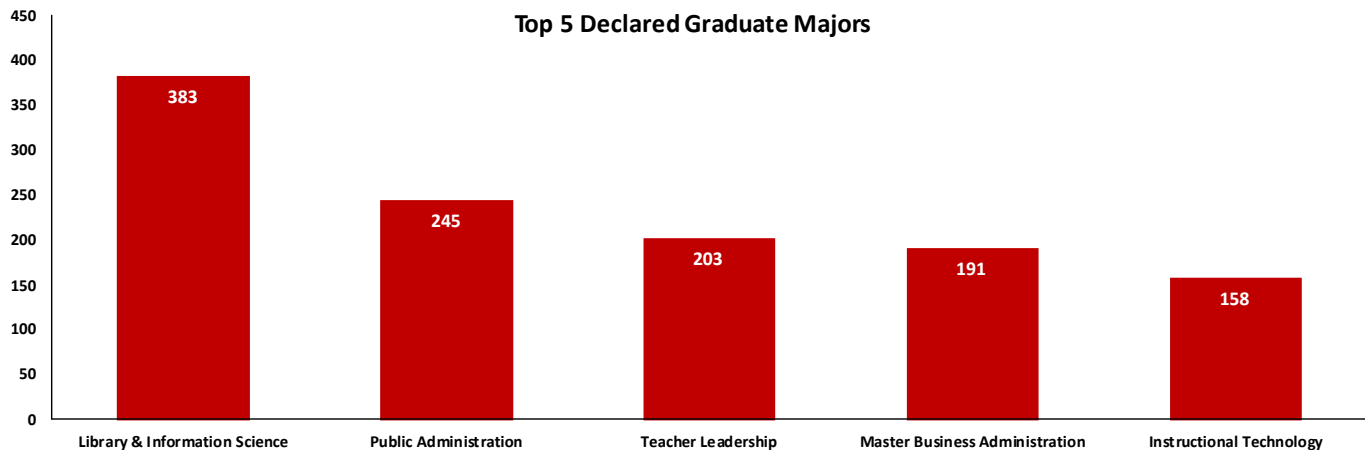
Source: USG Academic Data Mart, 2024. Analysis by VSU SRA, 2025.

5 Largest Declared Graduate Majors, Fall 2024

Major	Number	Percent
Library & Information Science	383	12.4%
Public Administration	245	7.9%
Teacher Leadership	203	6.6%
Master Business Administration	191	6.2%
Instructional Technology	158	5.1%

Source: USG Academic Data Mart, 2024. Analysis by VSU SRA, 2025.

Top 5 Declared Graduate Majors

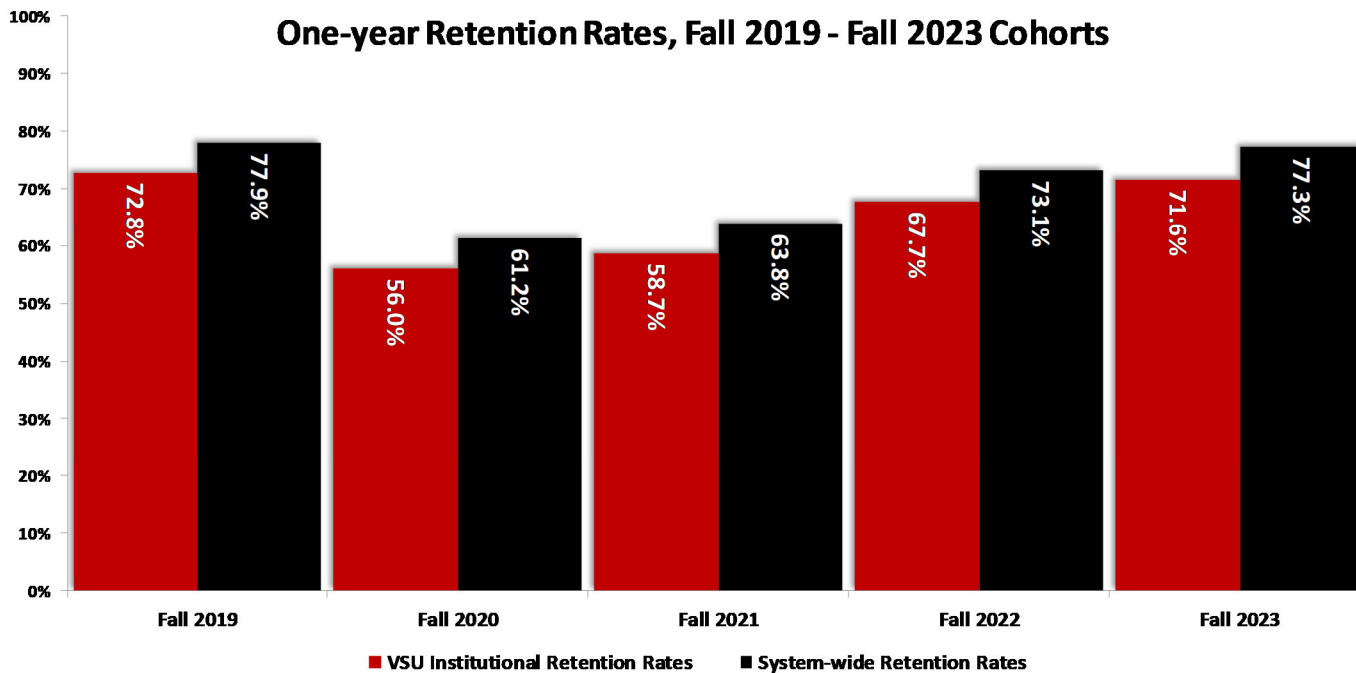


Source: USG Academic Data Mart, 2024. Analysis by VSU SRA, 2025.

One-year Retention Rates

Cohort	Number of Entering Freshman at VSU	Number of Returning Students at VSU	VSU Institutional Retention Rates	Number of Returning Students System-wide	System-wide Retention Rates
Fall 2019	1,600	1,164	72.8%	1,246	77.9%
Fall 2020	2,324	1,301	56.0%	1,423	61.2%
Fall 2021	1,716	1,008	58.7%	1,094	63.8%
Fall 2022	1,081	732	67.7%	790	73.1%
Fall 2023	1,091	781	71.6%	843	77.3%

Note: The official USG Retention rate tracks first-time, full-time students for one year. The USG System-wide retention rates show the percent of students who began at VSU, but later transferred to another USG institution.



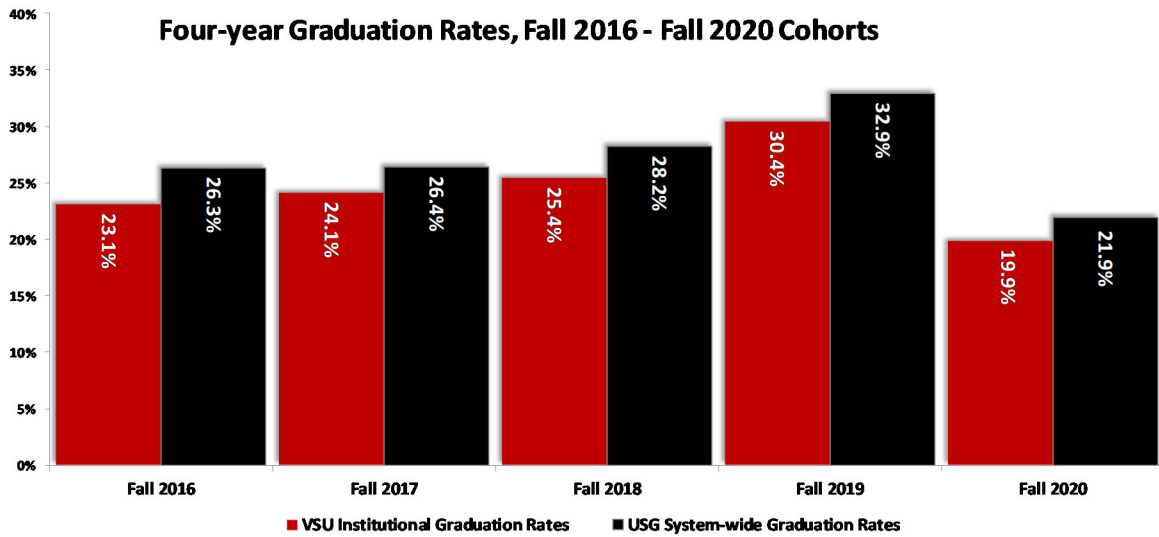
Source: USG By The Numbers 2019-2023

Graduation Rates

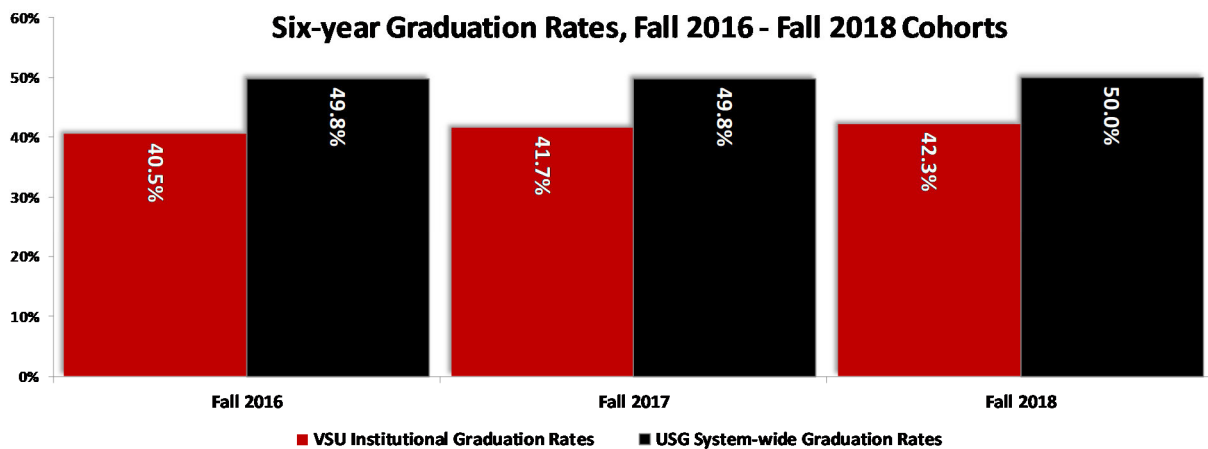
Cohort	First-time Full-time Freshmen	4-year VSU Graduation Rates	4-year System-wide Graduation Rates	6-year VSU Graduation Rates	6-year System-wide Graduation Rates
Fall 2016	1,470	23.1%	26.3%	40.5%	49.8%
Fall 2017	1,675	24.1%	26.4%	41.7%	49.8%
Fall 2018	1,703	25.4%	28.2%	42.3%	50.0%
Fall 2019	1,524	30.4%	32.9%		
Fall 2020	2,231	19.9%	21.9%		

Note: VSU graduation rates are based on first-time, full-time students pursuing a bachelors degree who originally enrolled at VSU and graduated from VSU. System-wide graduation rates are based on first-time, full-time students who originally enrolled at VSU but transferred and graduated from another USG institution.

Source: USG By The Numbers—Graduation Rate Report, 2016—2020.



Source: USG By The Numbers—Graduation Rate Report, 2016—2020. Analysis by VSU SRA, 2025.



Source: USG By The Numbers—Graduation Rate Report, 2016—2018. Analysis by VSU SRA, 2025.

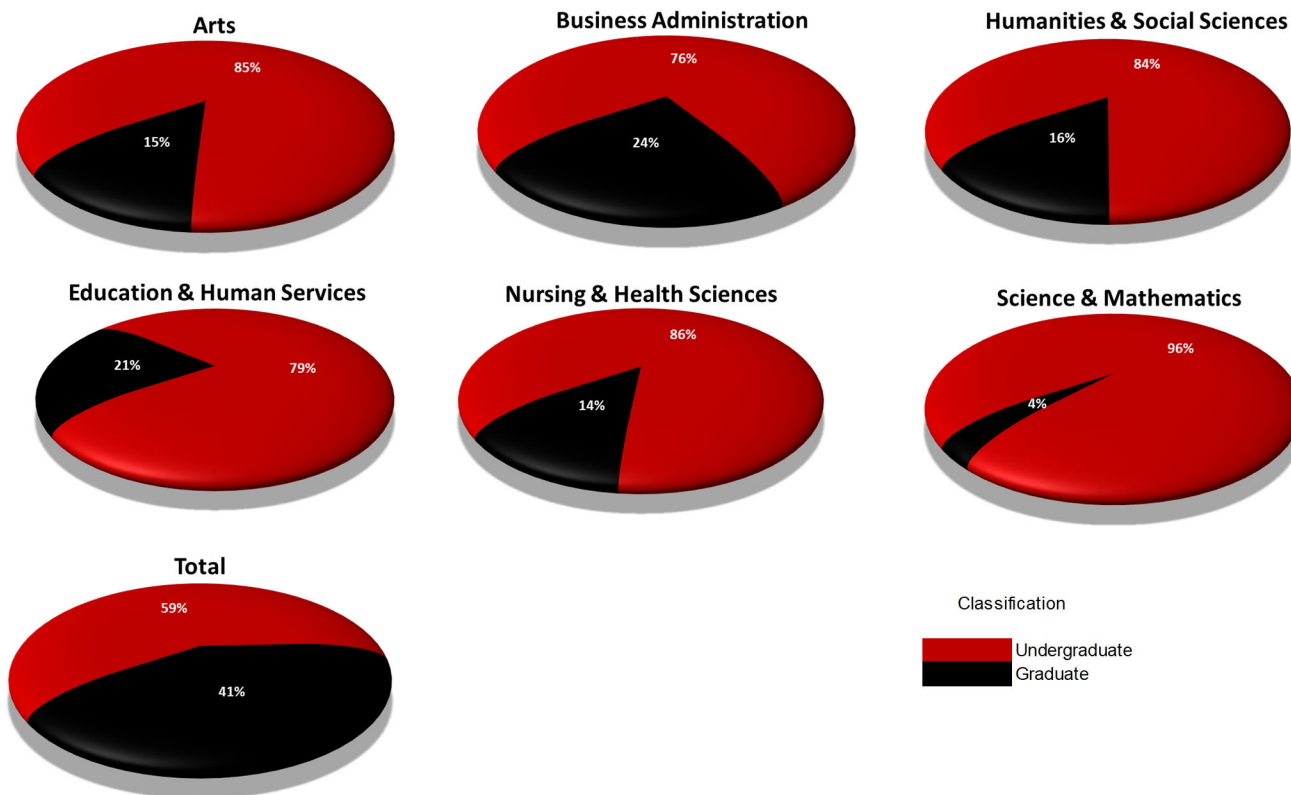
Degrees Conferred by College

College/Division	FY2020	FY2021	FY2022	FY2023	FY2024	Total
Business Administration	356	375	376	380	384	1,871
Education & Human Services	941	1,069	1,013	938	1,006	4,967
Humanities & Social Sciences	635	574	592	669	549	3,019
Nursing & Health Sciences	219	230	247	293	259	1,248
Science & Mathematics	174	177	158	147	167	823
Arts	222	199	205	203	165	994
Total	2,547	2,624	2,591	2,630	2,530	12,922

Source: USG Degrees Conferred Reports, FY2020-2024. Analysis by VSU SRA, 2025.

Over the last five years, VSU has conferred over 12,922 undergraduate and graduate degrees.

Degrees Conferred by College, FY2024

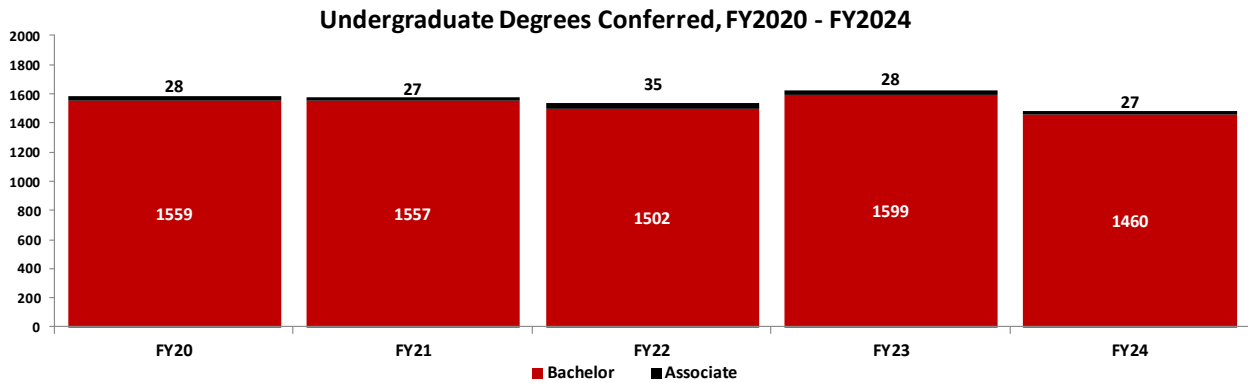


Source: USG Degrees Conferred Reports, FY2024. Analysis by VSU SRA, 2025.

Undergraduate Degrees Conferred by College

College	FY2020	FY2021	FY2022	FY2023	FY2024	Total
Business Administration	310	320	323	302	290	1,545
Education & Human Services	193	200	160	161	209	923
Humanities and Social Sciences	523	495	508	584	463	2,573
Nursing & Health Sciences	191	208	206	254	223	1,082
Science and Mathematics	171	174	154	145	161	805
Arts	199	187	186	181	141	894
Total	1,587	1,584	1,537	1,627	1,487	7,822

Source: USG Degrees Conferred Reports, FY2020-2024. Analysis by VSU SRA, 2025.

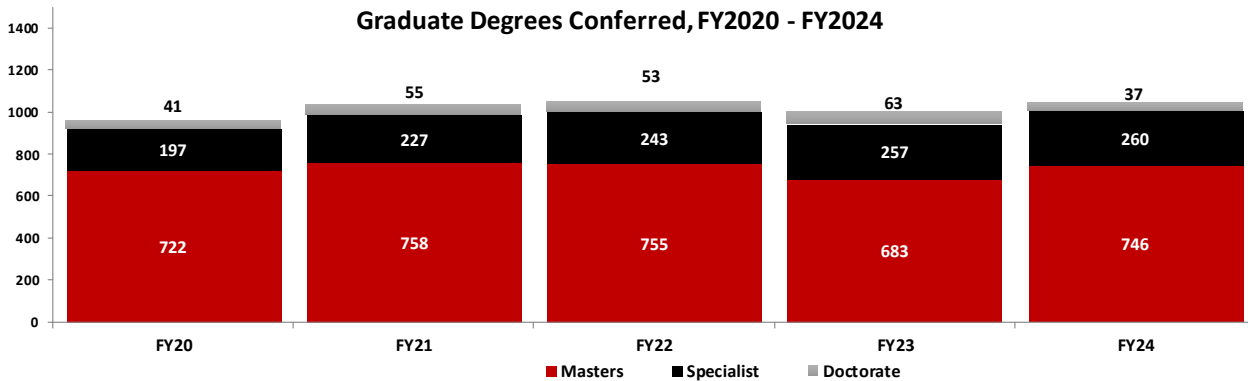


Source: USG Degrees Conferred Reports, FY2020-2024. Analysis by VSU OIR, 2025.

Graduate Degrees Conferred by College

College/Division	FY2020	FY2021	FY2022	FY2023	FY2024	Total
Business Administration	46	55	53	78	94	326
Education & Human Services	748	869	853	777	797	4,044
Humanities and Social Sciences	112	79	84	85	86	446
Nursing & Health Sciences	28	22	41	39	36	166
Science and Mathematics	3	3	4	2	6	18
Arts	23	12	19	22	24	100
Total	960	1,040	1,054	1,003	1,043	5,100

Source: USG Degrees Conferred Reports, FY2020-2024. Analysis by VSU SRA, 2025.



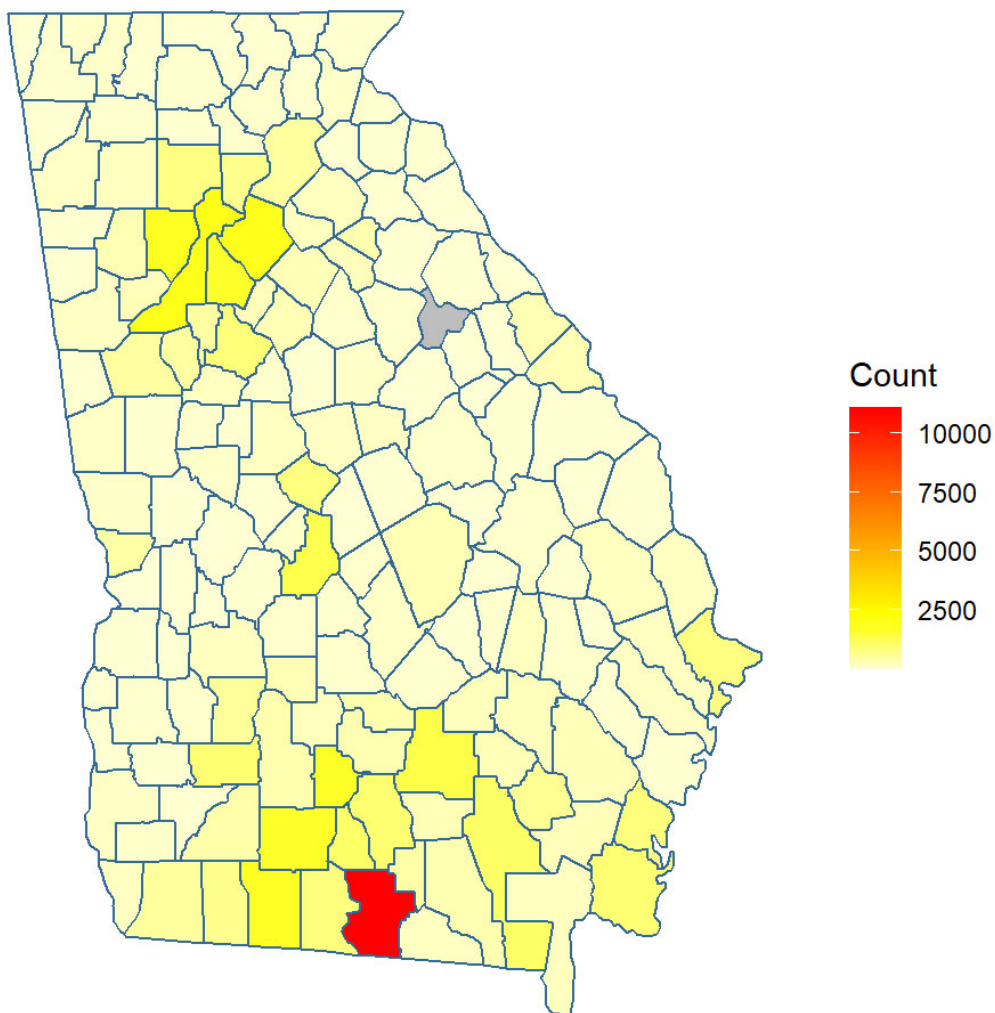
Source: USG Degrees Conferred Reports, FY2020-2024 Analysis by VSU SRA, 2025.

20 Georgia Counties with Highest Alumni Residency

County	Number	County	Number	County	Number
Lowndes	11,104	DeKalb	1,600	Camden	950
Fulton	2,040	Coffee	1,371	Henry	868
Gwinnett	2,004	Houston	1,327	Glynn	826
Cobb	1,856	Ware	1,092	Brooks	822
Thomas	1,750	Cook	1,068	Bibb	801
Tift	1,658	Berrien	988	Chatham	774
Colquitt	1,612	Dougherty	967		

Source: VSU Alumni Relations, 2025. Analysis by VSU SRA, 2025.

Alumni by Georgia County



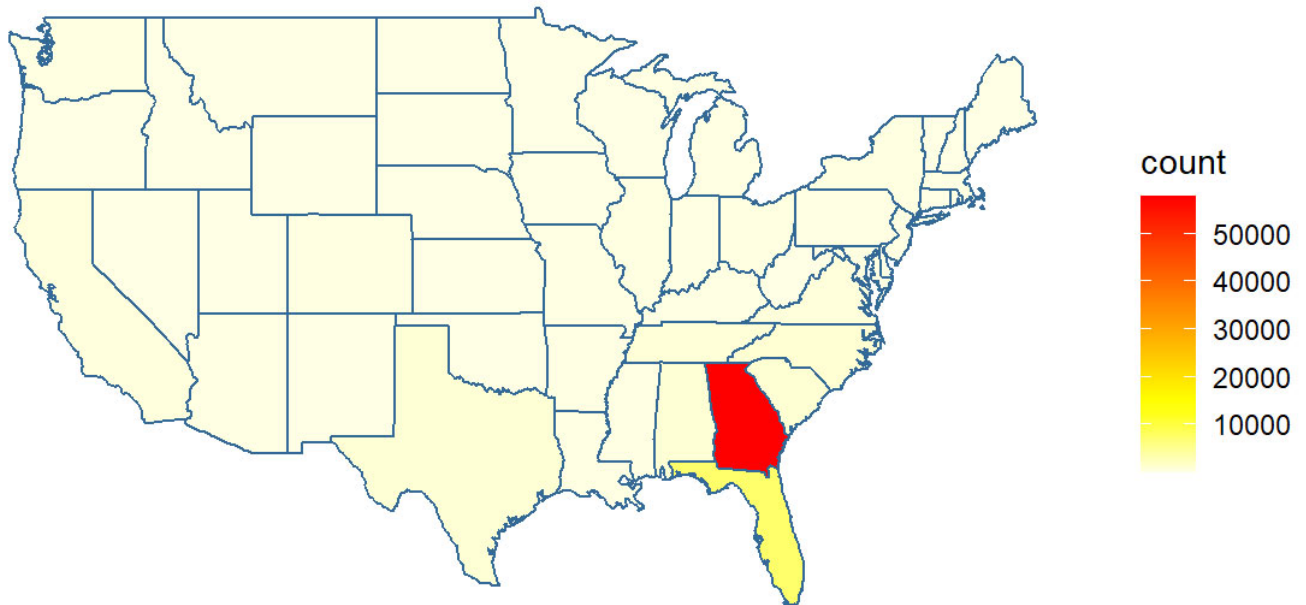
Source: VSU Alumni Relations, 2025. Analysis by VSU SRA, 2025.

Alumni by State of Residence

State	Number	State	Number	State	Number	State	Number
Georgia	58,041	Washington	229	Oklahoma	95	West Virginia	35
Florida	7,410	Pennsylvania	222	Connecticut	90	Delaware	33
North Carolina	1,147	Kentucky	208	Wisconsin	89	Maine	31
South Carolina	1,071	Arizona	206	Kansas	85	Wyoming	27
Alabama	997	Mississippi	199	Utah	83	Rhode Island	24
Texas	987	Missouri	173	Minnesota	82	North Dakota	21
Tennessee	874	Indiana	172	New Mexico	75	South Dakota	20
Virginia	687	Michigan	170	Iowa	55	Vermont	15
California	556	Louisiana	168	Nebraska	50		
Colorado	330	New Jersey	128	Idaho	50		
Ohio	296	Massachusetts	119	New Hampshire	48		
Maryland	271	Arkansas	110	Alaska	47		
New York	253	Oregon	105	Montana	45		
Illinois	253	Nevada	102	Hawaii	36	GRAND TOTAL	76,620

Source: VSU Alumni Relations, 2025. Analysis by VSU SRA, 2025.

Alumni by State of Residence



Note: Alaska, Hawaii, and U.S. Territories, are not pictured in this map.

Source: VSU Alumni Relations, 2025. Analysis by VSU SRA, 2025.

Student Services

Student Services





MEN'S ATHLETICS

6 TEAMS

- Baseball
- Basketball
- Cross Country
- Football
- Golf
- Tennis

WOMEN'S ATHLETICS

6 TEAMS

- Basketball
- Cross Country
- Soccer
- Softball
- Tennis
- Volleyball

AFFILIATIONS

Gulf South Conference
NCAA Division II



Student Services

- Residence Hall Occupancy
- Financial Aid Awarded
- Odum Library Collection



Quick Facts about VSU's Student Services:

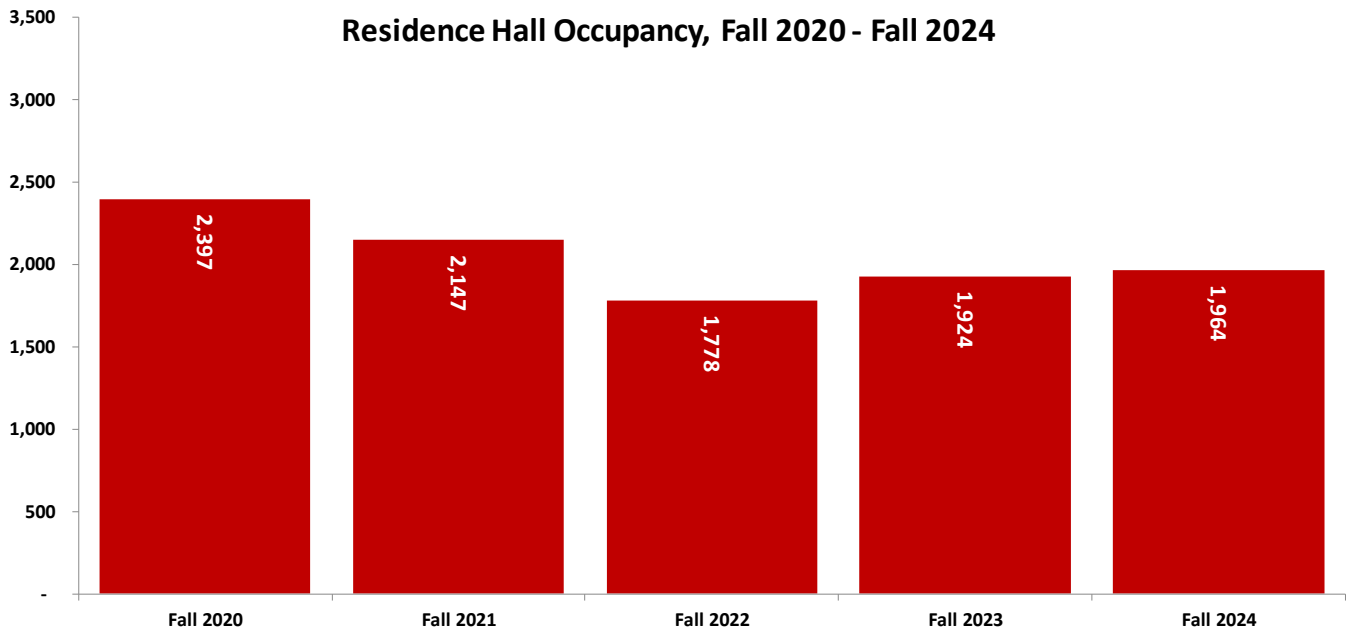
- A total of 1,964 students lived in residence halls in Fall 2024, which represents 19.1% of VSU's total enrollment.
- Of the students living in residence halls, 67.8% are women.
- In academic year 2024-2025, 1,081 degree seeking, first-time, full-time students applied for financial aid, and 791 students (73.2%) were determined to have financial need.
- The number of physical and digital/electronic holding items in the Odum Library collection increased by from 1,915,092 in FY2023 to 2,074,908 in FY2024.

Residence Hall Occupancy

Building	Fall 2020	Fall 2021	Fall 2022	Fall 2023	Fall 2024
Patterson Hall	-	-	-	250	215
Brown Hall	182	187	90	-	169
Centennial Hall	501	459	433	482	451
Georgia Hall	487	486	430	462	457
Hopper Hall	486	504	450	453	458
Langdale Hall	448	374	190	-	-
Lowndes Hall	201	48	105	191	134
Reade Hall	92	89	80	86	80
Total	2,397	2,147	1,778	1,924	1,964

Source: VSU Housing and Residence Life. Analysis by VSU SRA, 2025.

Of VSU total enrollment for Fall 2024, 19.1% lived in a residence hall.



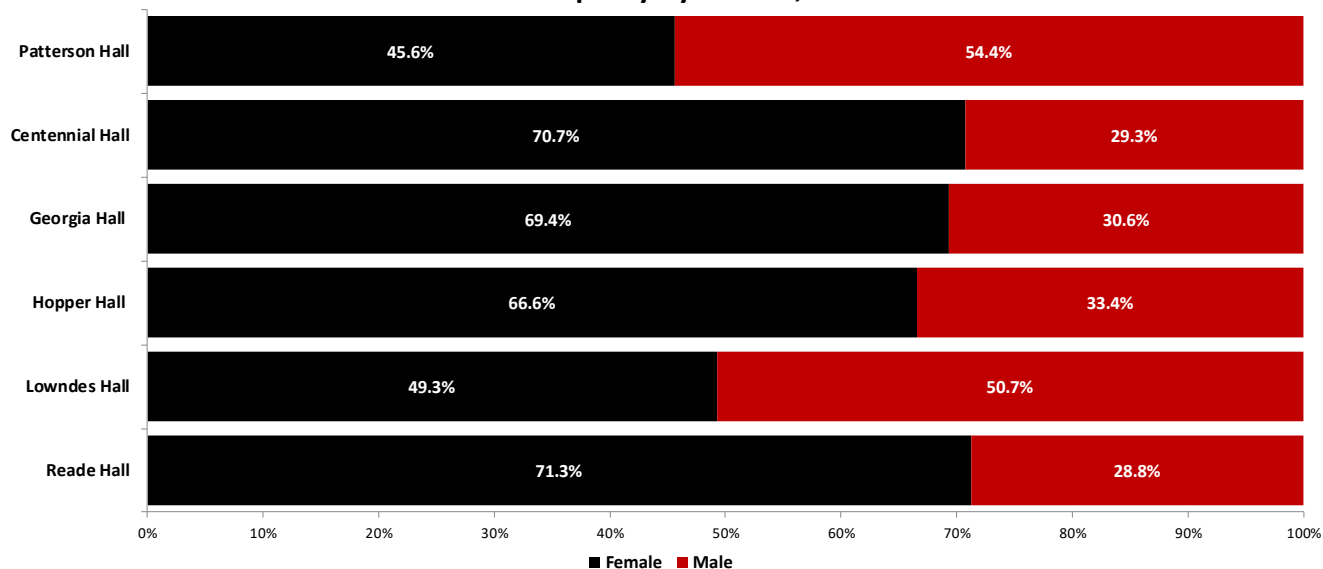
Source: VSU Housing and Residence Life. Analysis by VSU SRA, 2025.

Residence Hall Occupancy by Gender, Fall 2024

Building	Female	% Female	Male	% Male	Total	% of Total
Patterson Hall	98	45.6%	117	54.4%	215	10.9%
Brown Hall	169	-	-	-	169	8.6%
Centennial Hall	319	70.7%	132	29.3%	451	23.0%
Georgia Hall	317	69.4%	140	30.6%	457	23.3%
Hopper Hall	305	66.6%	153	33.4%	458	23.3%
Langdale Hall	-	-	-	-	-	0.0%
Lowndes Hall	66	49.3%	68	50.7%	134	6.8%
Reade Hall	57	71.3%	23	28.8%	80	4.1%
Total	1,331	67.8%	633	32.2%	1,964	100.0%

Source: VSU Housing and Residence Life, 2025. Analysis by VSU SRA, 2025.

Residence Hall Occupancy by Gender, Fall 2024



Source: VSU Housing and Residence Life, 2025. Analysis by VSU SRA, 2025.

Financial Aid Awarded in Fall 2024

Students Receiving Financial Aid	Number	Percent
Number of degree-seeking, first-time, full-time freshmen	1,081	100.0%
Degree seeking first-time, full-time freshmen who applied for need-based financial aid	1,006	93.1%
Students who applied for need-based financial aid and were determined to have financial need	791	73.2%
Students who applied for need-based financial aid, were determined to have financial need, who were awarded any financial aid and whose need was fully met (excludes PLUS loans, unsubsidized loans, and private alternative loans)	74	6.8%

Source: Common Data Set, 2024. Analysis by VSU SRA, 2025.

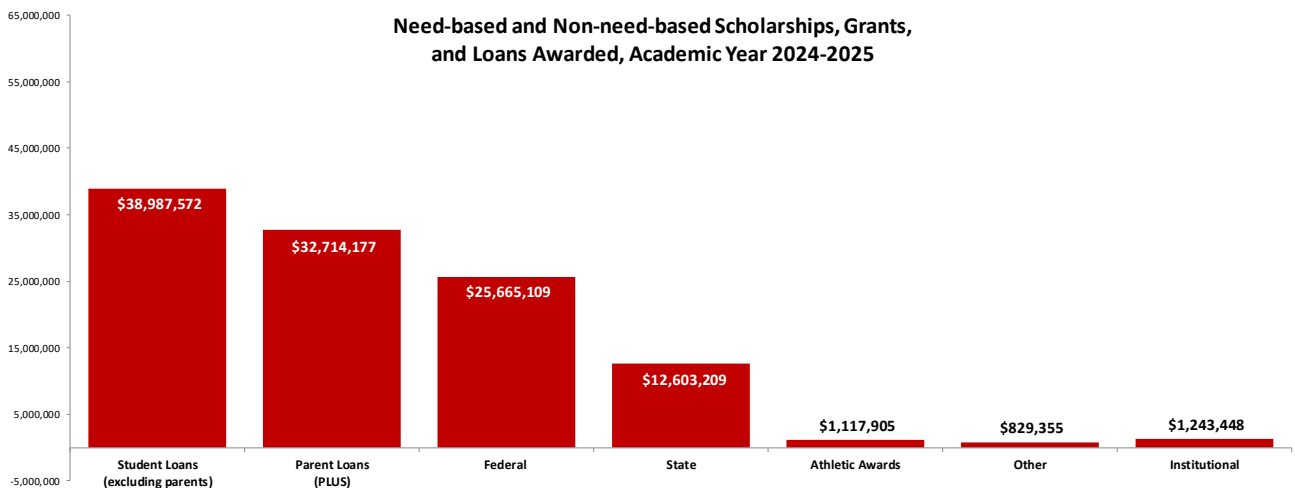
Need-based and Non-need-based Scholarships and Grants Distributed				
Federal	State	Institutional	Other	Total
\$ 25,665,109	\$ 12,603,209	\$ 1,243,448	\$ 829,355	\$ 40,341,121

Source: Common Data Set, 2024. Analysis by VSU SRA, 2025.

Need-based and Non-need-based Loans/Awards Distributed		
Parents Loans (PLUS)	Athletic Awards	Student Loans (excluding parent)
\$ 32,714,177	\$ 1,117,905	\$ 38,987,572

Source: Common Data Set, 2024. Analysis by VSU SRA, 2025.

The percentage of degree seeking, first-time, full-time freshman who applied for need-based financial aid decreased from 93.3% in Fall 2023 to 93.1% in Fall 2024



Source: VSU Financial Aid Office 2024. Analysis by VSU SRA, 2025.

Odum Library Collection, FY 2021-2024

Physical Holdings	2020-2021	2021-2022	2022-2023	2023-2024
Print Volumes ^a	478,089	480,671	418,030	454,863
Media Titles ^b	31,292	29,139	44,251	46,086
Serial Titles	9,924	9,961	8,040	9,016
Library Circulation (Initial) ^c	6,777	8,069	7,718	10,327
Digital/Electronic Holdings				
e-Book Titles ^{d,e}	460,922	754,466	1,343,598	1,320,906
e-Media titles ^d	111,378	107,631	49,545	49,961
Library Circulation/Virtual (Usage)	352,407	257,645	225,700	241,586
e-Serial titles ^f	102,250	158,838	51,385	193,829
Databases ^d	225	215	243	247
Materials Budget				
One-time Resource Purchases	\$ 108,736	\$ 81,092	\$ 117,017	\$ 94,721
Ongoing Resource Purchases, e.g. Subscriptions, Annual License Fees	\$ 867,788	\$ 884,149	\$ 806,858	\$ 727,297
Collection Support (Preservation) Library Bindery	\$ 2,287	\$ 63,339	\$ 7,714	\$ 4,246
Interlibrary Activity				
Interlibrary Loans: Borrowed /Received	2,934	2,788	2,560	2,506
Interlibrary Loans: Loaned/Lending/Provided	5,374	6,685	3,680	3,250

Source: IPEDS Academic Libraries FY21-FY24

a Print Volumes incl. Cataloged government documents and bound journal back files

b DVD, Sound Recording, Map Titles, two- and three-dimensional materials in the Catalog

c Initial circulation from general physical collection

d Odum Library & USG GALILEO

e e-government documents and electronic theses included

f A-to-Z Full Text Journal Title List count (EBSCO)

Employee Information



Employee Information

- **Employees by Occupational Area**
- **Employees by Occupational Area and Time Status**
- **Employees by Gender and Ethnicity**
- **Instructional Faculty by College and Time Status**
- **Employees by Occupational Area and Gender**
- **Full-time Instructional Faculty by Gender and Ethnicity**
- **Full-time Instructional Faculty by Tenure Status**
- **Full-time Instructional Faculty by Highest Degree**
- **Full-time Instructional Faculty by Gender and Academic Rank**
- **Graduate Assistants**

Quick Facts about VSU's Employees:

- Of the 1,317 total employees, Postsecondary Teachers - Instruction comprised the largest portion of the employee population with 43.9% in Fall 2024.
- From Fall 2023 to Fall 2024, the number of total VSU employees decreased 3.1%.
- Females constituted 60.4% of total employees and 55.0% of full-time instructional faculty in Fall 2024.
- In Fall 2024, 36.7% of total employees were self-declared minorities.
- Fall 2024 percentages by rank of the 387 full-time instructional faculty:
 - Professor: 33.9%
 - Associate Professor: 17.8%
 - Assistant Professor: 17.6%
 - Instructor: 11.4%
 - Lecturer: 19.4%
 - No Rank: 0.0%
- In Fall 2024, there were 208 graduate assistants employed.

Note: Cover photo courtesy of Valdosta State Flickr.

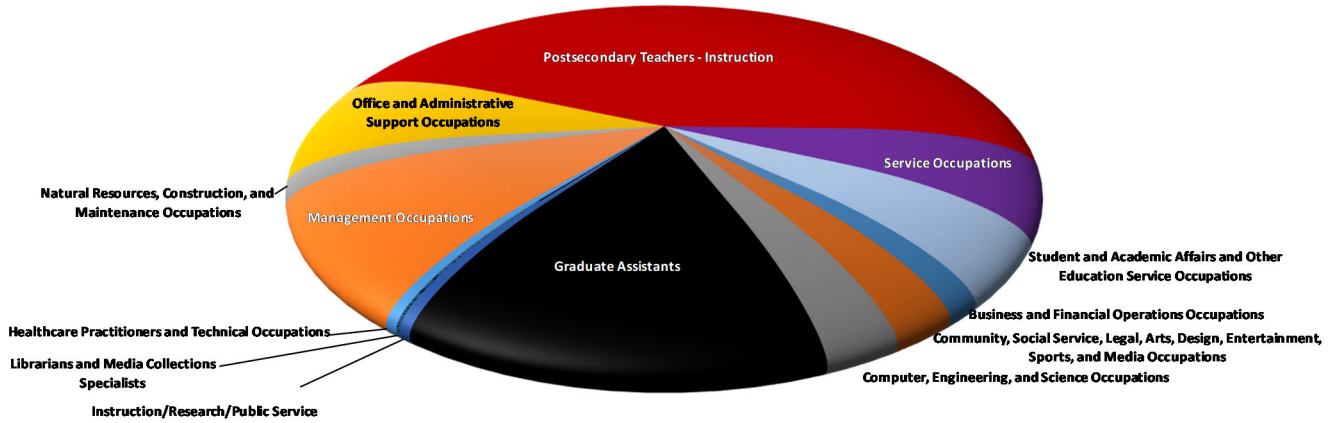
Employees[†] by Occupational Area

Occupational Area	Fall 2024
Business and Financial Operations Occupations	20
Community, Social Service, Legal, Arts, Design, Entertainment, Sports, and Media Occupations	35
Computer, Engineering, and Science Occupations	39
Graduate Assistants	208
Healthcare Practitioners and Technical Occupations	7
Instruction/Research/Public Service	2
Librarians and Media Collections Specialists	7
Management Occupations	136
Natural Resources, Construction, and Maintenance Occupations	24
Office and Administrative Support Occupations	109
Postsecondary Teachers - Instruction	578
Service Occupations	84
Student and Academic Affairs and Other Education Service Occupations	68
Total	1,317

[†]Employee data as of November 1, 2024.

Source: VSU Human Resources, 2024. Analysis by VSU SRA, 2025.

Employees by Occupational Area, Fall 2024



Source: VSU Human Resources, 2024. Analysis by VSU SRA, 2025.

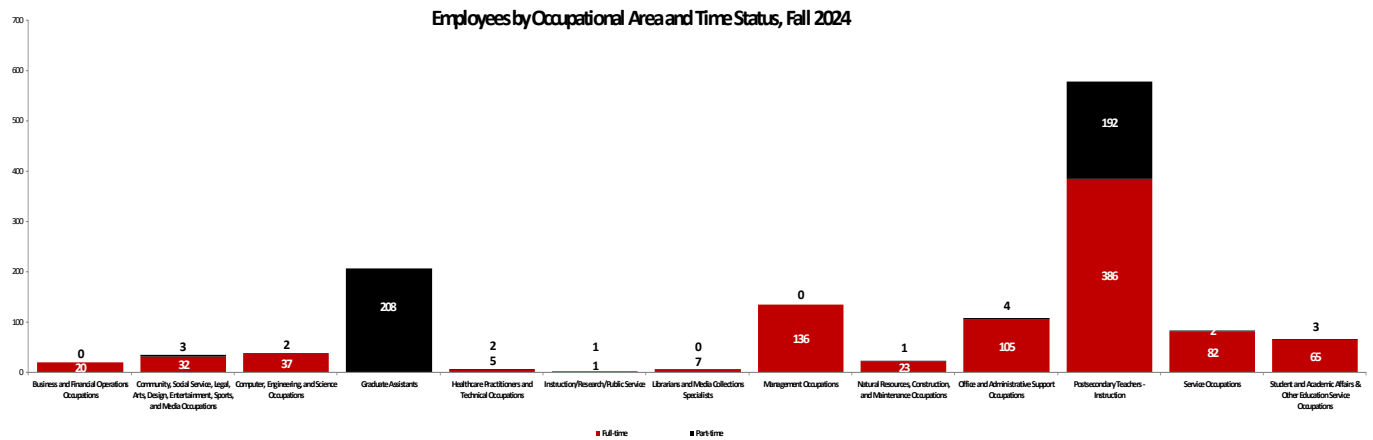
Employees[†] by Occupational Area and Time Status, Fall 2024

Occupational Area	Full-time	% Full-time	Part-time	% Part-time	Total	% Total
Business and Financial Operations Occupations	20	100.0%	-	0.0%	20	1.5%
Community, Social Service, Legal, Arts, Design, Entertainment, Sports, and Media Occupations	32	91.4%	3	8.6%	35	2.7%
Computer, Engineering, and Science Occupations	37	94.9%	2	5.1%	39	3.0%
Graduate Assistants	-	0.0%	208	100.0%	208	15.8%
Healthcare Practitioners and Technical Occupations	5	71.4%	2	28.6%	7	0.5%
Instruction/Research/Public Service	1	50.0%	1	50.0%	2	0.2%
Librarians and Media Collections Specialists	7	100.0%	-	0.0%	7	0.5%
Management Occupations	136	100.0%	-	0.0%	136	10.3%
Natural Resources, Construction, and Maintenance Occupations	23	95.8%	1	4.2%	24	1.8%
Office and Administrative Support Occupations	105	96.3%	4	3.7%	109	8.3%
Postsecondary Teachers - Instruction	386	66.8%	192	33.2%	578	43.9%
Service Occupations	82	97.6%	2	2.4%	84	6.4%
Student and Academic Affairs & Other Education Service Occupations	65	95.6%	3	4.4%	68	5.2%
Total	899	68.3%	418	31.7%	1,317	100.0%

[†]Employee data as of November 1, 2024.

Source: VSU Human Resources, 2024. Analysis by VSU SRA, 2025.

In Fall 2024, full-time employees accounted for 68.3% of the total



Source: VSU Human Resources, 2024. Analysis by VSU SRA, 2025.

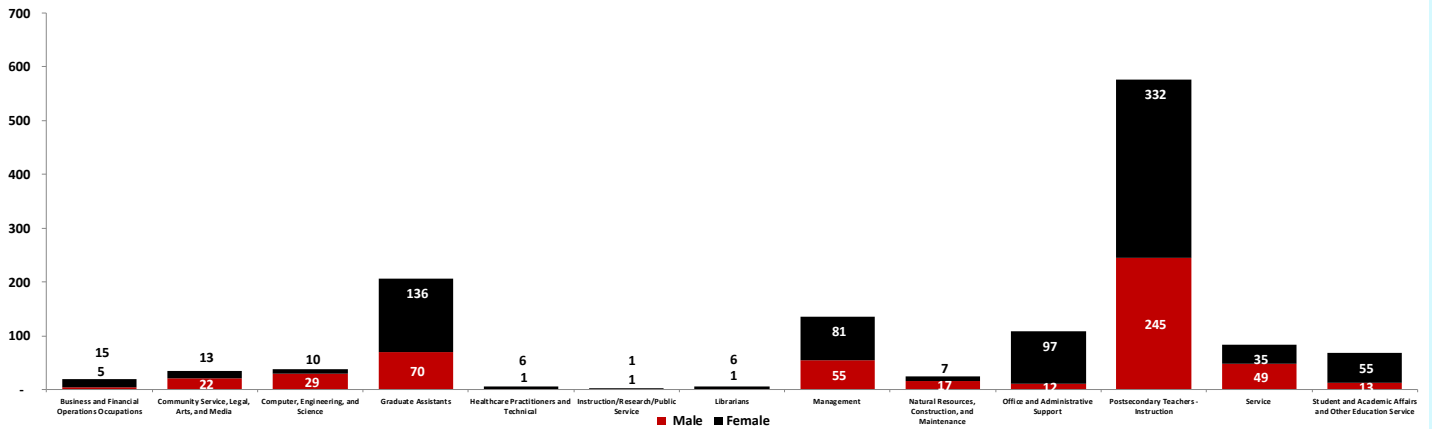
Employees[†] by Occupational Area and Gender, Fall 2024

Occupational Area	Male	% Male	Female	% Female	Total	% Total
Business and Financial Operations Occupations	5	25.0%	15	75.0%	20	1.5%
Community Service, Legal, Arts, and Media	22	62.9%	13	37.1%	35	2.7%
Computer, Engineering, and Science	29	74.4%	10	25.6%	39	3.0%
Graduate Assistants	70	34.0%	136	66.0%	206	15.7%
Healthcare Practitioners and Technical	1	14.3%	6	85.7%	7	0.5%
Instruction/Research/Public Service	1	50.0%	1	50.0%	2	0.2%
Librarians	1	14.3%	6	85.7%	7	0.5%
Management	55	40.4%	81	59.6%	136	10.4%
Natural Resources, Construction, and Maintenance	17	70.8%	7	29.2%	24	1.8%
Office and Administrative Support	12	11.0%	97	89.0%	109	8.3%
Postsecondary Teachers - Instruction	245	42.5%	332	57.5%	577	43.9%
Service	49	58.3%	35	41.7%	84	6.4%
Student and Academic Affairs and Other Education Service	13	19.1%	55	80.9%	68	5.2%
Total	520	39.6%	794	60.4%	1,314	100.0%

[†]Employee data as of November 1, 2024.

Source: VSU Human Resources, 2024. Analysis by VSU SRA, 2025.

**Employees by Occupational Area and Gender
Fall 2024**



Source: VSU Human Resources, 2024. Analysis by VSU SRA, 2025.

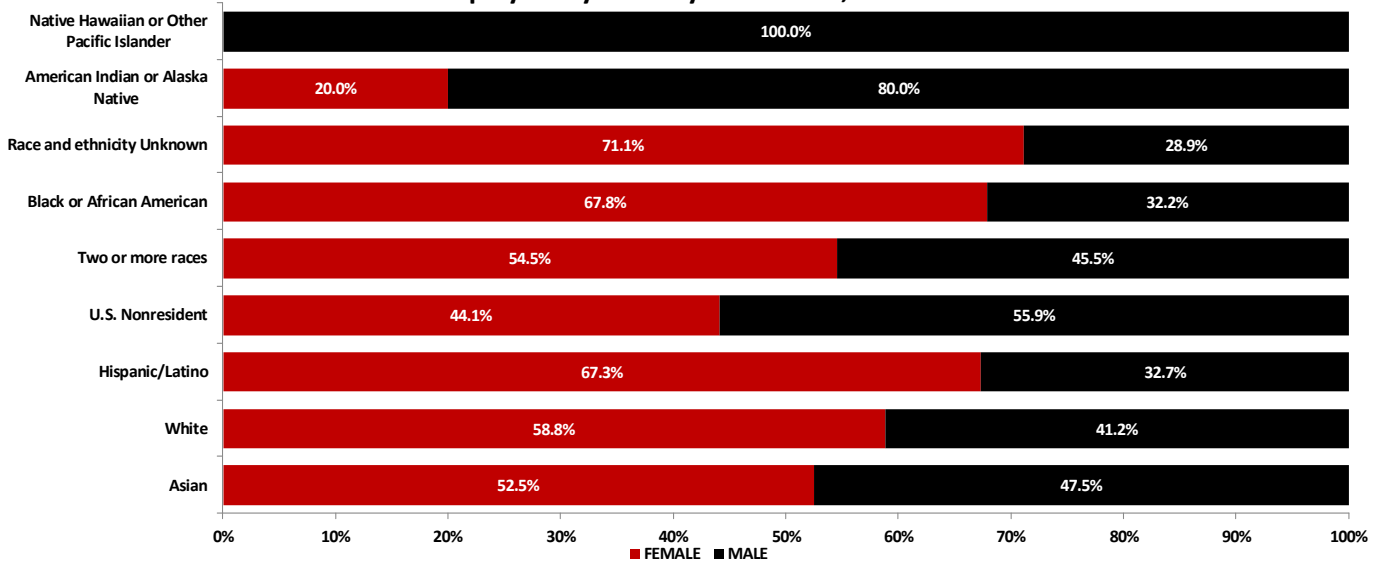
Employees[†] by Gender and Ethnicity

Gender/Ethnicity	Fall 2020	Fall 2021	Fall 2022	Fall 2023	Fall 2024	% Change from 2020-2024
Gender						
Male	633	615	585	550	520	-17.9%
Female	880	846	818	809	794	-9.8%
Total	1,513	1,461	1,403	1,359	1,314	-13.2%
Ethnicity and Gender						
Black or African American Male	104	88	91	89	85	-18.3%
Black or African American Female	214	188	181	191	179	-16.4%
White or Caucasian Male	435	418	386	361	343	-21.1%
White or Caucasian Female	554	527	503	481	489	-11.7%
All Other Male	94	109	108	100	92	-2.1%
All Other Female	112	131	134	137	126	12.5%
Total	1,513	1,461	1,403	1,359	1,314	-13.2%

[†]Employee data as of November 1, 2024.

Source: VSU Human Resources, 2020-2024. Analysis by VSU SRA, 2025.

Employees by Ethnicity and Gender, Fall 2024



Source: VSU Human Resources, 2024. Analysis by VSU SRA, 2025.

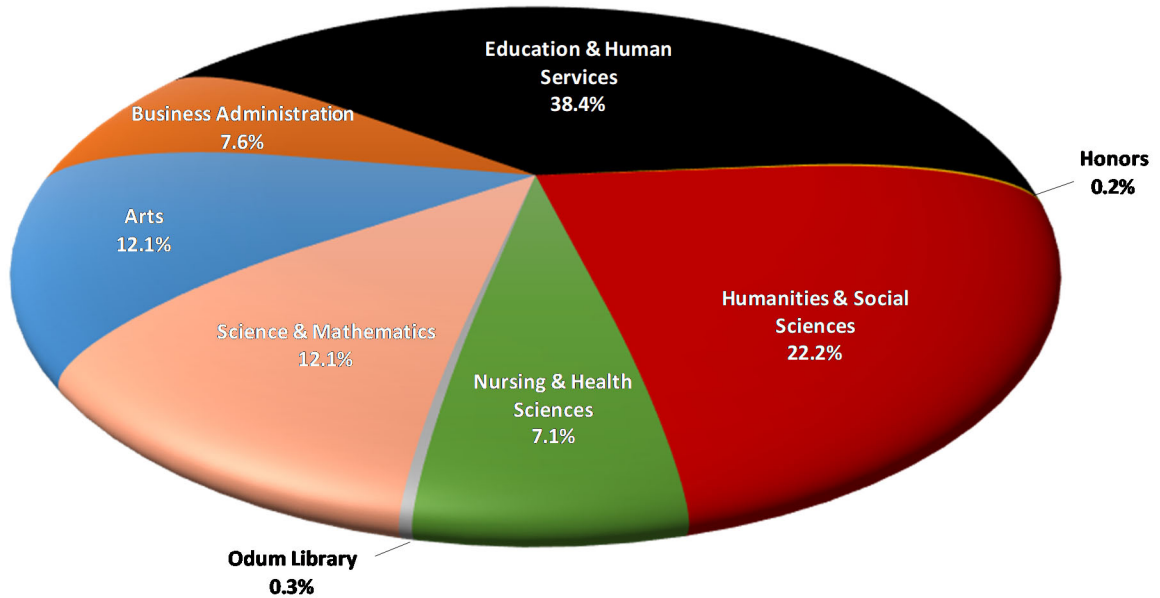
Instructional Faculty[†] by College and Time Status, Fall 2024

College	Full-time	% Full-time	Part-time	% Part-time	Total	% Total
Arts	58	82.9%	12	17.1%	70	12.1%
Business Administration	37	84.1%	7	15.9%	44	7.6%
Education & Human Services	110	49.3%	113	50.7%	223	38.4%
Honors	1	100.0%	-	0.0%	1	0.2%
Humanities & Social Sciences	83	64.3%	46	35.7%	129	22.2%
Nursing & Health Sciences	28	68.3%	13	31.7%	41	7.1%
Odum Library	2	100.0%	-	0.0%	2	0.3%
Science & Mathematics	68	97.1%	2	2.9%	70	12.1%
Total	387	66.7%	193	33.3%	580	100.0%

[†] Employee data as of November 1, 2024.

Source: VSU Human Resources, 2024. Analysis by VSU SRA, 2025.

Instructional Faculty by College, Fall 2024



Source: VSU Human Resources, 2024. Analysis by VSU SRA, 2025.

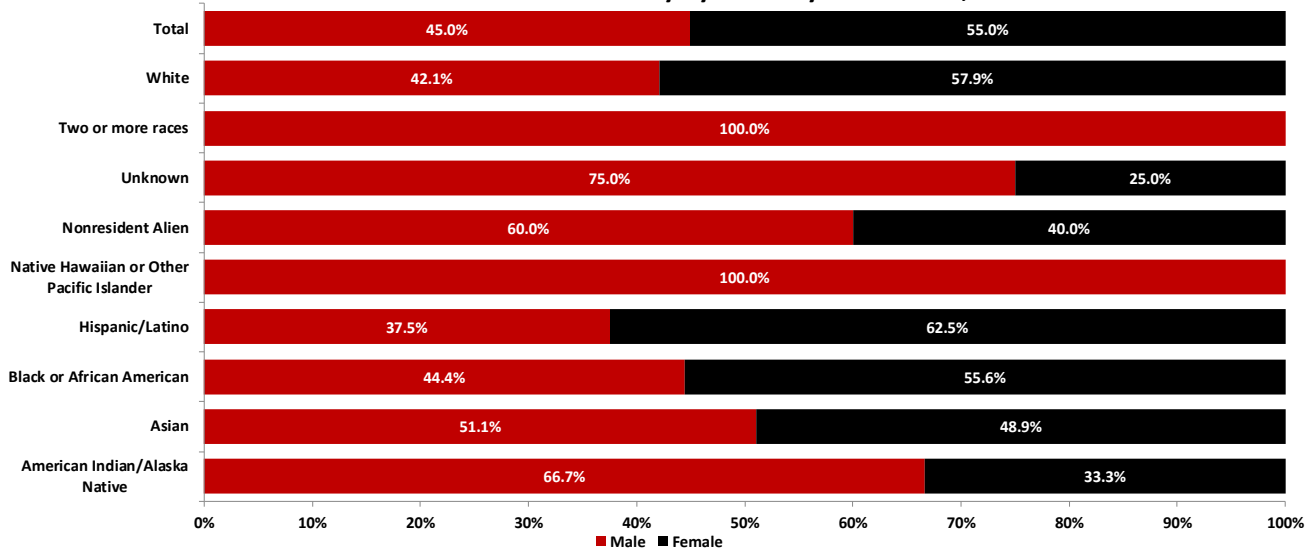
Full-Time Instructional Faculty[†] by Gender and Ethnicity, Fall 2024

Ethnicity	Men		Women		Total
	Number	Percent	Number	Percent	
American Indian/Alaska Native	2	66.7%	1	33.3%	3
Asian	23	51.1%	22	48.9%	45
Black or African American	12	44.4%	15	55.6%	27
Hispanic/Latino	6	37.5%	10	62.5%	16
Native Hawaiian or Other Pacific Islander	1	100.0%	0	0.0%	1
Nonresident Alien	9	60.0%	6	40.0%	15
Unknown	3	75.0%	1	25.0%	4
Two or more races	3	100.0%	0	0.0%	3
White	115	42.1%	158	57.9%	273
Total	174	45.0%	213	55.0%	387

[†]Employee data as of November 1, 2024.

Source: VSU Human Resources, 2024. Analysis by VSU SRA, 20245

Full-Time Instructional Faculty by Ethnicity and Gender, Fall 2024



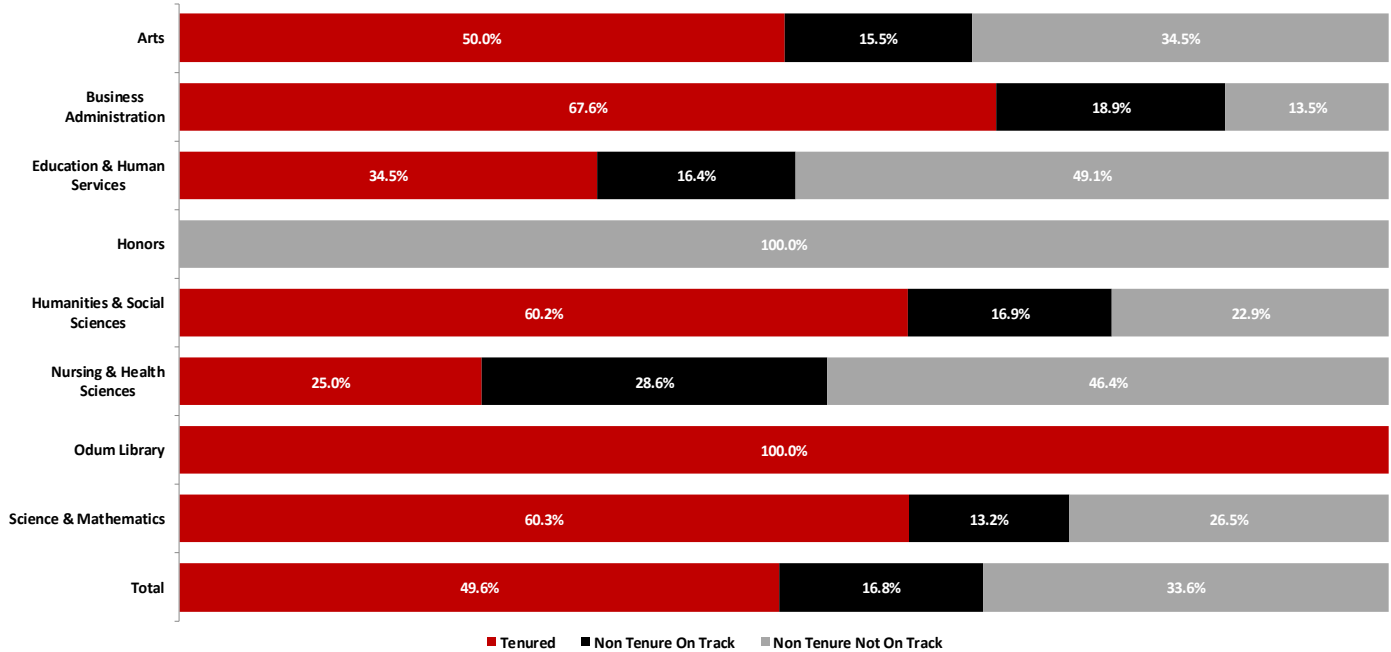
Source: VSU Human Resources, 2024. Analysis by VSU SRA, 2025.

Full-Time Instructional Faculty[†] by Tenure Status

Term	Tenured		Non-tenured, On Tenure Track		Non-tenure Track		Total
	Number	Percent	Number	Percent	Number	Percent	Number
Fall 2020	226	55.0%	67	16.3%	118	28.7%	411
Fall 2021	222	53.5%	78	18.8%	115	27.7%	415
Fall 2022	212	53.5%	78	19.7%	106	26.8%	396
Fall 2023	204	52.6%	71	18.3%	113	29.1%	388
Fall 2024	192	49.6%	65	16.8%	130	33.6%	387

[†]Employee data as of November 1, 2024.
 Source: VSU Human Resources, 2024. Analysis by VSU SRA, 2025.

Full-time Instructional Faculty by Tenure Status and College, Fall 2024



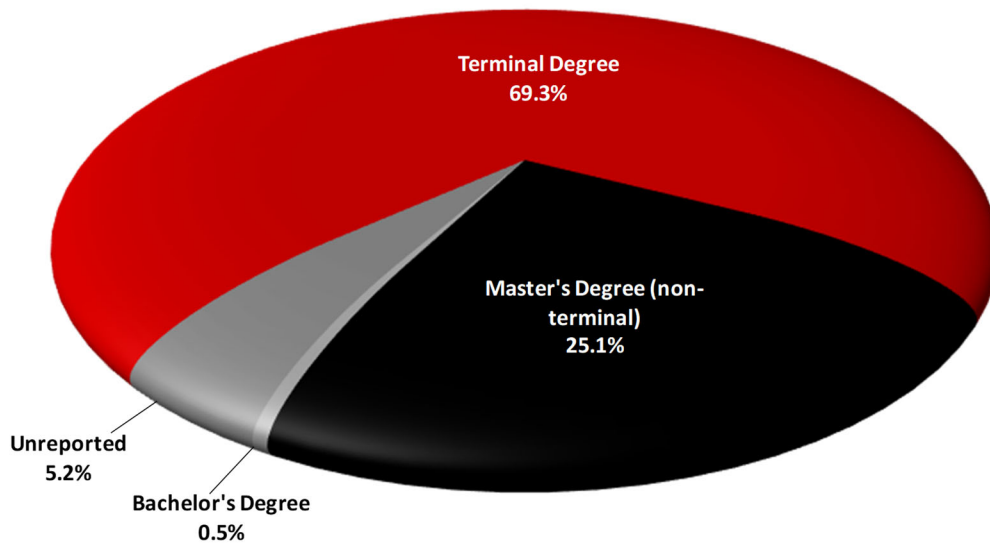
Source: VSU Human Resources, 2024. Analysis by VSU SRA, 2025.

Full-time Instructional Faculty[†] by Highest Degree

Highest Degree	Fall 2020	Fall 2021	Fall 2022	Fall 2023	Fall 2024
Terminal Degree	287	297	283	276	268
Master's Degree (non-terminal)	115	109	99	96	97
Bachelor's Degree	4	3	3	2	2
Unreported	5	6	11	14	20
Total	411	415	396	388	387

[†]Employee data as of November 1, 2024.
 Source: VSU Human Resources, 2024. Analysis by VSU SRA, 2025.

Full-time Instructional Faculty by Highest Degree, Fall 2024



Source: VSU Human Resources, 2024. Analysis by VSU SRA, 2025.

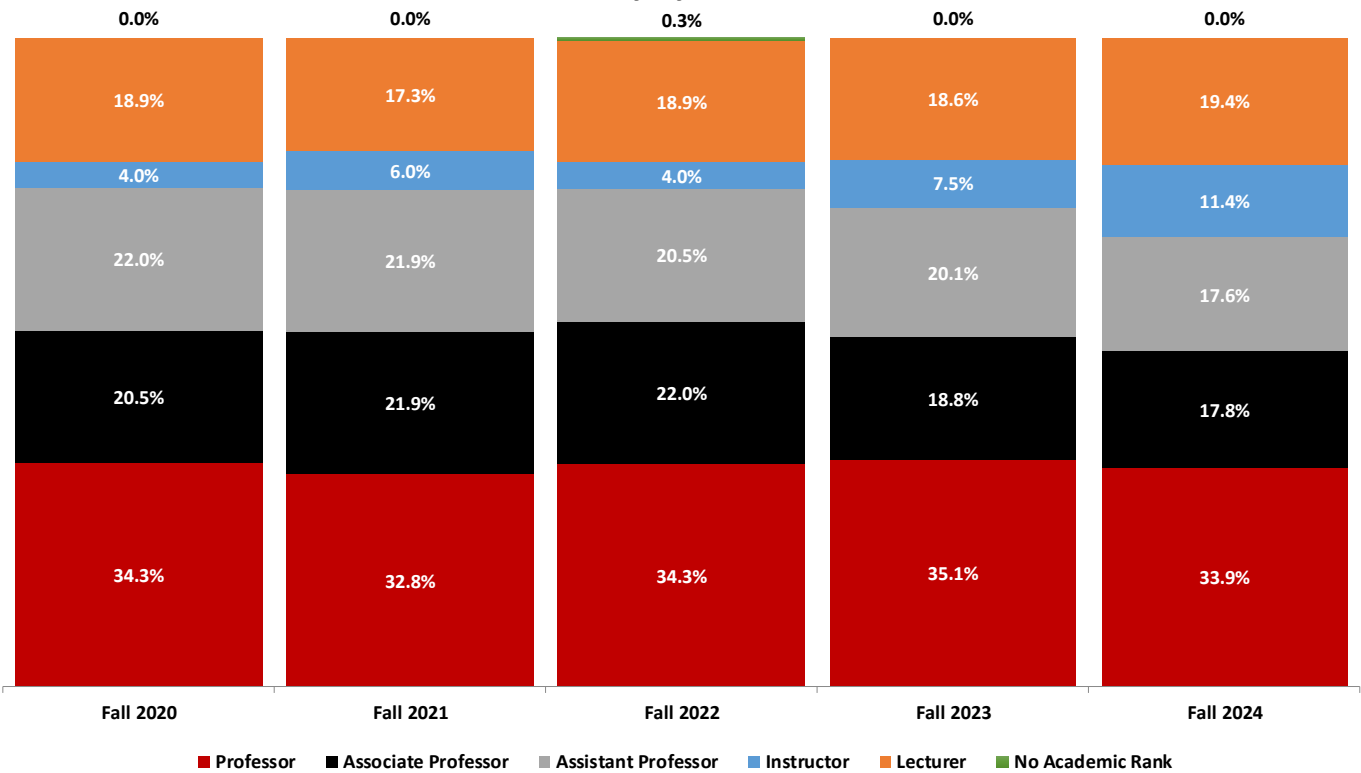
Full-time Instructional Faculty[†] by Gender and Academic Rank, Fall 2024

Faculty Rank	Men		Women		Total
	Number	Percent	Number	Percent	
Professor	82	62.6%	49	37.4%	131
Associate Professor	29	42.0%	40	58.0%	69
Assistant Professor	29	42.6%	39	57.4%	68
Instructor	7	15.9%	37	84.1%	44
Lecturer	27	36.0%	48	64.0%	75
No Rank	-	0.0%	-	0.0%	-
Total	174	45.0%	213	55.0%	387

[†]Employee data as of November 1, 2024.

Source: VSU Human Resources, 2024. Analysis by VSU SRA, 2025.

Full-time Instructional Faculty by Academic Rank, Fall 2020-2024



Source: VSU Human Resources, 2020-2024. Analysis by VSU SRA, 2025.

Graduate Assistants[†] by Gender

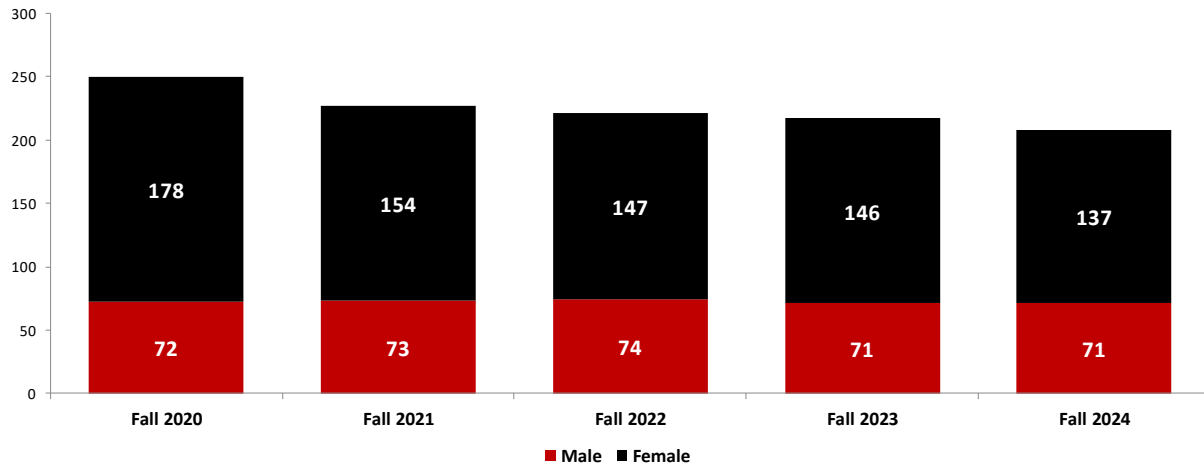
Gender	Fall 2020	Fall 2021	Fall 2022	Fall 2023	Fall 2024
Male	72	73	74	71	71
Female	178	154	147	146	137
Total	250	227	221	217	208

[†] Employee data as of November 1, 2024.

Source: VSU Human Resources, 2020-2024. Analysis by VSU SRA, 2025.

**In Fall 2024,
65.9% of the graduate assistants
employed at VSU were female.**

Graduate Assistants by Gender, Fall 2020-2024



Source: VSU Human Resources, 2020-2024. Analysis by VSU SRA, 2025.

Financial Information



Financial Information

- **Total Sources of Funding**
- **Operating Revenue by Source**
- **Non-operating Revenues (Expenses) by Source**
- **Operating Expenditures by Classification**
- **Operating Expenditures by Functional and Natural Classification**
- **Operating Expenditures per Equivalent Full-time Student**

Quick Facts about VSU's Finances:

- VSU earned 24.3% of its income from tuition and 35.9% from state appropriations in FY2024.
- Grants and contracts revenue was approximately \$3.92 million.
- Education and general expenditures per FTE student was \$14,267.

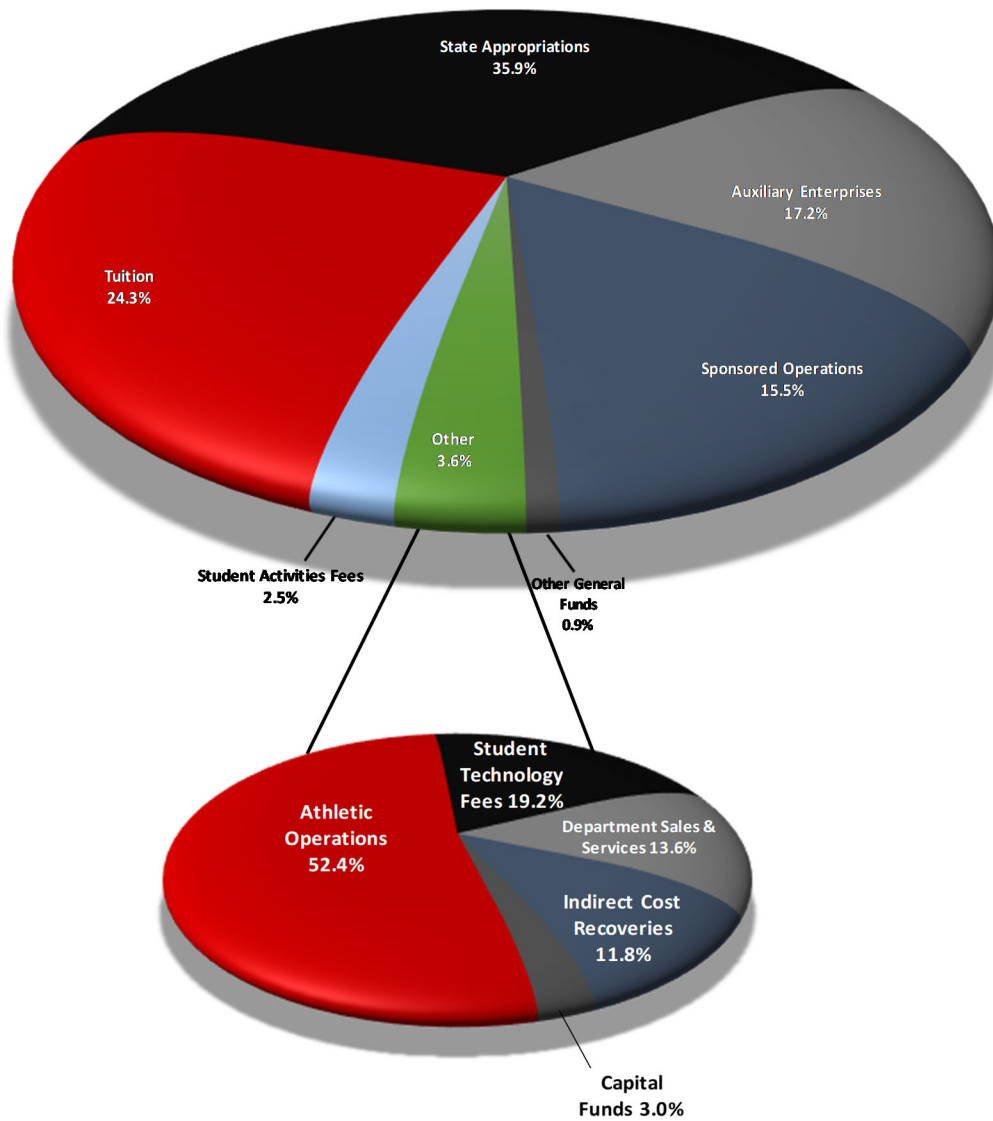
Note: Cover photo courtesy of Valdosta State Instagram.

VSU's Total Sources of Funding, FY2024

Type	Amount	Type	Amount
Tuition	\$ 45,327,515	Athletic Operations	\$ 3,548,774
State Appropriations	\$ 66,904,641	Capital Funds	\$ 200,000
Auxiliary Enterprises	\$ 32,083,310	Student Technology Fees	\$ 1,302,340
Sponsored Operations	\$ 28,978,515	Indirect Cost Recoveries	\$ 800,000
Other General Funds	\$ 1,746,628	Department Sales & Service	\$ 924,765
Student Activities Fees	\$ 4,571,864	Total	\$ 186,388,352

Source: VSU Financial Services, FY2024.

VSU's Total Sources of Funding, FY2024



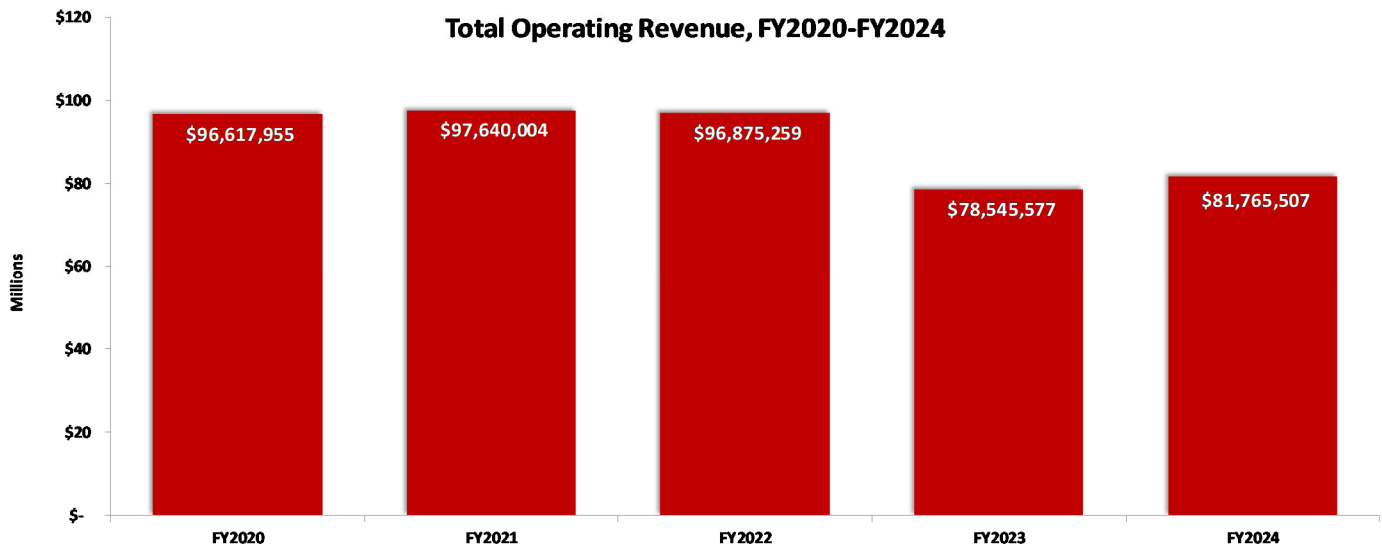
Source: VSU Financial Services, FY2024. Analysis by VSU SRA, 2025.

Operating Revenue by Source

Source	FY2020	FY2021	FY2022	FY2023	FY2024
Student Tuition and Fees	\$ 60,696,891	\$ 58,420,641	\$ 57,819,889	\$ 43,742,403	\$ 43,109,343
Less: Scholarship Allowances	\$ -	\$ -	\$ -	\$ -	\$ -
Grants and Contracts Total	\$ 3,259,808	\$ 2,760,571	\$ 3,048,312	\$ 3,056,573	\$ 3,921,430
Federal	\$ 1,281,780	\$ 1,015,944	\$ 1,468,173	\$ 1,399,843	\$ 1,766,964
Federal Stimulus	\$ -	\$ -	\$ -	\$ -	\$ -
State	\$ 161,496	\$ 115,964	\$ 93,555	\$ 26,623	\$ 530,731
Other	\$ 1,816,532	\$ 1,628,663	\$ 1,486,584	\$ 1,630,107	\$ 1,623,735
Sales and Services of Educational Departments	\$ 704,308	\$ 315,477	\$ 848,060	\$ 1,277,225	\$ 1,186,876
Rents and Royalties	\$ 665,161	\$ 647,847	\$ 696,760	\$ 740,148	\$ 798,480
Auxiliary Enterprises Total	\$ 30,582,737	\$ 35,101,790	\$ 34,203,522	\$ 29,011,033	\$ 30,250,023
Residence Halls	\$ 10,975,371	\$ 13,861,704	\$ 13,087,652	\$ 11,168,319	\$ 11,599,120
Bookstore	\$ 1,320,794	\$ 2,041,361	\$ 2,242,576	\$ 1,953,099	\$ 2,090,682
Food Services	\$ 8,023,194	\$ 9,202,871	\$ 8,533,277	\$ 6,835,299	\$ 7,241,326
Parking/Transportation	\$ 4,238,523	\$ 4,016,209	\$ 3,920,530	\$ 3,747,795	\$ 3,625,996
Health Services	\$ 2,653,098	\$ 2,713,656	\$ 2,604,841	\$ 2,203,448	\$ 1,959,524
Intercollegiate Athletics	\$ 2,923,538	\$ 2,902,642	\$ 3,252,048	\$ 2,716,061	\$ 2,858,943
Other Organizations	\$ 448,219	\$ 363,347	\$ 562,598	\$ 387,012	\$ 874,432
Other Operating Revenue	\$ 709,050	\$ 393,678	\$ 258,716	\$ 718,195	\$ 2,499,355
Total Operating Revenue	\$ 96,617,955	\$ 97,640,004	\$ 96,875,259	\$ 78,545,577	\$ 81,765,507

Note: The University's financial reporting presented herein has been adjusted for compliance with Governmental Accounting Standards Board Statements 34 and 35. Additionally, Senate Bill 73 allowed the carryover of certain types of fund in the State of Georgia. Examples include Indirect Earnings from Grants and Contracts and Student Technology Fees. This presentation does not include the activity of these types of funds.

Source: Georgia Department of Audits and Accounts, FY2020-FY2024. Analysis by VSU SRA, 2025.



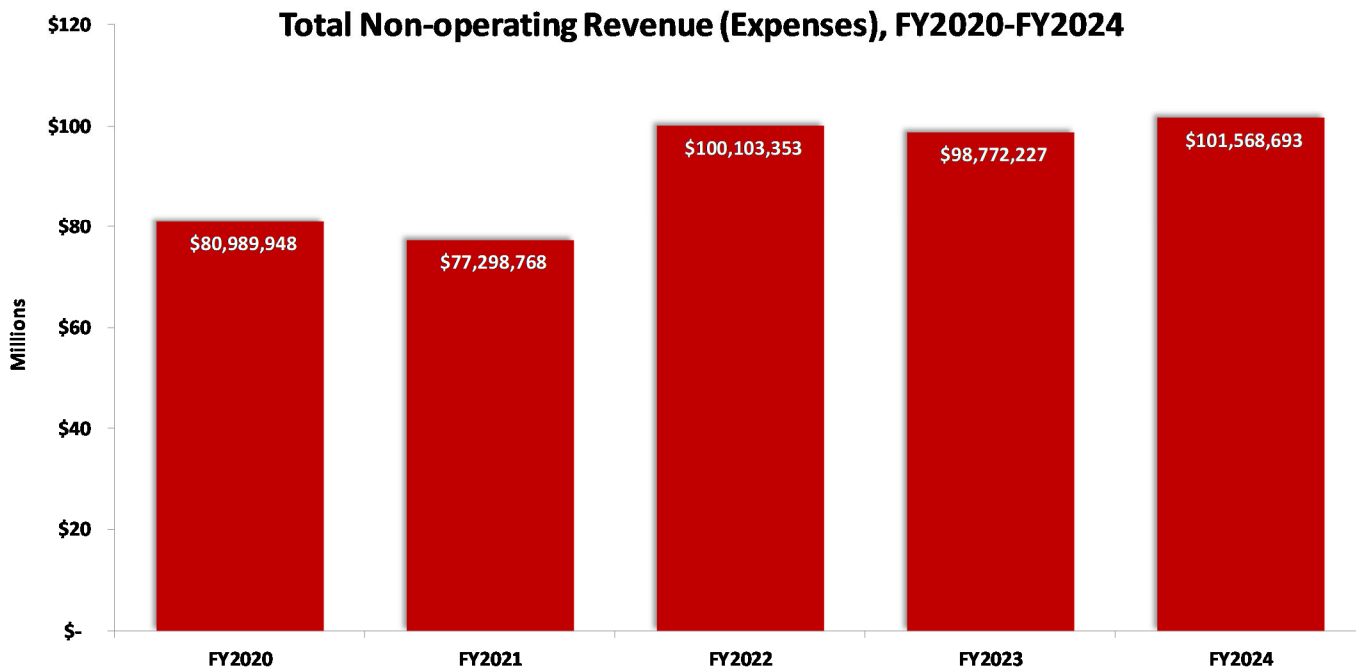
Source: Georgia Department of Audits and Accounts, FY2020-FY2024. Analysis by VSU SRA, 2025.

Non-operating Revenues (Expenses) by Source

Source	FY2020	FY2021	FY2022	FY2023	FY2024
State Appropriations	\$ 51,584,515	\$ 42,541,194	\$ 53,757,666	\$ 67,876,771	\$ 70,069,086
Federal Stimulus-Stabilization Funds	\$ -	\$ -	\$ -	\$ -	\$ -
Grants and Contracts Total	\$ 34,015,403	\$ 37,215,373	\$ 52,162,750	\$ 33,531,682	\$ 25,719,223
Federal	\$ 33,805,242	\$ 36,955,487	\$ 51,948,502	\$ 33,319,557	\$ 25,519,682
Federal Stimulus	\$ -	\$ -	\$ -	\$ -	\$ -
State	\$ 76,313	\$ 138,290	\$ 73,911	\$ 92,181	\$ 115,621
Other	\$ 133,848	\$ 121,596	\$ 140,337	\$ 119,944	\$ 83,920
Gifts	\$ 1,014,655	\$ 359,619	\$ 739,463	\$ 1,146,594	\$ 6,490,117
Interest and Other Investment Income	\$ 447,851	\$ 2,762,986	\$ (1,395,905)	\$ 1,752,637	\$ 3,712,937
Interest Expense	\$ (6,076,461)	\$ (5,577,932)	\$ (5,321,211)	\$ (4,941,010)	\$ (4,683,653)
Other Non-operating Revenues/Expenses	\$ 3,985	\$ (2,472)	\$ 160,590	\$ (594,447)	\$ 260,983
Total	\$ 80,989,948	\$ 77,298,768	\$ 100,103,353	\$ 98,772,227	\$ 101,568,693

Note: The University's financial reporting presented herein has been adjusted for compliance with Governmental Accounting Standards Board Statements 34 and 35. Additionally, Senate Bill 73 allowed the carryover of certain types of fund in the State of Georgia. Examples include Indirect Earnings from Grants and Contracts and Student Technology Fees. This presentation does not include the activity of these types of funds.

Source: Georgia Department of Audits and Accounts, FY2020-FY2024. Analysis by VSU SRA, 2025.



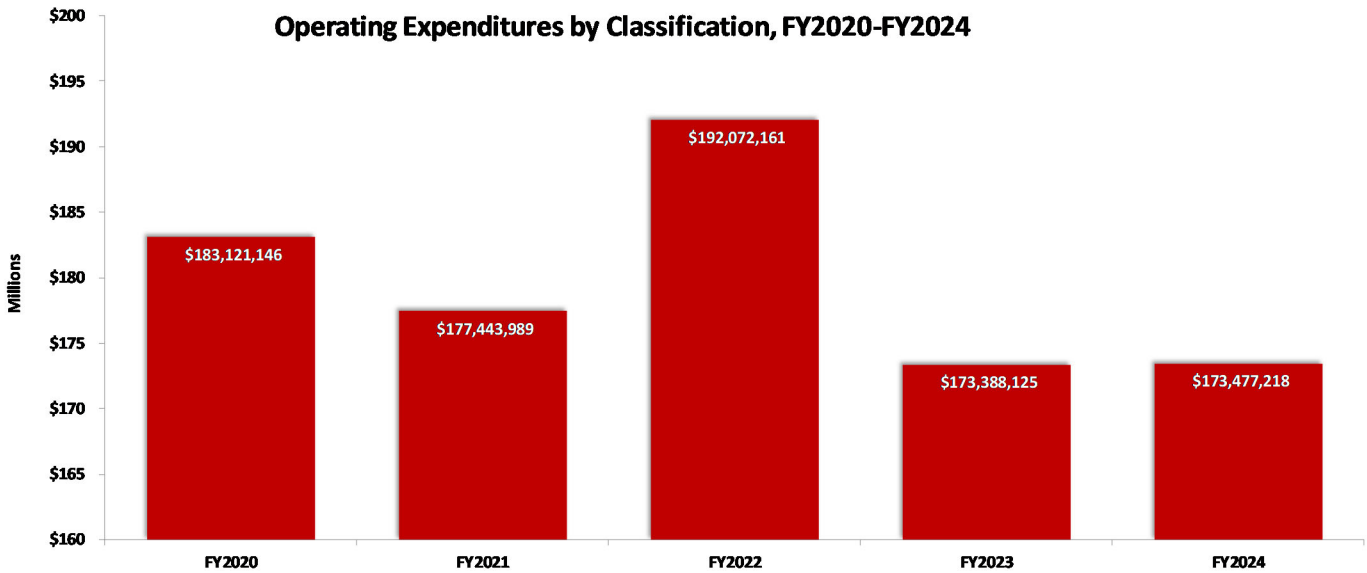
Source: Georgia Department of Audits and Accounts, FY2020-FY2024. Analysis by VSU SRA, 2025.

Operating Expenditures by Classification

Area	FY2020	FY2021	FY2022	FY2023	FY2024
Salaries	\$ 72,897,143	\$ 73,031,856	\$ 74,799,551	\$ 73,315,794	\$ 71,941,774
Faculty	\$ 37,810,510	\$ 38,292,400	\$ 39,992,741	\$ 38,529,239	\$ 38,051,428
Staff	\$ 35,086,633	\$ 34,739,456	\$ 34,806,810	\$ 34,786,555	\$ 33,890,346
Employee Benefits	\$ 33,012,977	\$ 31,421,318	\$ 20,189,958	\$ 25,285,376	\$ 23,004,098
Other Personal Services	\$ 2,225,653	\$ 1,763,295	\$ 390,044	\$ 427,507	\$ 484,457
Travel	\$ 851,965	\$ 123,195	\$ 689,454	\$ 873,940	\$ 866,250
Scholarships and Fellowships	\$ 23,436,435	\$ 19,931,742	\$ 36,125,166	\$ 15,370,539	\$ 16,099,895
Utilities	\$ 4,872,958	\$ 4,800,943	\$ 5,346,179	\$ 5,383,279	\$ 5,351,146
Supplies and Other Services	\$ 29,267,241	\$ 29,629,415	\$ 37,520,700	\$ 36,166,075	\$ 38,380,881
Depreciation	\$ 16,556,774	\$ 16,742,225	\$ 17,011,109	\$ 16,565,615	\$ 17,348,717
Total	\$ 183,121,146	\$ 177,443,989	\$ 192,072,161	\$ 173,388,125	\$ 173,477,218

Note: The University's financial reporting presented herein has been adjusted for compliance with Governmental Accounting Standards Board Statements 34 and 35. Additionally, Senate Bill 73 allowed the carryover of certain types of fund in the State of Georgia. Examples include Indirect Earnings from Grants and Contracts and Student Technology Fees. This presentation does not include the activity of these types of funds.

Source: Georgia Department of Audits and Accounts, FY2020-FY2024. Analysis by VSU SRA, 2025.



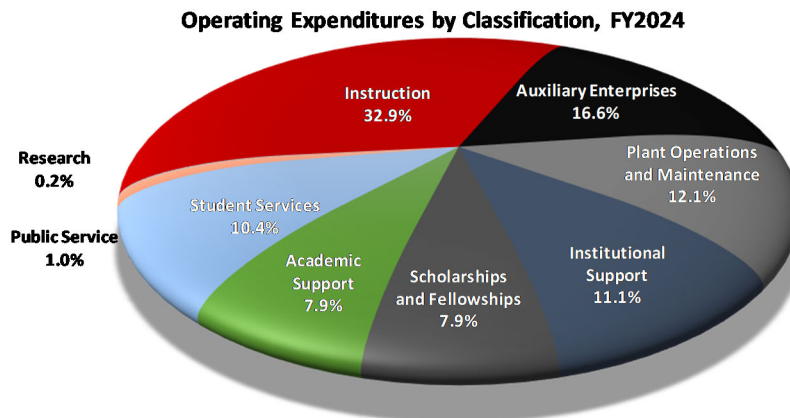
Source: Georgia Department of Audits and Accounts, FY2020-FY2024. Analysis by VSU SRA, 2025.

Operating Expenditures by Functional and Natural Classification, FY2024

Area	Instruction	Research	Public Service	Academic Support	Student Services
Salaries	\$ 40,306,081	\$ 154,915	\$ 761,102	\$ 7,080,437	\$ 7,245,417
Faculty	\$ 36,415,081	\$ 108,434	\$ 78,434	\$ 1,418,363	\$ -
Staff	\$ 3,891,000	\$ 46,481	\$ 682,668	\$ 5,662,074	\$ 7,245,417
Employee Benefits	\$ 11,752,620	\$ 10,298	\$ 231,816	\$ 2,345,871	\$ 2,560,798
Other Personal Services	\$ 13,000	\$ -	\$ -	\$ -	\$ -
Travel	\$ 372,536	\$ 16,295	\$ 34,412	\$ 159,820	\$ 70,722
Scholarships and Fellowships	\$ 401,305	\$ 16,572	\$ 200,000	\$ 2,286	\$ -
Utilities	\$ 93,063	\$ -	\$ 4,280	\$ 27,065	\$ 78,646
Supplies and Other Services	\$ 2,832,891	\$ 70,697	\$ 412,267	\$ 2,965,382	\$ 5,472,759
Depreciation	\$ 1,360,562	\$ 10,724	\$ 4,465	\$ 1,164,941	\$ 2,659,640
Total	\$ 57,132,058	\$ 279,501	\$ 1,648,342	\$ 13,745,802	\$ 18,087,982

Area	Institutional Support	Plant Operations and Maintenance	Scholarships and Fellowships	Auxiliary Enterprises	Total Operating Expenses
Salaries	\$ 8,354,947	\$ 4,562,890	\$ -	\$ 3,475,985	\$ 71,941,774
Faculty	\$ 31,116	\$ -	\$ -	\$ -	\$ 38,051,428
Staff	\$ 8,323,831	\$ 4,562,890	\$ -	\$ 3,475,985	\$ 33,890,346
Employee Benefits	\$ 3,178,993	\$ 1,827,747	\$ -	\$ 1,095,955	\$ 23,004,098
Other Personal Services	\$ 471,457	\$ -	\$ -	\$ -	\$ 484,457
Travel	\$ 62,505	\$ 5,864	\$ -	\$ 144,096	\$ 866,250
Scholarships and Fellowships	\$ -	\$ -	\$ 13,630,750	\$ 1,848,982	\$ 16,099,895
Utilities	\$ 145,404	\$ 3,345,711	\$ -	\$ 1,656,977	\$ 5,351,146
Supplies and Other Services	\$ 5,580,698	\$ 6,301,786	\$ -	\$ 14,744,401	\$ 38,380,881
Depreciation	\$ 1,448,166	\$ 4,921,009	\$ -	\$ 5,779,210	\$ 17,348,717
Total	\$ 19,242,170	\$ 20,965,007	\$ 13,630,750	\$ 28,745,606	\$ 173,477,218

Note: The University's financial reporting presented herein has been adjusted for compliance with Governmental Accounting Standards Board Statements 34 and 35. Additionally, Senate Bill 73 allowed the carryover of certain types of fund in the State of Georgia. Examples include Indirect Earnings from Grants and Contracts and Student Technology Fees. This presentation does not include the activity of these types of funds. Source: Georgia Department of Audits and Accounts, 2024.



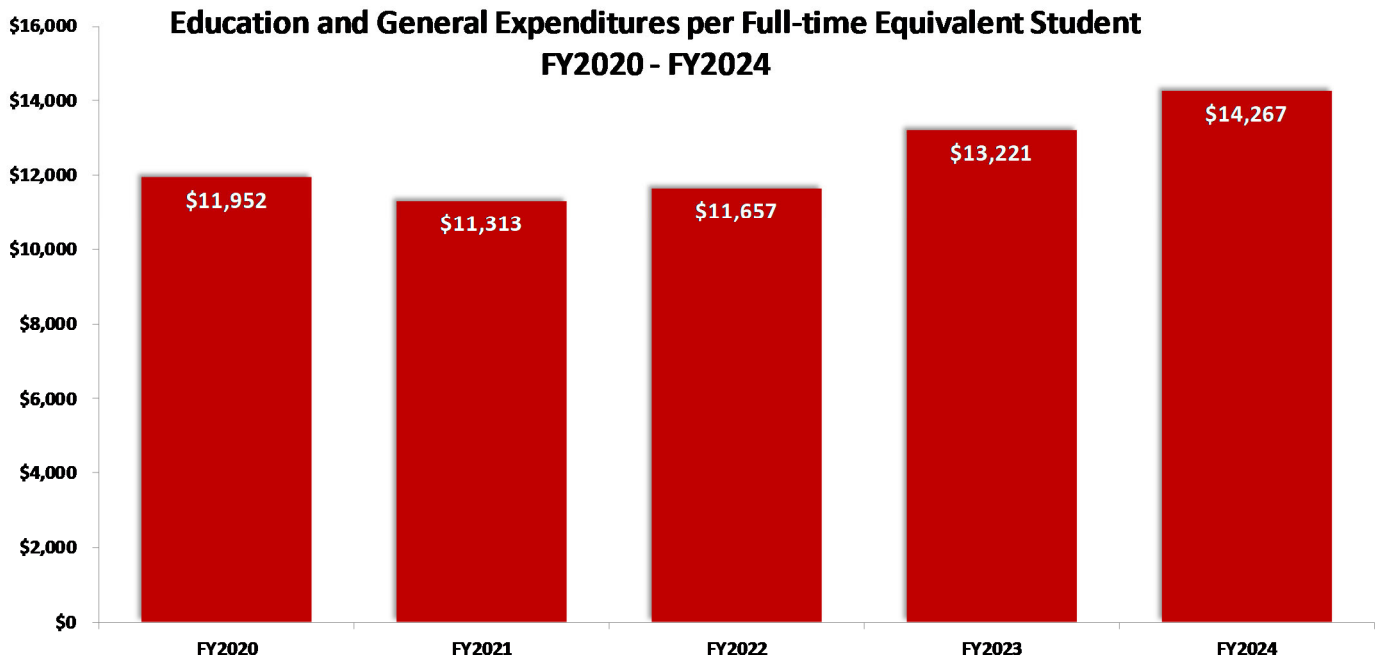
Source: Georgia Department of Audits and Accounts, 2024. Analysis by VSU SRA, 2025.

Operating Expenditures per FTE

Fiscal Year	Educational & General Expenditures	Fall Term Equivalent FTE [†]	Total Educational & General Expenditure per FTE Student
FY2020	\$115,514,656	9,665	\$11,952
FY2021	\$116,887,717	10,332	\$11,313
FY2022	\$113,784,479	9,761	\$11,657
FY2023	\$115,394,991	8,728	\$13,221
FY2024	\$123,183,866	8,634	\$14,267

[†]FTE calculation is derived by total student credit hours earned divided by 30 for undergraduate students and 24 for graduate students.

Source: VSU Finance & Administration AER Report FT2020-FY2024, USG Credit Hour Reports FY2020-FY2024. Analysis by VSU SRA, 2025.



Source: VSU Finance & Administration AER Report FY2020-FY2024. Analysis by VSU SRA 2025.

