

Charles Baudelaire
(1821-1867)

Dr. Theresa Mae Thompson
English 2130
Fall 2009

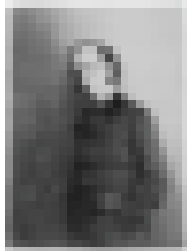
Terms:

- + Ennui: pathological boredom
- + Analogy: A resemblance or likeness between things in some circumstances or effects
 - + Analogous imagery in "Spleen LXXIX"
- + (French) Symbolism (p. 1076-7)
- + Sonnet forms: Petrarchan & Shakespearean
- + Realism: representation w/o idealization; "truth of representation"
- + Synesthesia: fusion of senses

Charles Baudelaire's poetry

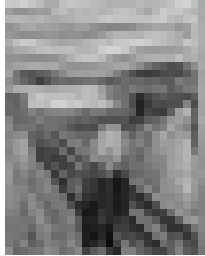
- + Embraces the opposites of human existence. (1380)
- + synaesthetic analogies (1384: "like the poor lush...")
- + Symbols: "open-ended in their power to signify & polyvalent (multi-layered) in their reception" (1385: nature)
- + Unrelenting realistic detail (1384)

Biography



"Les fleurs du Mal" (The Flowers of Evil)

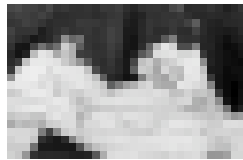
- + Sin: active participation in evil itself, from which we do not shrink but drink (1384:4-8)
- + Ennui is the worst evil (1385-5:33-40)
- + Have to ask ourselves: why is boredom an "abortive birth"? Why is ennui the worst of the flowers of evil?



Edvard Munch, "The Scream"

"A Carcass"

- + Idealized love imagery juxtaposed to harsh realism of female body (1386-7:1-12; 1387:23-27)
- + Compares his love to dead whore (1387:37-41)
- + Synaesthetic analogy



Edouard Manet, "Olympia"

"Spleen LXXIX" (p. 1390)

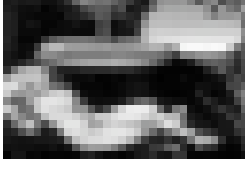
- + Analogous imagery
 - + Memories analogous to tomb
 - + Ennui analogous to immortality
 - + Life analogous to "cold stone encompassed by fear"
 - + Beauty ignored, unseen (sphinx)
- + Power of ennui
 - + Does poet need Zoloft or Prozac?

Romantic (idealized) Love Imagery

1. It is a beauteous evening, calm and free,
2. The holy time is quiet as a Nun
3. Breathless with adoration, the broad sun
4. Is sinking down in its tranquillity;
5. The golden oracles of heaven broods
6. O'er the Sea;
7. Listen! the mighty Being is awake,
8. And doth with his eternal motion
9. A sound like thunder everlastingly
10. Declare his glory round about the globe,
11. And thou its echo in his voice dost make.
12. Thy nature is not therefore less divine,
13. Thou hast in Abraham's bosom all
14. The Saviour's heart, and worshipping'st at the Temple's
15. Inner shrine,
16. God being with thee when we know
17. It not.

William Wordsworth

Petrarchan Sonnet Form



Lucas CRANACH the Elder: "The Nymph at the Fountain"

Shakespearean sonnet

- + Shall I compare thee to a summer's day?
- + Thou art more lovely and more temperate:
- + Rough winds do shake the darling buds of May,
- + And summer's lease hath all too short a date:...
- + And every fair from fair sometimes declines....
- + But thy eternal summer shall not fade,
- + Nor lose possession of that fair thou ow'st;
- + Nor shall death brag thou wonder'st in his shade,
- + When in eternal lines to time thou grow'st:..

Shakespeare

Obviously a Shakespearean sonnet...

Realism: "Correspondences"

- ✦ Modified Shakespearean sonnet:
 - ✦ Rhyme scheme: abba, cddc, cec eff
- ✦ Plays with Romantic idea of poet's ability to interpret nature.
 - ✦ Juxtaposes nature against our response to nature (line 11)
