
STUDENT INFORMATION

- Profile of Students
- College Enrollment
- Enrollment by Full-Time & Part-Time Students
- SAT Scores
- Grade Point Averages
- Headcount & Full-Time Enrollment
- Transfer Students
- Enrollment by States & Georgia Counties
- One Year Retention Rates
- Multiple Year Retention Rates
- Student Financial Aid
- Admissions Application Statistics
- Continuing Education Programs
- Off-Campus Programs

-
- ▶ Enrollment for fall quarter 1996 was 9,816, which was a two percent increase over fall quarter 1995.
 - ▶ New students totaled 2,883 in Fall of 1996 which was a five percent increase from 1995.
 - ▶ The average age of undergraduates is 23, and graduate students average 34 years of age.
 - ▶ The student body is a diverse group. Females represent the majority of the student body at sixty-one percent. Twenty-four percent of the students are self declared minorities.
 - ▶ Georgians comprise eighty-nine percent of the total enrollment, Floridians account for six percent, and International students represent one percent.
 - ▶ Students come from 147 of the 159 counties in the state, 47 states, 1 U.S. territory, and many countries.
 - ▶ In FY 1997, over \$42 million in student financial aid was distributed.



PROFILE OF STUDENT BODY - FALL QUARTERS 1993 THROUGH 1996

	FALL 1993	FALL 1994*	FALL 1995**	FALL 1996***
TOTAL ENROLLMENT	8 7 1 3	9 1 6 0	9 6 3 6	9 8 1 6
Classification				
Freshman	1906	1945	2178	2185
Sophomore	1408	1571	1582	1647
Junior	1543	1562	1699	1502
Senior	1835	1895	1992	2311
Graduate	1288	1423	1445	1329
Developmental Studies	707	727	712	813
Transient	26	37	28	29
Geographic Location				
Georgia Residents	7565	7906	8398	8739
Out-of-state	1051	1137	1107	943
Foreign	97	117	129	134
Sex				
Male	3416	3499	3630	3813
Female	5297	5661	6006	6003
Racial Composition				
White Male	2820	2872	2902	2963
White Female	4096	4370	4574	4482
Black Male	519	539	627	734
Black Female	1099	1169	1285	1362
Other Male	77	88	101	116
Other Female	102	122	147	159
New Students				
Total	2379	2599	2743	2883
Freshmen	1073	1130	1329	1329
Sophomore	217	250	241	221
Junior	251	304	293	255
Senior	34	49	41	61
Graduate	275	287	286	353
Developmental Studies	513	551	532	642
Transient	16	28	21	22
Attendance Status ****				
Full-Time	5878	6512	7077	7764
Part-Time	2020	2201	2083	2039
Status not defined				13

* Increase of 5.13% over Fall 1993

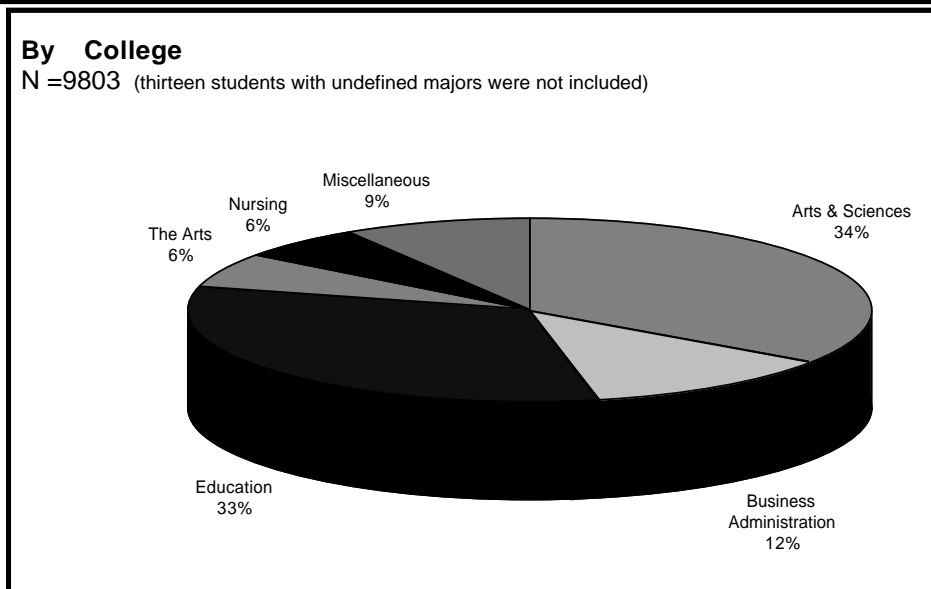
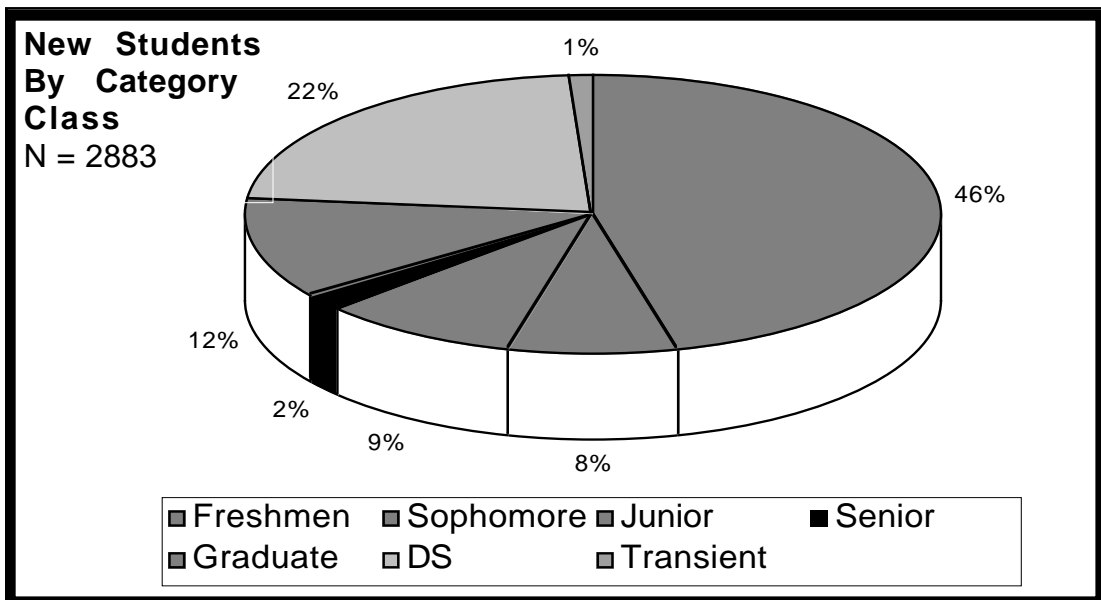
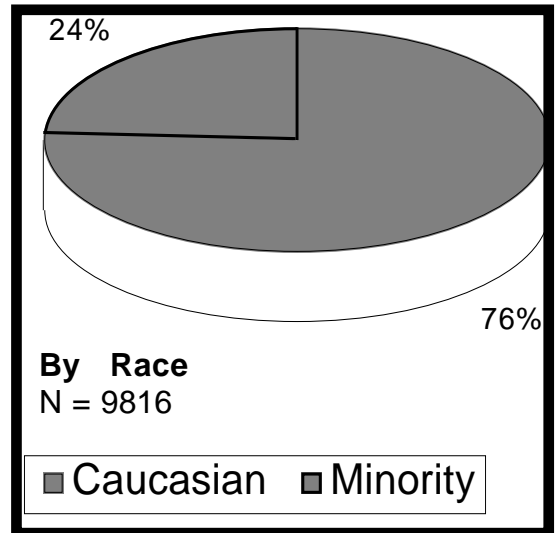
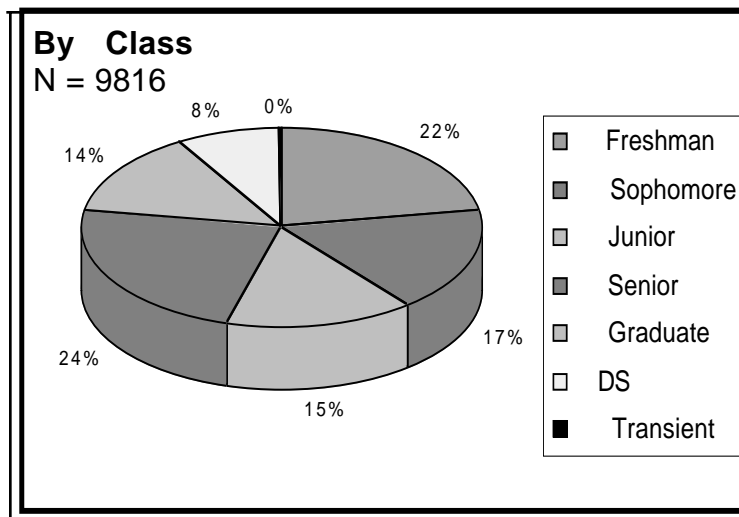
** Increase of 5.20% over Fall 1994

*** Increase of 1.87% over Fall 1995

**** Full-Time defined as 12 credit hours undergraduates, and 10 credit hours for graduates.
10 QCH per quarter for graduate students

The total headcount is based on the VSU Data that excludes students enrolled for zero credit hours and enrolled in the official cooperative work study programs. Remaining data in fact book, however, includes these students.

DISTRIBUTION OF STUDENTS - FALL QUARTER 1996



COLLEGE ENROLLMENT BY QUARTER - FISCAL YEARS 1993/94 THROUGH 1996/97

COLLEGE	FY 1993-94 Number Enrolled	FY 1994-95 Number Enrolled	FY 1995-6 Number Enrolled	FY 1996-7 Number Enrolled
ARTS				
Summer Total	235	228	212	207
Undergraduates	215	201	193	198
Graduates	20	11	19	9
Fall Total	526	548	582	569
Undergraduates	513	535	571	548
Graduates	13	13	11	21
Winter Total	521	534	563	589
Undergraduates	506	524	550	574
Graduates	15	10	13	15
Spring Total	511	527	574	605
Undergraduates	492	514	559	587
Graduates	19	13	15	18
ARTS AND SCIENCES				
Summer Total	1316	1515	1522	1576
Undergraduates	1136	1290	1300	1391
Graduates	180	225	222	185
Fall Total	2891	3084	3389	3405
Undergraduates	2659	2814	3113	3199
Graduates	232	270	276	206
Winter Total	2847	3044	3328	3287
Undergraduates	2583	2764	3055	3083
Graduates	264	280	273	204
Spring Total	2748	2926	3233	3162
Undergraduates	2499	2669	2971	2954
Graduates	249	257	262	208
BUSINESS ADMINISTRATION				
Summer Total	575	530	514	586
Undergraduates	575	529	514	580
Graduates	0	1	0	6
Fall Total	1019	960	989	1192
Undergraduates	987	933	969	1170
Graduates	32	27	20	22
Winter Total	973	985	996	1176
Undergraduates	942	959	975	1155
Graduates	31	26	21	21
Spring Total	928	966	986	1160
Undergraduates	900	940	968	1140
Graduates	28	26	18	20
EDUCATION				
Summer Total	1955	2097	2167	2076
Undergraduates	996	1058	1158	1175
Graduates	959	1039	1009	901
Fall Total	2898	3115	3281	3188
Undergraduates	1946	2082	2229	2240
Graduates	952	1033	1052	948

COLLEGE ENROLLMENT BY QUARTER - FISCAL YEARS 1993/94 THROUGH 1996/97

	FY 1993-94	FY 1994-95	FY 1995-96	FY 1996-97
COLLEGE EDUCATION, CONTINUED	Number Enrolled	Number Enrolled	Number Enrolled	Number Enrolled
Winter Total	2919	3125	3184	3112
Undergraduates	1928	2071	2162	2200
Graduates	991	1054	1022	912
Spring Total	2918	3088	3027	2946
Undergraduates	1875	2046	2052	2105
Graduates	1043	1042	975	841
NURSING				
Summer Total	288	257	281	220
Undergraduates	272	230	238	182
Graduates	16	27	43	38
Fall Total	647	701	660	548
Undergraduates	613	646	597	507
Graduates	34	55	63	41
Winter Total	629	664	623	491
Undergraduates	596	618	570	451
Graduates	33	46	53	40
Spring Total	619	633	551	406
Undergraduates	596	580	509	374
Graduates	23	53	42	32
MISCELLANEOUS*				
Summer Total	195	155	163	160
Undergraduates	183	140	146	116
Graduates	12	15	17	44
Fall Total	732	752	735	900
Undergraduates	707	727	712	813
Graduates	25	25	23	87
Winter Total	567	549	550	610
Undergraduates	545	527	533	528
Graduates	22	22	17	82
Spring Total	409	407	391	478
Undergraduates	387	381	372	399
Graduates	22	26	19	79
TOTAL UNIVERSITY ENROLLMENT				
Summer Total	4564	4782	4859	4825
Undergraduates	3377	3448	3549	3642
Graduates	1187	1318	1310	1183
Fall Total	8713	9160	9636	9803
Undergraduates	7425	7737	8191	8478
Graduates	1288	1423	1445	1325
Winter Total	8456	8901	9244	9266
Undergraduates	7100	7463	7845	7992
Graduates	1356	1438	1399	1274
Spring Total	8133	8547	8762	8758
Undergraduates	6749	7130	7431	7560
Graduates	1384	1417	1331	1198

*Includes Non-degree and Developmental Studies Students

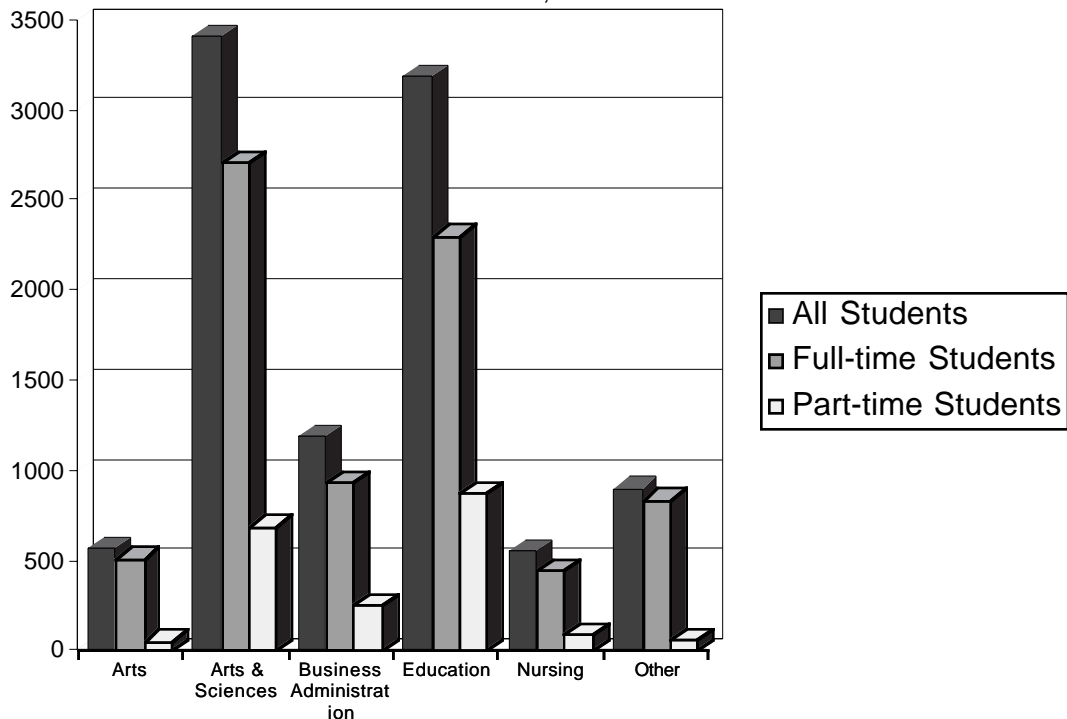
Source: Quarterly Enrollment Analysis; prepared by the Office of the Registrar and the Computer Center of VSU. Some 1996-1997 students included elsewhere have undefined majors and are not included in this table.

1996-1997 FULL-TIME & PART-TIME ENROLLMENT BY COLLEGE

Enrollment for All Students				
COLLEGE	Summer	Fall	Winter	Spring
Arts	207	569	589	605
Arts & Sciences	1576	3405	3287	3162
Business Administration	586	1192	1176	1160
Education	2076	3188	3112	2946
Nursing	220	549	491	407
Other	160	900	610	478
Total	4825	9803	9265	8758

COLLEGE	Full-time Student Enrollment				Part-time Student Enrollment			
	Summer	Fall	Winter	Spring	Summer	Fall	Winter	Spring
Arts	99	514	541	547	108	55	48	58
Arts & Sciences	673	2712	2554	2456	903	693	733	706
Business Administration	286	939	916	903	300	253	260	257
Education	1167	2307	2232	2103	909	881	880	843
Nursing	72	453	403	325	148	96	88	82
Other	94	839	548	404	66	61	62	74
Total	2391	7764	7194	6738	2434	2039	2071	2020

Total, Full-time, & Part-time Enrollment by College - Fall Quarter 1996
based on N = 9,803

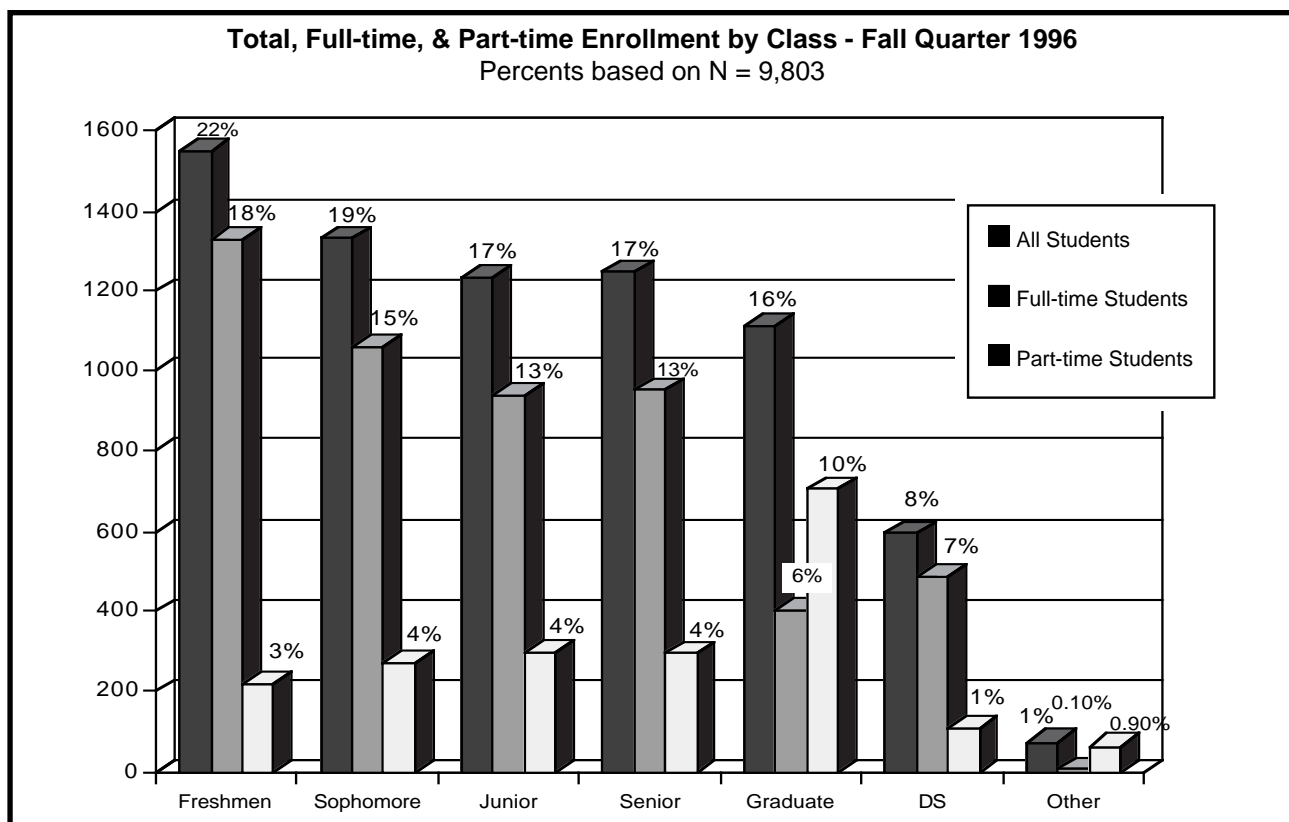


SOURCE: Quarterly Enrollment Analysis Reports, prepared by Office of the Registrar and the Computer Center of VSU.

1996-1997 FULL-TIME & PART-TIME ENROLLMENT BY CLASS

Enrollment for All Students				
CLASS	Summer	Fall	Winter	Spring
Freshmen	416	2184	1852	1716
Sophomore	621	1642	1743	1586
Junior	770	1500	1567	1498
Senior	1633	2308	2265	2328
Graduate	1183	1325	1274	1198
DS	116	813	528	399
Other	86	31	37	31
Total	4825	9803	9266	8756

CLASS	Full-time Student Enrollment				Part-time Student Enrollment			
	Summer	Fall	Winter	Spring	Summer	Fall	Winter	Spring
Freshmen	170	1974	1600	1475	246	210	252	241
Sophomore	244	1369	1447	1287	377	273	296	299
Junior	366	1207	1236	1198	404	293	331	300
Senior	801	1779	1758	1807	832	529	507	521
Graduate	730	660	666	625	453	665	608	573
DS	66	763	476	338	50	50	52	61
Other	14	12	11	6	72	19	26	25
Total	2391	7764	7194	6736	2434	2039	2072	2020



SOURCE: Quarterly Enrollment Analysis Reports, prepared by Office of the Registrar and the Computer Center of VSU.

**SCHOLASTIC APTITUDE TEST SCORES
FALL QUARTERS 1994 THROUGH 1996**

**GRADE POINT AVERAGES
FALL QUARTERS 1994 THROUGH 1996**

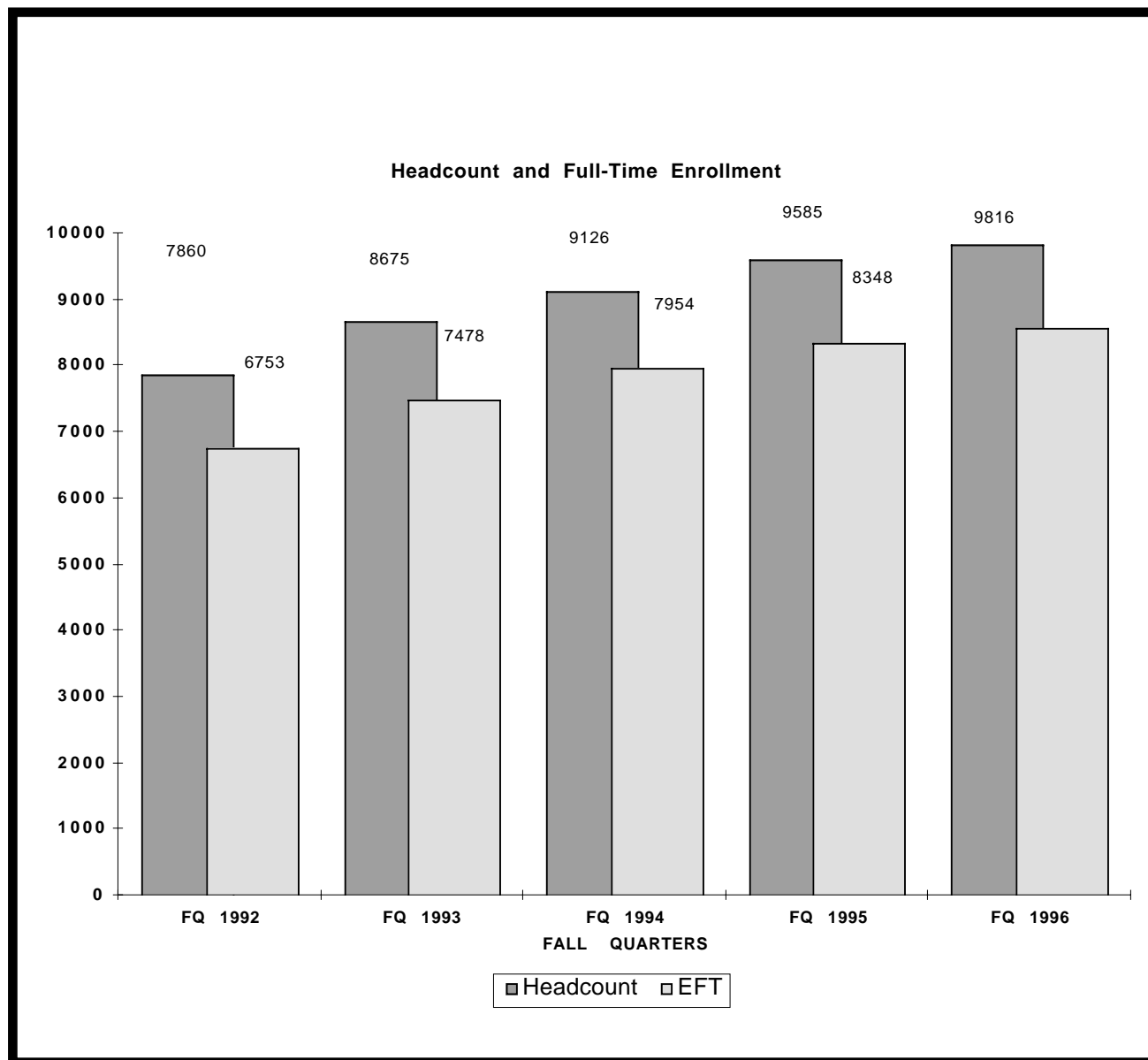
AVERAGE SCHOLASTIC APTITUDE TEST (SAT) SCORES												
CLASSIFICATION	FALL 1994				FALL 1995				FALL 1996			
	N	Verbal	Math	Total	N	Verbal	Math	Total	N	Verbal	Math	Total
VSU Undergrads.	4467	399	438	837	4739	402	439	841	5447	479	470	949
COLLEGES												
Arts	343	418	442	860	376	421	448	869	373	500	479	979
Arts & Sciences	1871	412	454	866	2060	414	455	870	2218	491	484	975
Business Admin.	489	397	460	857	493	406	465	871	649	485	496	981
Education	942	400	433	833	1002	401	432	833	1298	497	467	943
Nursing	321	396	430	826	285	400	429	829	269	483	460	943
Miscellaneous	501	341	368	709	523	341	363	704	640	419	402	821
SEX												
Males	1896	402	455	857	3630	407	458	865	2269	482	484	966
Females	2571	397	426	823	6006	399	425	824	3178	476	460	936

GRADE POINT AVERAGES (GPA)												
CLASSIFICATION	FALL 1994				FALL 1995				FALL 1996			
	Undergraduate		Graduate		Undergraduate		Graduate		Undergraduate		Graduate	
	N	GPA	N	GPA	N	GPA	N	GPA	N	GPA	N	GPA
All VSU Students	7737	2.69	1423	3.68	8191	2.72	1445	3.7	8478	2.76	1325	3.69
COLLEGES												
Arts	535	2.69	13	3.87	571	2.71	11	3.81	548	2.72	21	3.59
Arts & Sciences	2814	2.55	270	3.43	3113	2.57	276	3.54	3199	2.59	206	3.56
Business Admin.	933	2.6	27	3.52	969	2.67	20	0	1170	2.72	22	3.46
Education	2082	2.84	1033	3.72	2229	2.86	1052	3.72	2240	2.9	948	3.71
Nursing	646	2.9	55	3.75	597	2.94	63	3.81	508	3.01	41	3.75
Miscellaneous	727	1.89	25	3.67	712	1.95	23	3.78	813	2.13	87	3.63
SEX												
Males	3121	2.58	378	3.55	3271	2.61	359	3.65	3456	2.63	357	3.66
Females	4616	2.76	1045	3.72	4920	2.79	1086	3.72	5031	2.84	972	3.69

NOTE: These SAT scores represent recentered scores and are therefore can not be compared to SAT scores from previous years.
NOTE: Some numbers may not match precisely due to computer system changeover.

GPA excludes students who have not completed any work during the Fall quarter.
SOURCE: Quarterly Enrollment Analysis Reports, prepared by Office of the Registrar and the Computer Center of VSU.

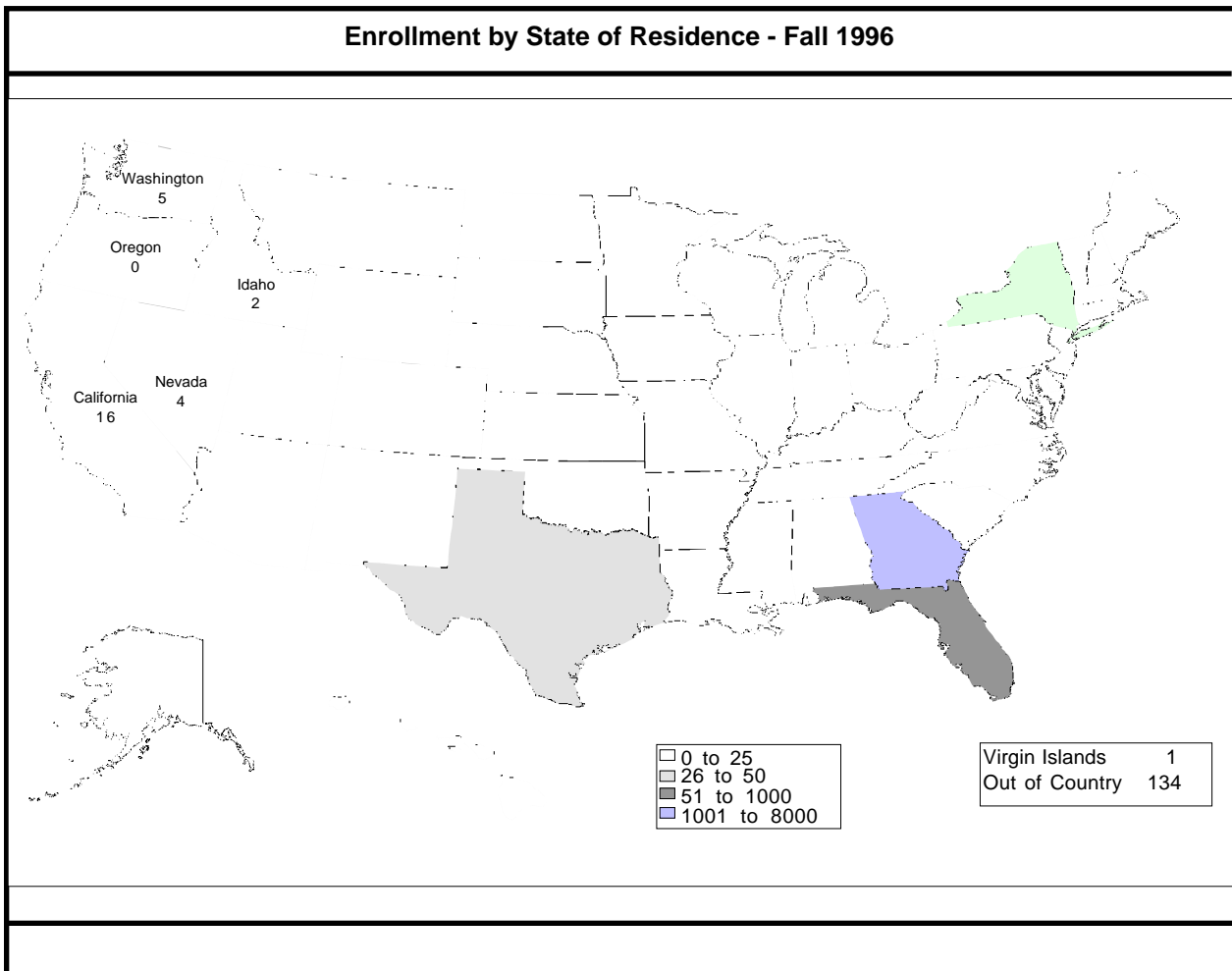
**HEADCOUNT AND EQUIVALENT FULL-TIME ENROLLMENT
FALL QUARTERS 1992 THROUGH 1996**



Note: FTE Fall 1996 is the number reported in the Quarterly Enrollment Analysis. Headcount Fall 1996 is from revised data tables.

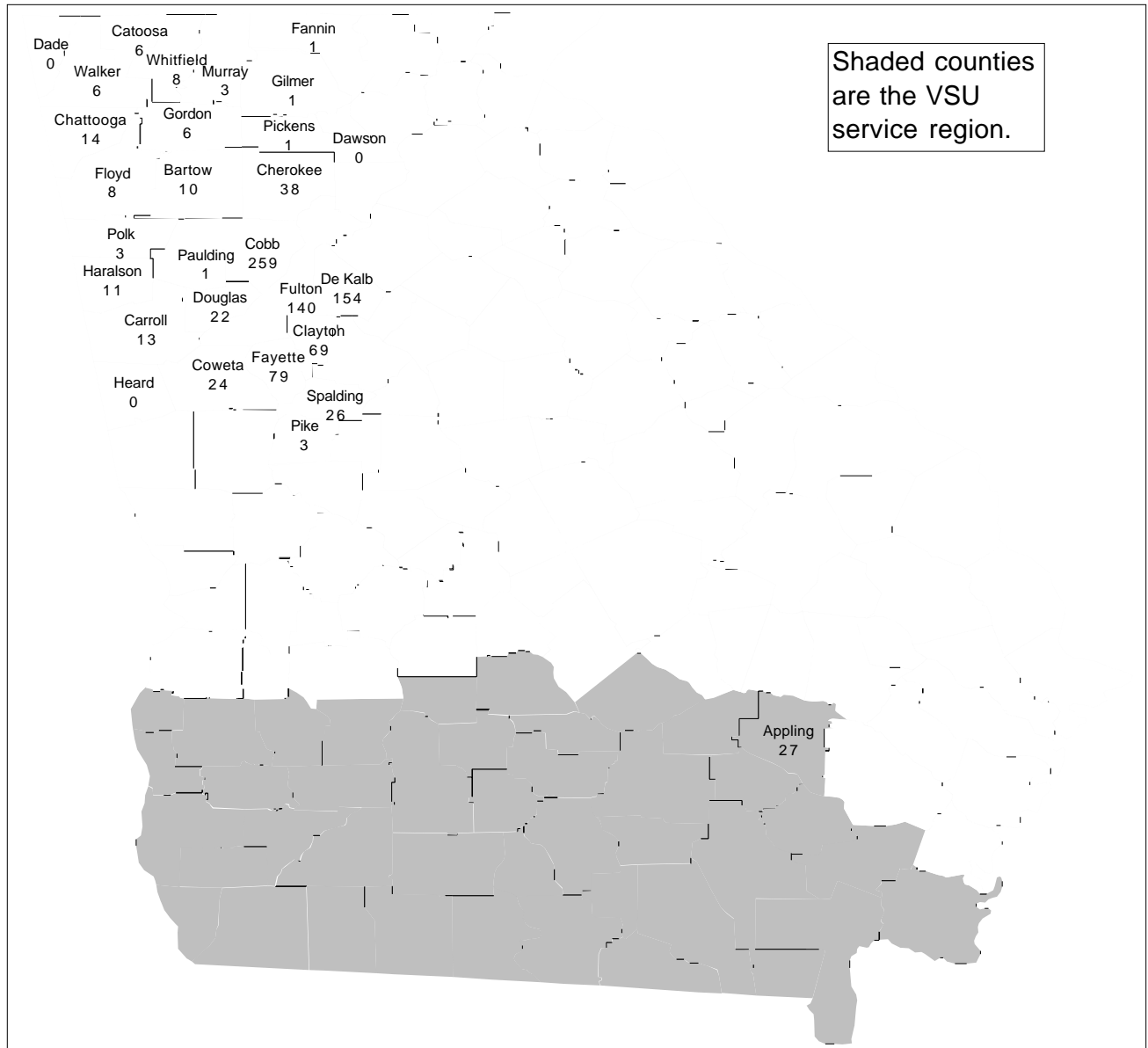
Undergraduate Transfer Students to Valdosta State University							
Public Four-year Institutions	FY 1994	FY 1995	FY 1996	Public Two-year Institutions	FY 1994	FY 1995	FY 1996
Ga. Inst. of Technology	6	4	7	Abraham Baldwin Agricultural College	10	136	128
Ga. State University	9	11	4	Atlanta Metropolitan College	3	1	1
Medical College of Ga.	1	1	0	Bainbridge College	7	47	52
University of Georgia	27	29	37	* Coastal Georgia Comm. College	1	21	24
* Albany State University	17	28	14	Dalton College	1	3	3
* Armstrong Atlantic St. University	5	10	12	Darton College	79	49	64
* Augusta State University	0	5	5	Dekalb College	8	23	24
* Clayton College and St. University	4	0	0	East Georgia College	1	3	5
* Columbus State University	5	9	10	Floyd College	0	4	6
* Ft. Valley St. University	14	8	6	Gainesville College	0	4	5
* Georgia College and St. University	13	16	8	Gordon College	1	17	14
Ga. Southern University	42	40	39	* Macon State College	0	36	19
* Ga. Southwestern St. University	11	15	14	Middle Georgia College	1	32	29
* Kennesaw State University	0	12	6	South Georgia College	1	108	88
* North Georgia College and State U.	0	3	2	Waycross College	0	62	70
* Savannah State University	0	2	11	Two-year College TOTAL	113	546	532
* Southern Polytechnic St. University	21	0	0	Non-Ga. System Inst.	174	221	182
* State U. of West Georgia	8	8	6	Out-of-state transfers	434	420	348
Four-year College TOTAL	183	201	181	TOTAL TRANSFERS	904	1388	1243

* Note: The name of these institutions have changed since the 1996 Factbook



SOURCE: Transfer Data from University System of Georgia 1993-94, 1995-1997 [Information Digest](#), and the University System of Georgia 1994-1995 Undergraduate Student Transfer Report. Enrollment Data from Quarterly Enrollment Analysis Reports, prepared by Office of the Registrar and the Computer Center of VSU.

ENROLLMENT BY GEORGIA COUNTIES - FALL QUARTER 1996



**ONE YEAR RETENTION RATES, FULL-TIME, FIRST-TIME ENTERING STUDENTS BY RACE,
FALL QUARTER TO FALL QUARTER, 1991/92 TO 1994/95 COMPARISON OF SYSTEM AND VSU RATES**

		Number Enrolled Fall 1991	Number Enrolled At VSU Fall 1992	Number Graduated From VSU Fall 1992	Number Graduated From Other System Units Fall 1992	Number Transferred To Other System Units Fall 1992	VSU Retention Rates (B+C/A)	System- wide Retention Rates (B+C+D+E/A)
		A	B	C	D	E	F	G
DS	B	128	79	0	0	5	61.7%	65.6%
	AO	217	122	0	0	24	56.2%	67.3%
	TOT	345	201	0	0	29	58.3%	66.7%
FRESH	B	99	77	0	0	4	77.8%	81.8%
	AO	530	376	0	0	58	70.9%	81.9%
	TOT	629	453	0	0	62	72.0%	81.9%
TOTAL CLASS	B	227	156	0	0	9	68.7%	72.7%
	AO	747	498	0	0	82	66.7%	77.6%
	TOT	974	654	0	0	91	67.1%	76.5%

		Number Enrolled Fall 1992	Number Enrolled At VSU Fall 1993	Number Graduated From VSU Fall 1993	Number Graduated From Other System Units Fall 1993	Number Transferred To Other System Units Fall 1993	VSU Retention Rates (B+C/A)	System- wide Retention Rates (B+C+D+E/A)
		A	B	C	D	E	F	G
DS	B	132	87	0	0	7	65.9%	71.2%
	AO	195	102	0	0	21	52.3%	63.1%
	TOT	327	189	0	0	28	57.8%	66.4%
FRESH	B	99	72	0	0	3	72.7%	75.8%
	AO	595	416	0	0	65	69.9%	80.8%
	TOT	694	488	0	0	68	70.3%	80.1%
TOTAL CLASS	B	231	159	0	0	10	68.8%	73.2%
	AO	790	518	0	0	86	65.6%	76.5%
	TOT	1021	677	0	0	96	66.3%	75.7%

		Number Enrolled Fall 1993	Number Enrolled At VSU Fall 1994	Number Graduated From VSU Fall 1994	Number Graduated From Other System Units Fall 1994	Number Transferred To Other System Units Fall 1994	VSU Retention Rates (B+C/A)	System- wide Retention Rates (B+C+D+E/A)
		A	B	C	D	E	F	G
DS	B	179	119	0	0	6	66.5%	69.8%
	AO	255	148	0	0	20	58.0%	65.9%
	TOT	434	267	0	0	26	61.5%	67.5%
FRESH	B	135	94	0	0	5	69.6%	73.3%
	AO	688	474	0	0	87	68.9%	81.5%
	TOT	823	568	0	0	92	69.0%	80.2%
TOTAL CLASS	B	314	213	0	0	11	67.8%	71.3%
	AO	943	622	0	0	107	66.0%	77.3%
	TOT	1257	835	0	0	118	66.4%	75.8%

		Number Enrolled Fall 1994	Number Enrolled At VSU Fall 1995	Number Graduated From VSU Fall 1995	Number Graduated From Other System Units Fall 1995	Number Transferred To Other System Units Fall 1995	VSU Retention Rates (B+C/A)	System- wide Retention Rates (B+C+D+E/A)
		A	B	C	D	E	F	G
DS	B	0	N/A	N/A	N/A	N/A	N/A	N/A
	AO	0	N/A	N/A	N/A	N/A	N/A	N/A
	TOT	0	N/A	N/A	N/A	N/A	N/A	N/A
FRESH	B	343	232	0	0	19	67.6%	73.2%
	AO	1033	662	0	0	119	64.1%	75.6%
	TOT	1376	894	0	0	138	65.0%	75.0%
TOTAL CLASS	B	343	232	0	0	19	67.6%	73.2%
	AO	1033	662	0	0	119	64.1%	75.6%
	TOT	1376	894	0	0	138	65.0%	75.0%

The legend applies to pages 22 & 23.

B refers to Black Students.
AO refers to All Other Students.
DS refers to Developmental Studies Students.
FRESH refers to Freshmen Students.
VSU retention rates include students who enter and continue their education at VSU.
Systemwide retention rates include students who initially entered VSU but later transferred to other University System Schools.

SOURCE: University System of Georgia Retention and Graduation Reports. Data for 1996 was not available.

MULTIPLE YEAR RETENTION RATES

MULTIPLE YEAR RETENTION RATES, FULL-TIME FIRST-TIME ENTERING STUDENTS BY RACE FALL QUARTERS 1984 TO 1995 (10 YEARS, SAME STUDENTS); COMPARISON OF SYSTEM AND VSU RATES

Number Enrolled Fall 1984	One Year Later					Two Years Later					Three Years Later					System-wide Retention Rates (B-C-D-E/A) F G
	Number Enrolled At VSU		Number Graduated From Other System Units		Number Transferred To Other System Units	Number Enrolled At VSU		Number Graduated From Other System Units		Number Transferred To Other System Units	Number Enrolled At VSU		Number Graduated From Other System Units		Number Transferred To Other System Units	
	B	C	D	E		B	C	D	E		B	C	D	E		
DS B 73	39	0	0	5	53.4%	28	0	0	4	38.4%	23	1	0	5	32.9%	39.7%
AO 131	69	1	0	12	53.4%	44	1	0	6	34.4%	34	1	0	11	26.7%	35.1%
TOT 204	108	1	0	17	53.4%	72	1	0	10	35.8%	57	2	0	16	28.9%	36.8%
FRESH B 79	57	0	0	3	72.2%	52	0	0	5	65.8%	41	1	0	6	53.2%	60.8%
AO 615	389	0	0	58	63.3%	289	0	0	77	47.0%	265	2	0	77	43.4%	55.9%
TOT 694	446	0	0	61	64.3%	341	0	0	82	49.1%	306	3	0	83	44.5%	56.5%
TOTAL B 152	96	0	0	8	63.2%	80	0	0	9	52.6%	64	2	0	11	43.4%	50.7%
AO 746	458	1	0	70	61.5%	333	1	0	83	44.8%	299	3	0	88	40.5%	52.3%
TOT 898	554	1	0	78	61.8%	413	1	0	92	46.1%	363	5	0	99	41.0%	52.0%

Number Enrolled Fall 1984	Four Years Later					Five Years Later					Six Years Later					System-wide Retention Rates (B-C-D-E/A) F G
	Number Enrolled At VSU		Number Graduated From Other System Units		Number Transferred To Other System Units	Number Enrolled At VSU		Number Graduated From Other System Units		Number Transferred To Other System Units	Number Enrolled At VSU		Number Graduated From Other System Units		Number Transferred To Other System Units	
	B	C	D	E		B	C	D	E		B	C	D	E		
DS B 73	20	2	1	6	30.1%	6	15	1	4	28.8%	3	17	1	2	27.4%	31.5%
AO 131	24	5	1	9	22.1%	9	21	2	7	22.8%	5	24	4	2	22.1%	26.7%
TOT 204	44	7	2	15	25.0%	15	36	3	11	25.0%	8	41	5	4	24.0%	28.4%
FRESH B 79	24	15	1	5	49.4%	2	36	2	4	48.1%	3	39	3	1	53.9%	58.2%
AO 615	121	121	21	61	39.3%	43	199	43	36	39.3%	22	225	54	27	40.2%	53.3%
TOT 694	145	136	22	66	40.5%	45	235	45	40	40.3%	25	264	57	28	41.6%	53.9%
TOTAL B 152	44	17	2	11	40.1%	8	51	3	8	38.8%	6	56	4	3	40.8%	45.4%
AO 746	145	126	22	70	36.3%	52	220	45	43	36.5%	27	249	58	29	37.0%	48.7%
TOT 898	189	143	24	81	37.0%	60	271	48	51	36.9%	33	305	62	32	37.6%	48.1%

Number Enrolled Fall 1984	Seven Years Later					Eight Years Later					Nine Years Later					System-wide Retention Rates (B-C-D-E/A) F G
	Number Enrolled At VSU		Number Graduated From Other System Units		Number Transferred To Other System Units	Number Enrolled At VSU		Number Graduated From Other System Units		Number Transferred To Other System Units	Number Enrolled At VSU		Number Graduated From Other System Units		Number Transferred To Other System Units	
	B	C	D	E		B	C	D	E		B	C	D	E		
DS B 73	1	18	1	6	25.0%	2	20	3	2	30.1%	3	20	3	1	31.5%	37.0%
AO 131	4	26	4	6	22.9%	2	27	6	1	22.1%	1	29	5	2	22.9%	28.2%
TOT 204	5	44	5	9	24.0%	4	47	9	3	25.0%	4	49	8	3	26.0%	31.4%
FRESH B 79	2	39	4	1	51.9%	0	41	5	4	51.9%	0	41	5	3	51.9%	62.0%
AO 615	12	230	56	17	38.3%	4	239	66	17	39.5%	12	239	70	15	40.8%	54.6%
TOT 694	14	269	60	18	40.8%	4	280	71	21	40.9%	12	280	75	18	42.1%	55.5%
TOTAL B 152	3	57	5	7	39.5%	2	61	8	6	41.4%	2	61	8	4	42.1%	50.0%
AO 746	16	256	60	20	36.5%	6	266	72	18	36.5%	3	268	75	17	37.7%	50.0%
TOT 898	19	313	65	27	37.0%	8	327	80	24	37.3%	16	329	83	21	38.4%	50.0%

Number Enrolled Fall 1984	Ten Years Later					System-wide Retention Rates (B-C-D-E/A) F G
	Number Enrolled At VSU		Number Graduated From Other System Units		Number Transferred To Other System Units	
	B	C	D	E		
DS B 73	2	20	3	2	34.2%	34.2%
AO 131	1	29	6	2	22.9%	29.0%
TOT 204	3	49	9	2	25.5%	30.9%
FRESH B 79	0	40	7	3	50.6%	63.3%
AO 615	7	243	72	9	40.7%	53.8%
TOT 694	7	283	79	12	41.8%	54.9%
TOTAL B 152	2	60	10	3	40.8%	49.3%
AO 746	8	272	76	11	37.6%	48.5%
TOT 898	10	332	88	14	38.1%	49.4%

SOURCE: University System of Georgia Retention and Graduation Reports. Data for 1996 was not available.

STUDENT FINANCIAL AID - FISCAL YEARS 1994 THROUGH 1997

Source of Financial Aid	FISCAL YEARS			
	FY 1994	FY 1995	FY 1996	FY 1997
LOANS				
Federal Direct Loan	*	*	\$22,966,538	\$26,126,124
Perkins Loan	\$309,190	\$0	\$0	\$0
State Guaranteed	\$18,320,627	\$16,995,438	\$0	\$65,244
Regents Scholarship	\$7,700	\$7,450	\$7,300	\$7,750
Private Loan	\$43,738	\$30,502	\$47,445	\$43,859
Total	\$18,681,255	\$17,033,390	\$23,021,283	\$26,242,977
SCHOLARSHIPS				
Institutional	\$664,485	\$877,065	\$846,752	\$814,989
Private	\$504,909	\$478,120	\$321,154	\$386,010
Total	\$1,169,394	\$1,355,185	\$1,167,906	\$1,200,999
GRANTS				
HOPE Grant	\$517,240	\$2,228,143	\$3,779,283	\$5,129,213
Pell Grant	\$4,320,555	\$4,444,938	\$4,584,242	\$4,993,027
S.E.O.G.	\$126,127	\$343,699	\$403,900	\$464,685
Vocational Rehabilitation	\$49,219	\$68,095	\$160,958	\$117,213
Georgia Incentive Scholarships	\$200,017	\$239,054	\$202,972	\$92,956
Total	\$5,213,158	\$7,323,929	\$9,131,355	\$10,797,094
College Work Study	\$379,239	\$435,052	\$328,138	\$357,892
Graduate Assistants	\$203,290	\$214,606	\$293,118	\$281,000
Student Assistants	\$1,068,190	\$1,153,710	\$1,291,029	\$1,348,089
Total	\$1,650,719	\$1,803,368	\$1,912,285	\$1,986,981
VA EDUCATIONAL BENEFITS				
Total	\$2,184,500	\$2,154,490	\$2,500,000	\$2,175,500
GRAND TOTAL	\$28,899,026	\$29,670,362	\$37,732,829	\$42,403,551

* The program did not exist at this time.

Note: Information does not match previous years' fact books. New data has been submitted for VA and formulas for grand totals and FY1994 grants have been corrected.

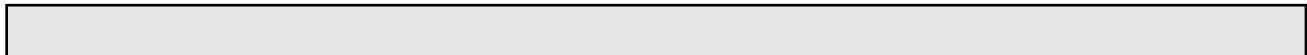
Source: VSU Office of Financial Aid

**CONTINUING EDUCATION PROGRAMS
FY 1995 THROUGH FY 1997**

Admissions Application Statistics -Fall Quarters 1992-1996

STATUS OF APPLICANT	FALL-92	FALL-93	FALL-94	FALL-95	FALL-96
Total New Undergraduate Applicants	4505	4960	5618	6241	6470
Total New Freshmen Applicants *	3374	3674	4178	4759	4785
Total New Developmental Studies Applicants *	1600	1786	2031	2231	*
Total New Transfer Applicants	1100	1257	1402	1358	1320
Percentage of Applicants Accepted	74%	77%	72%	74%	74%
Percentage of Accepted Applicants Enrolled	54%	55%	56%	53%	52.7%
Total Freshmen Applicants Rejected	172	219	248	284	283
Total Transfer Applicants Rejected	6	5	19	42	42
Total Cancelled Applications	727	652	817	1007	1006

Note: Total New Developmental Studies Applicants is also included in Total New Freshmen Applicants.
* Not Available from current data sources.



**Continuing Education Programs
Fiscal Years 1995-1997
Categories I and II**

Fiscal Year	Number of Programs	Number of Participants	Number of Hours	Number of CEU's
1994-95	274	3,056	26,394	1,279
1995-96	291	4,125	21,094	771
1996-97	300	4,513	40,834	4,083

Note: The Continuing Education Unit (CEU) is defined as ten contact hours of participation in a qualified continuing education program. The CEU is recognized as the national standard for measuring an individual's participation in and an institution's production of non-credit programs. Category I program activities are designed to enhance occupational skills and individual permanent records and transcripts are maintained. Category II program activities are designed primarily for personal enrichment and are social, cultural or recreational in nature. No permanent individual records or transcripts are maintained.

**OFF-CAMPUS PROGRAMS
FALL 1996**

**DEGREES CONFERRED BY QUARTER
EXTERNAL PROGRAMS FY 96 AND FY 97**

**OFF-CAMPUS PROGRAMS
FALL 1996**

Fall 1996 Degree	Location	OFF CAMPUS COURSES				Fall 1996 Degree	Location	DISTANCE LEARNING (GSAMS)				
		Number of Students	Number of Courses	Number of Credit Hours	Number of Faculty			Number of Students	Number of Courses	Number of Credit Hours**	Number of Faculty	
Technical & Industrial Ed. (Bachelor)	Albany	33	5	310	5	Nursing (Bachelor)	Waycross	4	2	44	2	
	Kings Bay	31	3	270	3		Tifton	2	2	22	2	
	Moody	24	3	195	3		Douglas	4	2	44	2	
Vocational Education (Master)	Albany	7	1	35	1	Business (Bachelor)	Waycross	8	2	90	2	
	Kings Bay	25	3	170	2		Douglas	4	2	60	2	
	Tifton	13	1	65	1		Bainbridge	6	2	70	2	
General Studies (Bachelor)	Kings Bay	18	3	165	3	Middle Grades Ed. (Bachelor)	Folkston	8	3	83	3	
Early Childhood Education (Bachelor)	Kings Bay	13	1	26	1	Middle Grades Ed. (Bachelor)	Waycross***	10	2	75	2	
	Tifton	16	1	80	1		Early Childhood Education* (Bachelor)	Kings Bay	12	2	125	2
	Waycross	36	3	245	3			Waycross	10	2	115	2
Early Childhood Education (Master)	Bainbridge	8	1	40	1	Tifton		17	1	85	1	
	Fitzgerald	30	1	150	1							
	Waycross	12	1	60	1							
Ed. Leadership (Master)	Waycross	13	1	65	1							
Middle Grades Ed. (Bachelor)	Folkston/ Waycross	12	1	60	1							
Middle Grades Ed. (Master)	Bainbridge	7	1	35	1							
Middle Grades Ed. (Ed. Spec.)	Waycross	4	1	20	1							
Public Admin. (Master)	Kings Bay	17	5	160	3							
	Moody	72	11	635	6							

*These are Off-Campus Cycle Programs, but are part of the required courses offered via distance learning -- enrollment in distance learning as reflected above.

** Credit hours are calculated by multiplying enrollment in each cycle course by credit hours for each course, then totaling. May include non-cycle students.

*** One course for this Distance Learning Cycle Program (at Waycross) was offered through the Off-Campus Program.

Note: Credit hours calculated by multiplying enrollment in each cycle course by credit hours for each course (may include "non-cycle" students) and totaling.

* The Business and Nursing Cycles are Distance Learning Programs.

DEGREES CONFERRED BY QUARTER IN EXTERNAL PROGRAMS FY 96 AND FY 97

Degrees	T and I Education (Bachelor)			General Studies (Bachelor)	Nursing (Bachelor)			Early Childhood Education (Bachelor)		Early Childhood Education (Master)		Public Administration (Master)		Business (Bachelor)			Vocational Education (Master)	
	Albany	Kings Bay	Moody		Waycross	Tifton	Douglas	Kings Bay	Waycross	Fitzgerald	Waycross	Kings Bay	Moody	Waycross	Douglas	Bainbridge	Albany	Kings Bay
Total - FY 1996	14	10	17	3	4	1	1	0	2	0	0	11	44	1	4	2	0	0
Summer 1995	5	6	3	2	4	1	1	0	0	0	0	0	12	0	0	0	0	0
Fall 1995	2	1	5	0	0	0	0	0	2	0	0	4	8	0	0	0	0	0
Winter 1996	3	3	5	1	0	0	0	0	0	0	0	4	9	0	0	0	0	0
Spring 1996	4	0	4	0	0	0	0	0	0	0	0	3	15	1	4	2	0	0
Total - FY 1997	15	11	15	14	3	6	4	13	13	2	3	7	41	0	0	0	2	2
Summer 1996	2	5	3	3	3	6	4	0	0	0	0	2	12				0	1
Fall 1996	4	0	3	5	0	0	0	0	2	1	0	1	7				1	0
Winter 1997	4	2	3	4	0	0	0	10	7	0	0	2	6				1	0
Spring 1997	5	4	6	2	0	0	0	3	4	1	3	2	16				0	1

Source: Valdosta State University Public Services Office, 1996.