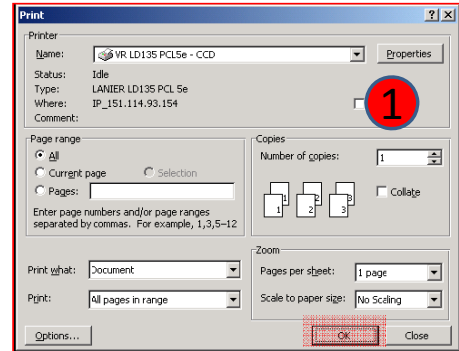


How To Print Using The Card Swipe Device

At Your Computer...

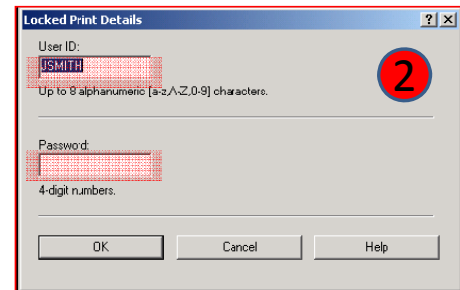
Step 1.

Select Print, set the desired print settings, and then select **OK**.



Step 2.

Fill in the pop-up information box with a **user id** and **password** that will be used to identify your print job at the Printer. **You can choose your own user id and password.**



At Your Printer...

Step 3. Swipe your card.

Step 4. On the printer's touch screen, select your **user id**.

Step 5. Enter your **password**.

Step 6. Select your job and select **Print**.

Step 7. Press **Done** on the Card Swipe device to log out.

