



THE 1965 PINE CONE

Valdosta State College

Valdosta, Georgia

SP COL
LH
1
.V25
MS
1965

Table of Contents

<i>Features</i>	<i>Page</i> 28
<i>Activities</i>	<i>Page</i> 46
<i>Greeks</i>	<i>Page</i> 66
<i>Organizations</i>	<i>Page</i> 82
<i>Athletics</i>	<i>Page</i> 110
<i>Administration</i>	<i>Page</i> 126
<i>Classes</i>	<i>Page</i> 142

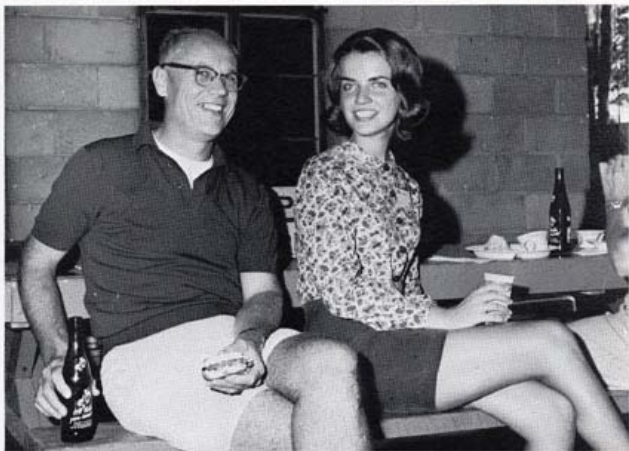


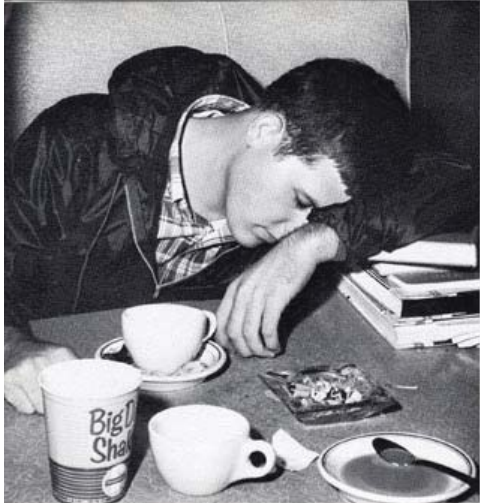


A School of Many Parts

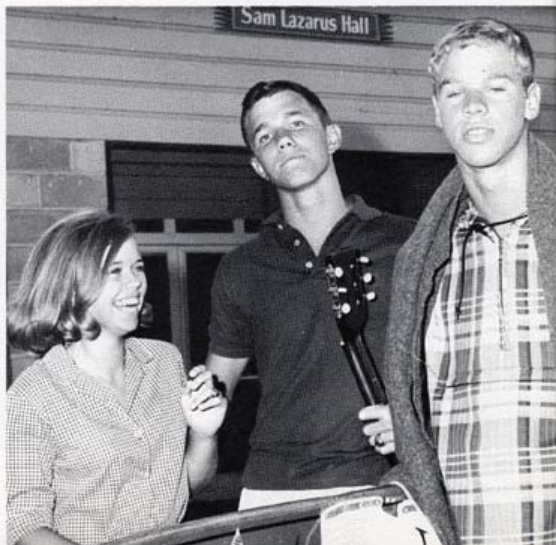


College is many different things. It is working, playing, laughing, and crying. There is an exchange of ideas between friends, acquaintances, and among students who come from far away to experience this unique atmosphere. Though these friendships may blossom or die, their influence remains.



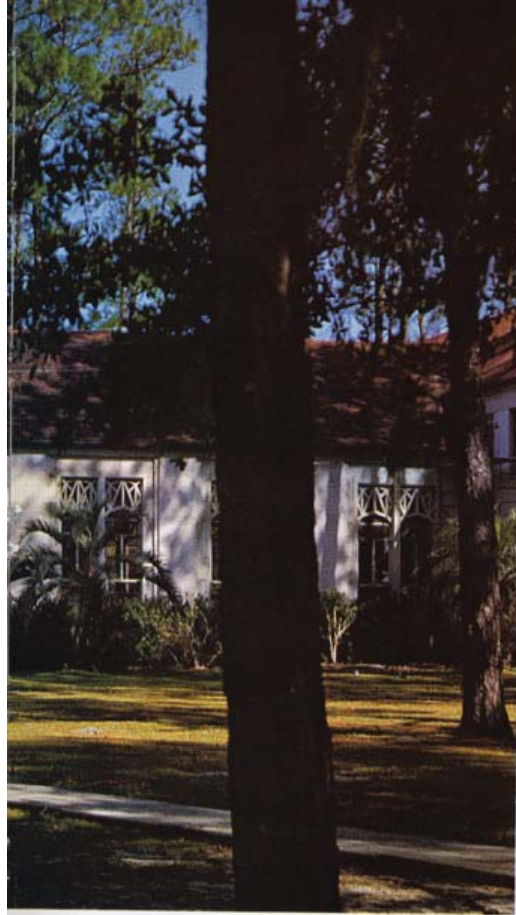


Sometimes the academic is forgotten momentarily.
A Fraternity party, a bid, new friends, an escape.
A day spent at the lakes with a pretty girl, a guitar,
a boat—and if only time would stand still.





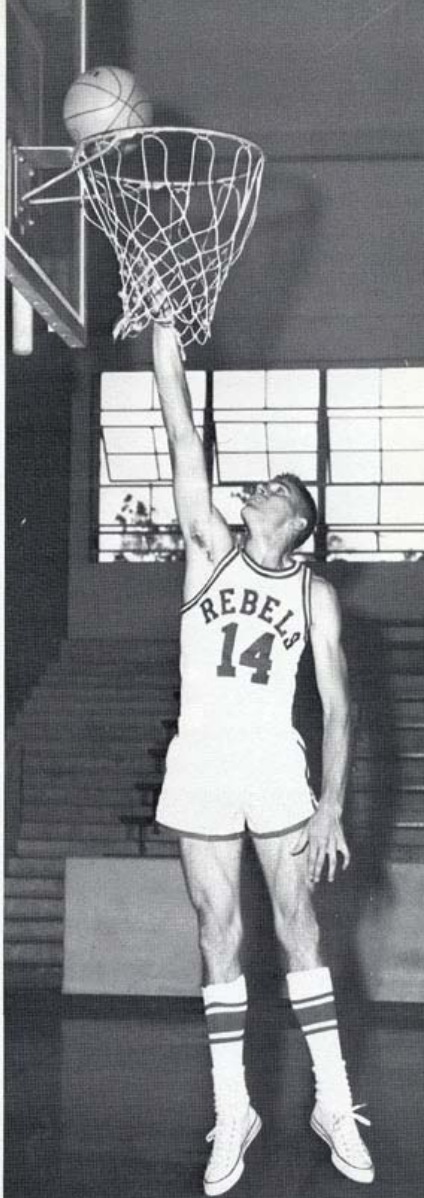
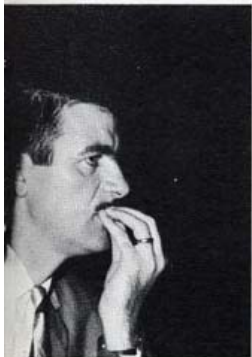




College is more than the classroom, laboratory, and the library. It is a strange place abounding with opportunities to which we join ourselves for a meager four years, then it is no more. We are suspended from, but a lesser part of, the normal realm of society. We have no known place. We know not what we want. We are confused, excited, depressed, struggling, expectant, searching,—



If only time would remain still for a few fleeting moments, but life must move on. A moment of success, one of sorrow, of happiness, these are in the past, present, and future. Life will not wait. Its fleeting moments are so urgent.





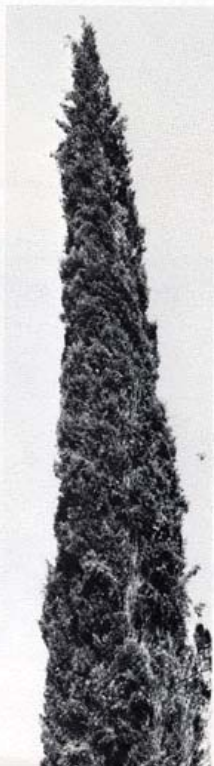
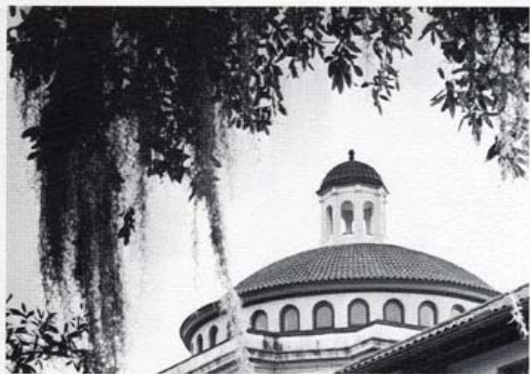
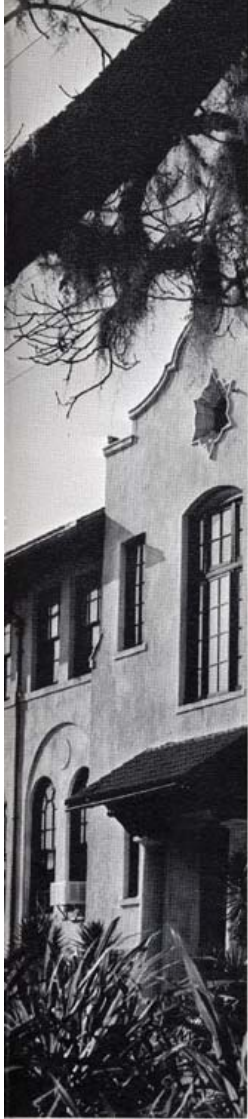
A new room, new friends, a new way of life. A secret whispered in the student center—a stolen moment of solitude.





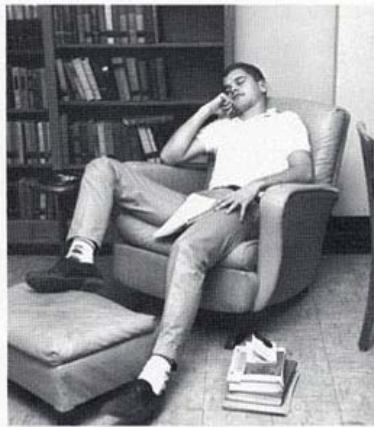
This is a place where we will spend so brief a part of our life. Perhaps you have come here with no definite quest. You are drifting through life and at the moment escaping some of its harsh realities. You may drift on and evade the paramount questions of life. But will you ever know who you are or what you are doing in this place? Remember self-knowledge is the fulfillment of life.







Beauty is an illusion
a state of mind—mo-
ments of shock, happi-
ness, laughter, tears of
joy





The campus welcomed political figures of National renown during the Fall election campaigns. The most prominent was the Nation's First Lady, Mrs. Lyndon Baines Johnson, who stopped in Valdosta during her whistle-stop tour of the South. Others speaking in Valdosta were the Honorable Strom Thurmond of South Carolina, Georgia's own Honorable Senator, Herman Talmadge; and the Governor of Georgia, Carl Sanders.

Ronnie Davis and Warren Wolfe led the rallies, campaigns, and arguments on campus for the candidates.

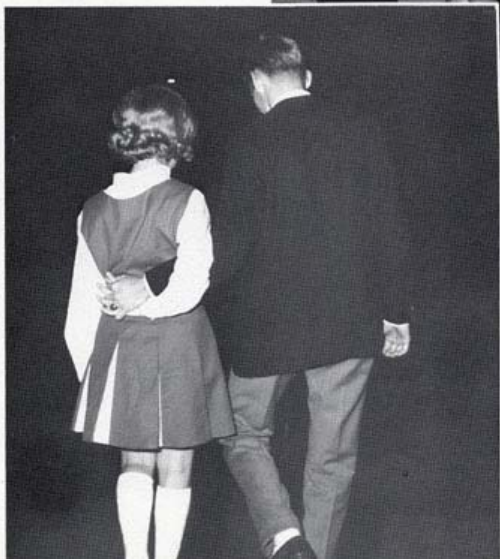


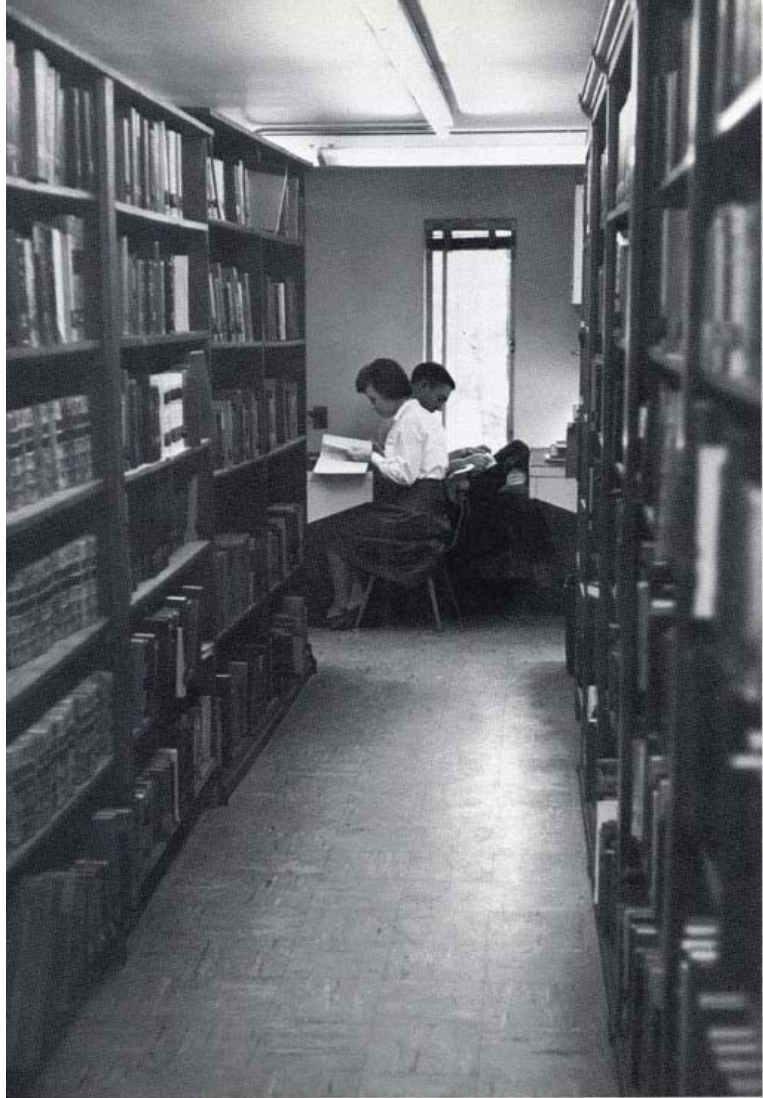




Love—a whispered nothing;
a shoulder for dreaming—or
crying; a laugh in the sunlight.
Sharing.

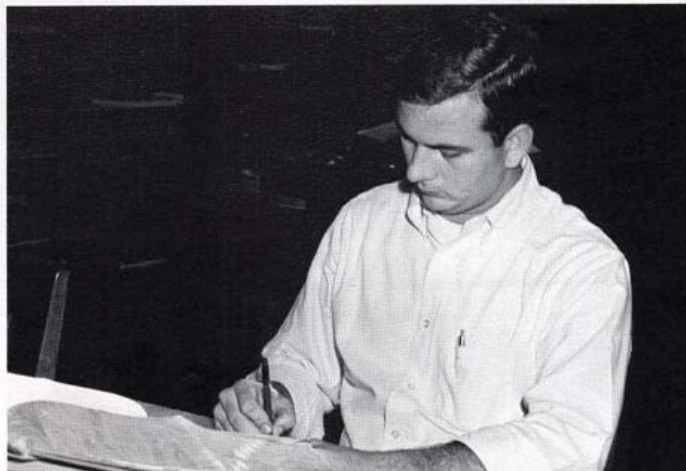


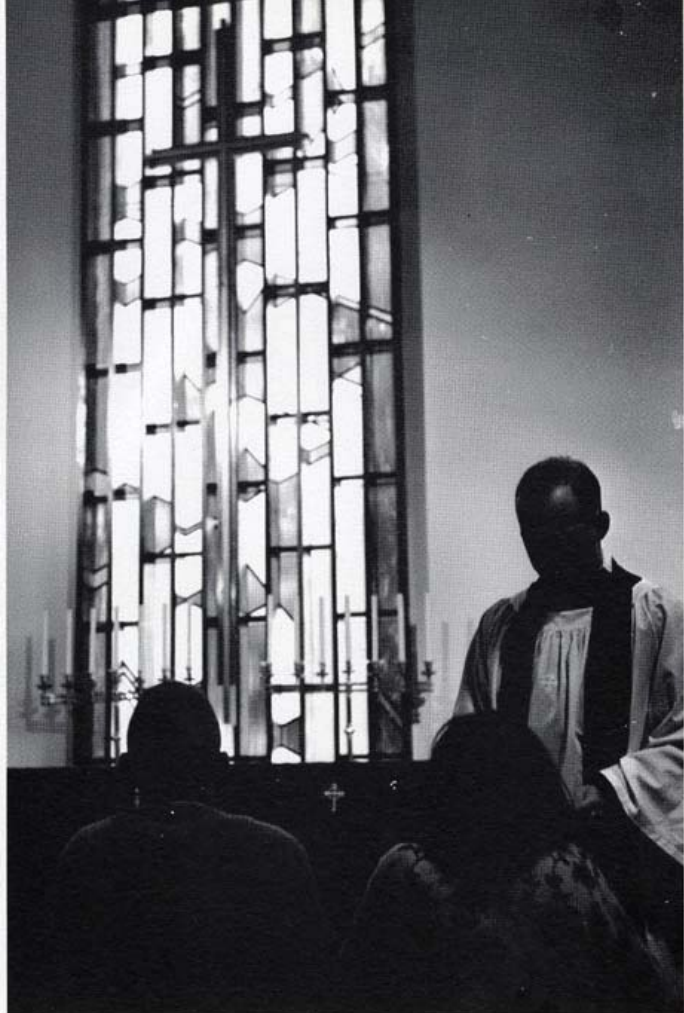




Study is the way to knowledge.—Row upon row of books representing only a fraction of main knowledge—long hours of hard work, boredom, tears, and finally success.

When man begins to realize his ignorance, he begins to truly learn.





We search . . . look, long . . . hope;

Is it vain?

A cross—hope,

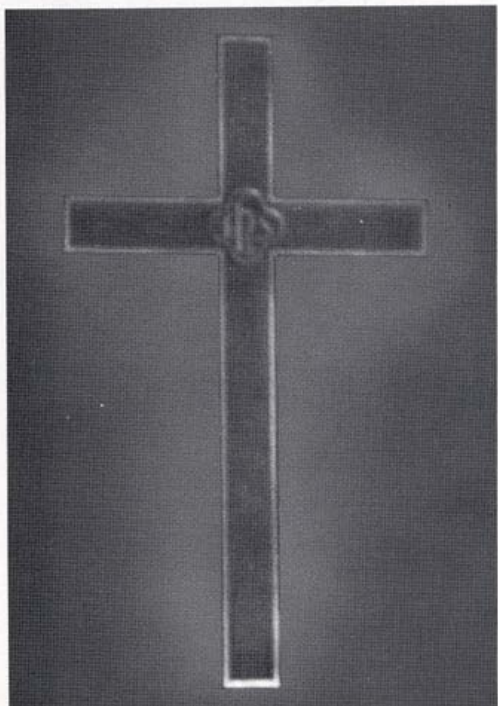
A flag—allegiance,

A painting—strength,

A chapel—reverence.

We seek—for what . . .

a way of life.



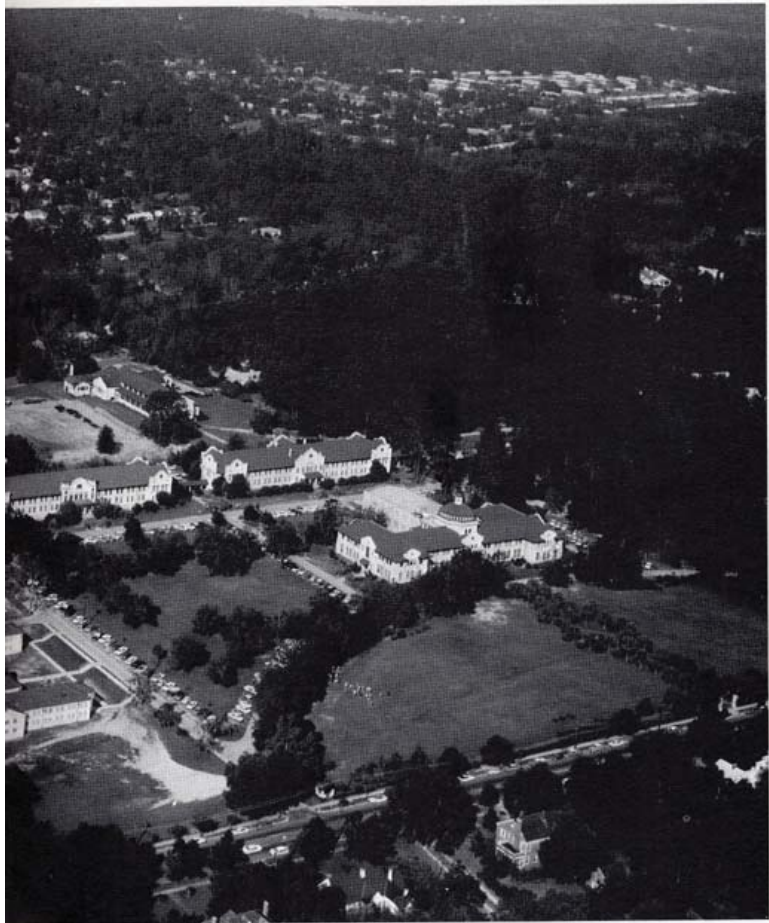
This book is the representation of one brief year of our college life, whether it be the first of four years or perhaps the last. By no means could we portray all that college means to each student. There are many parts that make VSC a whole.

We have left the normal pace of society and linked ourselves to this institution to begin preparing for our roles in life. We are confused, excited, depressed, and expectant. We struggle to find ourselves in the pace of the academic and the pull of the social. The professors are forboding, demanding, enlightening, and helpful.

Parties and dances, basketball games and jam sessions, fraternities and sororities, research papers and finals, and then the year is over.

Perhaps we will remember old friends, old times, and meet again at a class reunion. Most important we will realize that from these many struggles, joys, and disappointments shared while at VSC, we have set the stage for our lives and only time will reveal its success.





From Many Parts Emerge the Whole

Features

Many events add something special to the campus throughout the year. The selections of Who's Who and Marga and Mac are the personalities who typify the attainment of the goal of the college in developing the individual. Perhaps among the most exciting events is the selection of campus beauty queens. One young coed, Ellen Taylor, of Valdosta, not only won local beauty contests, but went on to become the first runner-up in the Miss Georgia Pageant. Ellen is pictured on these two pages. These activities not only provide entertainment, but are outlets for student creativity and leadership.





Who's Who
Among Students
in American Universities
and Colleges 1964-1965



Each senior nominated for *Who's Who Among Students in American Universities and Colleges* receives national recognition based on scholarship, leadership, co-operation in education and extracurricular activities, general citizenship and promise for future usefulness. The students were selected by a faculty-student committee at Valdosta State College.



SONNY AKINS (Enigma, Ga.) Pres. Alpha Chi Honor Society; Pres. Creative Writing Club; Editor "The Key", Baptist Student Union; Summer missionary to Venezuela.

DAVE BARROW (Coolidge, Ga.)
Pi Kappa Phi Fraternity, Pres., Treas.



JIM BUITE (Valdosta, Ga.) Vice-Pres. Alpha Chi Honor Society; Sigma Alpha Chi; State, Local Baptist Student Union Pres.; Summer missionary to Thailand.



LAURICE COAN (Valdosta, Ga.)
Pres. Student Govt. Assoc.; Pres.
Freshman Class; Pres., Vice-Pres.
Circle K; Vice-Pres. Baptist Student
Union; MAC Junior College.

DONNIE CONLEY (Pelham, Ga.)
Sigma Phi Epsilon Fraternity; Stu-
dent Govt. Assoc.; Phi Beta Lambda;
Economic Seminar.



FLORENCE DARNELL (Valdosta,
Ga.) Editor "V-Book" and 1964 Pine
Cone; Wesley Foundation; Education
Club; Art Club.



FAYE DAVIS (Valdosta, Ga.) Al-
pha Xi Delta Sorority; Pres. Sigma
Alpha Chi; Education Club; Treas.
Alpha Chi Honor Society; Shades of
Gray; "Campus Canopy" and Pine
Cone Staff.

LINDA KAY DAVIS (Newton,
Ga.) Pres. Young Women's Christian
Assoc.; Education Club; Baptist Stu-
dent Union; Student Religious
Council.



DIANE FIELDS (Griffin, Ga.)
Vice-Pres., Sec'y. Math-Science
Club; Sec'y. Alpha Chi Honor Soci-
ety; Sigma Alpha Chi Honor Soci-
ety; Sec'y. Young Women's Chris-
tian Assoc.; Sec'y-Treas. Baptist Stu-
dent Union.



GEORGE FOLSOM (Lakeland, Ga.)
Alpha Chi Honor Society; Sigma Alpha Chi Honor Society; 1964 Physics Achievement Award.



SYLVIA GRIFFIN (Bainbridge, Ga.)
Sigma Alpha Chi Honor Society; Alpha Chi Honor Society; *Vice-Pres.* Women's Residence House Council; Baptist Student Union Executive Council.



CAROL JOLLEY (Valdosta, Ga.)
Alpha Delta Pi Sorority, Membership Chairman, Guard, Reporter-Historian; Editor 1965 *Pine Cone*; *Sec'y.* Wesley Foundation; *Sec'y-Treas.* Sociology Club; Women's Athletic Assoc.; *Treas.* Sophomore Class.



DELORES LASHLEY (Valdosta, Ga.)
Alpha Xi Delta Sorority; *Pres.* Women's Athletic Assoc.; *Vice-Pres., Sec'y-Treas.* Fins and Flippers; "Campus Canopy" and *Pine Cone* staff; *Vice-Pres.* Sigma Alpha Chi Honor Society; Westminster Fellowship.



IRENE McMILLIAN (Valdosta, Ga.)
Alpha Xi Delta Sorority; Alpha Chi and Sigma Alpha Chi Honor Societies; Shades of Gray; Education Club; "Campus Canopy" staff.



GRADY MILLS (Waynesboro, Ga.)
Pres. Alpha Psi Omega; *Pres.* Men's Christian Alliance; Sock and Buckskin; Wesley Foundation; 1964 Best Stage Technician Award.



TOM MILNER (Quitman, Ga.)
Alpha Chi Honor Society; Sigma Alpha Chi Honor Society; Varsity Tennis.



JUANITA NORSWORTHY (Valdosta, Ga.)
Pine Cone staff; had articles in "American Fern Journal", has fern specimens in Smithsonian Institute.

JIMMY O'NEAL (Donalsonville, Ga.)
Sigma Phi Epsilon Fraternity, Vice-Pres., Chaplain; Pres.
Senior Class; Alpha Delta Pi "King of Diamonds."



SANDRA SESSIONS (Valdosta, Ga.)
Kappa Delta Sorority, Pres., Sec'y., Chaplain; Sec'y. Alpha
Chi Honor Society; Sigma Alpha Chi Honor Society;
Glee Club; Sociology Club; Student Govt. Assoc.

GARY SIRMONS (Lakeland, Ga.)
Pres. Sophomore Class; Pres. Junior Class; Circle K.



JANE STANDLAND (Valdosta, Ga.)
Kappa Delta Sorority, Vice-Pres.; Pres. Education Club;
TKE Calendar Girl; Serenaders; Glee Club; *Pine Cone*
staff.

JANET THOMPSON (Albany, Ga.)
Vice-Pres. Sociology Club; Vice-Pres. Young Women's
Christian Assoc.; Baptist Student Union; Women's Ath-
letic Assoc.; *Pine Cone* staff; Women's Residence House
Council; Junior Class Sweetheart; "Miss Pine Cone
Court"; Sigma Phi Epsilon sponsor.



BRUCE VARNADO (Valdosta, Ga.)
Sigma Phi Epsilon Fraternity, Pres., Treas.; Student Gov-
ernment Assoc.; *Pine Cone* Business Manager.

CHARLES WILKES (Valdosta, Ga.)
Pres. Math-Science Club; Men's Christian Alliance; Bap-
tist Student Union; Circle K.



LORANE ATWELL WILLIAMS (Lakeland, Ga.)
American Farmer Degree, National Future Farmers of
America.



Marga and Mac

Best All Round

Senior College

Sandra Sessions and Jim Buie, both of Valdosta, were chosen Marga and Mac for the Senior college. Sandra has been president of Kappa Delta Sorority, secretary of Sigma Alpha Chi honor society, representative to the Student Government Association, and was elected to Who's Who. Jim has been state and local president of the Baptist Student Union, a member of Alpha Chi and Sigma Alpha Chi honor societies, and was elected to Who's Who.



Marga and Mac

Best All Round

Junior College

Susan Leuck of Tifton and Tex Bentley of San Angelo, Texas were chosen Marga and Mac for the Junior college. Susan has been a member of Sigma Alpha Chi honor society, a Sigma Phi Epsilon sponsor, and a member of the 1965 Miss Pine Cone Court. Tex has been chaplain of the Pi Kappa Phi Fraternity, treasurer of the Student Government Association, and a member of the Campus Canopy staff.



Miss Pine Cone

Five VSC coeds, chosen by the Pine Cone staff, were presented to the student body at the annual "Holly Hop" in December as the five finalists of the "1965 Miss Pine Cone" contest.

Mr. James Franciscus, star of "Mr. Novak", selected from photos Miss Laura Hobbs of Blackshear as Miss Pine Cone of 1965. Those on her court are Faye Davis, Andrea Hobbs, Susan Leuck, and Suzanne Schultz.

Laura, a sophomore, is a TKE Calendar Girl, a member of WAA and the Alpha Delta Pi Sorority.





Faye Davis



Andrea Hobbs



Susan Leuck



Suzanne Schultz

Miss TKE Calendar Girl



The Tau Kappa Epsilon Fraternity sponsors the TKE Calendar Girl Contest as one of their annual projects. Twelve girls are chosen, one to represent each month. They appear in sports and evening wear and are judged on beauty and poise.

Miss Andy Shenton of Valdosta was crowned TKE Calendar Girl for 1965. Andy, a sophomore, is a cheerleader and a member of Alpha Delta Pi Sorority.



The months on the calendar are represented by Lyn Edwards, Barbara Talley, Linda Deen, Glenda Gunter, Patsy Garvin, Laura Hobbs, Andy Shenton, Laura Resch, Andrea Hobbs, Nancy Purtle, Roberta Bryce, Latrell Pitts.

Greek God and Goddess

A highlight of Greek Week activities is the nomination of Greek God and Goddess. From a group of eighteen contestants, Ruth Ann Roddey and Jimbo Smith were chosen for this year's honors. Ruth Ann, a sophomore from Valdosta, is a member of Kappa Delta Sorority. Jimbo, of Macon, is a member of Tau Kappa Epsilon Fraternity.



Ruth Ann Roddey and Jimbo Smith reign as Greek God and Goddess for 1965.



Ruth Ann is also Tau Kappa Epsilon Sweetheart.



Jimbo serves as president of the Wesley Foundation and the Circle K.



Miss VSC

The annual Miss VSC contest, sponsored by the Pi Kappa Phi Fraternity, got off to a fine start with the roll of drums and an eruption of the gigantic volcano; the theme—South Pacific. Amid palm trees and thatched huts, ten beautiful ladies vied for the title of Miss VSC 1965.

Miss Cindy Sessions of Waynesboro was crowned by Brenda Smith, Miss VSC of 1964. Cindy, a sophomore, is a Speech major and a member of Alpha Xi Delta Sorority.



Latrell Pitts, 3rd runner-up; Angie Jarrett, 1st runner-up; Cindy Sessions, Miss VSC; Carole Williamson, 2nd runner-up; and Pam Smith, 4th runner-up.

Mr. and Miss VSC Spirit



"Rebels All the Cotton Pickin' Time"

Gail Basmore, from Quitman, was a cheerleader until an injured knee caused her to give up her position and become a part of the cheering student body. Gail, a junior, has been Homecoming Queen, TKE sponsor, and a member of ADP sorority.

Mike Fletcher, from Valdosta, adds a little more than most students at a basketball game. He is a sophomore, and a member of the Sigma Phi Epsilon fraternity.



Best Dressed at VSC



LAURA HOBBS
Blackshear, Georgia

The Ten Best Dressed Girls at V.S.C. were judged on appearance, grooming, fashion, and individuality. Nominated by the entire student body and selected by a committee including members of the CAMPUS CANOPY and PINE CONE staffs, the winner will be submitted to the national contest sponsored by GLAMOUR.

The winner of our campus contest was Laura Hobbs.



PEACHY DANIEL
Griffin, Georgia



LUCILLE DAWSON
Valdosta, Georgia



SANDRA FLETCHER
Valdosta, Georgia



ELAINE FREEMAN
Moultrie, Georgia



PEGGY HERRING
Bainbridge, Georgia



ANDREA HOBBS
Cordele, Georgia



MARGARET ANNE PARSONS
McRae, Georgia



LATRELLE PITTS
Thomasville, Georgia



SANDRA SESSIONS
Valdosta, Georgia

Homecoming Queen and Court

"Hollywood at VSC"—theme for the Homecoming festivities in February. The highlight came at the formal dance on Saturday night, when the Homecoming Court was presented. At this time the 1964 Homecoming Queen crowned Angie Jarrett.



Angie Jarrett, Homecoming Queen, is crowned by Gail Bazemore, Queen of 1964.

Angie is from Blakley, Georgia. While at VSC she has been a TKE sponsor, a member of the WAA and the Assistant Treasurer of the Kappa Delta Sorority.



Gail Bazemore



Jo Bryan



Ruth Ann Roddey



Ellen Taylor

Activities

Activities . . . registration, receptions, plays, concerts, tradition, dances . . . outside interests. This gives a time to develop hobbies, reach social success, enjoy playing, planning, laughing, crying.







VSC Registration





Long lines, having pictures taken, \$5.00 parking permit, and more long lines bring to mind the registration each quarter at Valdosta State College.







President's Reception

Feeding a cat, yes even this! The annual President's Reception includes everything from hungry cats to scared "Rats." Here students have an opportunity to get to know faculty representatives and fellow classmates.





The Wanderers Three: John James, Tim Evans, and Earny Mills.

The Wanderers

Three

The SGA's concert for Fall quarter brought to the VSC campus The Wanderers Three. Each quarter the SGA sponsors a concert and a dance for the students. The folk singing group on our campus was a success, and the SGA Concert was a highlight for the quarter.



The informal dance sponsored by the SGA was held in the gym with "The Continentals" playing.





"The Rape of the Belt"

Each quarter the drama department brings "play" to the VSC campus. Fall quarter's production, Benn W. Levy's comedy, "The Rape of the Belt," proved to be another theatrical success for speech director John Rudy and his troupe of Thespians.



Greek Week



Patty Clark presents TKE president Archie Smith with the award for over-all Greek Week winner.



Representatives of the three fraits compete in a foot race.

Participants bite the dust while rolling eggs.



Sisters recuperate after the three-legged race.



"The Thirteen Original Screaming Niggers" played for the Greek Week dance held at the Country Club.

Greek Week has been called the "big week of the year." Many activities occur for the Greeks during this short weekend; the Songfest, the informal dance, the Olympics, and the highlight—the formal dance. Greek God and Goddess were crowned, and winners of Greek Week announced. The activities came to a close with church services at Pound Hall on Sunday morning.



"Goodnight, Irene."

Sweet nothings!



Now Tommy—this ain't the time to crack a funny!



Firelighting

The annual lighting of the fires in the Rotunda is sponsored by the Y.W.C.A. The presidents of all campus organizations participate in this activity which stresses friendship and quality of services.

Hanging of the Greens

The Christmas season begins at VSC with this annual event sponsored by the Y.W.C.A. The Rotunda is decorated with holly wreaths and candles by the seniors in this organization.





Religious Emphasis Week

"Faith in Conflict"—This was the theme for the 1965 REW Program. Dr. Carlyle Marney, our guest speaker, best exemplifies this theme for he is a man around which controversy thrives—science, evil, culture, and death.

Assemblies, seminars, dormitory discussions, faculty luncheons and breakfasts staged the week. Dr. Doug Turley, head chaplain at Milledgeville State Hospital, as well as religious leaders around Valdosta took part in encouraging VSC students to give this year's REW a more realistic approach.





The 1965 Miss Pine Cone Court was presented at the Holly Hop. Andrea Hobbs, Faye Davis, Laura Hobbs, "Miss Pine Cone"; Carol Ann Rainwater, 1964 Miss Pine Cone; Susan Leuck, Suzanne Schultz.



AH-HH! A slow one at last. Even ancient SANTA is flying down to join in this one.



Our chaprons, President Thaxton and Dean Ogletree, sit out the "monkey" under a fence of snow covered ivy. The trophy will be presented later by Dr. Thaxton to Miss Pine Cone of 1965.

Holly Hop

The Holly Hop, the annual Christmas dance, is co-sponsored by the SGA and the Pine Cone staff. Miss Pine Cone for 1965, chosen by James Francisus, was presented as the highlight of the evening.



Students celebrate the end of Fall Quarter with a SWINGING good time.



A member of the Pine Cone Court gets a kiss of congratulations under the Christmas Kissing Ball.



Smile queens; make your escorts proud!



Johnny Cash

Country and folk music star, Johnny Cash, kicked off the SGA's entertainment program for 1965 during the early part of the winter quarter. Appearing with him were Miss June Carter, the Statler Brothers, and the Tennessee Three.

The tall, country singer and guitar player welcomed the biggest concert audience in VSC's history.



*Peace
Corps
Center*



Miss Elsie Normandy, a Peace Corps representative, visited the VSC campus during winter quarter. Miss Normandy spoke to several groups on campus about her training and duties as a Peace Corps volunteer in Peru.

Senior Day

Senior Day is designed to acquaint high school seniors with campus life. Activities, which include conferences, campus tours, open houses, and parties, give the high school students an idea of what to expect when they enter college.





"Gone With the Wind", Circle K Club

Homecoming at VSC

HOMECOMING is planning, building, decorating, last minute flurry, late hours, no sleep, tired, tired, tired—and then the exciting, memorable weekend.



"The Ten Commandments", BSU



BEST DORMITORY DISPLAY
"Tea House of the August Moon"
Converse Hall



MOST APPROPRIATE
"MCM Lion"
Tau Kappa Epsilon



MOST BEAUTIFUL, "Three Coins In a Fountain"
Alpha Delta Pi



MOST ORIGINAL
"Frankenstein"
Sigma Phi Epsilon



Reade Hilton



"Mr. Novak at VSC", Education Club

PRESIDENT'S AWARD
"Disneyland"
Kappa Delta



Homecoming Dance



In the atmosphere of a motion picture company, Homecoming queen, Angie Jarrett, was crowned by former queen, Gail Bazemore. In a flurry of excitement, Her Majesty began her reign.





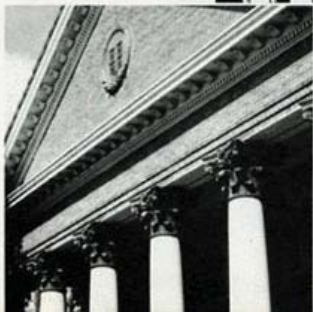
Midway the festivities of the dance, the winning floats and forms were presented their awards to the enjoyment of most and astonishment of some.

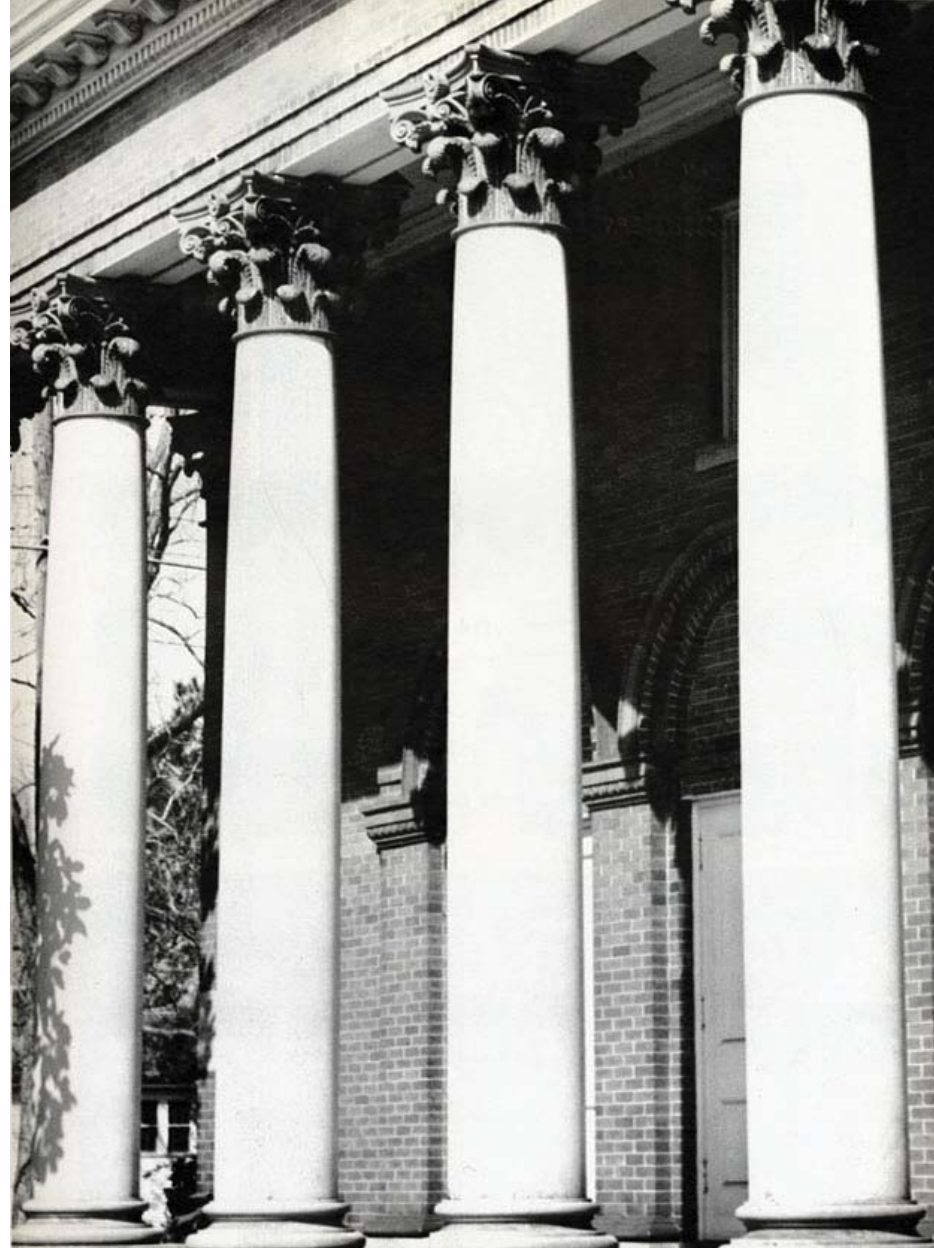
The Chiffons, nationally known singers, added sparkle and contributed greatly to the overall success of Homecoming 1965.



Greeks

The Greeks comprise meetings of secret rituals . . . symbols . . . tradition . . . individuals bound by congenial associations. Many parts are projected—personal recognition . . . joyable experiences . . . study groups . . . fun . . . a bond of friendship—GREEKS.





Alpha Delta Pi



Delta Theta Chapter of Alpha Delta Pi was established on the Valdosta State College campus in 1958.

The open motto of Alpha Delta Pi is "We live for each other." The colors are white and blue and the flower is the violet.

ADPi not only encourages friendship but demands a high standard of scholarship. Delta Theta has won the Panhellenic Scholarship award for the past four quarters for attaining the highest average among the sororities.



ANNE THOMAS JIM ROBINSON PATRICIA PUGNETT ANN POWELL DEL BUCHHEIM MARIE SWINNEY CLARE FREDMAN SHARON MCGRAW CAROL JULY PATRICIA WALSH BRENDA WETTS



BARBARETTE WILLIAMS CAROLE WILLIAMS LYNN SLASSEN

Alpha Delta Pi

19 65



LOUI FERRON CAROL ANN WAINWATER MARGARET SMITH



BRENDA SMITH JESSICA SHARPEY SARAH WHITE ANN SHOOTER

Valdosta State College



K.A. McALLISTER ANNE SMITH LYN WILSON LARA HARRIS



MARGARET PARSONS SHARON THOLEMAN SARAH DE BARNHART LUTELLE SIMPSON ALYCE HANDEL BARBARA TALLEY BRENDA SLEASON MARY FRANK POWELL SHEILA WOOD CAROL ALFORD JENNIFER SMITH



LARA GIBBS MARY SMITH LUTELLE SMITH LYN SIMMONS BRENDA WOODS CAROL HOTTENBERG MARY TURNER ANN TALLEY SHARON WAGNER JILL HUTCHINGS

VALDOSTA STATE COLLEGE, VALDOSTA, GA.

1964 Pledge Class with the ADP's "King of Diamonds"—Jimmy O'Neal.



Mabel presents Carol Jolley with the "Most Outstanding Sister" award.



"All for the ADP's stand up and holler."



ADP's take FIRST place in the Greek Week Song Fest.



Alpha Xi Delta



Gamma Xi Chapter of Alpha Xi Delta was installed on the Valdosta State campus in 1958. Alpha Xi Delta stands for development of character, scholarship, interest in campus affairs, and a wholesome social life.

The colors of Alpha Xi are double blue and gold and her flower is the pink Killarney Rose.



NETTE WILSON

BOBIE LARLEY

BARBARA WATSON

FRANK BENTON

BARBARA WATSON

BARBARA WATSON

BARBARA WATSON

BARBARA WATSON

BARBARA WATSON



Alpha Xi Delta

19  65



Valdosta State College



NETTE WILSON

BOBIE LARLEY

BARBARA WATSON

FRANK BENTON

BARBARA WATSON

BARBARA WATSON

BARBARA WATSON

BARBARA WATSON

BARBARA WATSON

BARBARA WATSON



The annual song fest at Greek Week was fun for all.



Cindy and Jackie entertain during RUSH.



The Alpha Xi's annual Mother-Daughter Tea.




Connie Champion—President of the Pledge Class.



Kappa Delta

Gamma Mu Chapter of Kappa Delta Sorority was installed on the VSC campus in 1958. Kappa Delta's role on campus has been to encourage friendship, scholarship, and social activities.

The white rose and the colors green and white are symbols of the Kappa Delta. "Slave Day" and the White Rose Ball are annual events sponsored by the KD's.

DARLENE LANE	TERRI ALAN	SARAH SUTTON	SARAH FLETCHER	SARA COOK	KAYE SULPHER	LINDA KAY	SARAH BROWN
SARAH MILLER	BARBARA THOMAS	JILL SMITH	BARBARA REARDON	LES DANIEL	BRIDGETTE JERNETT	BETTY PRIDDY	
	Kappa Delta 19  65						
KAY MILLER							ANN JONES
		Valdosta State College					
JUDITH NELSON	JANE GRAYSON					JO HINES	BETTY SPITZER
ROSE COOK	ELEINE COOK	NANCY SMITH	MARGARET MILLER	JANE SPURRILL	CAROL ANN LAMMIE	CATHERINE CHUBBUCK	ALICE ANN ROUSE
LAURA PUGH	NANCY PURDIE	DOROTHY SMITH	SUZANNE EVANS	MARTHA JOHNSON	JANE JACKSON	SUSAN DANIELS	BETTY MILLER
EMILY WHITE	BETTY LEE GRAYSON	SUSAN RICHARDSON	JANE POWELL	JOYCE BROWN	BARBARA DAY	JANET JONES	BETTY FORD



"They said it couldn't be done"—Jimbo Smith, "KD dream guy" for the second year.

First in olympics and second in song fest made Greek Week fun for us.



Susan Richardson, President of the Pledge Class, presents Dorothy Mears with the "Outstanding Sister" award.



Jo Bryan presents Jean Powell the "Most Outstanding Pledge" award.



Bunny Bridges and Brenda Hankinson tie for Highest Pledge Scholarship.





Panhellenic officers: Margaret Ann Parsons, ADP—Sec'y.; Carol Ann Rainwater, ADP; Patty Clark, KD—Pres.; Jo Bryan, KD—Treas.; Patsy Bullock, Alpha Xi; Sandra Riggin, Alpha Xi.

Panhellenic Council

The Panhellenic Council was established to maintain democratic relations between sororities on the campus.

Its objectives are maintaining sorority life on a high plane, promoting scholarship, furthering high social standards, acting as a forum for the discussion of questions of interest in the college and sororities, and compiling rules governing rushing, pledging, and initiation on the campus at Valdosta State.



Patsy presents Bobby Pierce with the TKE Song Fest Award.



Miss Ogletree, Advisor, and Sandra Sessions, KD, discuss the problem of ROOMS.



Pledges enjoy the entertainment at the annual Panhellenic Pledge Party.



The ENTERTAINERS SIX!

Interfraternity Council

The Interfraternity Council was established in order to form a more democratic, efficient, and understanding governing body to represent, lead, to unify all fraternities, and to decide and act in the interest of fraternity life.

BOTTOM to TOP, LEFT: Carl Odem, Pi Kap —Pres.; Dave Barrow, Pi Kap; David Lloyd, Sig Ep; Ronnie Davis, Pi Kap; Bruce Varnado, Sig Ep. **RIGHT:** Delle Hughes, TKE; Dan Burke, Sig Ep; Jimmy Burroughs, TKE; Jimbo Smith, TKE.



Carl presents Mabel Shirling, ADFP President, with the Song Festival award.



Tug of War during Greek Week.






Pi Kappa Phi

Beta Tau Chapter of Pi Kappa Phi was established on the Valdosta State College campus in 1959.

Pi Kappa Phi encourages teamwork and organization and sponsors such campus activities as the "Miss VSC Contest", "Man of the Year", Teacher of the Year, and "Most Valuable Player" awards in basketball and baseball.

SPONSORS *FRONT ROW:* Genie Rogers, Gail Thomas Andrews, Gail Allen. *BACK ROW:* Elaine Freeman, Ricky Cox, Cindy Sessions, Alwyn Hamill. *NOT PICTURED:* Glenda Gunter, Sandra Babcock.

J.R. WILLIAMS	JAMES CARLSILE	ROBERT N. WOLFE	DAVID L. SPIVEY	TED BENTLEY	MIKE S. WILLIAMS	A. CARL COOK	ROBERT DAVIS	CHARLES F. HOGAN	WAYNE MATTHEWS	ROBERT BALLINGER	WALTER WILLIAMS
				<p>Pi Kappa Phi</p> <p>19  65</p> <p>Valdosta State College</p>							
W. LARRY COBB	NELSON E. CONNER	EMMETT E. MARTIN	LARRY E. KING					JAMES E. SMITH	BOB E. LOVETT	ROBERT E. GANDY	JAMES W. POLLOCK
SANFORD J. SMITH	LARRY E. COOK	WILLIAM E. CHAPMAN	JACK SPIVEY	THOMAS E. LORING	LESTER L. BENNETT	LARRY E. FUNDERBURK	JOHN L. HALL				
WELF P. HARRIS	E. CARL SPEIL	RONALD E. THOMAS	E. BARRY WEATHERLY	DAN A. STOVALL	DOG	CHARLES TRAHAN	CHARLES L. HOGAN	WESTON ROBINSON	JOE L. PITTMAN	EUGENE R. WALLACE	
TOMMY T. WILLIAMS	JERRY J. CONNELL	FRANK S. ALBRECHT	MICHAEL J. MARTIN	SAMUEL E. HOWELL	JIM E. TYSON	RONALD E. BALLOUFF	RONALD L. BLAIN	BARRY W. COLEMAN	WILLIAM E. PRICE	W. WALTER LINNELL	ROBERT E. CHAPMAN



Song Fest 1964

U of Fla.
"Rose Queen"



Pledges entertain at the Univ. of Ga.



Miss VSC 1965
South Pacific





SPONSORS: Nancy Tyson, Margaret Ann Smith, Jane Daniel, Norma Williams, Sweetheart; Susan Leuck, Judy Wells, Chabbie Barefoot.
STANDING: Nancy Smith, Janet Thompson, Alice Collins, Susan White.

Sigma Phi Epsilon

The Georgia Gamma Chapter of Sigma Phi Epsilon came to the Valdosta State College campus in 1960.

Social events highlight their calendar with dances and beach parties. The V.S.C. Directory is published yearly by the brothers and pledges of SPE. One of the Sig Eps projects during the year is to support the National Heart Fund.

				<h3>Sigma Phi Epsilon</h3> <p>19 65</p> <p>Valdosta State College</p>								



"Sweetheart Song"—Song Fest 1964



Sig Ep's attend the Alpha Xi Delta dessert.



CENSORED!!!!

Let's all join hands and circle to the left.






Ruth Ann Roddey, TKE Sweetheart

Tau Kappa Epsilon

Zeta Nu Chapter of Tau Kappa Epsilon was established on the VSC campus in 1959. The chapter sponsors two campus-wide events each year—the selection of Mr. and Miss VSC Talent and the Calendar Girl contest. Also, social events such as the Red Carnation Ball and the beach parties have a place on a TKE's calendar.

 CHARLES A. POWELL	 R. MARSHALL, JR.	 MICHAEL S. PAGAN, JR.	 T. MAFFEY BOSTROM	 JAMES E. BELLAMY	 DOUGLAS E. MORAN	 GARRET F. PLUMMER, JR.	 JEFF T. SIKES	 RALPH W. WACKER
 J. ANTHONY DELEON	 DANIEL L. PENDER	 CARL S. MILLER	 JEROME A. BLANTON, III	 ARCHIE C. SMITH	 JAMES H. BURDETTE	 DALE A. HICKEY	 A. J. MCWHEE	
 EDGAR S. ORSINA	 E. NEAL, JR.	<p>Tau Kappa Epsilon</p> <p>19  65</p> <p>Valdosta State College</p>				 JAMES E. SMITH	 JIM LANE	
 T. TRACY JOHNSON	 ROGER R. ROBERTS	 EDWARD S. MILLER	 DALE W. HARRISON	 JAMES E. SMITH	 JIM LANE			
 GERALD W. SALZER	 ROBERT J. GUMBEL	 JAMES L. STEPHENSON	 RUTH ANN RODDEY	 JAMES E. SMITH	 JIM LANE			
 T. J. JOHNSON	 J. GARY ROBERTS	 JAMES E. SMITH	 DOUGLAS E. MORAN	 JAMES H. BURDETTE	 DALE A. HICKEY	 RALPH W. WACKER		
 T. J. JOHNSON	 J. GARY ROBERTS	 JAMES E. SMITH	 DOUGLAS E. MORAN	 JAMES H. BURDETTE	 DALE A. HICKEY	 RALPH W. WACKER		
 T. J. JOHNSON	 J. GARY ROBERTS	 JAMES E. SMITH	 DOUGLAS E. MORAN	 JAMES H. BURDETTE	 DALE A. HICKEY	 RALPH W. WACKER		
 T. J. JOHNSON	 J. GARY ROBERTS	 JAMES E. SMITH	 DOUGLAS E. MORAN	 JAMES H. BURDETTE	 DALE A. HICKEY	 RALPH W. WACKER		



SPONSORS: SEATED—Roberta Bryce, Cheryl Gorman, Carolyn Reagan, Ruth Ann Rodley, Judy Kear, Vicki Sullins, Jenny Karn. STANDING: Cheryl Black, Lynn Crockett, Linda Bridges, Angie Jarrett, Gail Basmore, Linda Bruce, Cecilia Prescott, Mary Ann Hutchens, Ellen Adair, Anita Purvis, Vann Coleman, Marion Craven, Carol Foster, Guern Hart. NOT PICTURED: Lou Ann McLeod, Joy Golding.



President, Archie Smith, is a year older.



Let's have a PARTY.

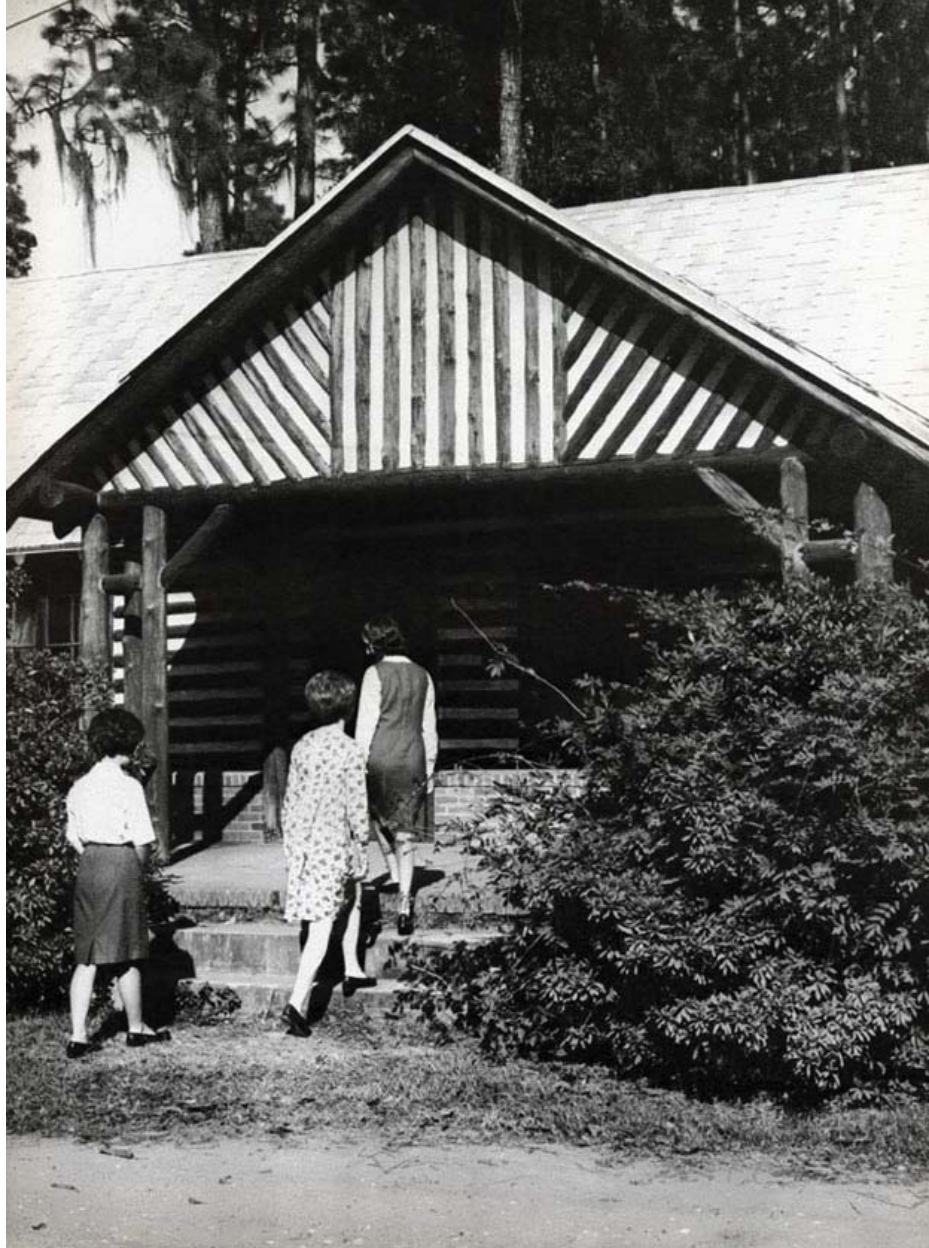
We were FIRST!



Organizations

Organizations—democracy in action, honors, opportunities for common interests and creative talents—are vital for the development of leadership potential as well as offering an outlet for students and the proving ground of new ideas. This phase of student life embraces some of the more pleasant campus experiences.





Student Government Association

The Student Government Association exists on this campus primarily as a social activities coordinator and a voice through which the students speak their opinions. Individuals make their voices heard in student affairs through their representative to the council by petition, or by speaking out when asked for opinions while attending a SGA council meeting.



SGA Officers: *SEATED*: Tex Bentley, Treasurer; Carol Ann Cannon, Secretary; *STANDING*: Jimbo Smith, Vice-President; Laurice Coan, President.



SEATED: Ellen Taylor, girl's town representative; Jo Bryan, dorm representative; Judy Postell, senior representative; Chubbie Barefoot, junior representative; Becky Higginson, freshman representative; Elaine Freeman, sophomore representative; *STANDING*: Bill Chapman, sophomore representative; Tommy Anderson, junior representative, Val Walden, freshman representative, Sammy Webb, town representative; Ronald Thomas, dorm representative.



Laurie Coan from Valdosta, Georgia is SGA president.



The advisor of the SGA is Dr. Louie Sorebet, Dean of Students.

The Wanderers Three were one of the entertainment groups coming to VSC sponsored by the SGA.





Mrs. Adams, Advisor
Lee Hobbs, Editor

Campus Canopy

Throughout the year the Campus Canopy staff observes, interviews, discusses, composes and reflects so students may have a written chronicle of happenings which shape their lives at VSC. Rewards come twice a month in the finished product and at the end of the year in the two quarter hours of credit.



Delores Lashley, Society Editor—Glenda Gunter, Greek Editor.



Sandra Kesler and Sheila McCoy, Reporters; with Irene McMillan, Layout Editor.





Frankie Coan, Business Manager—Molly Huckaby, Assistant Business Mgr.



Gary Starrett, Reporter—Tex Bently, Assistant Sports Editor.



Lee with Chris Connell and Kay Powell, Associate Editors

Judy Postell and Marsha Barnes, typists; chat with Douglas Hodges and Murray Harrell, photographers.



The Pine Cone

The Pine Cone, the college yearbook, is published annually as a record of the school year at Valdosta State College. The staff is made up of volunteers, and academic credit is given to staff members.



Eddie Vickers, Associate Editor; Mrs. Bette Adams, Advisor; Margaret Ann Parsons, Associate Editor; Carol Jolley, Editor.

SPORTS and ORGANIZATIONS
staff: Herbert Burrell, Larry Manning, Janet Thompson, and Abery Hamill.



ADMINISTRATION and CLASSES staff: Kenneth Hollingsworth, Earl Griffin, Juanita Norsworthy, Kay Sands, and Kathy Hansen.



BUSINESS MANAGER
and staff: Lanier Norman,
Patricia Rieblin, Ginny
Lane, and Ann Thomas.



INTRODUCTION staff: Glenda Gunter, Diane
Sael. **PHOTOGRAPHERS:** Douglas Hodges,
Oliver Lindell.



FEATURES and ACTIVITIES staff:
Martha Johnson, David Smith, Dorothy
Mears, Kay Geslin, and Shirley Priest.



SEATED, Shylva Griffin, Vice-President; Carolyn Wood, President. *STANDING*: Jo Bryan, SGA Rep.; Mist Oglestre, Advisor; Yvonne Brown, Secretary.

Women's Residence House Council

The WRHC was organized for the purpose of regulating the dormitory students life for the good of the majority, developing a sense of responsibility in students, and promoting practical government regulations for the dormitory students. All women students become members after passing an examination concerning dormitory regulations. These students elect their officers to represent them on the main council.



ASHLEY HALL: SEATED, Eileen Carter, Dorm President; Mrs. Quillian, House Director; Janet Thompson, *STANDING*, Sandra Buchannan, Mary Ann Nevels, Patsy Bullock, Patricia Butler.

CONVERSE HALL: SEATED, Mrs. Stewart, House Director; Merrie Thigpen, Dorm Pres.; *STANDING*, June Allen, Jean Garbard, Diane Jones.

RADE HALL: SEATED, Elaine Noble, Elaine Freeman, Pres. of Dorm; *STANDING*, Ida Conaway, Joy Lane, Mrs. Hutchinson, House Director, Gail Pinkston.





ROW ONE: Judy Anderson, Chaplain; Louise Hill, Reporter; Jane Daniel, Vice-President; Linda Kay Davis, President, Dot McLendon, Associate Vice-President; Emelynn Carlisle, Secretary; Mrs. Hutchinson, Advisor. ROW TWO: Pat Butler, Liz Carles, Wilda Maxwell, Brenda Kiecaid, Anne Stinson, Diane Fields, Mary Frank Powell, Ginny Lane, Addie Collins. ROW THREE: Pat Miller, Janet Thompson, Patricia Rbelin, Karrn Siljeholm, Linda Simpson, Jackie Clark, Jo Ann Cason, Diane Trawick, Susan Timmons.

Young Women's Christian Association

The Y.W.C.A. seeks to help students to a full and creative life through a growing knowledge of God. This organization cooperates with other religious groups in presenting religious services for the student body. Traditionally it sponsors the Hanging-of-the-Greens and the Firlighting Service.

The Firlighting Service.



Student Religious Council



Left to right: Addie Collins, Young Women's Christian Association; Kay Davis, YWCA; Carol Foster, President and BSU Representative; Anita Purvis, Wesley Foundation; Jim Bule, Baptist Student Union and Mr. Dart, advisor.

Composed of representatives from the religious groups on campus and the adult advisors, the Council coordinates campus religious activities. It also sponsors Religious Emphasis Week as well as the Thursday night Vesper services.

Newman Club

The Newman Club was organized to meet the needs of the Catholic students on campus. Throughout the year this group sponsors many activities for its members as well as providing for their spiritual growth.

Ursula Sinz, Jackie Jenkins, Phil Seyfried, President; Richard Myler, Pat Brannen, Suzie James.





CHOIR

Baptist Student Union

OUT FOR SERVICE



FELLOWSHIP



MISSIONS



The Baptist Student Union is the connecting link between you, the student, and the local Baptist Church. It is a movement fostered by the Baptist denomination to coordinate the religious activities of students on the VSC campus. The BSU center serves as a base of operations for the activities. Members become eligible by taking part in any of its activities.

NOONDAY



Westminister Fellowship

A campus religious organization sponsored by the Presbyterian Church, the Westminister Fellowship strives to encourage Presbyterian students to take an active part in church while they are away at school. They hold weekly meetings with planned programs and suppers.

SEATED: Rev. W. G. Hollyfield, advisor; Ann Thomas, John Baugh, President; Sandra Babcock, Ruth Carmen, Deleores Lashley, Judy Lester, Susan Leuck. *STANDING:* Chubbie Barefoot, Jim Butler, Hugh Mitchell, Neil Bullock, Phil Wertz, Bill Rivensbark, Alice Collins, Ann Simson, Marilyn King.





Coffee and donuts during exams.



Discussion and seminar groups



Wesley Foundation Choir

Wesley Foundation

The Wesley Foundation, sponsored by the Methodist Church, is on the campus to serve the needs of students and faculty in the college community. A broad program includes such varied activities as study seminars, drama, choir, social events, weekend trips, and the worship service.

Collegiate Christian Association



FIRST ROW: Nancy Dasher, Murelene Walker, Drennell Thomas, Linda Butler. *SECOND ROW:* Norvell Spearman, Frances Jones, Carole Williamson, Ashley Donahue. *THIRD ROW:* Johnny Ray,

Sammy Webb, Darrell Smithwick, President, Lindy Evans, Richard Jonas. *FOURTH ROW:* George Podzin, Ray Peters, Jerome Blanton, Larry Jonas.

The Collegiate Christian Association, organized this year, serves the members of the Church of Christ on the college campus. The group meets bi-weekly for devotionals and a time of fellowship. The sponsor for this group on campus is Gary Colson.

Serenaders, Glee Club

The Serenaders is a select group of students who have been chosen because of exceptional musical ability. They are popular performers at civic clubs, high schools and at various other local events. Their music has popular appeal and flavor, that makes them campus favorites.

FRONT ROW: Mrs. Lavan Robinson, advisor; Mary Duncan; Gail Fox; Bunny Bridges; Shirley Brown; Marda Huggins; Mary Ellen O'Quinn; Linda Bruce.
BACK ROW: Joe Allen; Jack Murray; Jerry Pilcher; Larry Adams; Niel Bell; Hal Ratchiff; John Baugh; Mr. Lavan Robinson, advisor.



ROW ONE: Shirley Brown, Gail Fox, Jeanette Mathis, Mary Duncan, Millie McLane, Carol Bledsoe, Elaine Freeman.
ROW TWO: Linda Bruce, Pat Butler, Marian Craven, Bunny Bridges, Mary O'Quinn, Dale Geer, Marda Huggins, Mary Ellen O'Quinn, Krysis Kirbo, Wilma Maxwell, Patsy Anderson, Niel Bell, Mr. Robinson.
ROW THREE: Jerry Pilcher, Jack Murray, Larry Adams, Gerald Chapman, Gerald Boyd, Rick Tyson.
ROW FOUR: Charles O'Quinn, Jimmy Boyle, Bill Gable, John Baugh, Terry Carter, Joseph Barch.





SEATED, Gary Simmons, Charles Wilkes, Jo Bryan, Sweetheart; Jimbo Smith, President; Tommy Anderson, Mr. Robinson, Advisor. *STANDING*, Darrell Smithwick, Edlie Vickers, George Barney, Kenneth Glass, Kinsey Helms, Gary Starrett, Gene Grenaker, Lanier Norman.

Circle "K"

A widely known international service club, the Circle K works for a better community. It undertakes many projects that are most beneficial to campus and community life. The major projects of the year were a "Hootenanny" to raise funds for athletic scholarships, putting out trash cans to help keep VSC campus clean, and ushering at VSC functions such as Honor's Day.





OFFICERS: Sandra Soskins, Vice-Pres.; Faye Milner, Pres.; Dolores Lashley, Sec'y; Mrs. McKey, Advisor.

Sigma Alpha Chi

Sigma Alpha Chi is an honor society that encourages scholarship and stimulates interest in academic activities. It maintains a scholarship loan fund for students wanting to do graduate work. The club sponsors the Marga and Mac contest each year to honor the most outstanding senior and junior boy and girl.



SEATED: Gail Fountain, Patricia Ritch, Ellen Adair, Claire Owens, Suzan Leuck, Susan Leonard. STANDING: Bill Sapp, Bob Lane,

Margaret Ann Smith, Irene McMillian, Annetta Copeland, Serena Owens, Donald Nickerson, Dick Maath.



FIRST ROW: Susan Leonard, Kneerne Butterfield, Sandra Hawkes, Angeline Davidson, Diane Fields, Irene McMillan, Elizabeth Fant Grenaker, Florence McMahon, Sandra Sessions, Sylvia Atkinson, Faye

Milner, Delores Lashley. *SECOND ROW:* Dianne Cowart, Donald Nickerson, Terrell Lott, Bill Sapp, Bob Lane, Jim Bale, Tom Milner, George Folsom, Sonny Atkins.

Alpha Chi

Alpha Chi is a national Honor Society. Those eligible for membership are members of the Junior and Senior classes who rank in the upper 10% scholastically. The Georgia Alpha chapter at VSC initiates all eligible juniors and seniors during the fall quarter of each year.



FIRST ROW: Miss Ann Kirby, Advisor; Annetta Copeland, Suzanne Hagan, Pat Butler, Mary Helen Hadden, Pat Ritch, Linda Hewett, Lynn DiMascio, Anne Timmons, Judy Pearson, Dr. Duvall, Advisor.

SECOND ROW: Cheryl Metts, Dot McLendon, Dick Marsh, Dennis Cox, David Atkinson, William Hickey, William Bailey.

Sociology Club

Work in the Lowndes County-Troopville Prison, field trips to nearby welfare homes and other institutions are only a part of the learning experiences of the Sociology Club. Problems, principles and fields of opportunity are discussed at bi-monthly meetings.



SEATED, Janet Thompson, Vice-President; Carol Jolley, Secretary-Treasurer; *STANDING* Dr. Durrenberger, advisor; Ronnie Davis, President; Neil Bell, Program Chairman.



STANDING, Walter Altman, Herman Hudson, Paul McNeal, Charles DeVane, Bill Summerford, Mr. Riedel, Advisor; Wayne Sanders. *SEATED*, Susan Leonard, Sharon Bishop, Gail Fountain, Ann Rushion, Carol Ann Rainwater, Carolyn Wood, Always Hamill, Sandra Sessions.

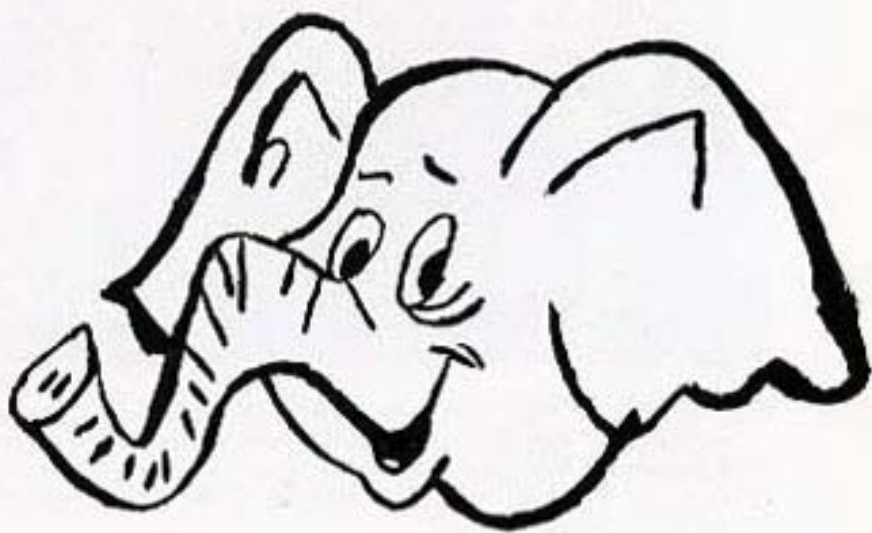




FRONT ROW: Bill Chancellor, Buford Whatley, Gary Starrett, Dick Mangham *BACK ROW:* Dr. Peebles, Dr. Lausens, Dr. Gabard, Irene McMillan, Jackie Jenkins, Billy Carter, Mr. Manning.

Shades of Gray

Via debates, research and discussion, the goals of Shades of Gray are accomplished. Members pursue intellectual stimulation in monthly meetings.



Education Club



FIRST ROW: Linda Hickey, Karen Siljeholm, Nancy Tyson, Sandra Buchanan, Chubbie Barefoot, Jane Standland, President; Ruth Ann Rodley, Sandra Hawkes. **SECOND ROW:** Naomi Gilliard, Kitty Thrash, Carole Williamson, Laura Hobbs, Linda Tuten, Diane McDaniel, K. K. McAllister, Harriete Hilliard, Emelynn Carlisle, Jackie Jackson, Pat McKey. **THIRD ROW:** Mrs. Knight, Advisor; Diane Willis, Judy Waile, Jackie Clark, Brenda Smith, Nancy Youngblood, Pat Willis, Jane Crabtree, Ellen Adair, Henaletta Smith, Dietra Spooner, Kate Culpepper. **FOURTH ROW:** Patsy Sellers, Mabel Shirling, Barbara Talley, Patsy Wilson, Brenda Kincaid, Alice Collins, Pat Puckett, Kay Talley, Lyn Edwards, Jane Allen, Ruth Curmen, Anne Stinson, Mary Ann Nevils.

Membership in the Education Club is open to all elementary and secondary education majors, and also to all students interested in working for the education and well-being of children. Monthly meet-

ings are centered around desirable educational programs and the raising of standards of the professional training for teaching and leaders in the field.



FIRST ROW: Judy Wells, Ginny Wells, Shirley Priest, Nancy Purtle, Jo Ann Canon, Mary Stafford Williams, Maerita Owen, Louise Hill, Serena Owens, Mary Ann Baker, Herbert Burrell. **SECOND ROW:** Miss Schild, Advisor; Earl Griffin, Kay Sands, Vance Reynolds, Patsy Bollock, Linda Kay Davis, Lynn Crockett, Diane Thielemann, Ann Timmons, Linda Simpson, Mary Helen Hadden, Kenneth Hollingsworth. **THIRD ROW:** Kay Gisley, Linda Hewett, Linda Wilkerson, Dot McLendon, Patsy Anderson, Judy Postell, Ann Cook, Dorothy Mears, Marian Craven, Yvonne Powell, Norma Williams.



FIRST ROW: Miss McKersly, Advisor; Faye Forll, Secretary; Larry Lang, Vice-President; Bill Gilla, Treasurer; Mildred Williams, President; Richard Myler, Reporter. *SECOND ROW:* Cheryl Cormany, Gayle McWilliams, Johnny Register, Brenda Roberts, Bill Morrison.

THIRD ROW: Patricia Ritch, Louise Hill, Andy Shenton, Laura Jones, Ralph Dorsett. *FOURTH ROW:* Billy Wade, Pat Weeks, Jane Daniel, Richard Creel, Robert Reiberg. *FIFTH ROW:* Robert Creel, Bill Sapp, Joe Wiggleworth, Preston Hodges.

Phi
Beta
Lambda

Phi Beta Lambda is a business club composed of majors and minors in the fields of Business Administration and Secretarial Science. Its purpose is the promotion of business education and training, and business experiences through club activities.



FRONT ROW: Vicki Sullivan, Sandra Whenters, Cheryl Metts, Cindy Sessions, Genie Rogers, Julia Raven *BACK ROW:* Jon McCranie, Terry Carter, Jerry Dickson, Elaine Snipes, Mr. Rudy, Advisor; Mike Jarvis, Larry Hayslip.

Sock and Buskin



Members produce all campus dramatic productions. Students interested in all phases of dramatics, directing and stage management may join.



Mr. Leroy Babcock, Advisor.

Math-Science Club

The main purpose of this club is to create new interest in the sciences and mathematics. It also strives to stimulate its members in their chosen fields. Membership is composed of those majoring or minoring in the sciences or mathematics.

SEATED: Charles Wilkes, President; Diane Fields, Vice-President; Junita Norrworthy, Secretary; Denais Cox, Treasurer; Jackie Jenkins, Publicity Chairman. *STANDING:* Vance Reynolds, Kenneth Hollingsworth, Michael Whittle, Dicky Reynolds, Ronald Mullis, Jim Stevenson, Kinsey Helms, Gary Simons.



Alpha Psi Omega



FIRST ROW: Cindy Sessions, Cheryl Metts, Gale Thomas, Genie Rogero. *SECOND ROW:* Mr. John Rudy, Advisor; Hoyt Crosby, Jerry Dixon, Joe Williams, Grady Mills.

Alpha Psi Omega was organized as an honorary dramatic fraternity for the purpose of providing an honor society for those doing a high standard of work in dramatics, and through expansion to provide a wider fellowship for those interested in college theater. It is not intended to take the place of the regular dramatic club. Qualified students in the dramatic club are rewarded by election to membership into this society. Rho Epsilon Cast was established in 1959.

Creative Writing Club

Under the guidance of their advisor, students discuss and analyze their own poetry, essays, and short stories as they attempt to firm and shape individual skills. Members are usually English majors or minors.



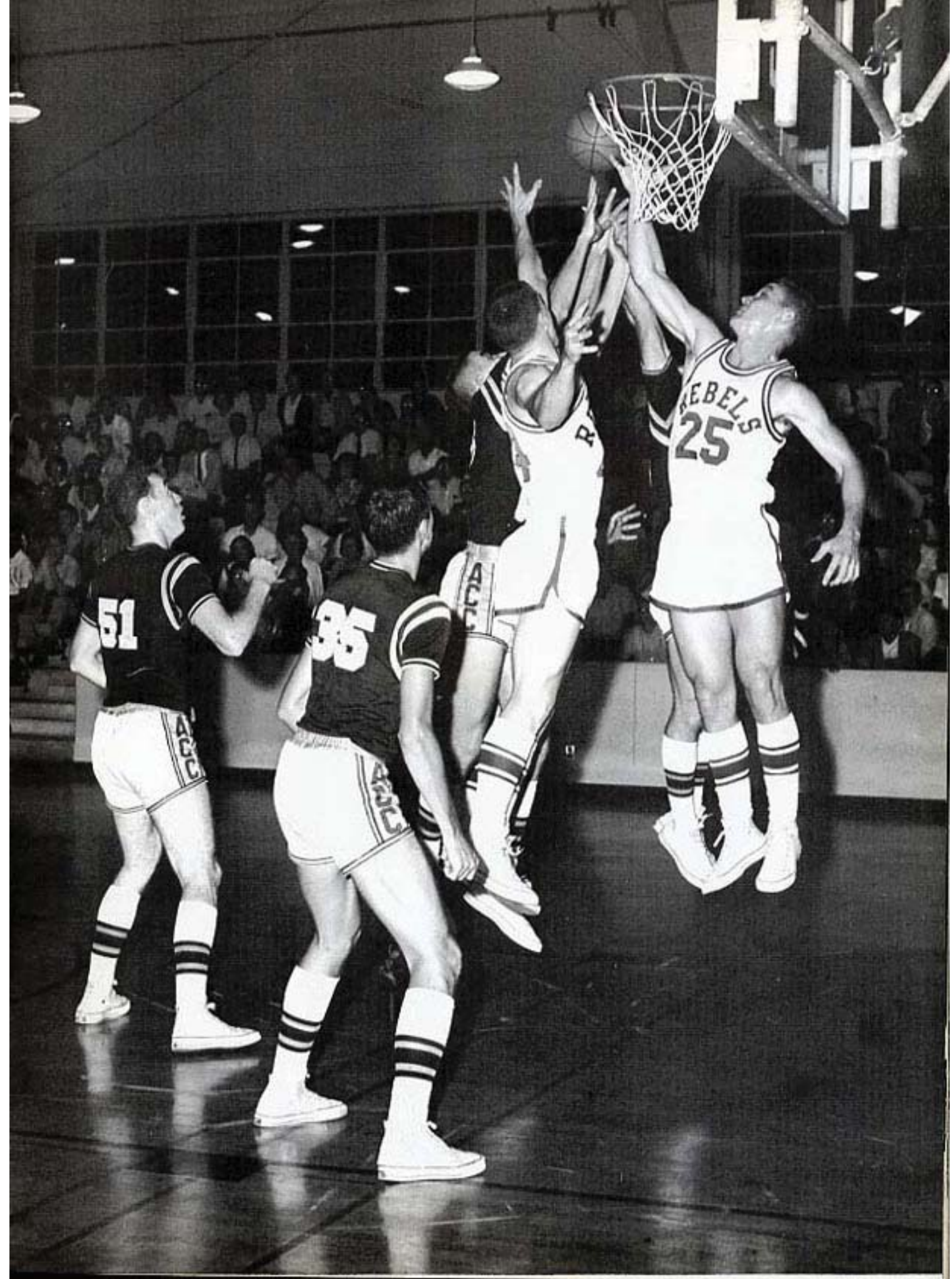
FIRST ROW: Sandra Hester, Sheila Edwards, Suzanne Evans, Shirley Priest, Gail Hutchinson, Sandy Wheaton, Beth Adams, Elaine Parrish,
SECOND ROW: Mr. Wilkerson, Advisor; Scott Cohen, Kay Gillis,

Lee Hobbs, Sheila McCoy, Julia Hutchinson, Linda Bruce, James Lineburger.

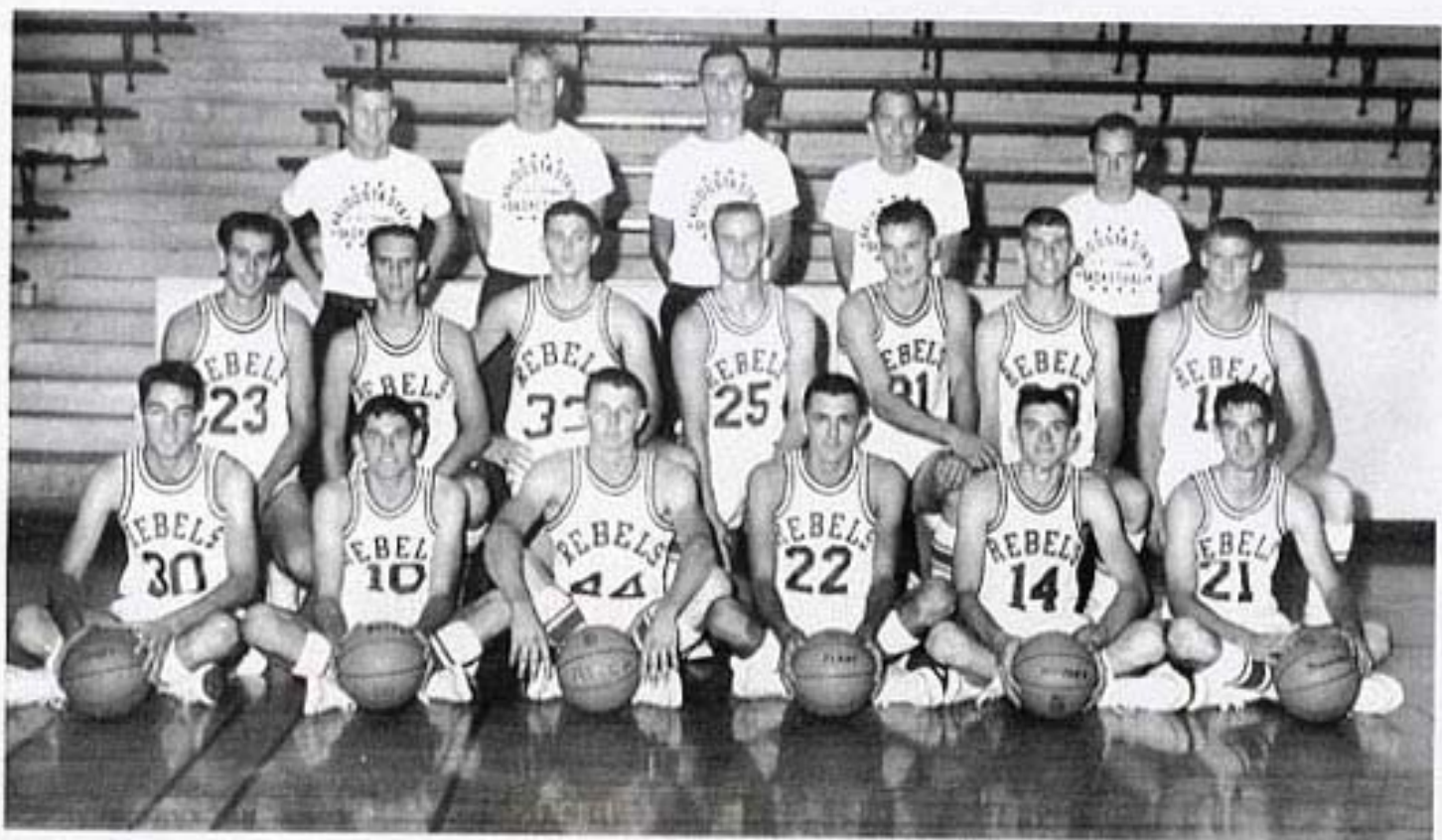
Athletics

Sports—what is there to say? For who has not heard of the V.S.C. Rebels GIAC Champs for four consecutive years. To be sure there are other sports besides basketball, and they all have their value in a place of higher learning as builders of men's bodies. A few would question their position—but none can deny their dramatic appeal.





The Valdosta State College Rebels



FIRST ROW: Mike Terry, Ben Bates, Bobby Ritch, Letson Plant, Preston Hodges, Tommy Johnson. *SECOND ROW:* Gary Traylor, Ron Fortner, Paul Whiteman, Paul Vick, Tommy McFarland, Bob

Lamphier, Dennis Fike. *THIRD ROW:* Ray McCully, Tommy Anderson, Coach Gary Colson, Jim Hunt, Bill Gillis.



Six players: Ben Bates, Tommy McFarland, Tommy Johnson, Preston Hodges, Dennis Fike, and Bobby Ritch return from last year's GIAC championship team. Coach Colson works with core of veterans toward VSC's fifth consecutive title.

Alabama Christian was defeated by the Rebels to the tune of 87-73.



A region game with Piedmont was won 66-60.



Valdosta State mauled West Georgia 86-14.



History was made as the Rebels push past Oglethorpe College 65-53.



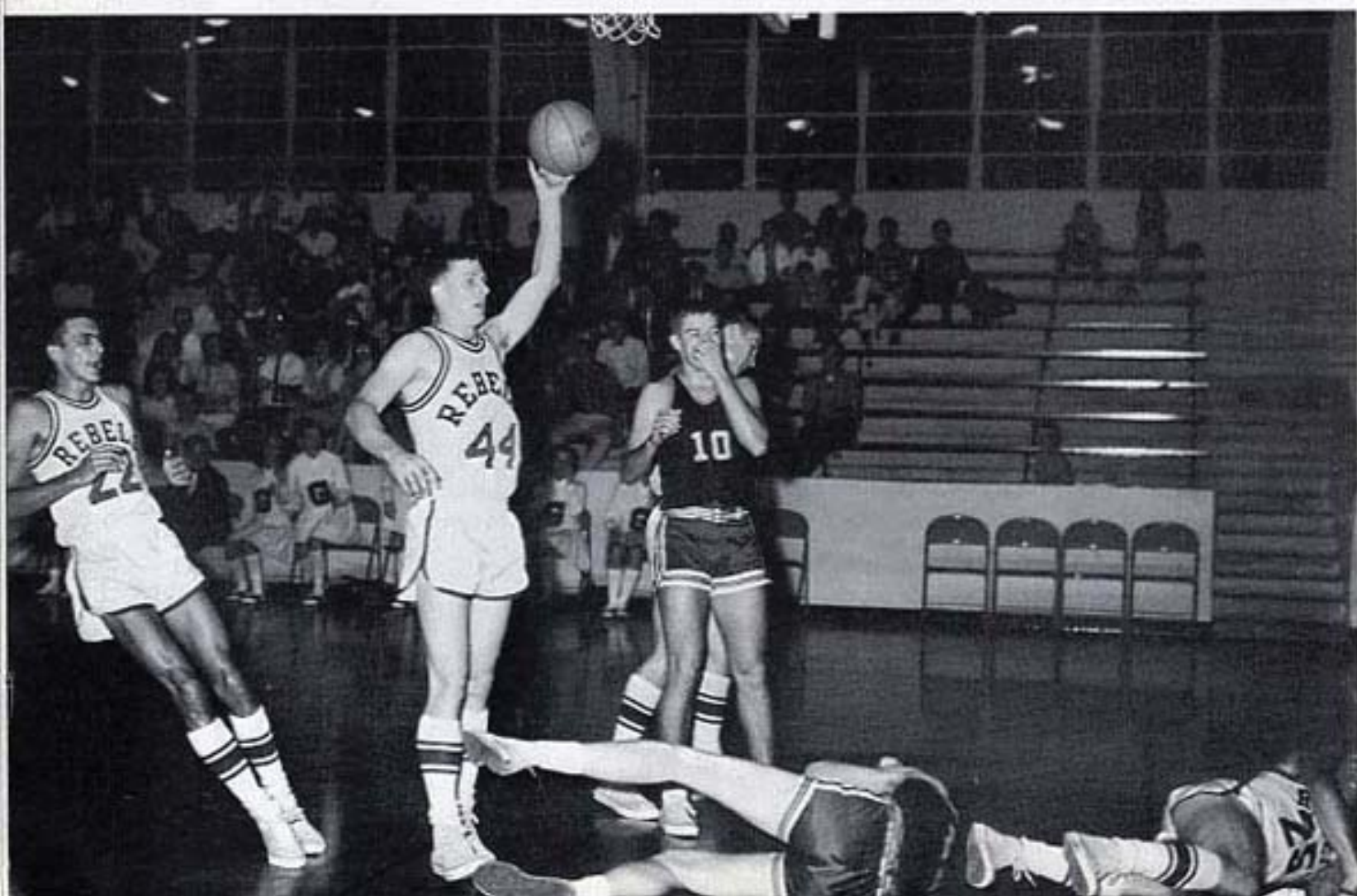


Rebels finish off Alabama College 90—51.



Berry bows to the more powerful Rebels 84—55.

Atlanta's Georgia State falls to Valdosta State 81—61.





Hawks are Rebel bait to the score of 74-63.



Now, remember, the referees haven't taken the lie-detector test yet.

Wilmington is stopped in the last two seconds 62-60.



Covenant drops a game to V.S.C. 104-45.

